

Evelyn Ilene Magruder Trust



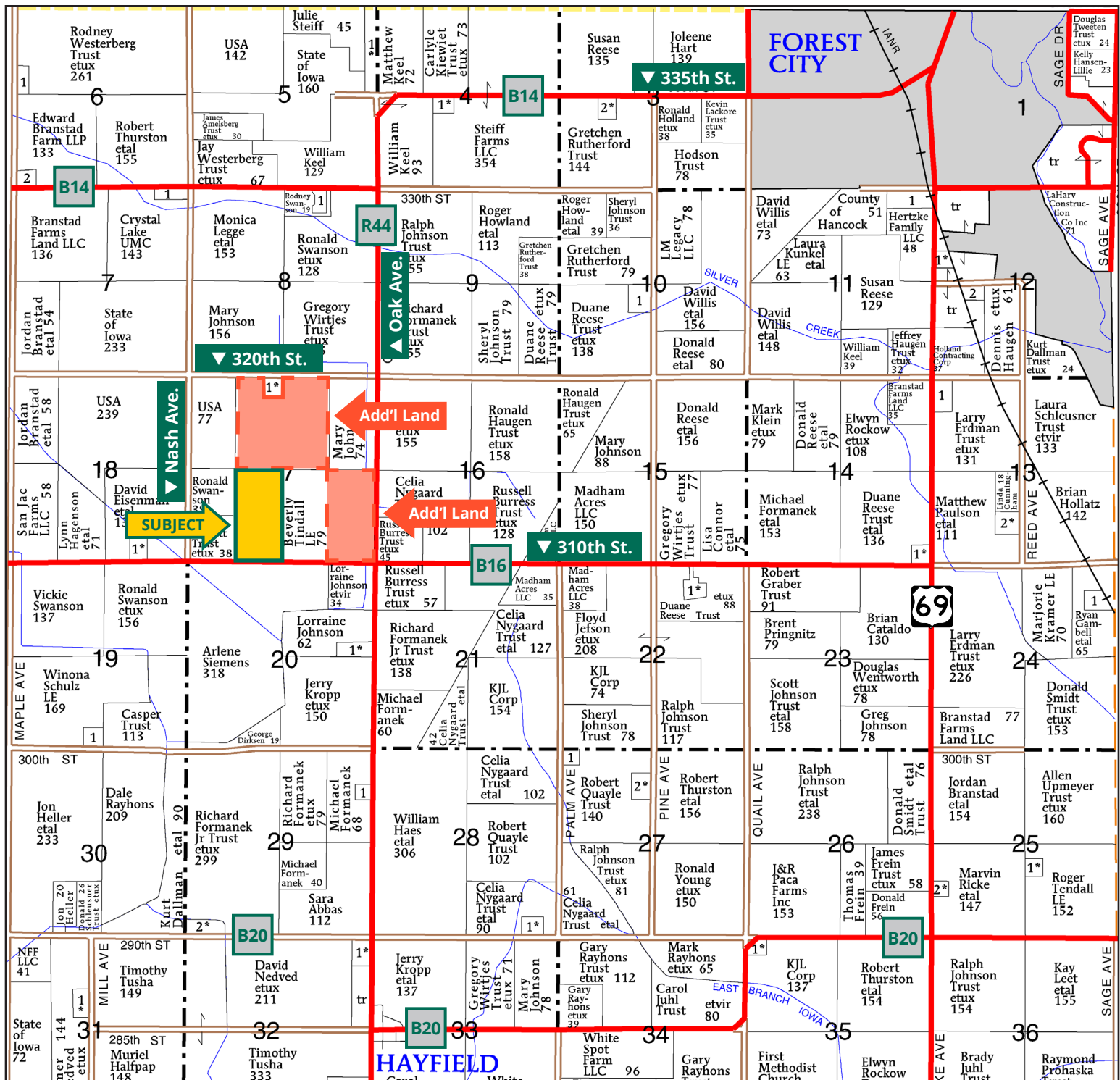
JAMESON ANDERS
Licensed Salesperson in IA & MN
319.269.7975
JamesonA@Hertz.ag



CHRIS SMITH, ALC, AFM
Licensed Salesperson in IA
515.229.7262
ChrisS@Hertz.ag

641.423.9531 | 2800 4th St. SW, Ste. 7
Mason City, IA 50401 | www.Hertz.ag

80.00 Acres, m/l
Hancock County, IA



Map reproduced with permission of Farm & Home Publishers, Ltd.

641.423.9531 | 2800 4th St. SW, Ste. 7 | Mason City, IA 50401 | www.Hertz.ag

JAMESON ANDERS
319.269.7975
JamesonA@Hertz.ag

CHRIS SMITH, ALC, AFM
515.229.7262
ChrisS@Hertz.ag

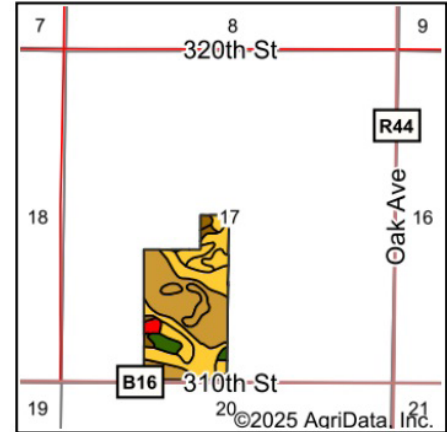
FSA/Eff. Crop Acres: 68.91 | CRP Acres: 10.52 | Soil Productivity: 46.30 CSR2



641.423.9531 | 2800 4th St. SW, Ste. 7 | Mason City, IA 50401 | www.Hertz.ag

JAMESON ANDERS
319.269.7975
JamesonA@Hertz.ag

CHRIS SMITH, ALC, AFM
515.229.7262
ChrisS@Hertz.ag



State: Iowa
County: Hancock
Location: 17-97N-24W
Township: Madison
Acres: 68.91
Date: 6/3/2025



Maps Provided By:
 surety
CUSTOMIZED ONLINE MAPPING
© AgriData, Inc. 2023 www.AgriDataInc.com



Soils data provided by USDA and NRCS.

| Area Symbol: IA081, Soil Area Version: 35 | | | | | | |
|---|--|-------|------------------|-------------|------------------|--------|
| Code | Soil Description | Acres | Percent of field | CSR2 Legend | Non-Irr Class *c | CSR2** |
| 335 | Harcot clay loam, 0 to 2 percent slopes | 27.50 | 39.9% | | IIw | 39 |
| 658 | Mayer loam, 0 to 2 percent slopes | 16.97 | 24.6% | | IIw | 54 |
| 823B | Ridgeport sandy loam, 2 to 5 percent slopes | 7.97 | 11.6% | | IIIe | 51 |
| 1259 | Biscay clay loam, depressional, 0 to 1 percent slopes | 3.53 | 5.1% | | IIIw | 36 |
| 524 | Linder sandy loam, 32 to 40 inches to sand and gravel, 0 to 2 percent slopes | 3.00 | 4.4% | | IIIs | 57 |
| 1032 | Spicer silty clay loam, 0 to 2 percent slopes | 2.35 | 3.4% | | IIw | 91 |
| 308 | Wadena loam, 0 to 2 percent slopes | 2.06 | 3.0% | | IIIs | 56 |
| 28B | Dickman sandy loam, 2 to 6 percent slopes | 1.65 | 2.4% | | IIIe | 20 |
| 28D2 | Dickman sandy loam, 5 to 14 percent slopes, moderately eroded | 1.31 | 1.9% | | IVe | 6 |
| 28 | Dickman sandy loam, 0 to 2 percent slopes | 1.13 | 1.6% | | IIIs | 24 |
| 259 | Biscay clay loam, 0 to 2 percent slopes | 0.89 | 1.3% | | IIw | 52 |
| 1339 | Truman silt loam, 0 to 2 percent slopes | 0.55 | 0.8% | | Iw | 99 |
| Weighted Average | | | | | 2.24 | 46.3 |

Location

From Forest City: Go west on B14 / 335th St. for 2.9 miles, continue on Oak Ave. / R44 for 2.4 miles, and then west on 310th St. for 0.6 miles. Property is located on the north side of the road.

Simple Legal

E½ SW¼ of Section 17, Township 97 North, Range 24 West of the 5th P.M., Hancock Co., IA. *Final abstract/title documents to govern legal description.*

Price & Terms

- \$756,800
- \$9,460/acre
- 10% down upon acceptance of offer, balance due in cash at closing.

Possession

As negotiated, subject to terms of existing lease.

Real Estate Tax

Taxes Payable 2024 - 2025: \$1,270.00
Gross Acres: 80.00
Net Taxable Acres: 78.64
Tax per Net Taxable Acre: \$16.15

Lease Status

Leased through the 2025 crop year.

FSA Data

Farm Number 5533, Tract 236
FSA/Eff. Crop Acres: 68.91
CRP Acres: 10.52
Corn Base Acres: 68.91
Corn PLC Yield: 144 Bu.

CRP Contracts

There are 10.52 acres enrolled in two CRP contracts.

- There are 5.52 acres enrolled in a CP-28 contract that pays \$1,010.00 annually and expires 9/30/2030.
- There are 5.00 acres enrolled in a CP-27 contract that pays \$915.00 annually and expires 9/30/2030.

Soil Types/Productivity

Primary soils are Harcot, Mayer and Ridgeport. CSR2 on the FSA/Eff. crop acres is 46.30. See soil map for detail.

Land Description

Level to gently sloping.

Drainage

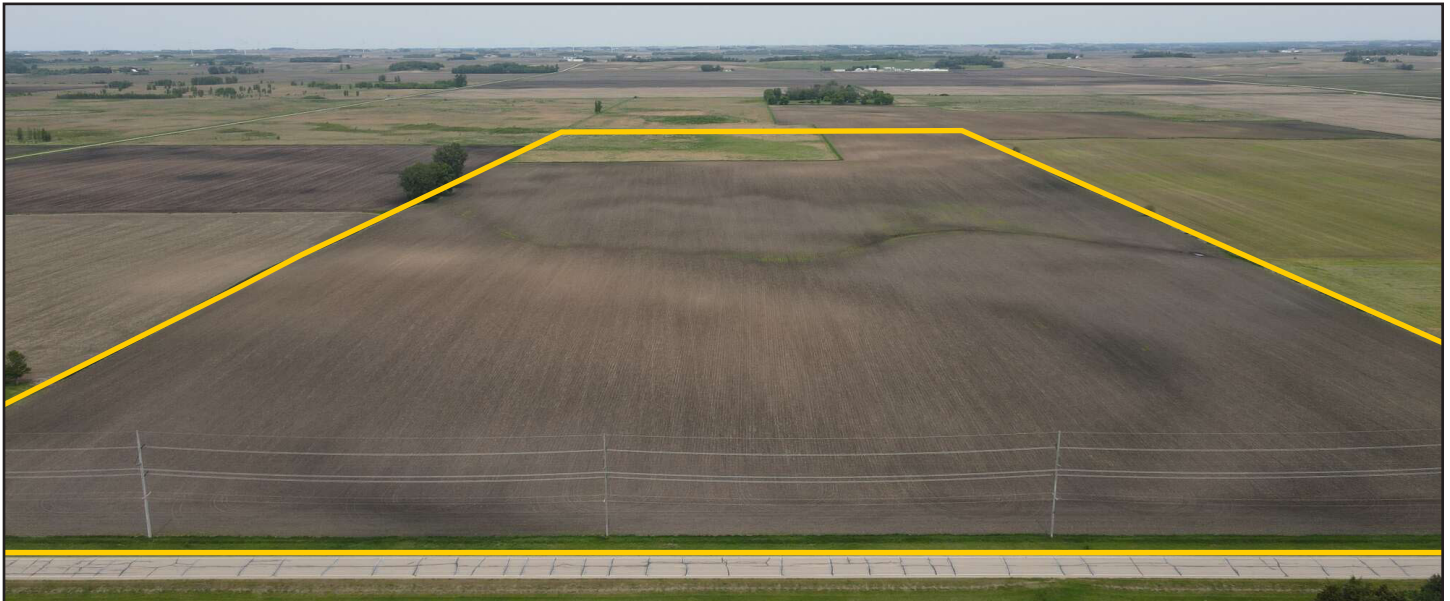
Some tile. Contact agent for tile maps. Property is part of Drainage District #65.

Comments

Nice mixed-use farm with cropland, CRP and recreational opportunities.

Additional Land for Sale

Seller has two additional tracts of land for sale located north and east of this property. See Additional Land Aerial Photo.



The information gathered for this brochure is from sources deemed reliable, but cannot be guaranteed by Hertz Real Estate Services or its staff. All acres are considered more or less, unless otherwise stated. All property boundaries are approximate. Soil productivity ratings are based on the information currently available in the USDA/NRCS soil survey database. Those numbers are subject to change on an annual basis.

Southwest looking Northeast

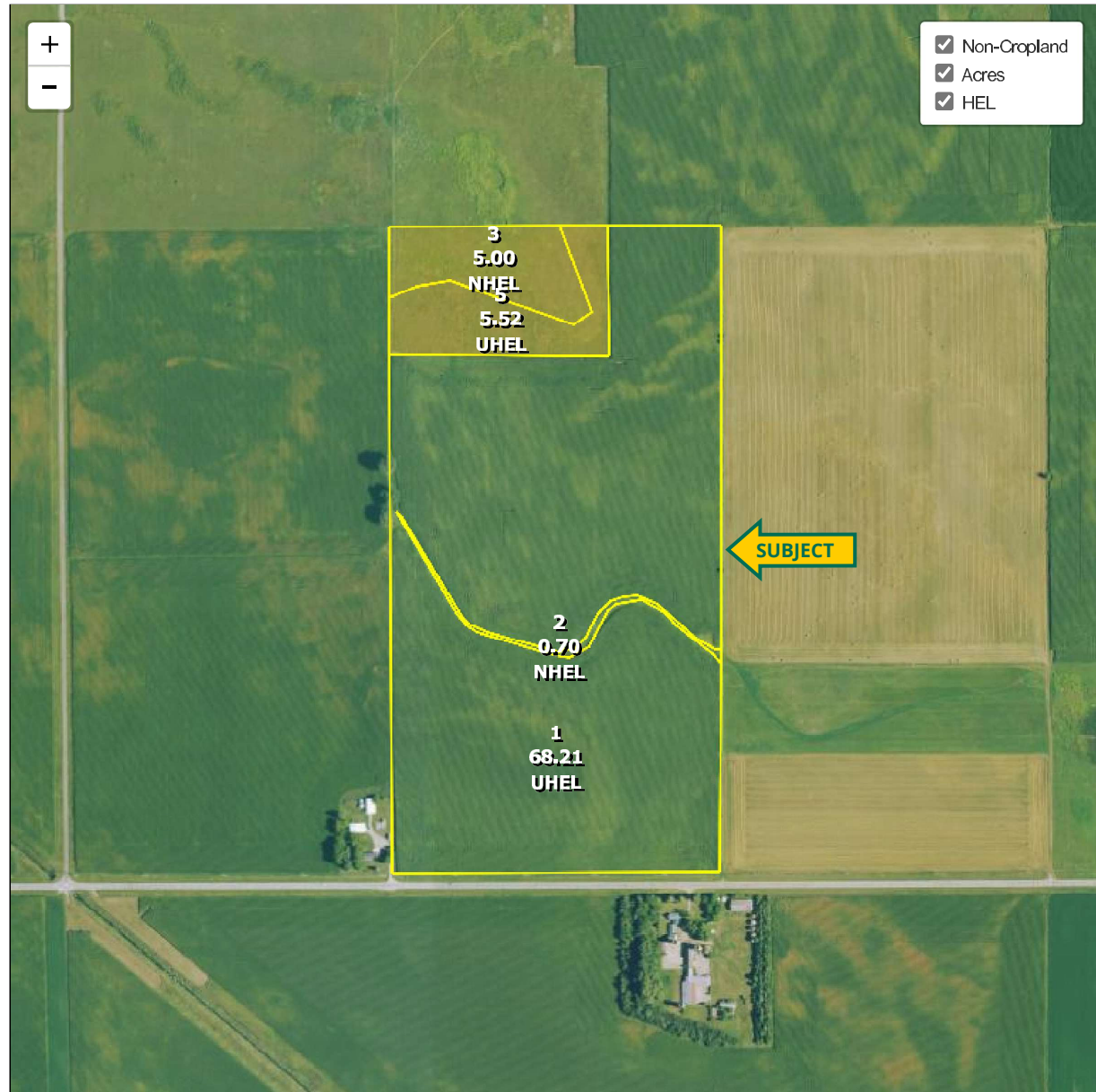


Northwest looking Southeast





Hancock County, Iowa



Common Land Unit

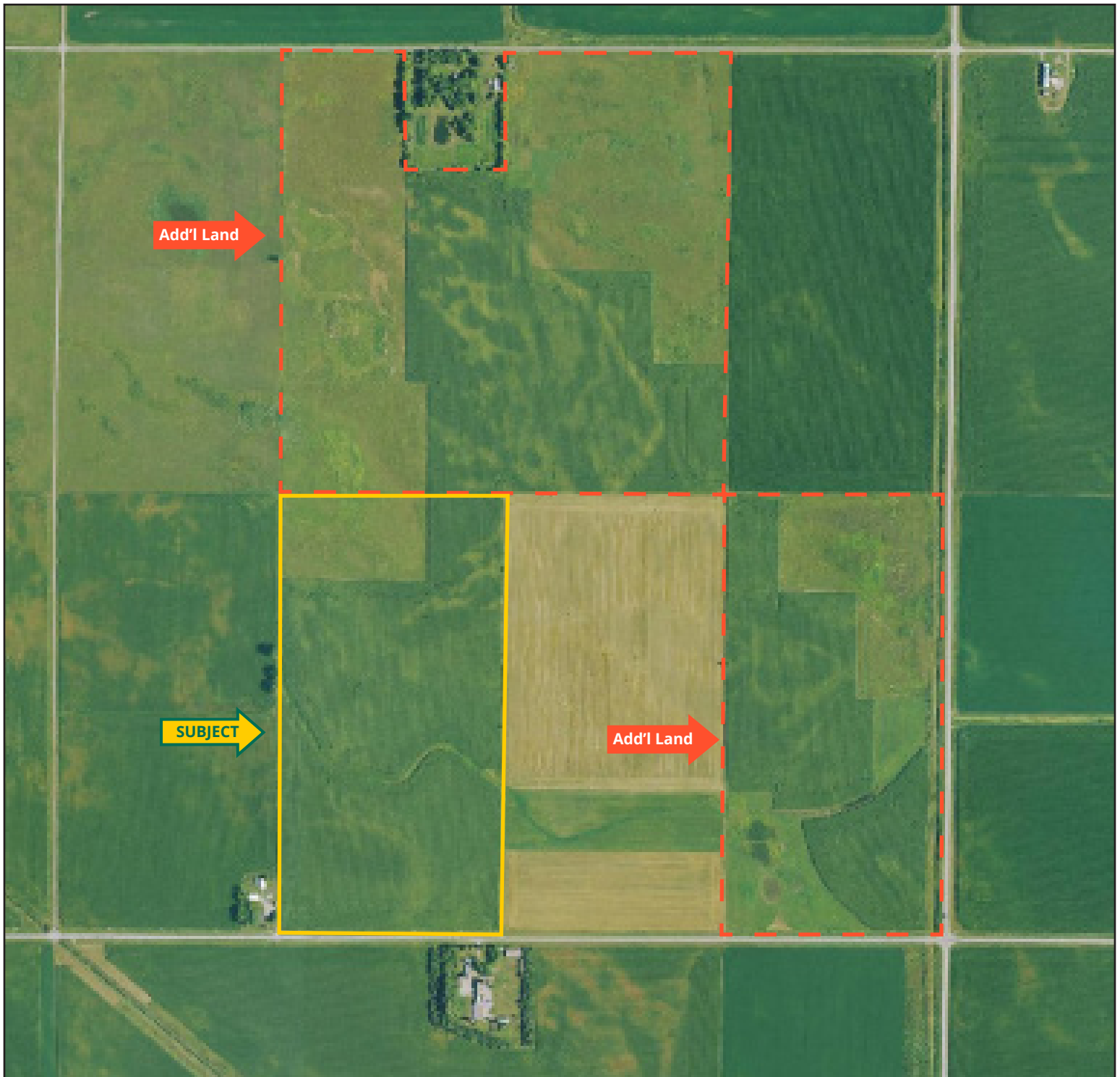
 Cropland Non-cropland CRP

Farm 5533
Tract 236

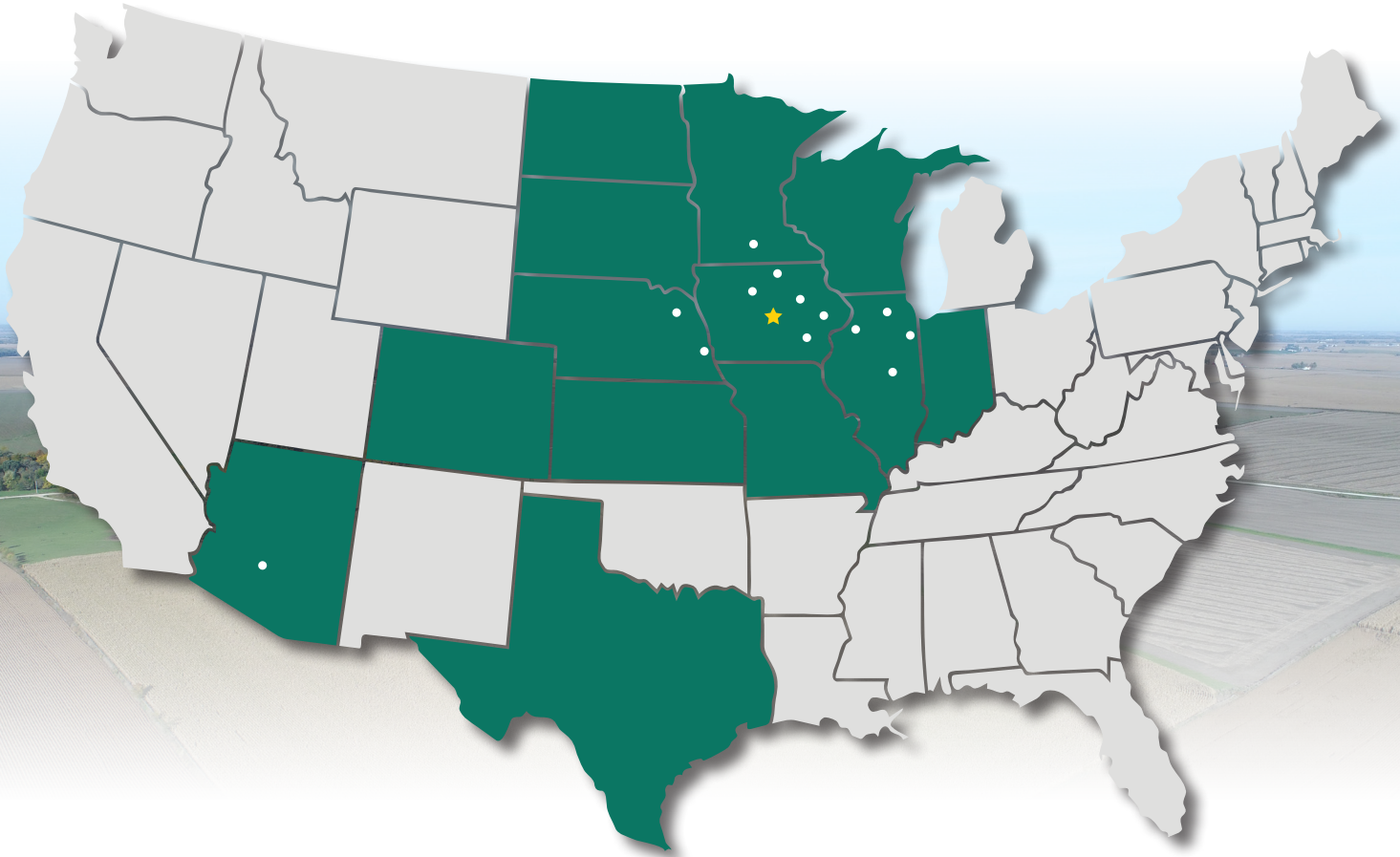
Wetland Determination Identifiers

- Restricted Use
- ▼ Limited Restrictions
- Exempt from Conservation Compliance Provisions





MAKE THE MOST OF YOUR FARMLAND INVESTMENT



Real Estate Sales and Auctions
Professional Buyer Representation
Certified Farm Appraisals
Professional Farm Management

641.423.9531 | 2800 4th St. SW, Ste. 7 | Mason City, IA 50401 | www.Hertz.ag

JAMESON ANDERS
319.269.7975
JamesonA@Hertz.ag

CHRIS SMITH, ALC, AFM
515.229.7262
ChrisS@Hertz.ag