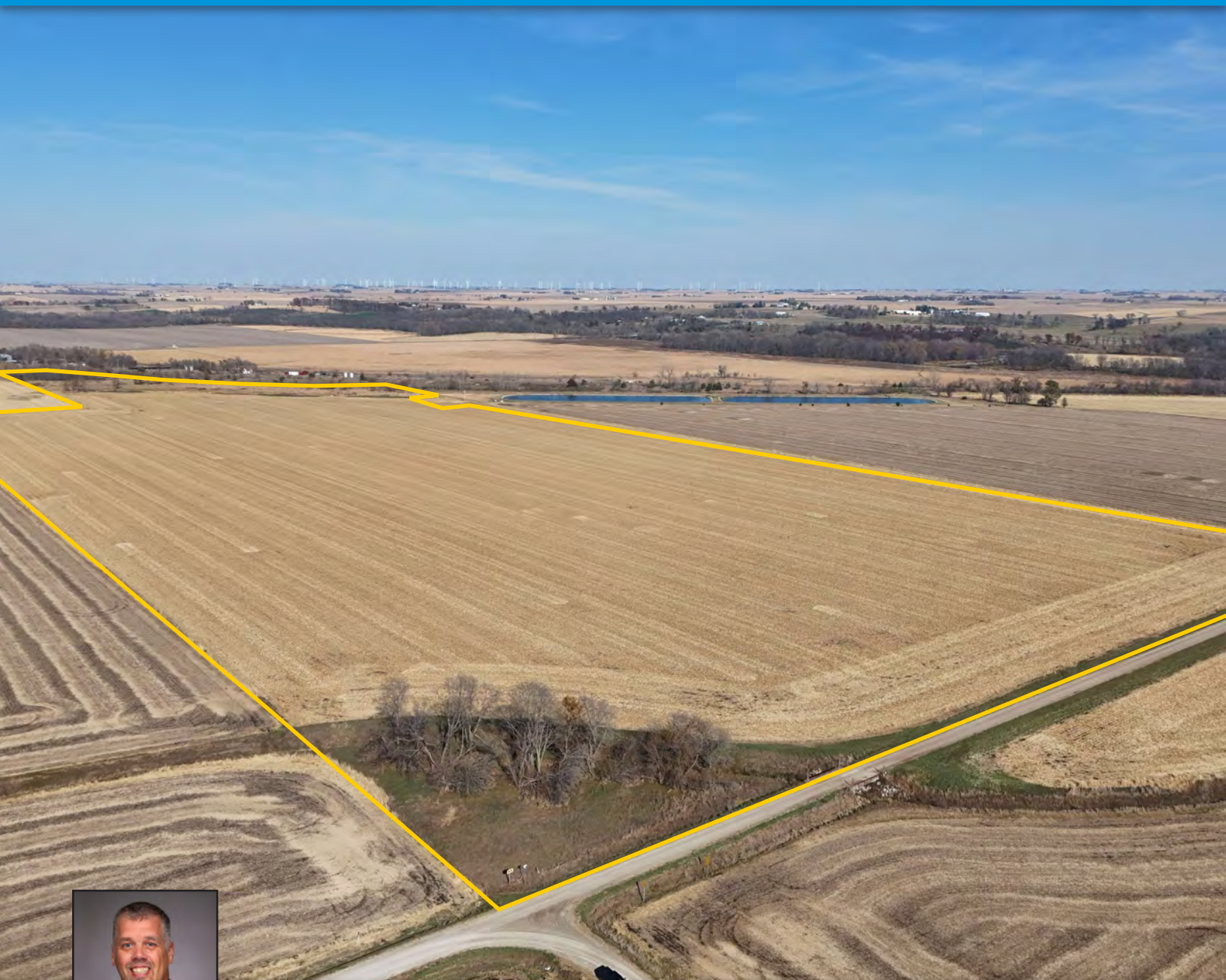


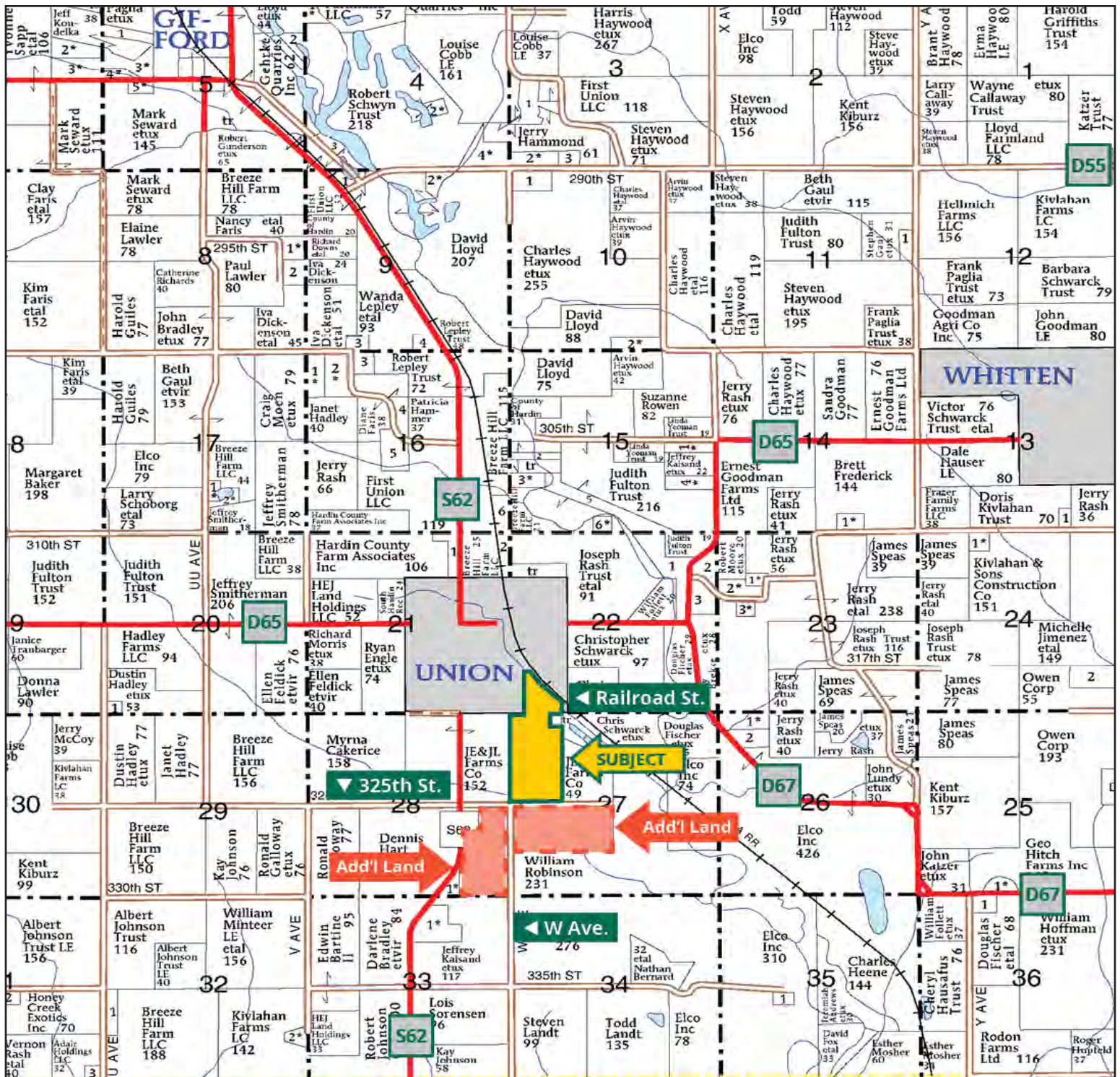
BDL Farms, LC



KYLE HANSEN, ALC
Licensed Broker in IA, NE, MO & AZ
515.370.3446
KyleH@Hertz.ag

515.382.1500 | 415 S. 11th St.
Nevada, IA 50201 | www.Hertz.ag

96.00 Acres, m/l
Hardin County, IA



Map reproduced with permission of Farm & Home Publishers, Ltd.

515.382.1500 | 415 S. 11th St. | Nevada, IA 50201 | www.Hertz.ag

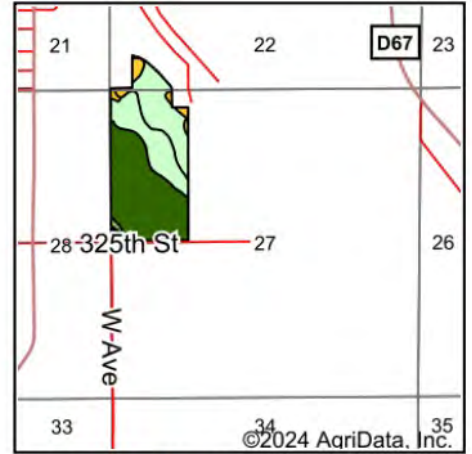
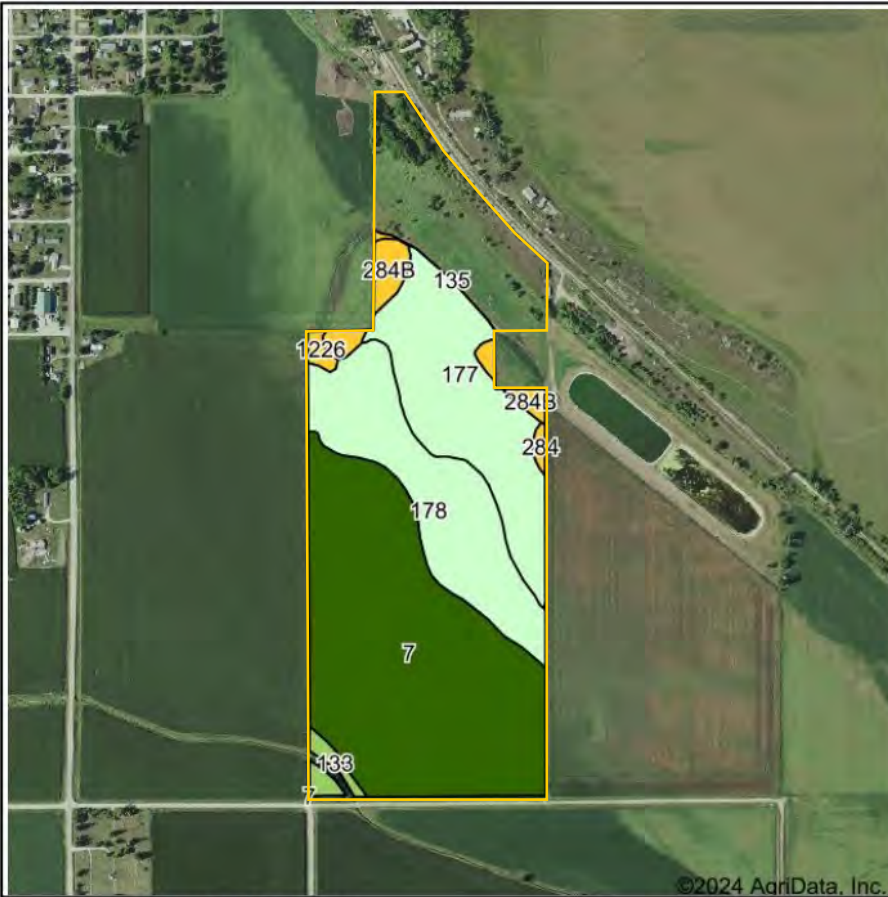
KYLE HANSEN, ALC
 515.370.3446
 KyleH@Hertz.ag

Est. FSA/Eff. Crop Acres: 94.58 | Est. Current Acres in Production: 81.59 | Soil Productivity: 81.90 CSR2



515.382.1500 | 415 S. 11th St. | Nevada, IA 50201 | www.Hertz.ag

KYLE HANSEN, ALC
515.370.3446
KyleH@Hertz.ag



State: **Iowa**
 County: **Hardin**
 Location: **27-86N-19W**
 Township: **Union**
 Acres: **81.59**
 Date: **11/6/2024**



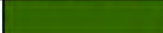






Maps Provided By:

 © AgriData, Inc. 2023 www.AgriDataInc.com



Soils data provided by USDA and NRCS.

Area Symbol: IA083, Soil Area Version: 30

| Code | Soil Description | Acres | Percent of field | CSR2 Legend | Non-Irr Class *c | CSR2** |
|-------------------------|---|-------|------------------|---|------------------|-------------|
| 7 | Wiota silt loam, 0 to 2 percent slopes, rarely flooded | 40.94 | 50.1% |  | Iw | 100 |
| 177 | Saude loam, 0 to 2 percent slopes | 17.95 | 22.0% |  | Ils | 60 |
| 178 | Waukee loam, 0 to 2 percent slopes | 17.47 | 21.4% |  | Ils | 69 |
| 284B | Flagler sandy loam, 2 to 5 percent slopes | 2.98 | 3.7% |  | IIIe | 51 |
| 133 | Colo silty clay loam, 0 to 2 percent slopes, occasionally flooded | 1.27 | 1.6% |  | IIw | 78 |
| 1226 | Lawler loam, 0 to 2 percent slopes, rarely flooded | 0.65 | 0.8% |  | Ils | 59 |
| 284 | Flagler sandy loam, 0 to 2 percent slopes | 0.33 | 0.4% |  | IIIls | 56 |
| Weighted Average | | | | | 1.54 | 81.9 |

**IA has updated the CSR values for each county to CSR2.

*c: Using Capabilities Class Dominant Condition Aggregation Method

Location

From Union: Go south on Co. Hwy S62 for 1 mile and then east onto 325th St. for 0.4 miles. Property is on the north side of the road.

Simple Legal

W½ NW¼ in Section 27 and E¾ SW¼ SW¼ west of the RR in Section 22, all in Township 86 North, Range 19 West of the 5th P.M., Hardin Co., IA. *Final abstract/title documents to govern legal description.*

Price & Terms

PRICE REDUCED!

- \$966,720 \$918,400
- \$10,070/acre \$9,566.67/acre
- 10% down upon acceptance of offer, balance due in cash at closing

Possession

As negotiated.

Real Estate Tax

Taxes Payable 2024 - 2025: \$2,872.00
 Net Taxable Acres: 96.00
 Tax per Net Taxable Acre: \$29.92

Lease Status

Leased for the 2025 crop year. Contact agent for details.

FSA Data

Part of Farm Number 1548
 Part of Tract 2366
 FSA/Eff. Crop Acres: 94.58*
 Current Acres in Production: 81.59*
 Corn Base Acres: 46.68*
 Corn PLC Yield: 156 Bu.
 Bean Base Acres: 44.29*
 Bean PLC Yield: 48 Bu.
 *Acres are estimated pending reconstitution of farm by the Hardin County FSA office.

NRCS Classification

NHEL: Non-Highly Erodible Land.
 PCNW: Prior-Converted Non-Wetlands.

Soil Types/Productivity

Primary soil is Wiota. CSR2 on the est. current acres in production is 81.90. See soil map for detail.

Land Description

Level to gently sloping.

Drainage

Natural.

Buildings/Improvements

None.

Water & Well Information

None.

Flood Plain

The entire property lies within a flood plain. Contact agent for details.

Comments

Nice laying farm with good soils in southeast Hardin County. Part of the farm lies within the city limits of Union, Iowa.

Additional Land for Sale

Seller has 2 additional tracts of land for sale. One tract is located south of this of this property. The other tract is located southwest of this property. See Additional Land Aerial Photo.



The information gathered for this brochure is from sources deemed reliable, but cannot be guaranteed by Hertz Real Estate Services or its staff. All acres are considered more or less, unless otherwise stated. All property boundaries are approximate. Soil productivity ratings are based on the information currently available in the USDA/NRCS soil survey database. Those numbers are subject to change on an annual basis.

Southeast looking Northwest



Northwest looking Southeast





515.382.1500 | 415 S. 11th St. | Nevada, IA 50201 | www.Hertz.ag

KYLE HANSEN, ALC
515.370.3446
KyleH@Hertz.ag

MAKE THE MOST OF YOUR FARMLAND INVESTMENT



**Real Estate Sales and Auctions | Professional Buyer Representation
Certified Farm Appraisals | Professional Farm Management**

515.382.1500 | 415 S. 11th St. | Nevada, IA 50201 | www.Hertz.ag

KYLE HANSEN, ALC
515.370.3446
KyleH@Hertz.ag