

# Land For Sale

**ACREAGE:**

**75.09 Acres, m/l**

**LOCATION:**

**Clinton County, IA**

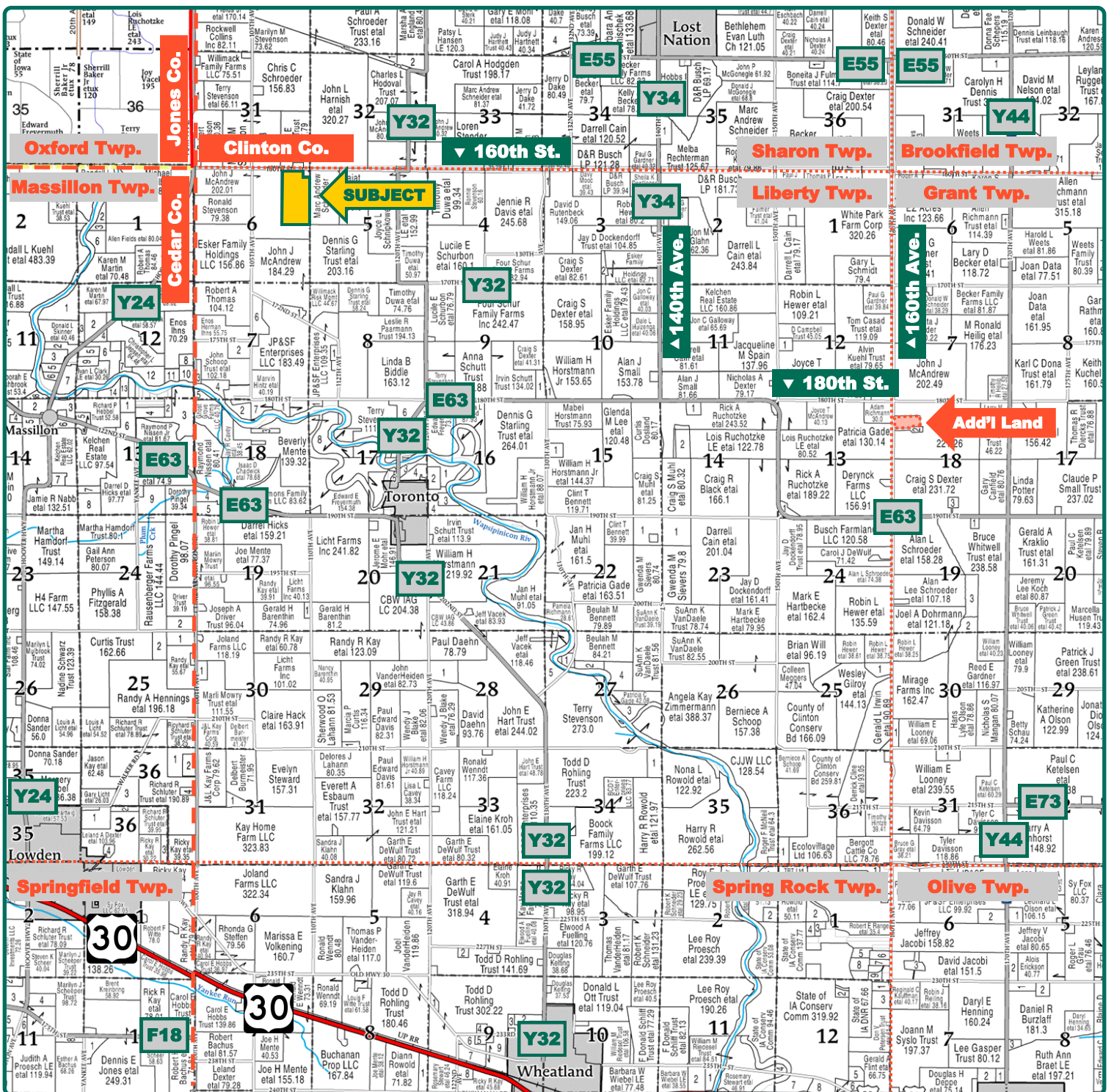


## Property Key Features

- Located 5 Miles Southwest of Lost Nation, Iowa
- 74.84 Est. FSA/Eff. Crop Acres with a 70.30 CSR2
- Productive Clinton County Farm

**Troy Louwagie, ALC**  
Licensed Broker in IA & IL  
**319-721-4068**  
**TroyL@Hertz.ag**

**319-895-8858**  
102 Palisades Road & Hwy. 1  
Mount Vernon, IA 52314  
**www.Hertz.ag**



Map reproduced with permission of Farm & Home Publishers, Ltd.

**Troy Louwagie, ALC**  
Licensed Broker in IA & IL  
**319-721-4068**  
TroyL@Hertz.ag

**319-895-8858**  
102 Palisades Road & Hwy. 1  
Mount Vernon, IA 52314  
**www.Hertz.ag**



**FSA/Eff. Crop Acres: 74.84\***  
**Corn Base Acres: 49.22\***  
**Bean Base Acres: 25.29\***  
**Soil Productivity: 70.30 CSR2**

*\*Acres are estimated.*

## Property Information

**75.09 Acres, m/l**

### Location

**From Lost Nation:** 1 mile south on 140th Ave. and 3 miles west on 160th St. The property is on the south side of the road.

### Legal Description

That part of the Western portion of the E½ of the NE¼ of Section 6, Township 82 North, Range 1 East of the 5th P.M., Clinton County, Iowa. Updated abstract to govern.

### Price & Terms

- \$938,625.00
- \$12,500/acre
- 10% down upon acceptance of offer; balance due in cash at closing.

### Possession

Negotiable.

### Real Estate Tax

Taxes Payable 2023 - 2024: \$2,938.00\*  
 Net Taxable Acres: 75.09\*  
 Tax per Net Taxable Acre: \$39.12\*  
 Tax Parcel ID #: Part of 3400891000 & 3400900000

*\*Taxes estimated pending survey of eastern boundary. Clinton County Treasurer/Assessor will determine final tax figures.*

### FSA Data

Farm 8799, Part of Tract 63  
 FSA/Eff. Crop Acres: 74.84\*  
 Corn Base Acres: 49.22\*  
 Corn PLC Yield: 169 Bu.  
 Bean Base Acres: 25.29\*  
 Bean PLC Yield: 50 Bu.

*\*Acres are estimated pending reconstitution of farm by the Clinton County FSA office.*

### Soil Types/Productivity

Primary soils are Clyde, Schley and Sparta. CSR2 on the estimated FSA/Eff. crop acres is 70.30. See soil map for detail.

### Land Description

Topography is level to gently rolling.

### Drainage

Drainage natural with some tile.

### Buildings/Improvements

None.

### Water & Well Information

None.

### Survey

The eastern boundary of this property will be marked by a licensed surveyor prior to closing.

**Troy Louwagie, ALC**  
 Licensed Broker in IA & IL  
**319-721-4068**  
**TroyL@Hertz.ag**

**319-895-8858**  
 102 Palisades Road & Hwy. 1  
 Mount Vernon, IA 52314  
**www.Hertz.ag**



### Comments

This is a productive Clinton County farm with a 70.30 CSR2.

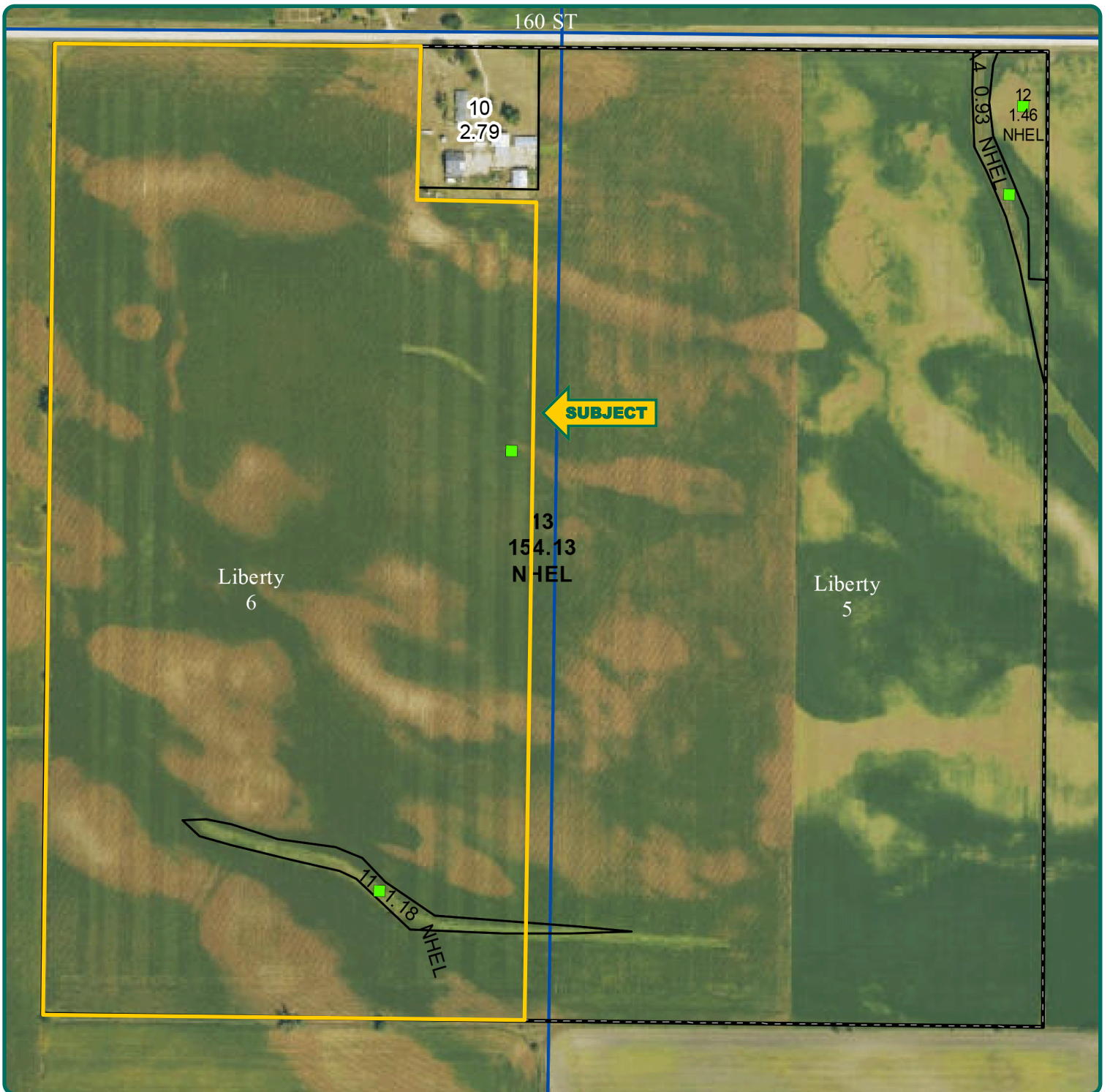
### Additional Land for Sale

Seller has an additional tract of land for sale located southeast of this property. See Additional Land Aerial Photo.

*The information gathered for this brochure is from sources deemed reliable, but cannot be guaranteed by Hertz Real Estate Services or its staff. All acres are considered more or less, unless otherwise stated. All property boundaries are approximate. Soil productivity ratings are based on the information currently available in the USDA/NRCS soil survey database. Those numbers are subject to change on an annual basis.*

**Troy Louwagie, ALC**  
Licensed Broker in IA & IL  
**319-721-4068**  
**TroyL@Hertz.ag**

**319-895-8858**  
102 Palisades Road & Hwy. 1  
Mount Vernon, IA 52314  
**www.Hertz.ag**



**Troy Louwagie, ALC**  
Licensed Broker in IA & IL  
**319-721-4068**  
**TroyL@Hertz.ag**

**319-895-8858**  
102 Palisades Road & Hwy. 1  
Mount Vernon, IA 52314  
**www.Hertz.ag**



**Troy Louwagie, ALC**  
Licensed Broker in IA & IL  
**319-721-4068**  
**TroyL@Hertz.ag**

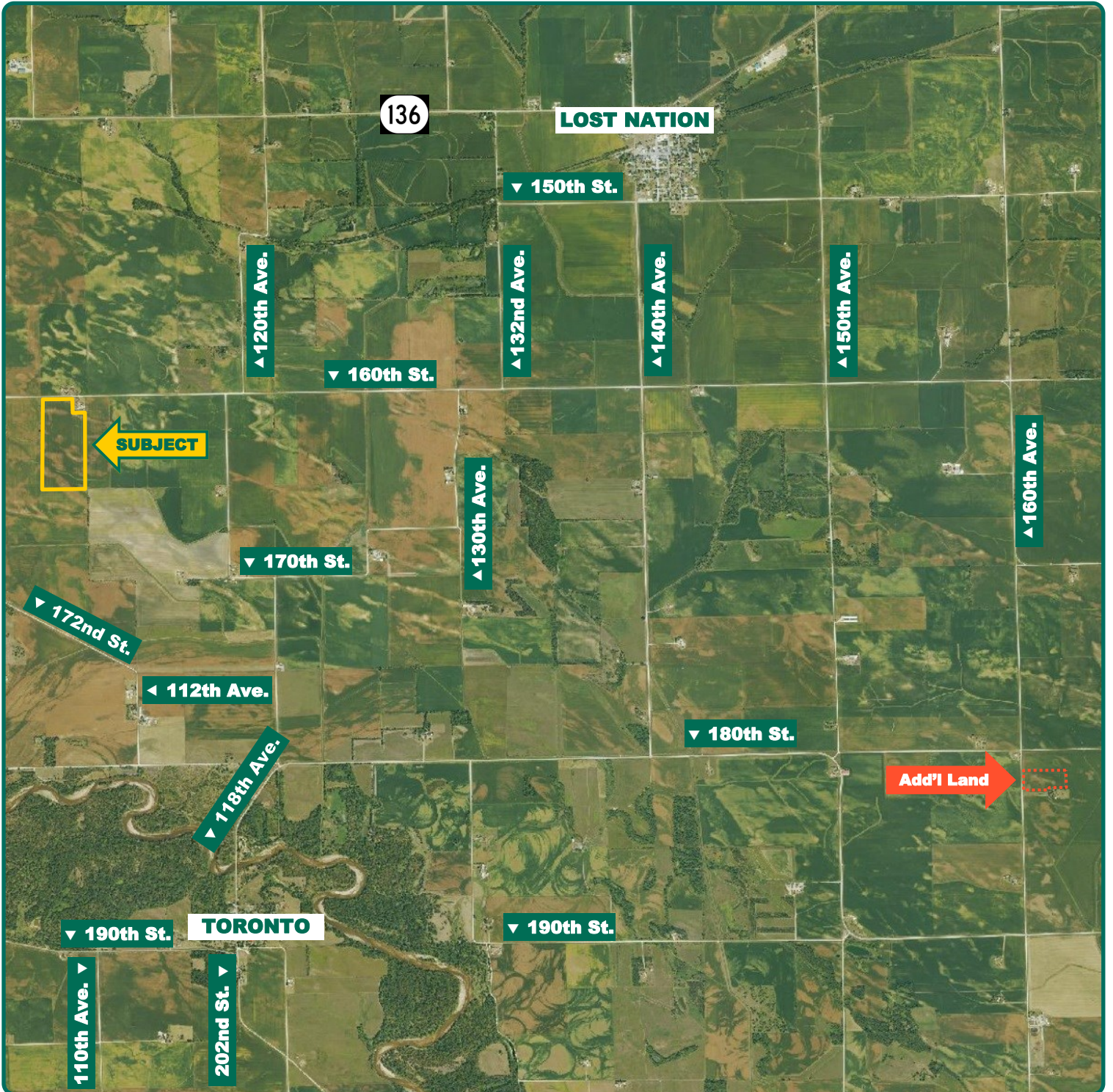
**319-895-8858**  
102 Palisades Road & Hwy. 1  
Mount Vernon, IA 52314  
**www.Hertz.ag**



**Troy Louwagie, ALC**  
Licensed Broker in IA & IL  
**319-721-4068**  
**TroyL@Hertz.ag**

**319-895-8858**  
102 Palisades Road & Hwy. 1  
Mount Vernon, IA 52314  
**www.Hertz.ag**

# Additional Land Aerial Photo



**Troy Louwagie, ALC**  
Licensed Broker in IA & IL  
**319-721-4068**  
[TroyL@Hertz.ag](mailto:TroyL@Hertz.ag)

**319-895-8858**  
102 Palisades Road & Hwy. 1  
Mount Vernon, IA 52314  
[www.Hertz.ag](http://www.Hertz.ag)