

ACREAGE:

1,006.26 Acres, m/l
in 12 Parcels
Iroquois County, IL

Wednesday
October 4, 2023
9:00 a.m.

**See Brochure for
Detailed
Information**



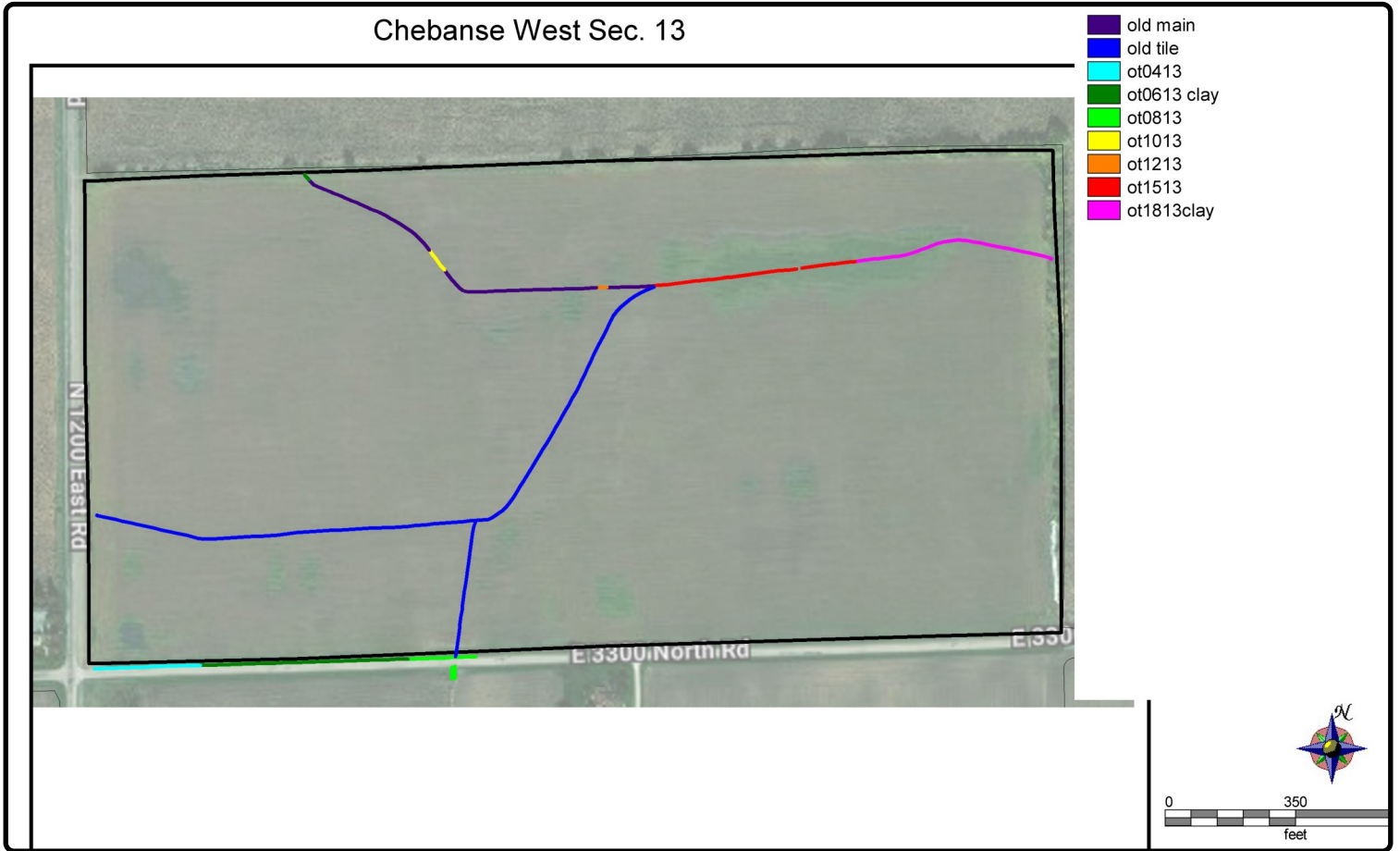
Parcel
8
.....
82.01 Ac.

Parcel
4
.....
108.52 Ac.

Melissa Halpin
Licensed Broker in IL & IN
815-228-0575
MelissaH@Hertz.ag

815-935-9878
200 E Court, Ste. 600
Kankakee, IL 60901
www.Hertz.ag

Eric Wilkinson, AFM
Designated Managing Broker in IL
217-552-3777
EricW@Hertz.ag

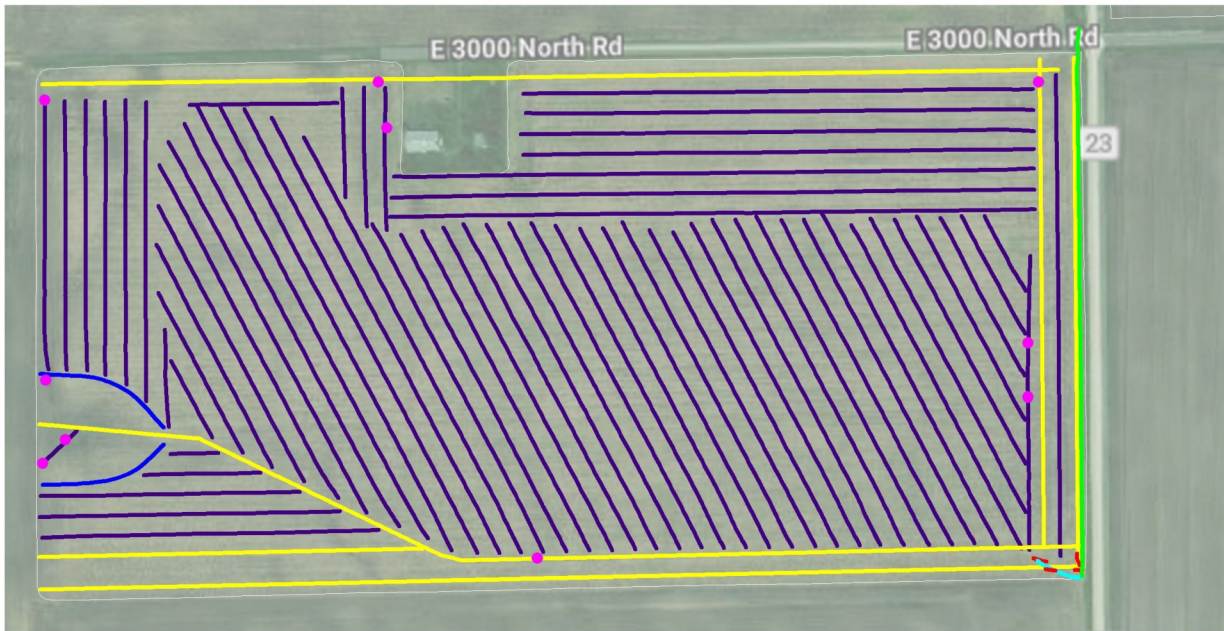


Melissa Halpin
 Licensed Broker in IL & IN
815-228-0575
MelissaH@Hertz.ag

815-935-9878
 200 E Court, Ste. 600
 Kankakee, IL 60901
www.Hertz.ag

Eric Wilkinson, AFM
 Designated Managing Broker in IL
217-552-3777
EricW@Hertz.ag

Chebanse West Sec. 6



- 4" CA
- 6" CA
- 10" 2013
- 12" DW 2013
- Line
- Old 8" Clay
- Riser

Melissa Halpin
 Licensed Broker in IL & IN
815-228-0575
MelissaH@Hertz.ag

815-935-9878
 200 E Court, Ste. 600
 Kankakee, IL 60901
www.Hertz.ag

Eric Wilkinson, AFM
 Designated Managing Broker in IL
217-552-3777
EricW@Hertz.ag

Milks Grove Sec. 24



■ Tile 6

Melissa Halpin
Licensed Broker in IL & IN
815-228-0575
MelissaH@Hertz.ag

815-935-9878
200 E Court, Ste. 600
Kankakee, IL 60901
www.Hertz.ag

Eric Wilkinson, AFM
Designated Managing Broker in IL
217-552-3777
EricW@Hertz.ag

Milks Grove Sec. 12



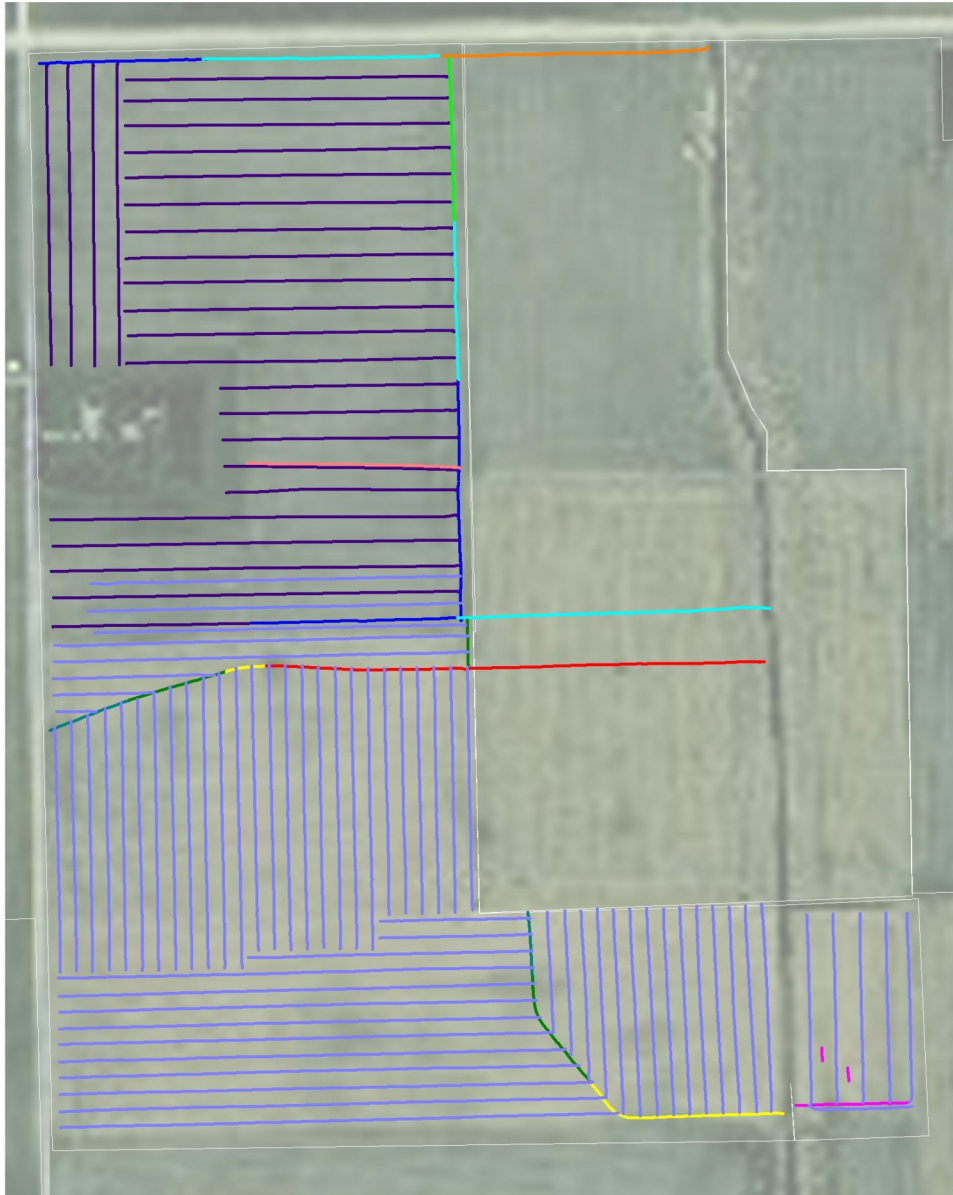
4" 2013	11087.51 ft
Existing Tile	5150.31 ft
Old Main	2037.39 ft
Old Tile	284.36 ft
Pipeline	1333.03 ft

Melissa Halpin
 Licensed Broker in IL & IN
815-228-0575
MelissaH@Hertz.ag

815-935-9878
 200 E Court, Ste. 600
 Kankakee, IL 60901
www.Hertz.ag

Eric Wilkinson, AFM
 Designated Managing Broker in IL
217-552-3777
EricW@Hertz.ag

Ashkum West Sec. 29



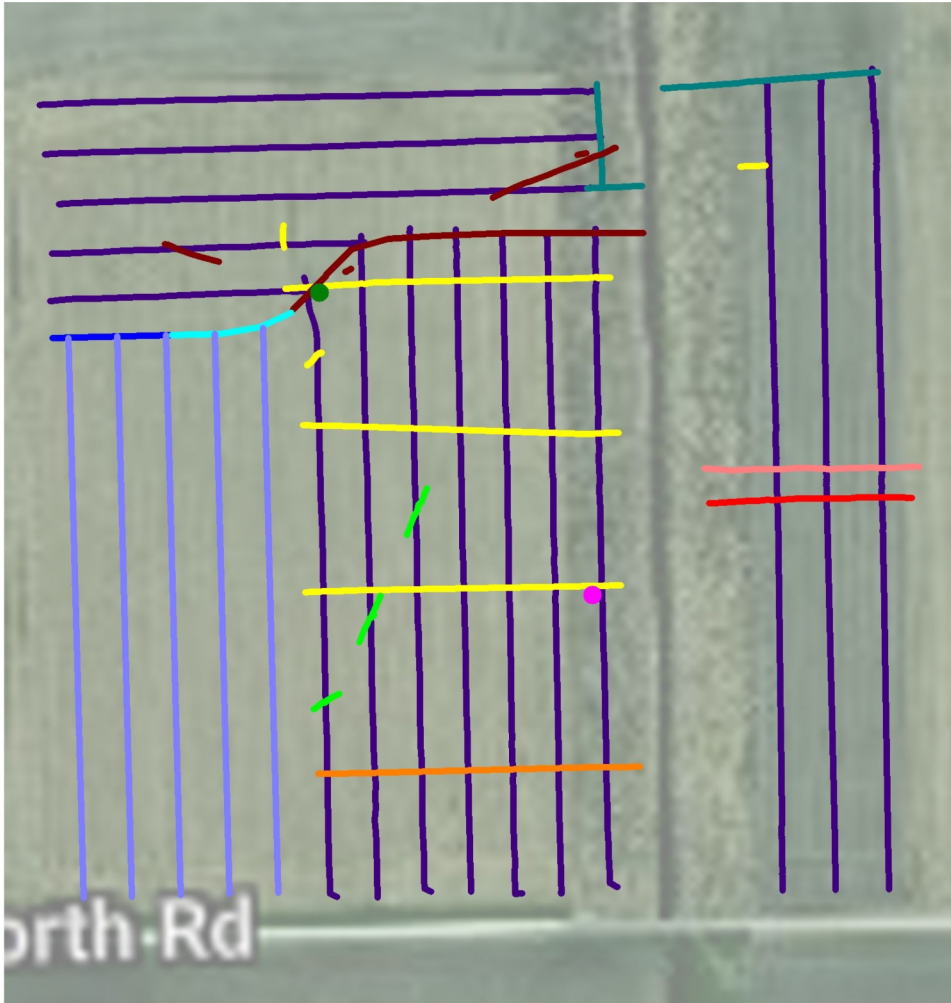
4" 2008	24535.46 ft
4plow2022	56398.46 ft
6" 2008	1890.60 ft
6DUG2022	452.73 ft
8" 2008	2166.06 ft
8DUG2022	819.06 ft
10" 2008	494.38 ft
10DUG2022	752.90 ft
12" 2008	807.20 ft
12DUG2022	1507.29 ft
Old 5"	647.02 ft
ot plastic	401.07 ft

Melissa Halpin
Licensed Broker in IL & IN
815-228-0575
MelissaH@Hertz.ag

815-935-9878
200 E Court, Ste. 600
Kankakee, IL 60901
www.Hertz.ag

Eric Wilkinson, AFM
Designated Managing Broker in IL
217-552-3777
EricW@Hertz.ag

Ashkum West Sec. 29

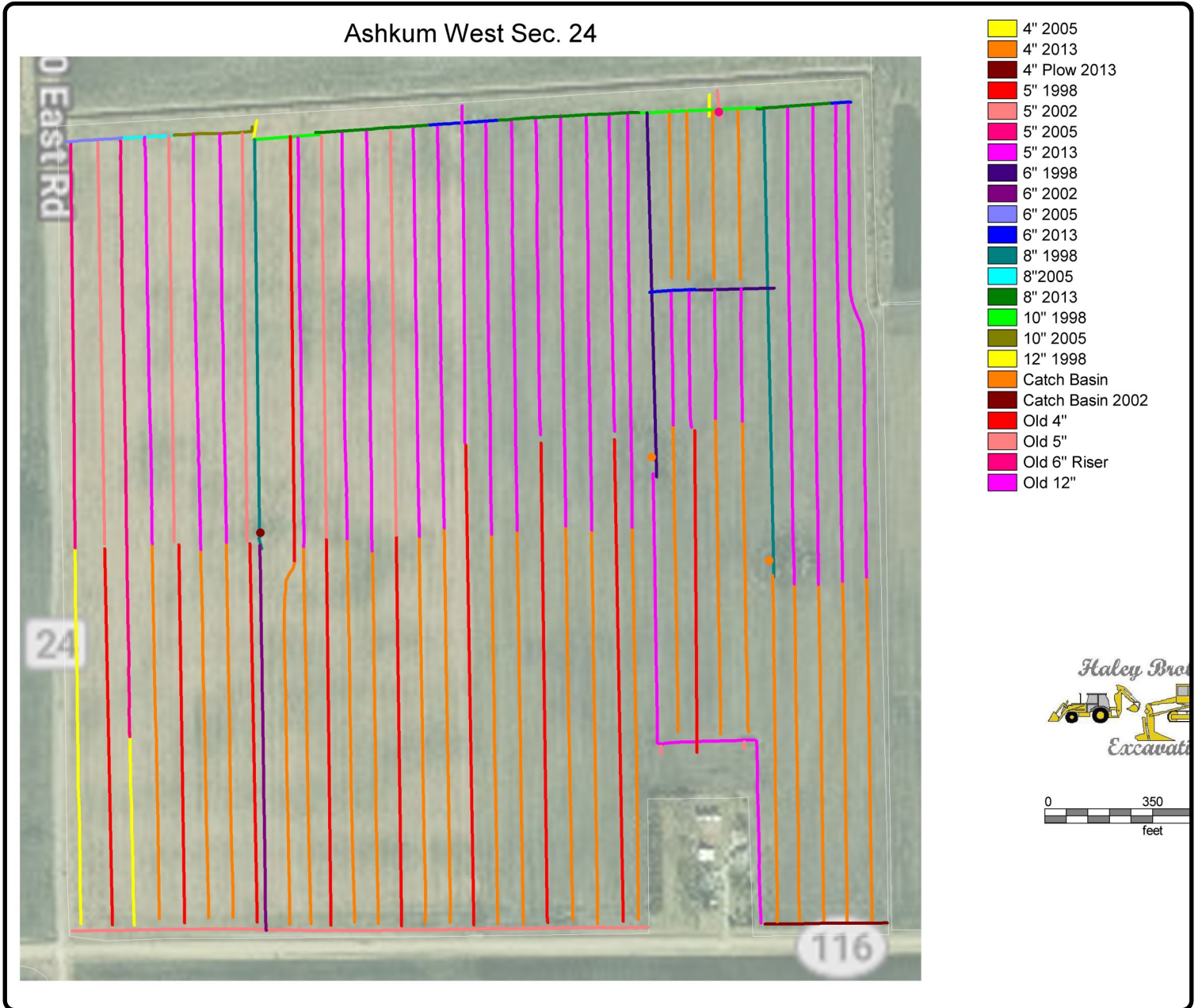


- 4"
- 4" plastic
- 5" plastic
- 6"
- 6" plastic
- Catch Basin
- Old 4"
- Old 5"
- Old 6"
- Old 8"
- Old 10"
- Old 12"
- Riser

Melissa Halpin
 Licensed Broker in IL & IN
815-228-0575
MelissaH@Hertz.ag

815-935-9878
 200 E Court, Ste. 600
 Kankakee, IL 60901
www.Hertz.ag

Eric Wilkinson, AFM
 Designated Managing Broker in IL
217-552-3777
EricW@Hertz.ag



Melissa Halpin
Licensed Broker in IL & IN
815-228-0575
MelissaH@Hertz.ag

815-935-9878
200 E Court, Ste. 600
Kankakee, IL 60901
www.Hertz.ag

Ashkum West Sec. 25



- 4"
- 5"
- 6"
- 6" 2010
- 8"
- 8" 2010
- 10"
- 10" 2010
- 10" Riser
- Catch Basin
- Old 4"
- Old 5"
- Old 12"
- Pipeline

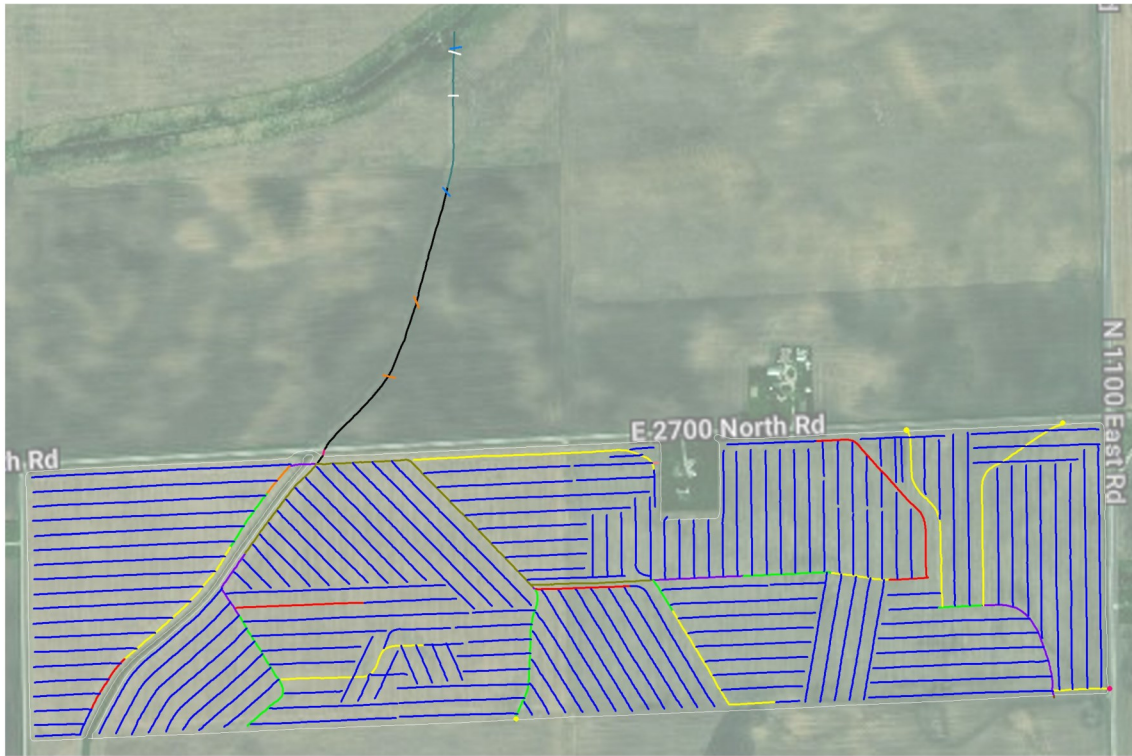


Melissa Halpin
 Licensed Broker in IL & IN
815-228-0575
MelissaH@Hertz.ag

815-935-9878
 200 E Court, Ste. 600
 Kankakee, IL 60901
www.Hertz.ag

Eric Wilkinson, AFM
 Designated Managing Broker in IL
217-552-3777
EricW@Hertz.ag

Ashkum East Sec.22



4" 2016	846.05 ft
4" Plow 2016	87299.64 ft
5" 2016	483.22 ft
5" Plow 2016	2027.62 ft
6" 2016	5986.91 ft
6" Blow Off	1.00 ft
8" 2016	2428.35 ft
10" 2016	173.38 ft
10" DW 2016	1556.47 ft
12" DW 2016	2493.07 ft
15" DW 2016	1466.64 ft
15" SDR 35 2016	27.96 ft
18" DW 2016	750.43 ft
Existing 18" CB	3.00 ft
Old 4" Clay	105.92 ft
Old 5" Clay	167.69 ft
Old 5" Clay H	23.04 ft
Old 6" Clay	119.72 ft
Old 7" Clay	8.96 ft



0 0.13 0

Melissa Halpin
Licensed Broker in IL & IN
815-228-0575
MelissaH@Hertz.ag

815-935-9878
200 E Court, Ste. 600
Kankakee, IL 60901
www.Hertz.ag

Eric Wilkinson, AFM
Designated Managing Broker in IL
217-552-3777
EricW@Hertz.ag