

# Property Surveys

**ACREAGE:**

**Date:**

**456.83 Acres, m/l**  
in 6 Parcels  
McLeod & Sibley Co., MN

**January 27, 2023**  
**11:00 a.m.**  
Register to Attend

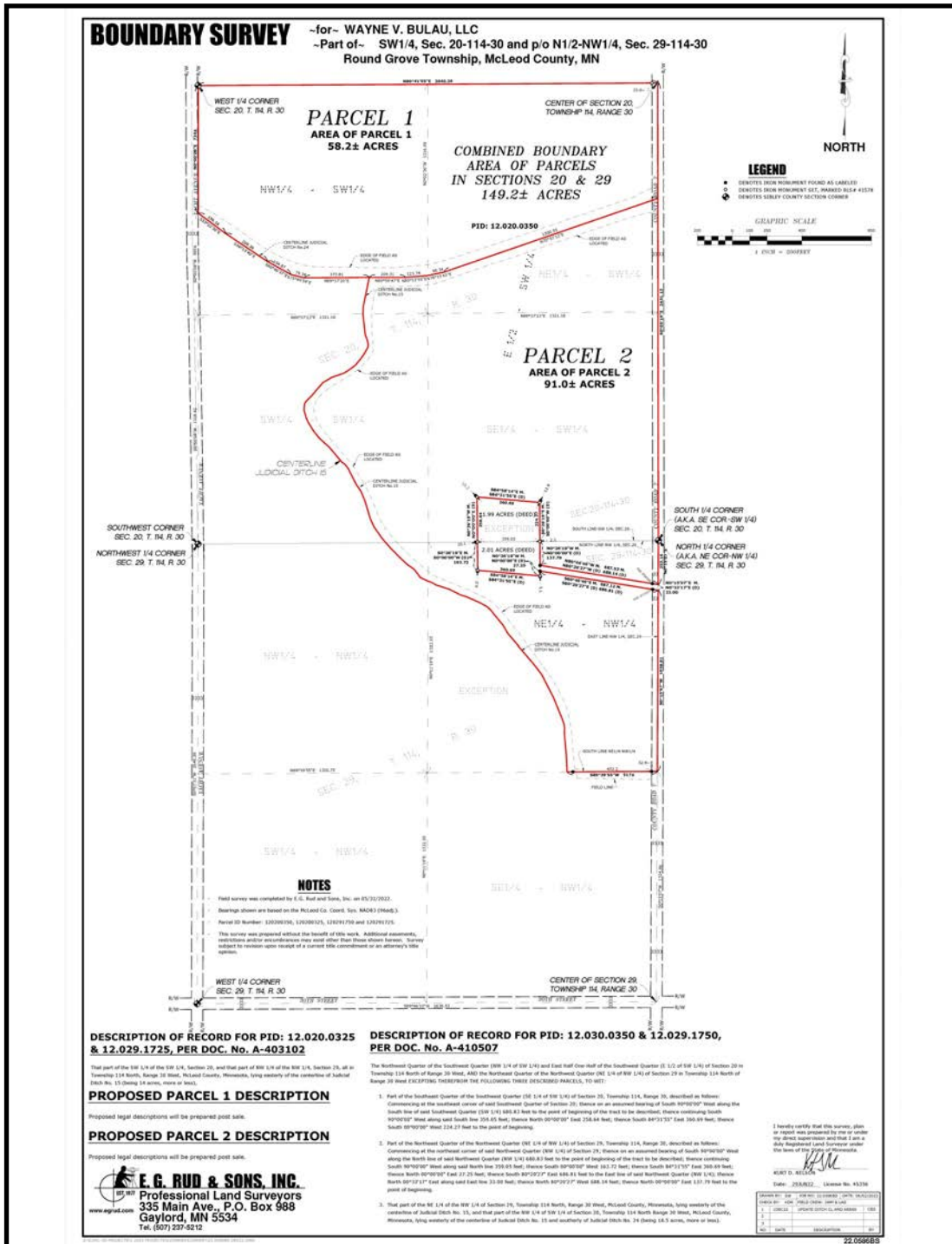
**See Brochure for  
Detailed Information**



**Geoff Mead, ALC**  
Licensed Salesperson in MN  
**218-232-2561**  
**GeoffM@Hertz.ag**

**507-345-5263**  
151 Saint Andrews Ct, Suite 1310  
Mankato, MN 56001  
**www.Hertz.ag**

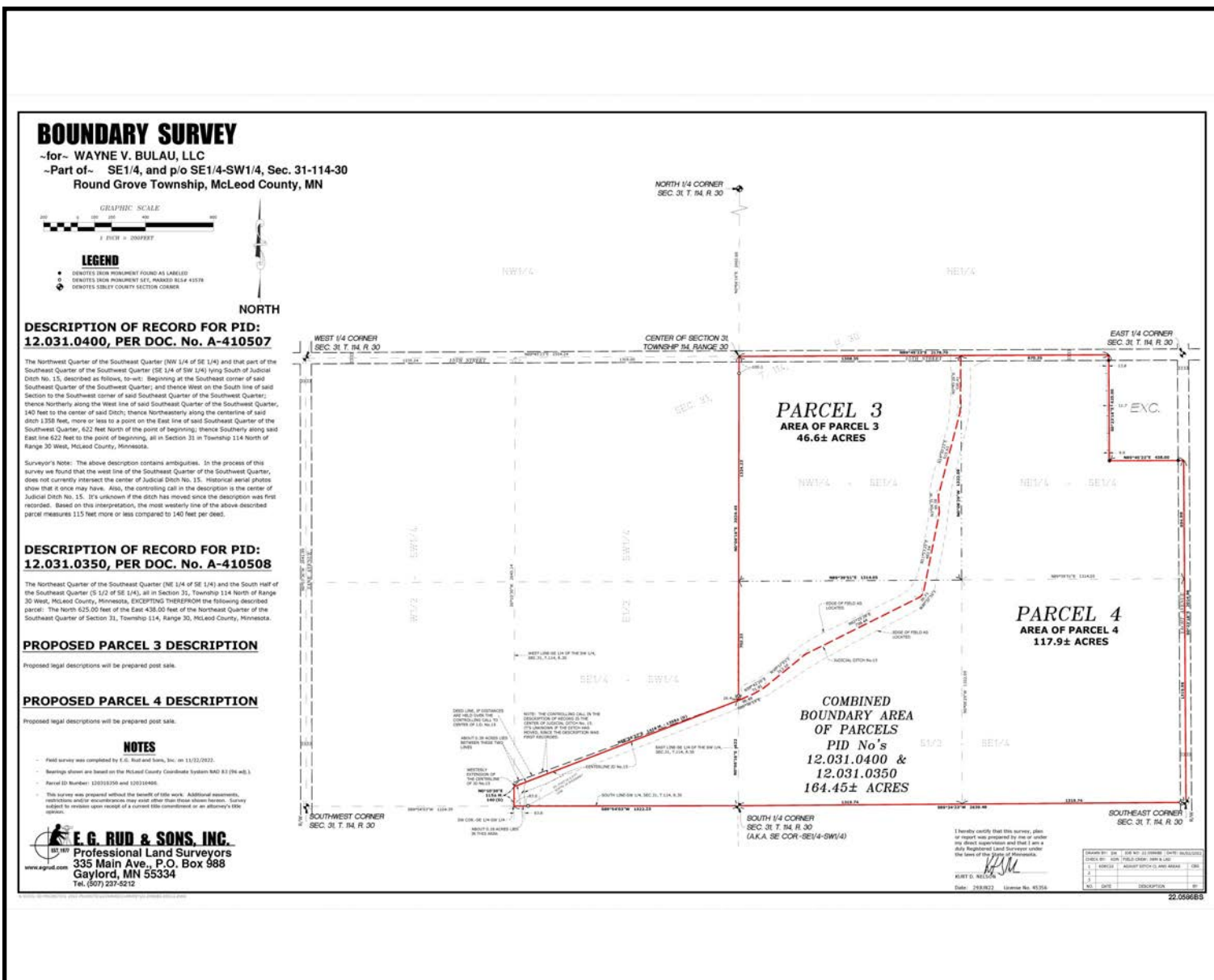
**Parcel 1 - 58.20 Acres, m/l**  
**Parcel 2 - 91.00 Acres, m/l**



**Geoff Mead, ALC**  
Licensed Salesperson in MN  
**218-232-2561**  
GeoffM@Hertz.ag

**507-345-5263**  
151 Saint Andrews Ct, Suite 1310  
Mankato, MN 56001  
**www.Hertz.ag**





Geoff Mead, ALC

Licensed Salesperson in MN

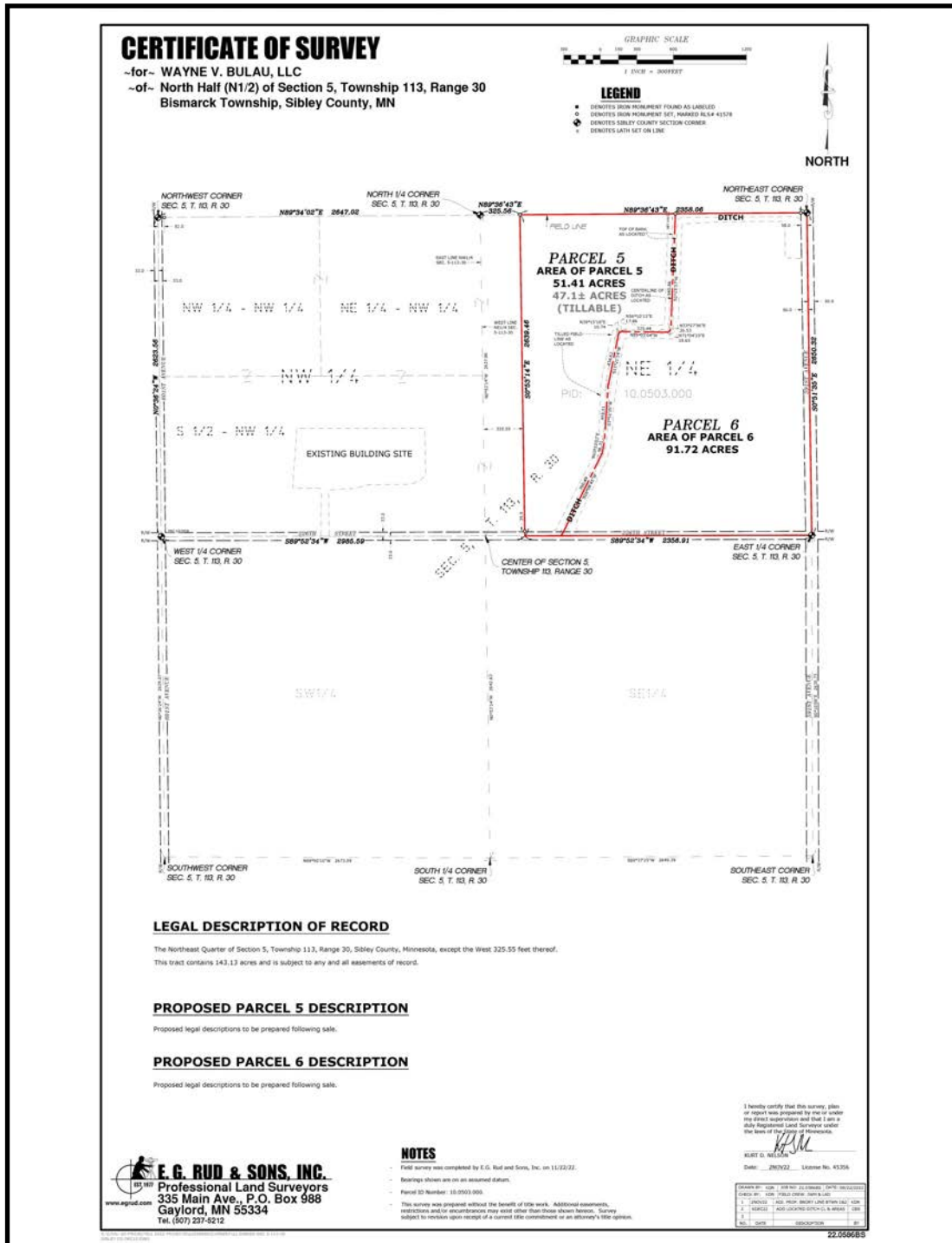
218-232-2561

GeoffM@Hertz.ag

507-345-5263

151 Saint Andrews Ct, Suite 1310  
Mankato, MN 56001  
[www.Hertz.ag](http://www.Hertz.ag)

**Parcel 5 - 51.41 Acres, m/l**  
**Parcel 6 - 91.72 Acres, m/l**



**Geoff Mead, ALC**  
Licensed Salesperson in MN  
**218-232-2561**  
**GeoffM@Hertz.ag**

**507-345-5263**  
151 Saint Andrews Ct, Suite 1310  
Mankato, MN 56001  
**www.Hertz.ag**