

Land Auction

ACREAGE:

157.84 Acres, m/l
Kearney County, NE

DATE:

Wednesday
November 16, 2022
10:00 a.m.

AUCTION TYPE:

Virtual-Online Only
bid.hertz.ag



Property Key Features

- Located in Bayer Seed Corn Block & Actively Growing Seed Corn Since 2011
- 3 Corners are Irrigated with a 3-Tower Pivot
- 2011 7-Tower & 3-Tower Reinke Pivots with Natural Gas Engine & Gearhead

Stan Lierz, AFM, ALC

Licensed Salesperson in NE, IA, & KS

402-618-4114

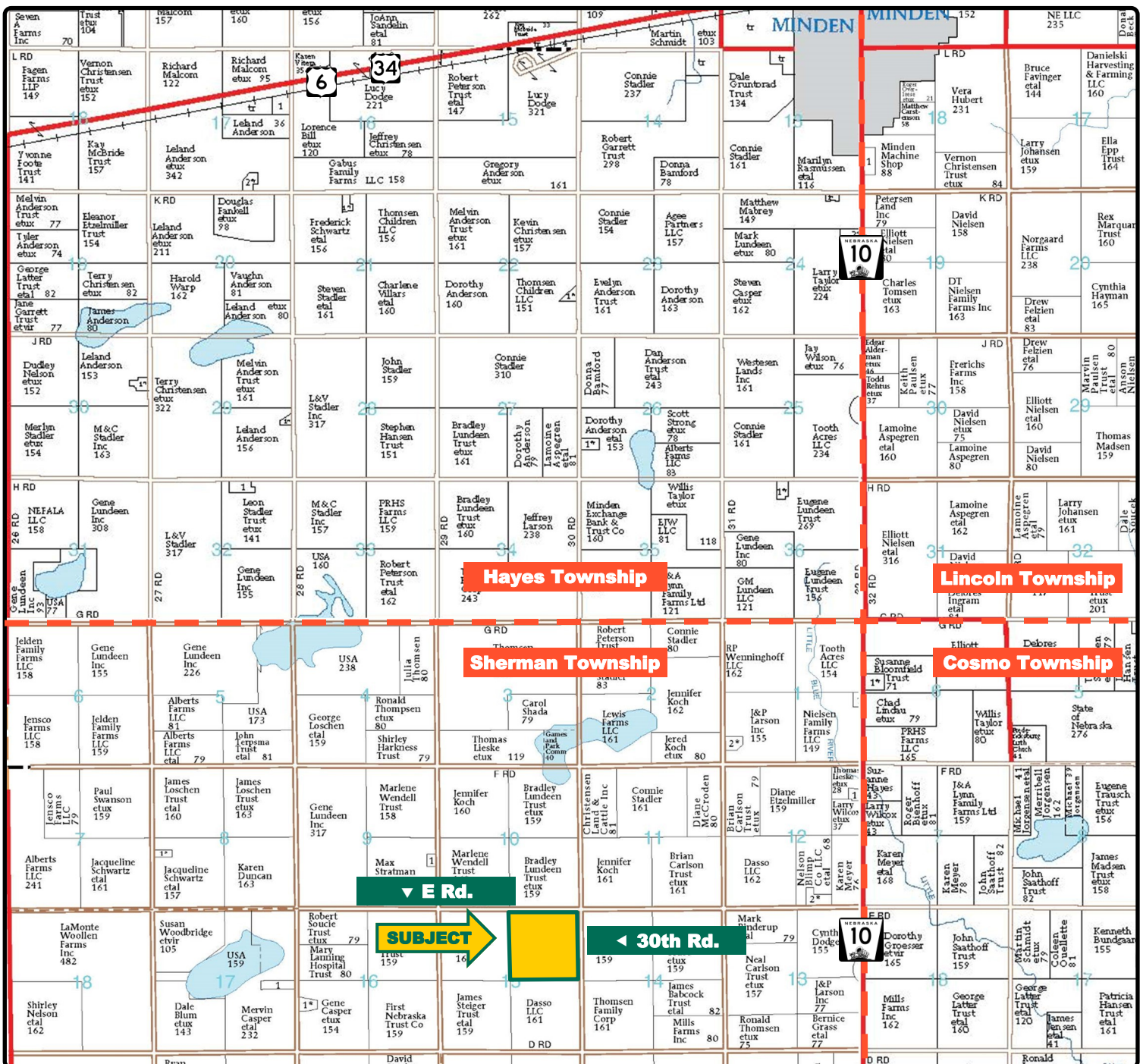
StanL@Hertz.ag

402-697-7500

11717 M Circle

Omaha, NE 68137

www.Hertz.ag



Map reproduced with permission of Farm & Home Publishers, Ltd.

Stan Lierz, AFM, ALC

Licensed Salesperson in NE, IA, & KS

402-618-4114

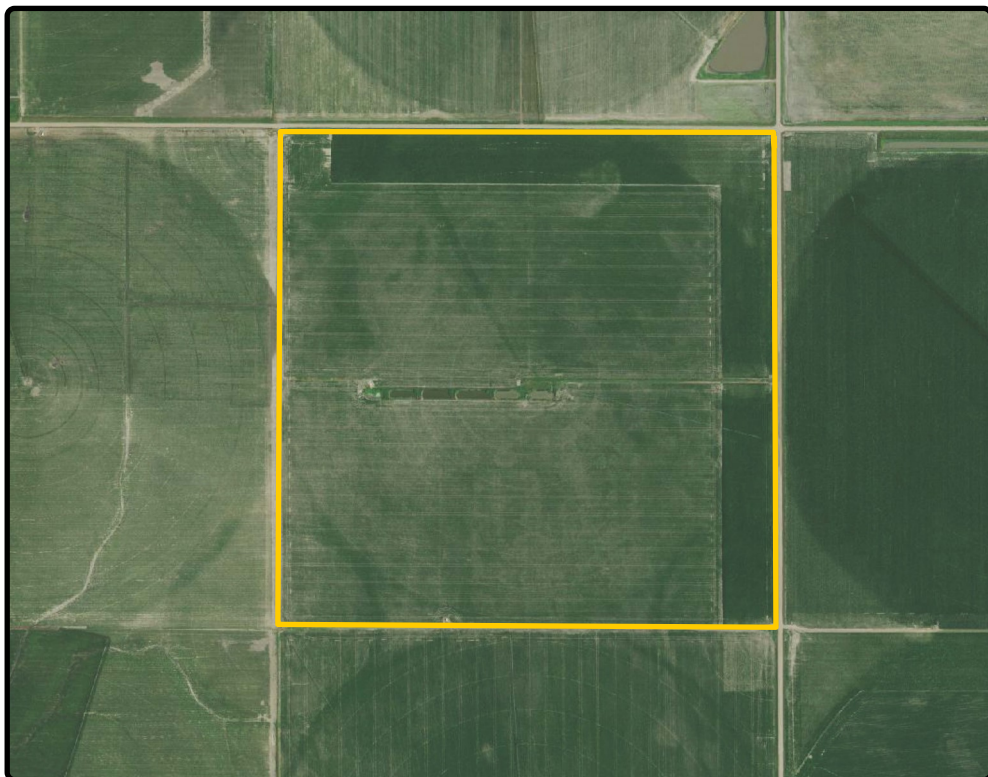
StanL@Hertz.ag

402-697-7500

11717 M Circle

Omaha, NE 68137

www.Hertz.ag



FSA/Eff. Crop Acres:	151.27
Corn Base Acres:	124.80
Bean Base Acres:	25.90
Soil Productivity:	66.80 NCCPI

Property Information

157.84 Acres, m/l

Location

From Minden: Go 5 miles south on Hwy. 10, then west on E Rd. for 2 miles. The farm is on the south side of the road.

Legal Description

NE¼ of Section 15, Township 5 North, Range 15 West of the 6th P.M., Kearney Co., NE.

Real Estate Tax

2021 Taxes Payable 2022: \$8,645.92
Net Taxable Acres: 157.84
Tax per Net Taxable Acre: \$54.78
Tax Parcel ID#: 0000145801

Lease Status

Open lease for 2023 crop year.

FSA Data

Farm Number 1114, Tract 2021
FSA/Eff. Crop Acres: 151.27
Corn Base Acres: 124.80
Corn PLC Yield: 197 Bu.
Bean Base Acres: 25.90
Bean PLC Yield: 57 Bu.

NRCS Classification

NHEL: Non-Highly Erodible Land.

Soil Types/Productivity

Main soil types are Butler, Holdrege, and Detroit. See soil map for details.

Mineral Rights

All mineral rights owned by the Seller, if any, will be transferred to the Buyer(s).

Land Description

Excellent nearly level irrigated cropland.

Drainage

Natural.

Water & Well Information

Well number G-083678 is located along the south property border.

Irrigation Information

- 2011 Reinke 7-Tower Pivot
- Used Reinke 3-Tower Pivot
- 8 Cylinder Natural Gas Engine
- Amarillo Gearhead

Stan Lierz, AFM, ALC

Licensed Salesperson in NE, IA, & KS

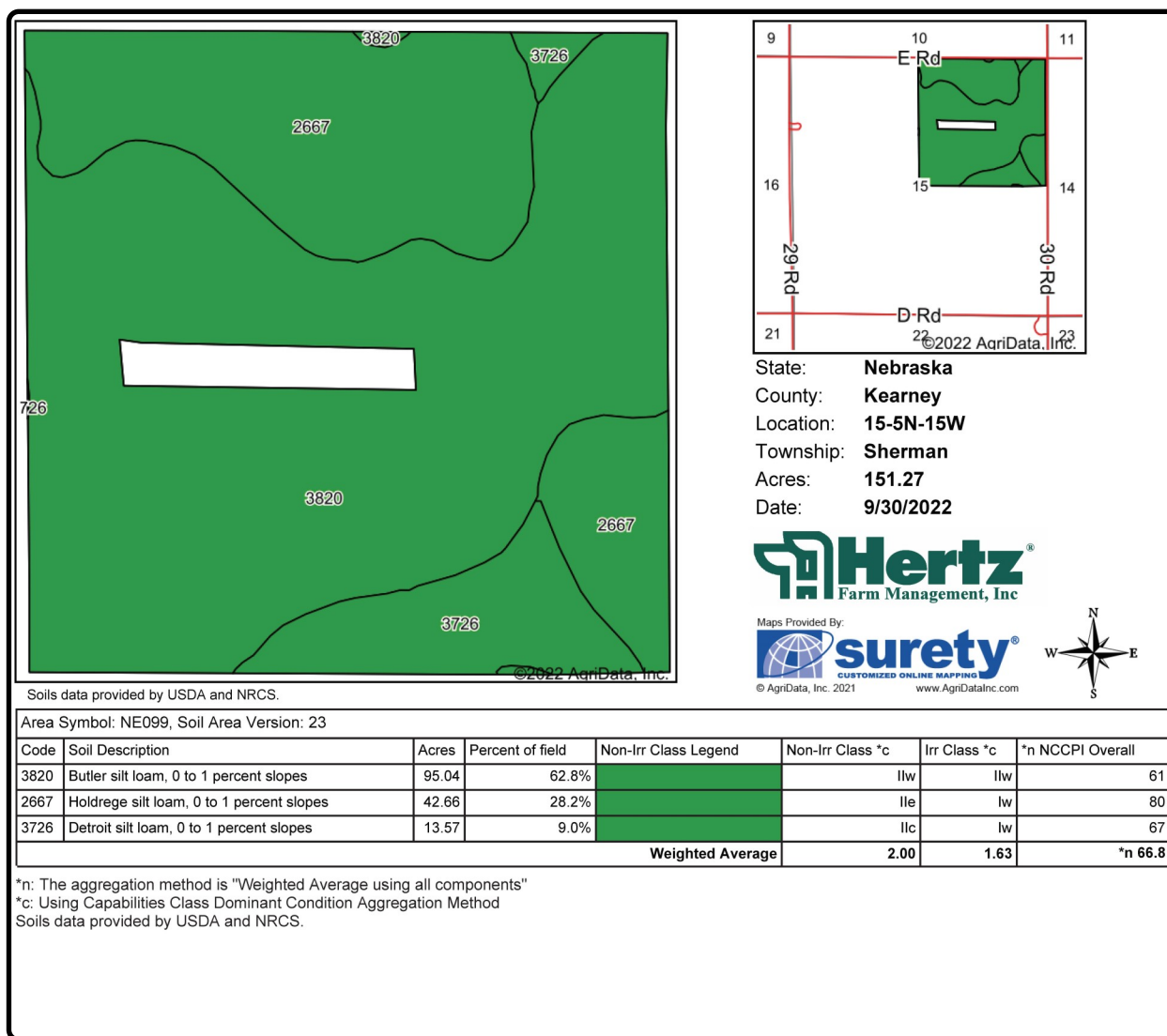
402-618-4114

StanL@Hertz.ag

402-697-7500

11717 M Circle
Omaha, NE 68137

www.Hertz.ag



The information gathered for this brochure is from sources deemed reliable, but cannot be guaranteed by Hertz Farm Management or its staff. All acres are considered more or less, unless otherwise stated. All property boundaries are approximate. Soil productivity ratings are based on the information currently available in the USDA/NRCS soil survey database. Those numbers are subject to change on an annual basis.

Stan Lierz, AFM, ALC
Licensed Salesperson in NE, IA, & KS
402-618-4114
StanL@Hertz.ag

402-697-7500
11717 M Circle
Omaha, NE 68137
www.Hertz.ag

Northwest looking Southeast



Southeast looking Northwest



South looking Northwest



East looking West



Stan Lierz, AFM, ALC
Licensed Salesperson in NE, IA, & KS
402-618-4114
StanL@Hertz.ag

402-697-7500
11717 M Circle
Omaha, NE 68137
www.Hertz.ag

Reinke 7 - Tower Pivot



Reinke 3 - Tower Pivot located in the SW Corner



Irrigation Well



Irrigation Motor



Date: **Wed., November 16, 2022**

Time: **10:00 a.m.**

Site: **Virtual Live Auction
Online Only
bid.hertz.ag**

Online Bidding Information

- To bid on these properties, you must be registered as an online bidder before the auction starts.
- We will be calling bids for this sale from a remote location and you will be able to view the auctioneer on-screen as they guide the process.
- To register, go to **bid.hertz.ag** from an internet browser. Do not use “www.” when typing the website address. Navigate to auction you wish to register for and click on the VIEW AUCTION button.
- Follow on-screen prompts/buttons.
- Contact Sale Manager, Stan Lierz at 402-618-4114 with questions.

Viewing Auction

To View Only on sale day, navigate to the auction via bid.hertz.ag (as above). Click on the “View Live” button. The auction is LIVE when the button is green.

Method of Sale

- Parcel will be offered as a single tract of land.
- Seller reserves the right to refuse any and all bids.

Seller

Midwest Farming Properties II LLC

Agency

Hertz Farm Management and their representatives are Agents of the Seller.

Auctioneer

Kyle Hansen

Announcements

Information provided herein was obtained from sources deemed reliable, but the Auctioneer makes no guarantees as to its accuracy. Prospective bidders are urged to fully inspect the property and to rely on their own conclusions. Announcements made the day of the auction will take precedence over previously printed material and/or oral statements. Bidding increments are at the discretion of the Auctioneer. Acreage figures are based on information currently available, but are not guaranteed.

Terms of Possession

10% down payment required the day of sale. Successful bidders are purchasing with no financing contingencies and must be prepared for cash settlement of their purchase on or before January 4, 2023, or after any objections to title have been cleared. Final settlement will require certified check or wire transfer. Possession will be given at settlement subject to the existing lease which expires February 28, 2023. Taxes will be prorated to December 31, 2022.

Contract & Title

Immediately upon conclusion of the auction, the high bidder will enter into a real estate contract and deposit the required earnest money with the designated escrow agent. The Seller will provide an owner's title insurance policy in the amount of the contract price. If there are any escrow closing service fees, they will be shared by the Seller and Buyer.

Stan Lierz, AFM, ALC

Licensed Salesperson in NE, IA, & KS

402-618-4114

StanL@Hertz.ag

402-697-7500

11717 M Circle

Omaha, NE 68137

www.Hertz.ag

Make the Most of Your Farmland Investment

- Real Estate Sales and Auctions
- Professional Buyer Representation
- Professional Farm Management
- Certified Farm Appraisals

Stan Lierz, AFM, ALC

Licensed Salesperson in NE, IA, & KS

402-618-4114

StanL@Hertz.ag

402-697-7500

11717 M Circle

Omaha, NE 68137

www.Hertz.ag