



HIGHLY ERODIBLE LAND AND WETLAND CONSERVATION DETERMINATION

Form with fields: Name Address, Request Date (May 22, 2012), County (Fayette), Agency or Person Requesting Determination (FSA), Tract No (7863), FSA Farm No. (5085)

Section I - Highly Erodible Land

Is a soil survey now available for making a highly erodible land determination? Yes
Are there highly erodible soil map units on this farm? Yes

Fields in this section have undergone a determination of whether they are highly erodible land (HEL) or not; fields for which an HEL Determination has not been completed are not listed. In order to be eligible for USDA benefits, a person must be using an approved conservation system on all HEL.

Table with columns: Field(s), HEL(Y/N), Sodbust(Y/N), Acres, Determination Date. Row 1: 1, Y, , 104.4, 5/22/2012

The Highly Erodible Land determination was completed in the office .

Section II - Wetlands

Are there hydric soils on this farm?

Fields in this section have had wetland determinations completed. See the Definition of Wetland Label Codes for additional information regarding allowable activities under the wetland conservation provisions of the Food Security Act and/or when wetland determinations are necessary to determine USDA program eligibility.

Table with columns: Field(s), Wetland Label*, Occurrence Year (CW)**, Acres, Determination Date, Certification Date

The wetland determination was completed in the . It was to the person on .

Remarks: Determination due to tract split of t2636 into t7863, t7864, and t7865.

I certify that the above determinations are correct and were conducted in accordance with policies and procedures contained in the National Food Security Act Manual.

Signature Designated Conservationist, Date (5/31/2012)

The U.S. Department of Agriculture (USDA) prohibits discrimination in all its programs and activities on the basis of race, color, national origin, gender, religion, age, disability, political beliefs, sexual orientation, and marital or family status.

To file a complaint of discrimination, write USDA, Director, Office of Civil Rights, Room 326W, Whitten Building, 14th and Independence Avenue, SW, Washington, DC 20250-9410 or call (202) 720-5964 (voice or TDD). USDA is an equal opportunity provider and employer.

Determination Map

Date: 5/22/2012

Field Office: WEST UNION SERVICE CENTER

Agency: USDA-NRCS

Assisted By: Carrie Davis

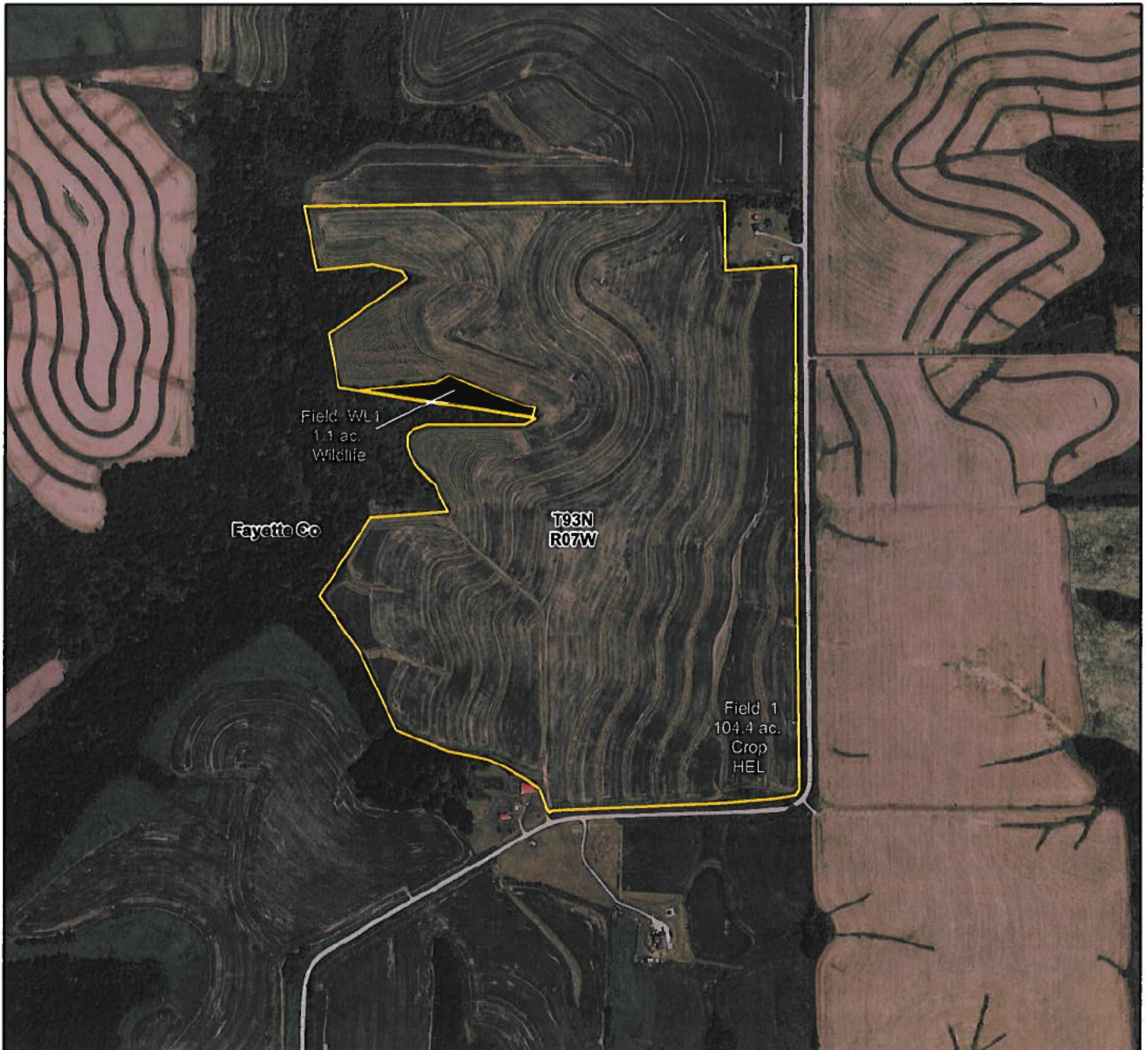
State and County: IA, FAYETTE

District: FAYETTE SOIL & WATER CONSERVATION DISTRICT

Legal Description: Illyria 11


T93N R7W

t7863



Legend

 Consplan

 Iowa - Counties

 Fayette Co - Townships



660 0 660 1,320 Feet



CONSERVATION PLAN



LAND UNITS		PLANNED			APPLIED		PLANNED CONSERVATION TREATMENT
TRACT	FIELD	AMOUNT	MONTH	YEAR	AMOUNT	DATE	
t2636	2, 3, 4	34.8ac					<p>CROP</p> <p>A CROP ROTATION of corn corn corn oat meadow meadow meadow will be used on these fields. Grass is planted with the meadow. CONTOUR FARMING will be used for all planting and tillage operations. The following CONSERVATION TILLAGE system will be used: Meadow is plowed with corn planted the following spring. Corn stalks are tilled leaving at least 30% of the ground covered by residue after planting corn and oats.</p>
t2636	2 HEL*	8.5ac	05	1990	8.5ac	01/23/1995	CONSERVATION CROP ROTATION
	3 HEL*	9.6ac	05	1990	9.6ac	01/23/1995	
	4 HEL*	16.7ac	05	1990	16.7ac	01/23/1995	
t2636	2 HEL*	8.5ac	05	1990	8.5ac	01/23/1995	CONSERVATION TILLAGE
	3 HEL*	9.6ac	05	1990	9.6ac	01/23/1995	
	4 HEL*	16.7ac	05	1990	16.7ac	01/23/1995	
t2636	2 HEL*	8.5ac	05	1984	8.5ac	01/23/1995	CONTOUR FARMING
	3 HEL*	9.6ac	05	1984	9.6ac	01/23/1995	
	4 HEL*	16.7ac	05	1984	16.7ac	01/23/1995	
t2636	2 HEL*	0.3ac	05	1983	0.3ac	01/23/1995	CRITICAL AREA PLANTING
	3 HEL*	0.2ac	05	1983	0.2ac	01/23/1995	
	4 HEL*	0.1ac	05	1983	0.1ac	01/23/1995	
t2636	12, 6a	77.3Ac					<p>crop</p> <p>A CROP ROTATION of continuous corn will be used on these fields. CONTOUR FARMING will be used for all planting and tillage operations. CONTOUR BUFFER STRIPS will be established and alternated with wider cultivated strips. A minimum of 30% of the slope will be in buffer strips. The following CONSERVATION TILLAGE system will be used: Corn stalks are tilled leaving at least 30% of the ground covered by residue after planting corn.</p>
t2636	12 HEL*	22.7ac	05	1997			CONSERVATION CROP ROTATION
	6a HEL*	54.6ac	05	1997			
t2636	12 HEL*	22.7ac	05	1997			CONSERVATION TILLAGE

HEL Fields marked as HEL are highly erodible fields.
 HEL* Reapplication of this conservation practice on this highly erodible field is required for compliance with the Food Security Act of 1985. See the Conservation Plan for details about first time application.

CONSERVATION PLAN

LAND UNITS			PLANNED			APPLIED		PLANNED CONSERVATION TREATMENT
TRACT	FIELD	AMOUNT	MONTH	YEAR	AMOUNT	DATE		
	6a HEL*	54.6ac	05	1997				
t2636	12 HEL*	22.7ac	05	1997			CONTOUR FARMING	
	6a HEL*	54.6ac	05	1997				
t2636	12 HEL*	0.5ac	05	1997			CRITICAL AREA PLANTING	
	6a HEL*	0.7ac	05	1997				
t2636	12 HEL*	3050.0ft	05	1997			FIELD BORDER	
	6a HEL*	850.0ft	05	1997				
t2636	12 HEL*	22.7ac	05	1997			STRIPCROPPING, CONTOUR	
	6a HEL*	54.6ac	05	1997				
t2636	12a, 12b, 12c, 12d, 12e, 12f, 6c, 6d, 6e	11.6ac 12.9 LGK					crop These contour buffer strips are established under the conservation reserve program. They cannot be grazed or harvested. They must be designed and maintained according to NRCS Specifications.	
t2636	12a HEL*	0.9ac	06	1997			Operation & Maintenance	
	12b HEL*	0.9ac	06	1997			* In order to establish permanent cover, the nurse crop is to be mowed or clipped. The FSA County Committee grants such approval when the CRP Contract is approved. *After permanent cover has been established (final NRCS status review completed), spot spraying, mowing, or burning needed to control noxious weeds and/or to maintain the approved cover shall be completed prior to May 15th or after August 1. The FSA County Committee must approve this spot spraying, mowing, or burning in advance. * See job sheets _____ for specific practice maintenance. * The turning on or crossing of waterways, contour buffer strips, or riparian filter strips necessary to complete planting, cultivating, and harvesting of crops on adjacent fields is allowed. However, these areas will never be used as travel lanes or roads.	
	12c HEL*	1.1ac	06	1997				
	12d HEL*	1.7ac	06	1997				
	12e HEL*	0.7ac	06	1997				
	12f HEL*	0.7ac	06	1997				
	6c HEL*	1.7ac	06	1997				
	6d HEL*	3.1ac	06	1997				
	6e HEL*	0.8ac	06	1997				
t2636	12a HEL*	0.9ac	06	1997			STRIPCROPPING, CONTOUR	
	12b HEL*	0.9ac	06	1997			Growing crops in a systematic arrangement of strips or bands on the contour to reduce water erosion. The crops are	
	12c HEL*	1.1ac	06	1997				

HEL Fields marked as HEL are highly erodible fields.
 HEL* Reapplication of this conservation practice on this highly erodible field is required for compliance with the Food Security Act of 1985. See the Conservation Plan for details about first time application.

CONSERVATION PLAN



LAND UNITS		PLANNED			APPLIED		PLANNED CONSERVATION TREATMENT
TRACT	FIELD	AMOUNT	MONTH	YEAR	AMOUNT	DATE	
	12d	HEL*	1.7ac	06	1997		arranged so that a strip of grass or close-growing crop is alternated with a strip of clean-tilled crop or fallow or a strip of grass is alternated with a close-growing crop. To reduce erosion and control water.
	12e	HEL*	0.7ac	06	1997		
	12f	HEL*	0.7ac	06	1997		
	6c	HEL*	1.7ac	06	1997		
	6d	HEL*	3.1ac	06	1997		
	6e	HEL*	0.8ac	06	1997		
t2636	12a	HEL*	0.9ac	06	1997		USE EXCLUSION
	12b	HEL*	0.9ac	06	1997		All contracted acres must be excluded from domestic livestock grazing for duration of contract.
	12c	HEL*	1.1ac	06	1997		
	12d	HEL*	1.7ac	06	1997		
	12e	HEL*	0.7ac	06	1997		
	12f	HEL*	0.7ac	06	1997		
	6c	HEL*	1.7ac	06	1997		
	6d	HEL*	3.1ac	06	1997		
	6e	HEL*	0.8ac	06	1997		
t2636	12a	HEL*	0.9ac	06	1997		WILDLIFE UPLAND HABITAT MANAGEMENT
	12b	HEL*	0.9ac	06	1997		Creating, maintaining, or enhancing areas, including wetland, for food and cover for upland wildlife. To create, maintain, or enhance habitat suitable for sustaining desired kinds of upland wildlife.
	12c	HEL*	1.1ac	06	1997		
	12d	HEL*	1.7ac	06	1997		
	12e	HEL*	0.7ac	06	1997		
	12f	HEL*	0.7ac	06	1997		
	6c	HEL*	1.7ac	06	1997		
	6d	HEL*	3.1ac	06	1997		
	6e	HEL*	0.8ac	06	1997		

HEL Fields marked as HEL are highly erodible fields.

HEL* Reapplication of this conservation practice on this highly erodible field is required for compliance with the Food Security Act of 1985. See the Conservation Plan for details about first time application.

CONSERVATION PLAN APPROVAL



Tract	ACRES	LAND UNIT NAME	OWNER NAME
t2636	319.0		LOHMAN, ERLING
TOTAL	319.0 ACRES		

CERTIFICATION OF COMPLIANCE WITH THE FOOD SECURITY ACT, 1985

I (We) concur in the conservation practices and installation schedules indicated in this conservation plan for all fields labeled HEL*. I (We) understand that, when this conservation plan for HEL fields is applied to the land and maintained on a continuing basis, the conservation system will meet all of the Food Security Act of 1985 requirements for conservation compliance. Furthermore, I (we) understand that if any fields other than those HEL fields specified in this plan will be used for the production of agricultural commodities, I (we) will contact ASCS and SCS for an HEL determination.

Cooperator (Producer)  Date 12-29-97

The above Conservation Plan meets the requirements of the Field Office Technical Guide.

District Conservationist *Charles Nuff* 1-15-98 Date

Approved by Conservation District *W. S. Bennett* Date 9-1-98

HEL Fields marked as HEL are highly erodible fields.
HEL* Reapplication of this conservation practice on this highly erodible field is required for compliance with the Food Security Act of 1985. See the Conservation Plan for details about first time application.

