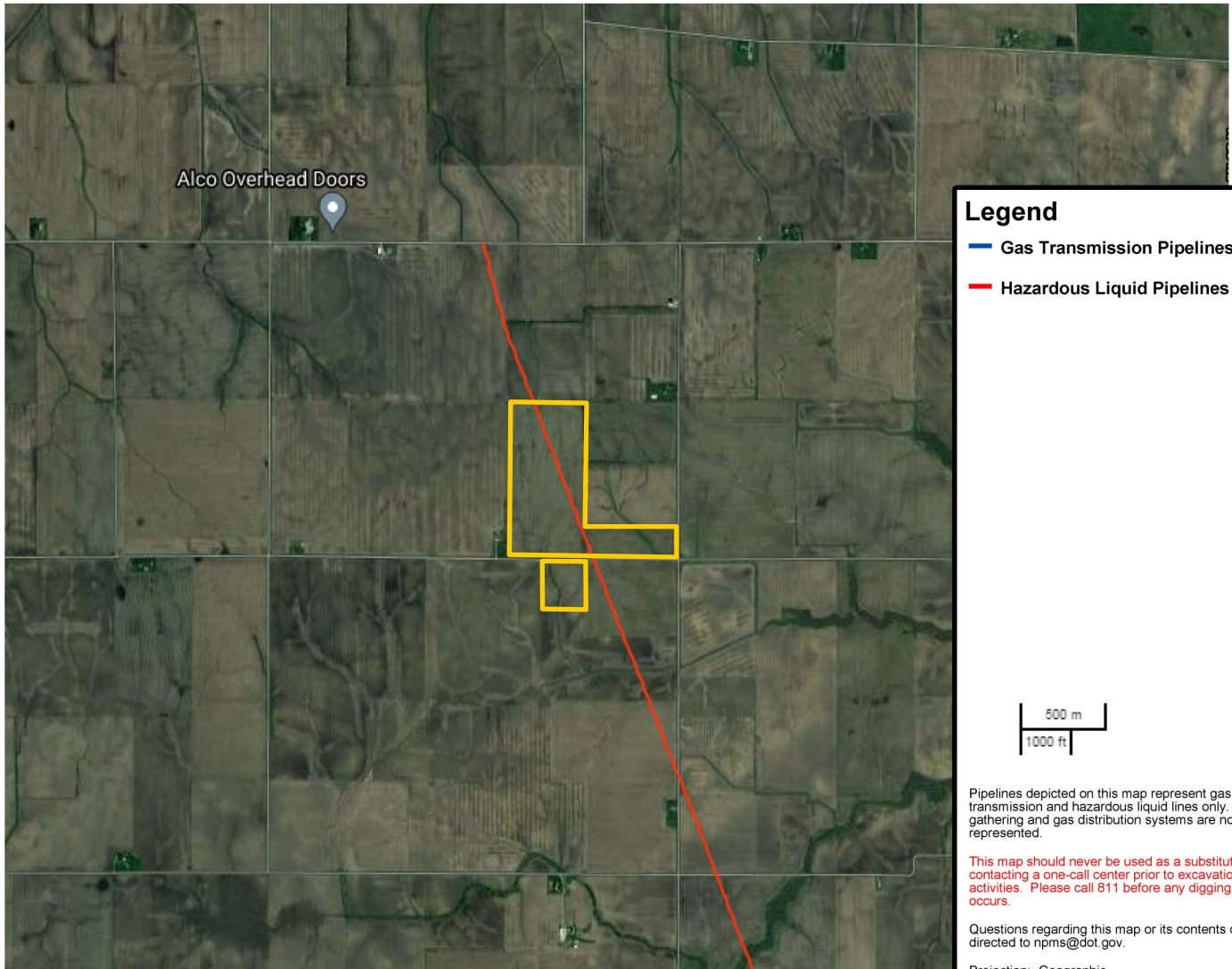


Pipeline and Hazardous
Materials Safety Administration

NATIONAL PIPELINE MAPPING SYSTEM



Legend

- Gas Transmission Pipelines
- Hazardous Liquid Pipelines



Pipelines depicted on this map represent gas transmission and hazardous liquid lines only. Gas gathering and gas distribution systems are not represented.

This map should never be used as a substitute for contacting a one-call center prior to excavation activities. Please call 811 before any digging occurs.

Questions regarding this map or its contents can be directed to npms@dot.gov.

Projection: Geographic

Datum: NAD83

Map produced by the Public Viewer application at www.npms.phmsa.dot.gov

Date Printed: Nov 03, 2021



Melissa Halpin
Licensed Broker in IL & IN
815-614-5533
MelissaH@Hertz.ag

815-935-9878
200 E. Court St., Suite 600
Kankakee, IL 60901
www.Hertz.ag

Eric Wilkinson, AFM
Designated Managing Broker in IL
815-671-4175
EricW@Hertz.ag