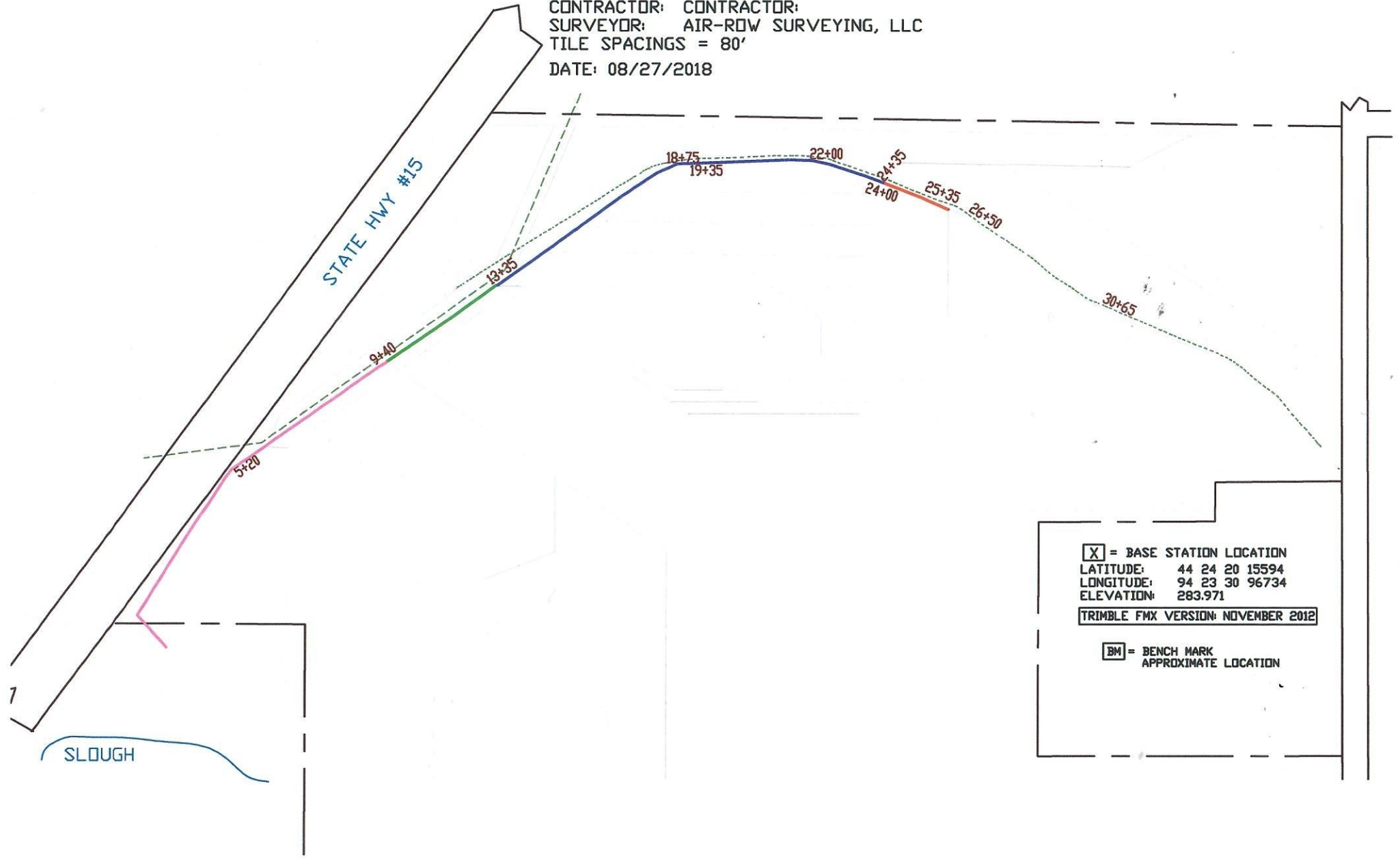


OWNER: GLEN SWANSON  
LOCATION: SE4  
SECTION: 23  
TOWNSHIP: LAFAYETTE  
COUNTY: NICOLLET  
CONTRACTOR: CONTRACTOR:  
SURVEYOR: AIR-ROW SURVEYING, LLC  
TILE SPACINGS = 80'  
DATE: 08/27/2018



[X] = BASE STATION LOCATION  
LATITUDE: 44 24 20 15594  
LONGITUDE: 94 23 30 96734  
ELEVATION: 283.971  
TRIMBLE FMX VERSION: NOVEMBER 2012  
[BM] = BENCH MARK  
APPROXIMATE LOCATION

SLOUGH

STATE HWY #15

DATE: 8/28/2018  
 NAME: GLEN SWANSON  
 ADDRESS: LAFAYETTE TWP NICOLLET COUNTY

Air-Row  
 Surveying LLC  
 Mankato, MN

LINE DESCRIPTION: MAIN # 1-2018 NE  
 LINE DESCRIPTION: OFF OPEN DITCH / POND

**AVERAGE CUT: 6.73**

Distance Station	Ground Hub	Offset Hub Elev	Flow Line Bottom	Offset Cut	Difference Cut	Percent Grade %	Notes
3+00	70.88	70.17	62.30	7.87	8.58	0.12%	15" DUAL WALL --
4+00	71.28		62.42		8.86	0.12%	
5+00	72.06		62.54		9.52	0.12%	
5+20	71.99		62.56		9.43	0.12%	SLIGHT PI RT NE
6+00	71.93	72.34	62.66	9.68	9.27	0.12%	
7+00	71.92		62.78		9.14	0.12%	
8+00	72.07		62.90		9.17	0.12%	
9+00	71.94	72.02	63.02	9.00	8.92	0.12%	
9+40	71.86		63.07		8.79	0.15%	12" DUAL WALL --
10+00	71.57		63.16		8.41	0.15%	
11+00	71.51		63.31		8.20	0.15%	
12+00	71.61	71.45	63.46	7.99	8.15	0.15%	
13+00	71.49		63.61		7.88	0.15%	
13+35	71.57		63.66		7.91	0.12%	10" DUAL WALL --
14+00	71.67		63.74		7.93	0.12%	
15+00	71.32	71.90	63.86	8.04	7.46	0.12%	
16+00	71.03		63.98		7.05	0.12%	
17+00	70.79		64.10		6.69	0.12%	
18+00	70.36	70.70	64.22	6.48	6.14	0.12%	
18+75	70.00		64.31		5.69	0.12%	PI RT E
19+00	70.01		64.34		5.67	0.12%	
19+35	69.92		64.38		5.54	0.15%	10" CORR --
20+00	70.03		64.48		5.55	0.15%	
21+00	70.25	70.46	64.63	5.83	5.62	0.15%	
22+00	70.20		64.78		5.42	0.15%	SLIGHT PI LT ExSE
23+00	70.18		64.93		5.25	0.15%	
24+00	70.32	70.37	65.08	5.29	5.24	0.15%	
24+35	70.37		65.13		5.24	0.15%	8" CORR --
25+00	70.34		65.23		5.11	0.15%	
25+35	70.33		65.28		5.05	0.15%	
26+00	70.32		65.38		4.94	0.10%	6" CORR --
26+50	70.27		65.43		4.84	0.10%	SLIGHT PI RT SE
27+00	70.06	70.31	65.48	4.83	4.58	0.10%	
28+00	70.01		65.58		4.43	0.10%	
29+00	70.28		65.68		4.60	0.10%	
30+00	70.32		65.78		4.54	0.10%	
30+65	70.08	70.18	65.84	4.34	4.24		TEMPORARY END



MICHAEL LEHMANN • 19184 STATE HWY 22  
 MANKATO, MINNESOTA 56001  
[design@air-rowsurveying.com](mailto:design@air-rowsurveying.com)  
[www.air-rowsurveying.com](http://www.air-rowsurveying.com)  
 CELL: 507-381-9791  
 HOME OFFICE: 507-278-4643

