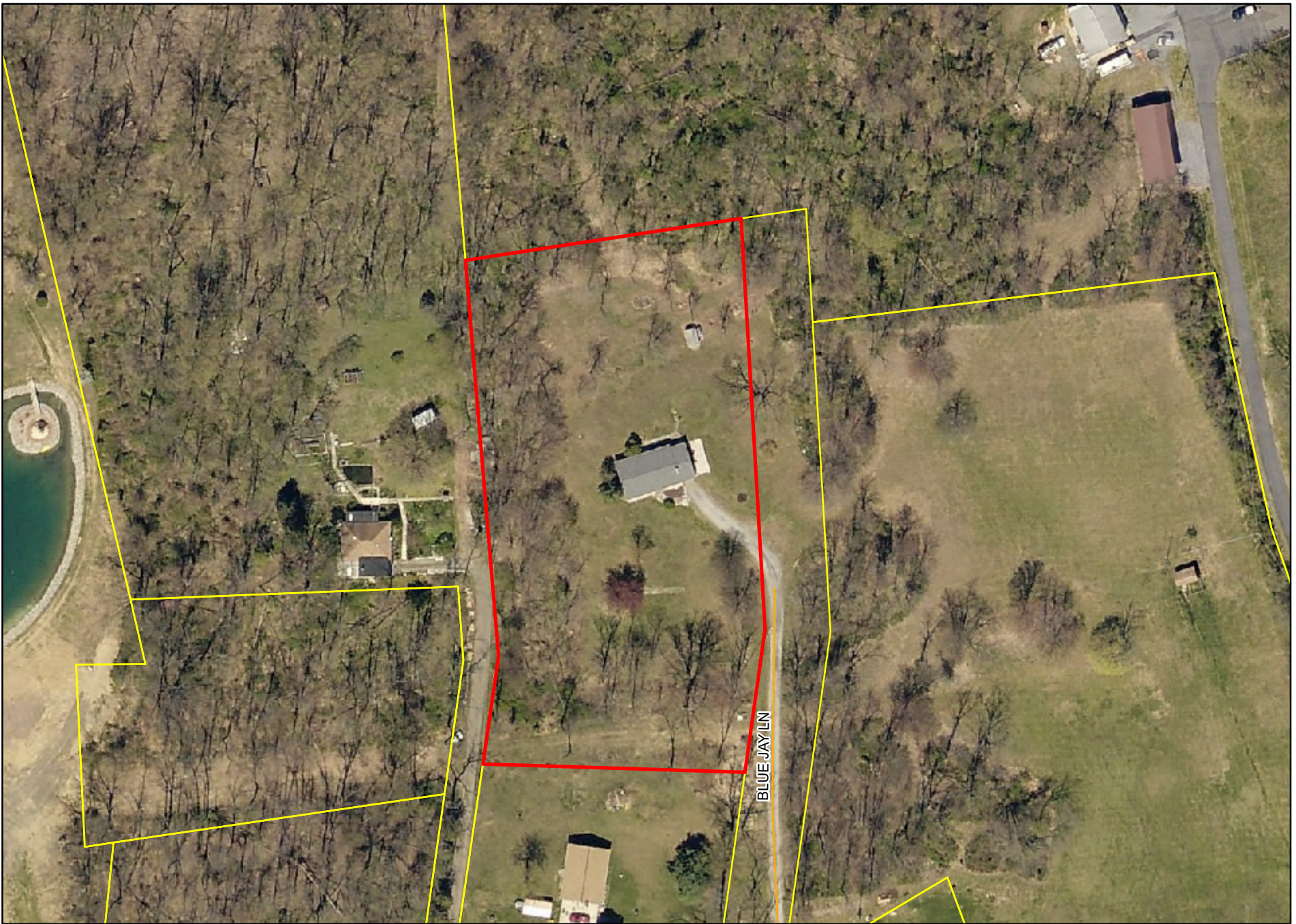
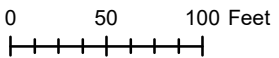


Lebanon County Tax Assessment Office



- Tax Parcels
- Roads
- Tract
- Buildings
- Subdivision Lot
- Buildings Under Construction
- Municipal Boundary
- County Boundary

1 inch = 100 feet



Tax Maps Compiled from 1997 Aerial Photography
 Map Projection - PA State Plane Coordinate System
 South Zone, NAD83, Coordinates in Feet



Disclaimer:
 Tax maps show the approximate boundaries of taxable and non-taxable property. The property boundaries depicted should not be interpreted as the legal boundary description. The legal boundary description can be obtained from the property's deed.

