



Thomas R. Gibbons & Associates, Inc.

Professional Surveyors, Engineers & Planners

The Firehouse  
200 Penn Street-Suite 200, Phone (610) 374-1551  
Reading, PA 19602 Fax (610) 374-3006

To HORST CONTRACTING

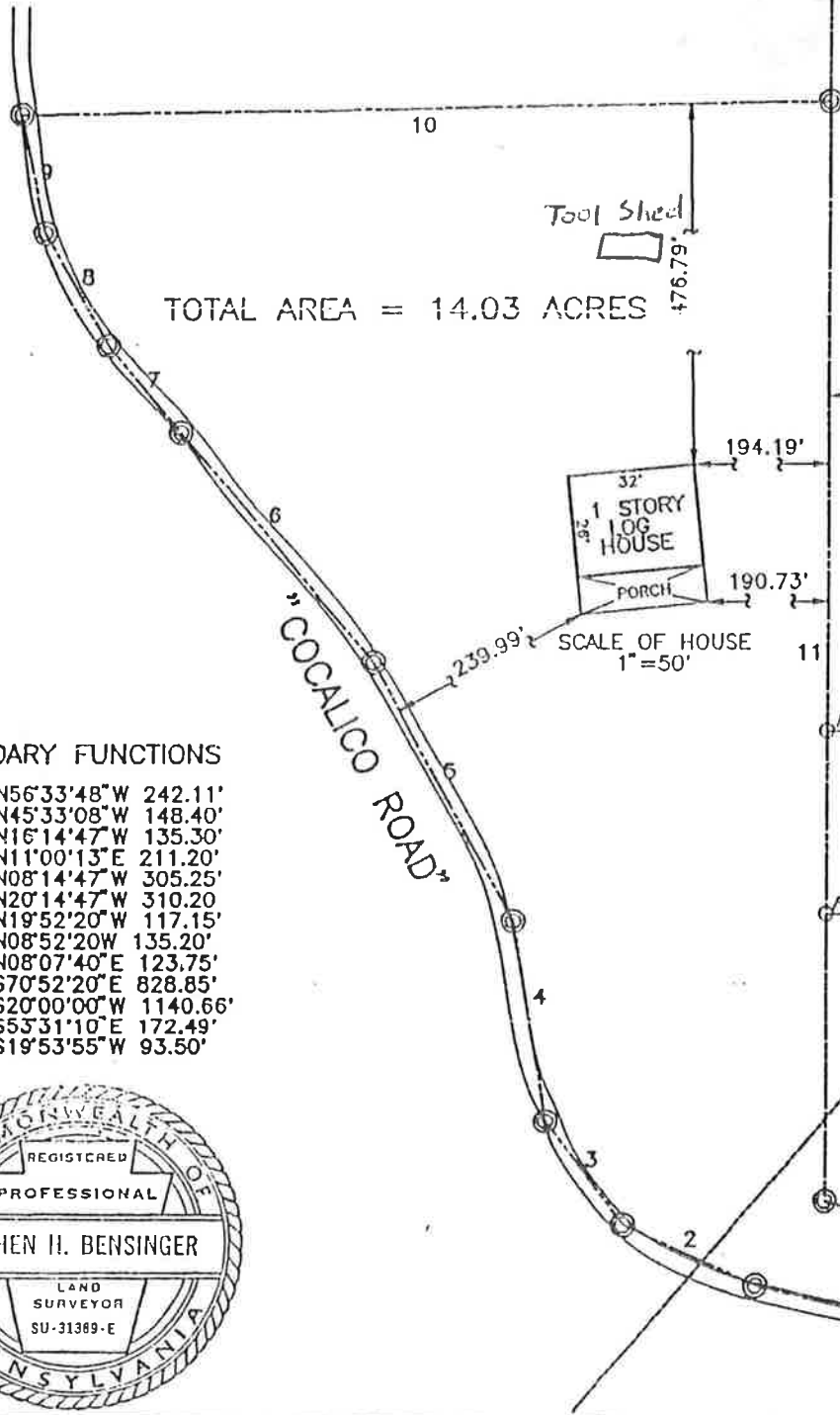
Order No.  
TRG-97-604

Date  
DECEMBER 4, 1997

Project  
SPOT SURVEY

Location  
WEST COCALICO TOWNSHIP, LANCASTER COUNTY, PA  
AND  
MILLCREEK TOWNSHIP, LEBANON COUNTY, PA

Present at Site	Scale	Sheet
SLS / JLE	AS NOTED	1 OF 1

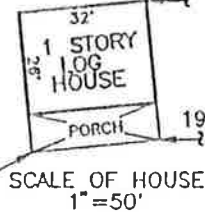


NOTES

SEE SURVEY PLAN OF PROPERTY OF CLIFTON & LOIS KLINEFELTER PREPARED BY FUEHRER ASSOCIATES DATED SEPTEMBER 30, 1998 LAST REVISED JUNE 30, 1992.

SCALES HAVE BEEN DISTORTED TO SHOW PERTINENT INFORMATION

SCALE OF BOUNDARY LINE  
1" = 200'



BOUNDARY FUNCTIONS

1	N56°33'48"W	242.11'
2	N45°33'08"W	148.40'
3	N16°14'47"W	135.30'
4	N11°00'13"E	211.20'
5	N08°14'47"W	305.25'
6	N20°14'47"W	310.20'
7	N19°52'20"W	117.15'
8	N08°52'20"W	135.20'
9	N08°07'40"E	123.75'
10	S70°52'20"E	828.85'
11	S20°00'00"W	1140.66'
12	S53°31'10"E	172.49'
13	S19°53'55"W	93.50'



FIELD REPORT

Copies to \_\_\_\_\_

Signed \_\_\_\_\_