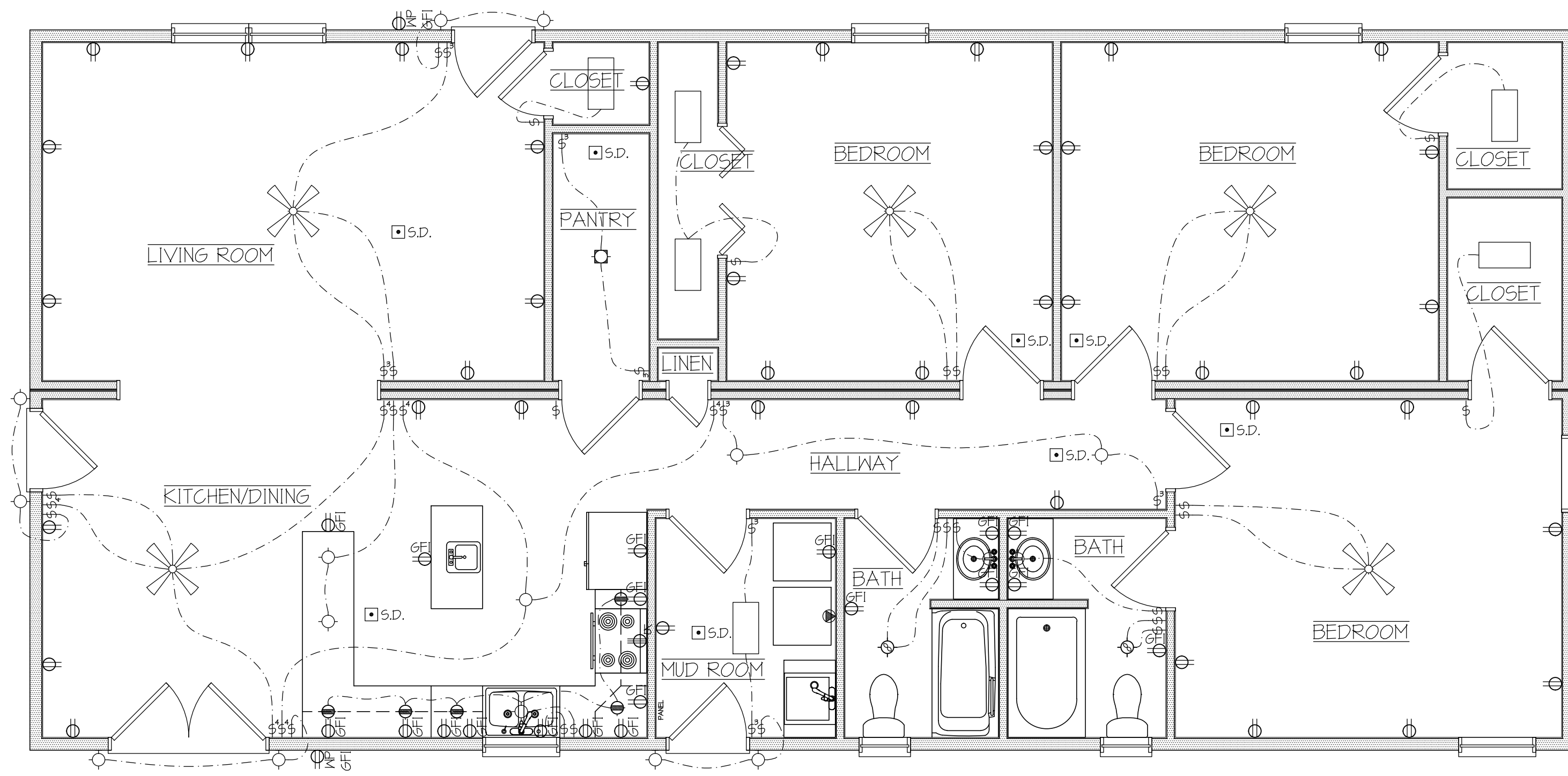


Lineage Architects P.C. hereby expressly reserves its common law copyright and other property rights in these plans. These plans and drawings are not to be reproduced, changed or copied in any form or manner whatsoever without first obtaining the express written permission of Lineage Architects P.C. nor are they to be assigned to any third party without first obtaining written permission and consent.



ELECTRICAL PLAN

SCALE: 1/4" = 1'-0"

1
E1.1

ELECTRICAL LEGEND	
SYMBOL	DESCRIPTION
	DUPLEX RECEPTACLE
	QUADRAPLEX RECEPTACLE
	SPECIAL PURPOSE RECEPTACLE
	DATA COMMUNICATIONS OUTLET
	TELEPHONE OUTLET
	SINGLE FLOOR RECEPTACLE
	DUPLEX FLOOR RECEPTACLE
	RANGE OUTLET
	220 VOLT OUTLET
	TELEVISION ANTENNA / CABLE OUTLET
	SWITCH
	DIMMER SWITCH
	3-SPEED FAN CONTROL SWITCH
	SWITCH AND SINGLE RECEPTACLE
	SWITCH AND DUPLEX RECEPTACLE
	EXIT LIGHT
	RECESSED LIGHT WITH EXHAUST FAN
	RECESSED CEILING FAN - EXHAUST
	CEILING MOUNTED LIGHT FIXTURE
	WALL BRACKET MOUNTED LIGHT FIXTURE
	UNDER CABINET MOUNTED LIGHT FIXTURE
	CEILING MOUNTED HEATING ELEMENT FIXTURE
	RECESSED CEILING LIGHT FIXTURE FOR WET AREA
	RECESSED CEILING LIGHT FIXTURE
	EXTERIOR FLOOD LIGHT (MOTION ACTIVATED)
	SMOKE DETECTOR (HARD WIRED)
	CEILING MOUNTED FAN W/ LIGHTS
	CEILING MOUNTED FLUORESCENT FIXTURE

ELECTRICAL NOTES:

MOUNT RECEPTACLES AND SWITCHES AT STANDARD HEIGHT UNLESS INDICATED OTHERWISE.

- (*) REPRESENTS TYPE OF RECEPTACLE OR SWITCH.
- GFI - GROUND FAULT INTERRUPT
- WP - WEATHER PROOF
- NONE - SINGLE POLE
- 3 - 3 WAY
- 4 - 4 WAY

DRILLING FOR ELECTRICAL WIRING IN A BEARING WALL IS NOT TO EXCEED 1 1/4" IN 2" x 6" STUDS AND 3/4" IN 2" x 4" STUDS. HOLES MUST BE A MINIMUM OF 5/8" FROM THE EDGE.

ELECTRICAL CONTRACTOR SHALL COORDINATE LOCATION OF PANEL AND METER WITH CONTRACTOR AND ELECTRIC COMPANY.



FIRM INFO:

Lineage Architects, P.C.
P.O. Box 991
610 Lee Highway, Suite 201
Verona, VA 24482
Phone: (540) 248-3771
Fax: (540) 248-1628
Email: info@lineagearch.com

ENGINEER NAME/SEAL:

ARCHITECT NAME/SEAL:

PROJECT TITLE:
**MODEL HOUSE
PLAN 4**

CLIENT'S INFO:
**VALLEY CAREER AND TECHNICAL
CENTER**
FISHERSVILLE, VIRGINIA

NO.	REVISION/ISSUE	DATE

JOB NUMBER: 16050

DATE: 04 AUGUST 2016

DRAWN BY: AMJ, dsc

APPROVED BY: PZG

DRAWING DESCRIPTION:

ELECTRICAL PLAN

DRAWING NUMBER:

E1.1