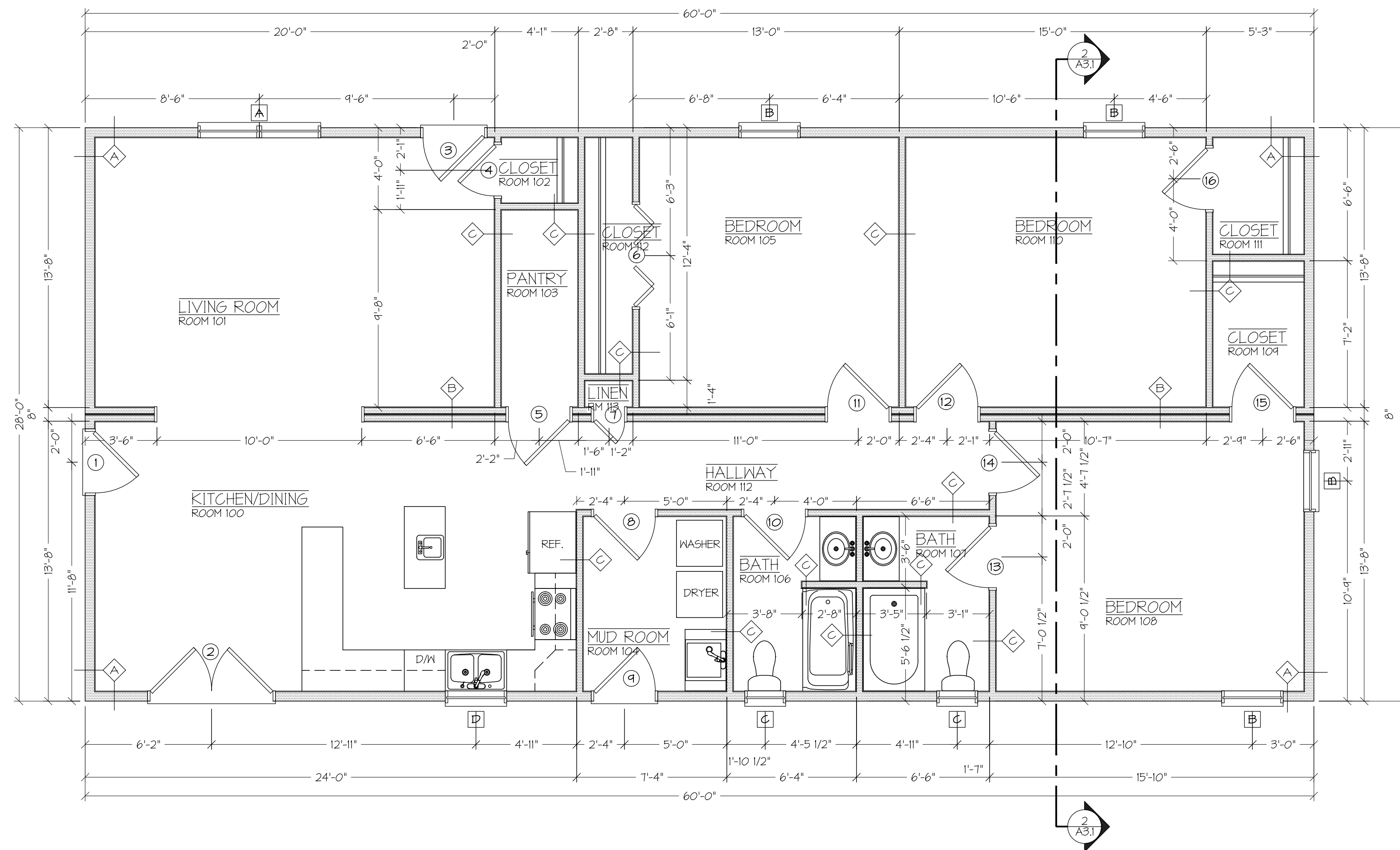
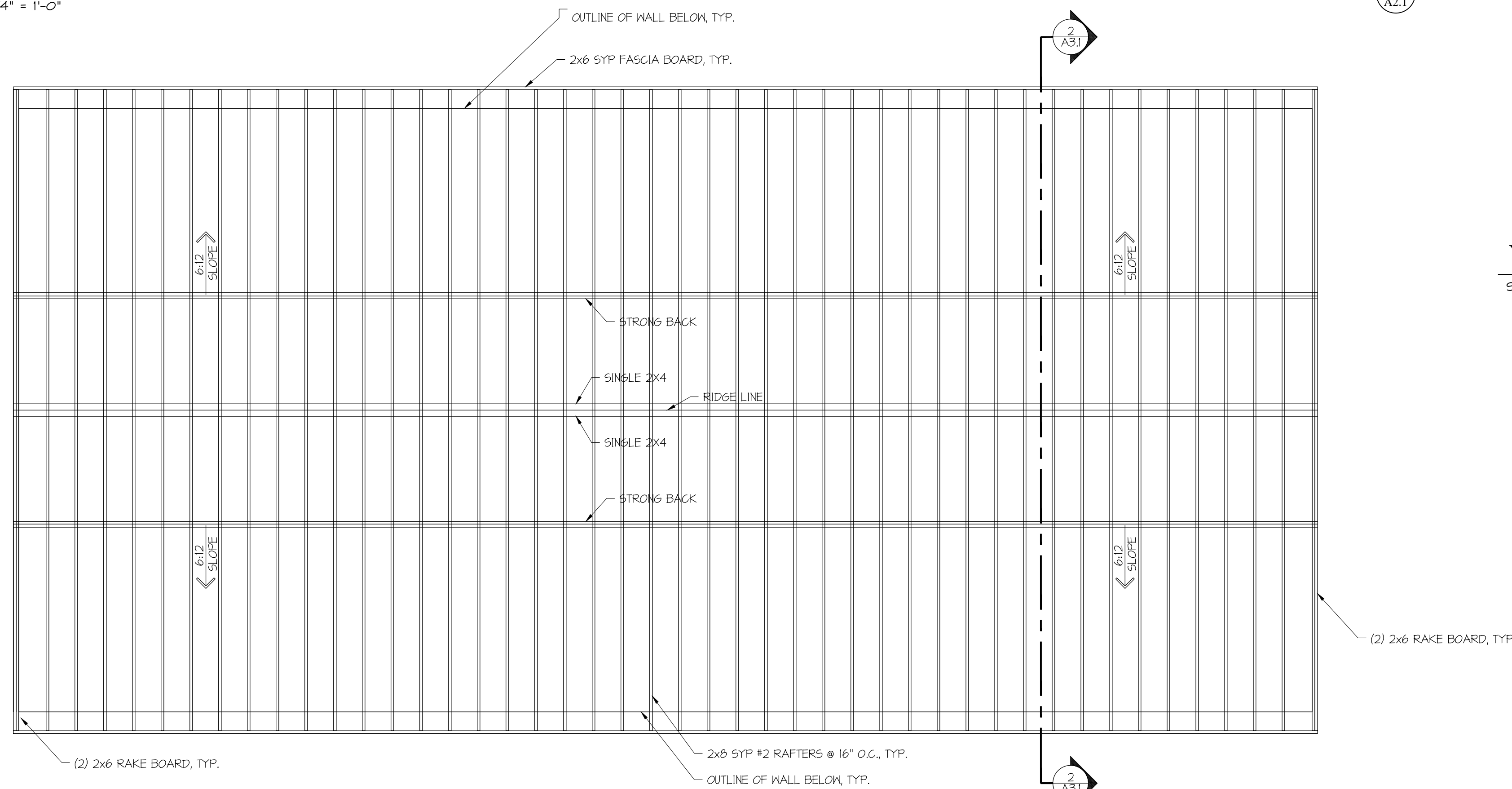


Lineage Architects P.C. hereby expressly reserves its common law copyright and other property rights in these plans. These plans and drawings are not to be reproduced, changed or copied in any form or manner whatsoever without first obtaining the express written permission of Lineage Architects P.C. nor are they to be assigned to any third party without first obtaining written permission and consent.



FIRST FLOOR PLAN

SCALE: 1/4" = 1'-0"

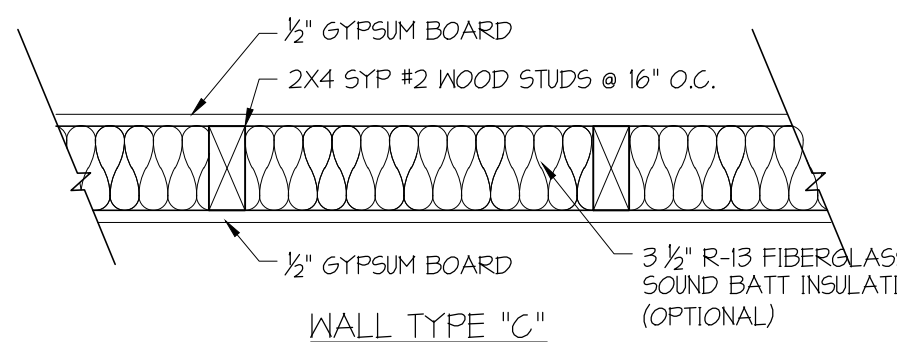
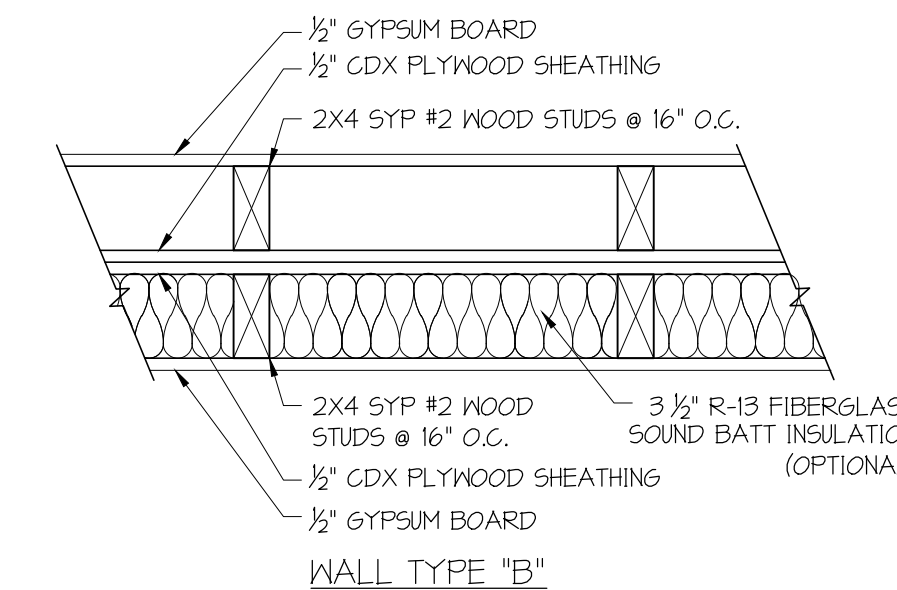
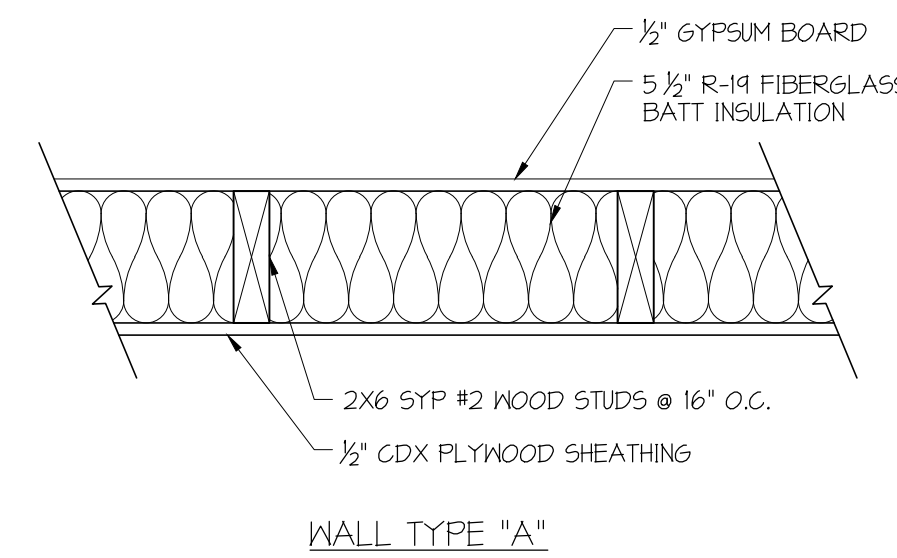


ROOF FRAMING PLAN

SCALE: 1/4" = 1'-0"

FLOOR PLAN NOTES

- 1 DO NOT SCALE DRAWINGS. ALL WRITTEN DIMENSIONS HEREIN SHALL BE FIELD VERIFIED BY GENERAL CONTRACTOR, AND THE ARCHITECT SHALL BE NOTIFIED OF ANY VARIATIONS OR DISCREPANCIES IN THE CONSTRUCTION DOCUMENTS.
- 2 ALL DIMENSIONS ARE TO FACE OF STUD, NOT FACE OF GYPSUM BOARD OR OTHER WALL COVERINGS.
- 3 REFER TO WALL TYPE LEGEND FOR WALL CONSTRUCTION INFORMATION. WALL TYPE LEGEND IS LOCATED 3/A2.1
- 4 REFER TO TITLE SHEET T1.1 FOR INFORMATION ON DRAWING SYMBOLS, ABBREVIATIONS AND HATCH PATTERN LEGEND.
- 5 PROVIDE STANDARD BLOCKING IN BATHROOMS FOR TOWEL BARS, TOWEL RINGS, ETC. PROVIDE BLOCKING AT ALL WINDOWS FOR STANDARD CURTAIN CONFIGURATIONS.
- 6 PROVIDE STANDARD BLOCKING AT ALL CASEWORK LOCATIONS AS SHOWN ON PLANS.



WALL TYPES

SCALE: 1 1/2" = 1'-0"

ROOF FRAMING NOTES

- 1 ROOF FRAMING SHALL CONSIST OF CONVENTIONAL RAFTERS AS SHOWN.
- 2 USE SIMPSON STRONG TIE MODEL HI HURRICANE TIE AT EVERY TRUSS. REFER TO TYPICAL BUILDING SECTIONS FOR MORE DETAIL.
- 3 ALL METAL CONNECTORS TO BE MANUFACTURED BY SIMPSON STRONG TIE COMPANY UNLESS OTHERWISE NOTED.
- 4 WALL STUDS AT BEARING WALLS SHALL BE CAPPED WITH A DOUBLE TOP PLATE INSTALLED TO PROVIDE OVERLAPPING AT CORNERS AND INTERSECTIONS WITH BEARING PARTITIONS. END JOINTS IN TOP PLATES SHALL BE OFFSET AT LEAST 48 INCHES.
- 5 PROVIDE OWENS CORNING "WEATHERLOCK" OR EQUAL WATERPROOFING MEMBRANE AT ROOF RIDGES, VALLEYS, EAVES, RAKES, ROOF TO WALL CONNECTIONS, AND ANY ROOF PENETRATIONS FROM VENTS, FLUES AND OTHER COMPONENTS.
- 6 COMBINE AND GROUP PLUMBING VENTS WHENEVER POSSIBLE TO MINIMIZE ROOF PENETRATIONS.



FIRM INFO:

Lineage Architects, P.C.
 P.O. Box 991
 610 Lee Highway, Suite 201
 Verona, VA 24482
 Phone: (540) 248-3771
 Fax: (540) 248-1628
 Email: info@lineagearch.com

ENGINEER NAME/SEAL:

ARCHITECT NAME/SEAL:

PROJECT TITLE:
MODEL HOUSE
PLAN 4

CLIENTS INFO:
VALLEY CAREER AND TECHNICAL
CENTER
 FISHERSVILLE, VIRGINIA

NO.	REVISION/ISSUE	DATE

JOB NUMBER: 16050

DATE: 04 AUGUST 2016

DRAWN BY: AMJ, dsc

APPROVED BY: PZG

DRAWING DESCRIPTION:
 FIRST FLOOR PLAN
 AND
 ROOF FRAMING PLAN

DRAWING NUMBER:

A2.1