

# FARM EQUIPMENT AUCTION

## *Eddie Brinson*

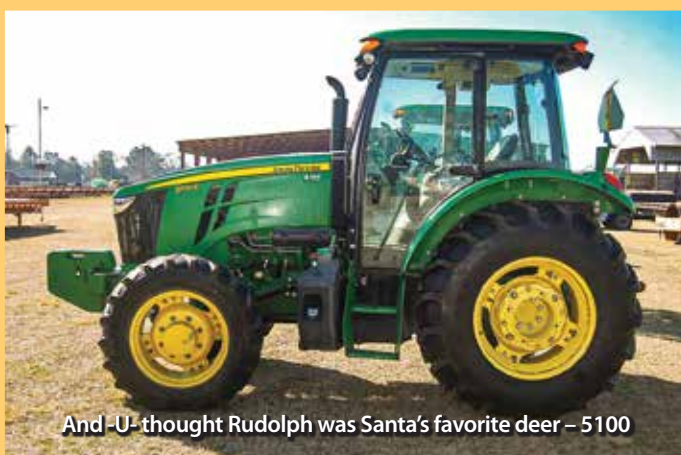
**Saturday 28th February, 2026 • 10:00 AM**  
**Beulaville, NC**

**DIRECTIONS:** I-40 travelers take Exit 373 (which is Hwy. 24), travel Hwy. 24 east for 16½ miles into Beulaville, @ 2nd stop light turn right onto Lyman Road, travel 3 ½ miles, sale on right. Also watch for signs on Hwy. 111 close to Onslow/Duplin County line.

**SALE SITE ADDRESS: 994 Lyman Rd. – Beulaville, NC**



Quick & agile as a buck deer – 325G



And – U – thought Rudolph was Santa's favorite deer – 5100



Best of both worlds & they will be side by side auction day – 5100's.



Experience the field benefits w/9760 STS.

### SALE HELD RAIN OR SHINE

E.B.Harris, 6:15AM–9:59PM ...office (252) 257-2140

E.B.Harris .....mobile (252) 430-9595

Fate .....mobile (252) 813-5852

Shane Harris.....mobile (919) 497-7990

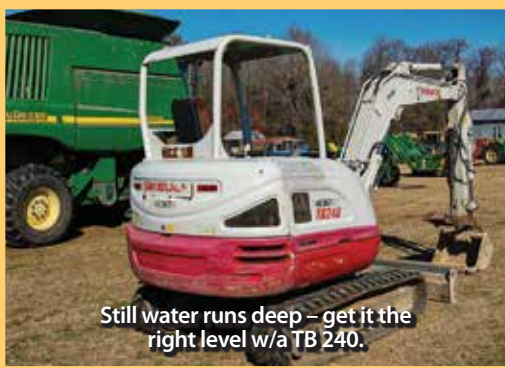


**3200 NC Hwy. 58**  
**Warrenton, NC 27589**

***"The Complete Auction Service"***

NCAL 1468  
NC#C 4264  
VAL 146  
SCAL 3895





Still water runs deep – get it the right level w/a TB 240.



Value in Value out w/a GST 1126 dryer.



Plant the corn close to the crib & turn around time will be a lot quicker.



When the tools are needed they will be might handy to reach here.



Genie 5519 – reach those jobs w/ greater height.

## TRACTORS, COMBINE, SKID STEER, TELEHANDLER, EXCAVATOR

**John Deere 5100E**, SN-1LV5100ECKK406958, 4x4, powered by 100 hp, 4-cyl. diesel, standard transmission w/left hand shift, forward & reverse, w/joy stick, ps, 540 shift-on-the-go pto, (3) sets dual remote hydraulic outlets, cab, 12.4-24 front tires, 18.4-30 rear tires, 3690 hrs., good rubber.

**John Deere 5100E**, SN-1LV5100EHGG40755, 4x4, powered by 100 hp, 4-cyl. diesel, standard transmission w/left hand shift, forward & reverse, w/joy stick, ps, 540 shift-on-the-go pto, (2) sets dual remote hydraulic outlets, cab, 12.4-24 front tires, 18.4-30 new rear tires, 5414 hrs., good rubber.

**John Deere 5075E**, SN-1PY5075PGG101565, 4x4, powered by 75 hp, 3-cyl. diesel, standard transmission w/left hand shift, forward & reverse, w/joy stick, ps, 540 shift-on-the-go pto, set dual remote hydraulic outlets, 2-post roll guard, 9.5-24 front tire, 16.9-28 rear tires, 3119 hrs., good rubber.

**John Deere 5075E**, SN-1PY5075ECHH102708, powered by 75 hp, 3-cyl. diesel, standard transmission, joy stick control, ps, differential lock, 540 shift-on-the-go pto, set dual remote hydraulic outlets, 2-post roll guard, 9.5-24 front tire, 16.9-28 rear tires, 3306 hrs., sells w/**JD H240 loader** & bucket

**John Deere 8870**, SN-112045, 4x4, cab, 32" duals front & rear, (3) sets duals, 8487 hrs.

**John Deere 9760 STS**, PIN-H09760S710837, 4x4, w/straw chopper, 42" duals front, 26" rear, 4197 machine hrs., 2775 threshing hrs., good rubber.

**John Deere 6020F** hydra-flex grain head, SN-H00620F705591.

**John Deere 8-row**, 30" corn head. Eddie said don't let the looks fool -U-, it's better than it looks.

**John Deere 325G** track skid steer, SN-1T0325GMLKJ354035, diesel, cab, w/

bucket, 761 hrs.

**Genie 5519 telehandler**, SN-141614, 4x4, 4-cyl. Deutz, cab (minus door @ this point), 1265 NHS tires, approx. 2000 hrs., sells w/5' loader forks w/skid steer adaptor plate.

**Takeuchi TB240** excavator, SN-45367, rubber tracks, hydraulic thumb, canopy, 23" bucket, 2017 hrs.

## TRUCKS & TRAILERS

1989 **IHS 2574**, 6x6, diesel, 8-speed w/low hold, 24.5 Spokes, live tandem, 16' contractor dump, 206" wheel base, swing out rear gate & swing around, pendulum hitch, rolling tarp.

2007 **KW T800** daycab, w/Cat C13, Eaton 10-speed, live tandem, dual stage wet line, 475K miles.

2012 **Toyota Tacoma Pro Runner SR5**, bonus cab, automatic, cross over tool box, 146K miles.

2017 **Toyota Tacoma**, bonus cab, automatic, cross bed tool box, 206K miles.

2006 **Ford F350** Power Stroke, diesel, w/ service body, 17" Budds, dual wheels, 264K miles.

2006 **Chevrolet 3500** w/service body, gas, 16" Budds.

1995 **Ford F150 XL** pickup, gas, 15" tires, 8' bed, 229K miles.

(2) 1996 **Nissan** king cab, 4-cyl. gas, manual transmission, 259K miles.

**Kaufman 42' lowboy**, 102x25 deck, 5' dove tail, 5 1/2' spring loading ramps, 12' deck over king pin, 215/75R 17.5 Budds, w/D rings.

1993 **Merritt 42'** aluminum hopper bottom, 9' high sides, tandem axle, 22.5 Budds, roll over tarp.

**Hudson 7-ton**, 18'x8' w/3 1/2' dove tail, 5 1/2' folding ramps, tandem axle, 16" tires, pendulum hitch.

2017 **Freedman 12'** single axle, cargo style enclosed trailer, fold down rear door, curb side door, 15" tires, 2" ball hitch.

1999 **Supreme 16' x 6'** gooseneck stock trailer, escape door, center divider, swing out rear w/1/2 slider, tandem axle, 15" tires, 2 5/16 ball hitch.



61', 10" & Eddie will put the pto drive on before sale day.



Hudson 7-ton has the right build to flex when needed.





It's more fun if the youngins ride the back seat.



Clip those pastures or shred those stalks—  
content cattle put on more weight.



When it's a humming, it's a Cat C13  
under the hood carrying the load.



The only difference in this unit & a new one is  
the paint- rebuilt by Brock Equipment.

**If-U-  
Want Help  
Look to  
the End  
of Your  
Arm**



**YOUR PERMANENT BUYER'S # IS HERE**

## **FIRST CLASS MAIL**

**TIME SENSITIVE MATERIAL - DELIVER ON TIME!!!  
IN HOME 2-13 / 2-16**

Permanent Buyer's Note: When you receive this brochure in the mail, your permanent # appears above your name. Bring this brochure with you to the sale & you never have to register. Check your name & address to make sure we have it correct. If there are any changes or if you are receiving more than one brochure, advise us of the changes that need to be made.

**PRESORTED  
FIRST-CLASS  
U.S. POSTAGE PAID  
ROCKY MOUNT, NC  
PERMIT NO. 98**

"THE COMPLETE AUCTION SERVICE"  
RETURN SERVICE REQUESTED

NCAL 1468  
3200 NC Hwy. 58  
Warrenton, NC 27589

*Inc. / Auctioneers*





EQUIPMENT

**John Deere 14'** 40-blade disc, 9" spacing, tandem wheels, trail-type, could use front blades.

**Athens Mdl. 62,** 10'; 26-blade disc, 9" spacing, trail-type.

**Athens Mdl. 55,** 9'; 24-blade disc, 9" spacing, 3-pt., like new.

**?Athens?** 10'; 26-blade disc, 9" spacing, tandem wheels, trail-type.

**Perfecta II,** 10' field cultivator, w/spikes & rolling basket, gauge wheels, 3-pt., like new.

**9-shank chisel** plow, w/gauge wheels, 3-pt.

**GSI 1126 LP** gas grain dryer, 3 ph.

**Hutchinson WR 100-61** grain auger, sells w/pto.

**Chandler 20'** litter spreader, 540 pto, tandem axle, hi flotation 16.1 tires, only used 4 seasons.

**16' litter spreader,** looks like Chandler, former truck mount converted to pull type.

**Agri-Craft** stainless steel fertilizer tender w/ Kohler gasoline engine, mounted on tandem axle carrier w/spare & canvass.

**John Deere 4-cyl.** engine w/Berkley pump, 6" inlet, 4" outlet, on trailer, recently rebuilt by Brock Equipment Co.

**John Deere M15** rotary cutter, hydraulic fold, w/stump jumper, chain guards, 540 pto.

**Case 602BD** smooth drum roller, pull type.

**ACS 8'** hyd. grapple Cat hook up.

**Hydraulic 76"** broom, skid steer mount.

**Rhino all** hyd. ditch bank cutter, 540 pto.

**New Holland 256** hay rake, trail-type.

**Lilliston 4-row** rolling cultivator.

**16' land** plane, 3-pt. (ideal for paths & fields)

**hay spear,** pallet forks.

**Generac XG 8000E** portable generator, roll around on wheels, electric start, like new.

**14.5 tires,** new, on rims.

**Enclosed trailer load** of tools & shop equipment coming from an estate

**'87 Timp**te hopper bottom w/new tarp.

**JD 6700** sprayer, 4-wheel, 60' booms, rate controller, w/shields.

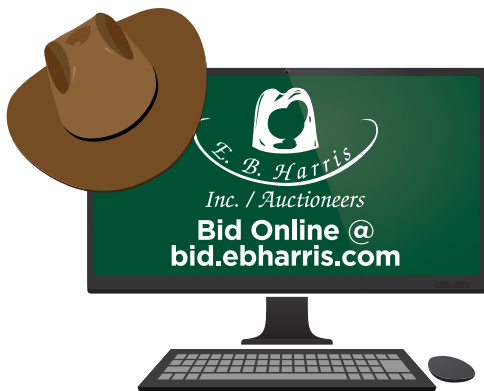
**IH 2-ton** truck w/22' bed.

**Box blade**

AUCTIONEER'S NOTE

Eddie is having a complete dispersal of his grain & row crop equipment to devote more time to his cattle & poultry operation.

For More Info call Eddie @ 910-298-1600.



Bid in person on site or online @bidebharris.com

Other absolute consignments accepted.

**Terms & Conditions:** All purchases must be paid for sale day. All property sells as is where is with all faults, with absolutely no warranties implied or expressed in any way. All Serial Numbers, mileage & hrs. unverified. All info printed in brochure is believed to be correct but not guaranteed. The auction company reserves the right to offer property in separate sales, combinations thereof or as a whole. Announcements made day of sale take precedence over printed material.

**SALES TAX INFO** We are now required to charge NC Sales Tax at our sales. If we do not have a completed sales tax exempt on file, you will be charged NC Sales Tax.



Some pickups get better fuel mileage.



Slip the apron strings & ride a Nissan.



Be a spring in your steps when -U- have a 42' lowboy to haul with.



This 5075E sells w/loader, the other will be a bare back.



Need a dump that can move stone or dirt w/ease = take a gander here.



If it dose not smell when -U- spread w/this 20' Chandler, something is wrong w/your nose.



(2) Service trucks – 1 is a Power Stroke diesel.