

Annual Warren County Cow Pasture Equipment Auction

BID IN PERSON OR ONLINE

NOTE
EARLY
START!!!

Saturday 4th May 2024 @ 9:00A.M. Warrenton, NC (Inez Community)

DIRECTIONS: From Warrenton, NC take Hwy 58 south 9 miles, sale on right. From Nashville, NC take Hwy 58 north 26 miles & watch for signs. If you are traveling Hwy 43 @ Grove Hill community watch for auction arrow pointing west. Coming from I-85 in Henderson, take Hwy 39 south thru Henderson, just past Bojangles @ fairgrounds turn left on Vicksboro Rd., go 12 miles to Hwy. 401, straight across on Lickskillet Rd. for approx. 12 miles to Pete Harris Rd., straight across, sale site 1 mile on right. Watch for signs along the way.

SALE SITE ADDRESS: 2254 Hwy. 58 - Warrenton, NC



A future in the making – JD 5075E with only 272 hrs.



Cat D5 – if in need of a dozer that last, here's your machine.



Cat 299C sell w/4-n-1 bucket & Hi-Flo will have capacity t operated a mulching head.



If -U- like your cattle standing @ the gate have a Kuhn tub grinder/mixer.



From cattle to chicken feed this Gehl will perform (& it may make some cooking kind).



This Chandler spreader is next to new (calves @ cow pasture are giving it a once over).

SALE HELD RAIN OR SHINE

E.B.Harris, 6:15AM–9:59PM ...office (252) 257-2140

E.B.Harrismobile (252) 430-9595

Office Fax(252) 257-1035

Fatemobile (252) 813-5852

Shane Harris.....mobile (919) 497-7990



Inc. / Auctioneers

Visit www.ebharris.com for updates.

3200 NC Hwy. 58
Warrenton, NC 27589

"The Complete Auction Service"

NCAL 1468

NC#C 4264

VAL 146

SCAL 3895



As far as I can remember, this will be the nicest Avery we have ever offered @ auction – Warren County Estate.



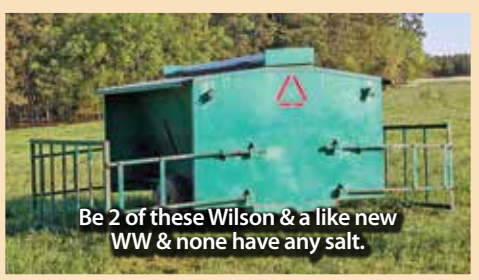
There will be an older brother 2040 to this 5200 on the auction sale.



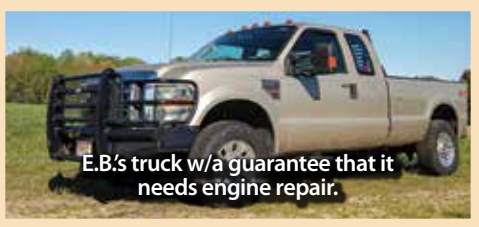
JD 4430 – powershift w/canopy – only limited edition – sells w/warranty.



If this does not put smiles on some faces somebody's clock may be broke – selling w/a warranty.



Be 2 of these Wilson & a like new WW & none have any salt.



E.B.'s truck w/a guarantee that it needs engine repair.

TRACTORS, BULLDOZER, SKIDSTEER, BACKHOE, COMBINE

John Deere 5075E MFWD, SN-1Y5075EPLK411528, powered by 75 hp diesel, standard transmission w/ FWD & reverse shuttle, set dual remote hydraulic outlets, cab, 250/85R-24 front tires, 16.9-28 rear tires, 272 hrs., like new condition, sells w/**JD 520** loader w/6' bucket w/3rd valve, joy stick loader control.

John Deere 2150, SN-L02150000536690, powered by 50 hp 3-cyl. diesel, standard transmission, differential lock, 540 shift-on-the-go pto, set dual remote hydraulic outlets, 7.50-16 front tires, 16.9-20 rear tires, 3003 hrs., sells w/JD 175 loader w/bucket, joy stick control.

John Deere 4430, SN-021042R, powered by 138 hp, 6-cyl. diesel, power shift transmission, 540 & 1000 shift-on-the-go pto, (2) sets dual remote hydraulic outlets, 4-post canopy w/canopy, single lift assist, 10:00-16 front tires, 18.4R38 rear tires, very good tractor, only limited amount of these made – power shift w/canopy.

John Deere 5603 MFWD, SN-V5603R269607, powered by 75 hp, diesel, standard transmission, w/power reverse, 540 & 1000 shift-on-the-go pto, (2) sets dual remote hydraulic outlets, cab, 24" front tires, 184-30 rear tires, 3034 hrs.

John Deere 5200, SN-C111610, powered by 45 hp 3-cyl. diesel, standard transmission, differential lock, ps, 540 shift-on-the-go pto, (2) sets dual remote hydraulic outlets, 2-post roll guard, 27-9;50-15 front tires, 14.9-24 rear tires, 4278 hrs.

John Deere 2040, SN-211453L, powered by 44 hp, 3-cyl. diesel, standard transmission, differential lock, ps, 540 shift-on-the-go pto, 6.00-16 front tires, 13.-28 spin out rear tires, 1808 hrs., one owner w/a one of a kind tool box.

BF Avery, restored/rebuilt in 2003, been stored inside, very good condition.

Cat D5 bulldozer, SN-96J3792, diesel, powershift transmission, 20" pads, 9 1/2' blade w/hyd. tile, rear draw bar hitch, 4-post canopy w/limb risers, good solid dozer.

John Deere 333D track skid steer, SN-TO33DK184975, cab, diesel, 2722 hrs., sells w/GP bucket, less than 200 hrs. on new set of tracks.

Cat 299C XPS High Flow skid steer, SN-KJSPO1168, cab, 3682 hrs. new tracks put on @3218 hrs., sells w/4-n-1 loader bucket, has enough hydraulic capacity to operate a mulching head.

John Deere 300 backhoe, 4-cyl. diesel, shuttle shift transmission, 80" front bucket, 24" digging bucket, 3071 hrs. showing, maybe one owner, came from estate Vance Co.

Ford 555A backhoe/front end loader, 4-post canopy, 3377hrs., SN-CB37764.

John Deere 9600 combine, 4x4, SN-641468.

John Deere 894, 8-row corn head, 38".

Unverferth HY25 header cart w/light package, nice.

TRUCKS & TRAILERS

2008 **Ford F350**, 4x4, extended cab, Powerstroke 6.4 diesel, automatic, 18" like new tires, Ranch Hand front & rear bumper & headache rack, 292,710 miles. E. B. bought new, needs engine work, think it has a busted piston, still runs, smokes like a train.

1997 **Ford F** series, diesel, automatic, air brakes, 11>R22.5 Budds, 15' twin cylinder dump, w/grain sides, rear grain gate w/(3) slide open chutes, 125,850 miles.

1988 **Ford 8000**, Cat 3208 diesel, 13-speed, air brakes, 11R22.5 Spokes, live tandem, 15' contractor's dump, Hendrickson suspension, 204" wheel base, 95,810 miles, in NC on the coldest days turns over 1 time to crank, only one in the county w/a wood dashboard, truck looks ragged, works good.

1973 **Ford F600**, 8-cyl. gas, 4-speed w/2-speed, west

coast mirrors, 8.25-20 Budds, Simpson 15' twin cylinder dump w/4' grain sides, 53,988 miles.

2004 **Travis** 39' x 96" aluminum frameless dump trailer, tandem axle, 60" sides, 24.5 aluminum Budds, air ride, 3-way tailgate, poly liner, roll over tarp, good trailer.

2016 **Timpte 43'**, 78" sides, hopper bottom, aluminum wheels, good brakes.

'07 **Utility** refer, 53 x 102, stainless steel swing out back doors, Thermo King cooling unit.

20' x 7.5', 6' 10" tall gooseneck stock trailer, tandem axle, gooseneck 2 5/16 ball hitch.

30' x 8' flatbed gooseneck trailer, 16" tires, tandem axle, 7 1/2' deck over neck, 2 5/16 ball hitch.

'07 **Wilkerson 53' x 102** walking floor, needs tarp.

53' x 102" equipment moving trailer, spread axle, w/ loading ramps, drive up area over 5th wheel, tool box between axles, like new

8' x 16' steel flatbed trailer, tandem axle, 4' wood sides, 14.5 tires, pin hitch.

6' x 10' steel flatbed single axle trailer, 1 7/8 hitch, 14.5 tires.

9' x 18' harvester/sprayer moving trailer, 3-axle, pin hitch, 14.5 tires, 4' ramps, heavy duty.

TILLAGE & PLANTING EQUIPMENT

Case 3950 disc w/leveling drag.

IH 470, 13 1/2', 36-blade disc, 9" spacing, dual wheels, trail-type.

Johnson Level Cut high speed, 13 1/2', 36-blade disc, 9" spacing, heavy duty, trail-type.

6' disc, 3-pt.

John Deere 4600, 5-bottom flip plow, 3-pt.

Ford 3-bottom plow, 3-pt.

Massey Ferguson 2-bottom plow.

Ferguson 2-disc plow, 3-pt.

(2) **KMC 4-row rolling cultivators** w/First Products hoppers w/drive wheel, (1) 4x7 bar, (1) 4x4 diamond bar.

Lilliston 4-row rolling cultivator w/First Products.

2-row middle buster, mounted on 4x7 bar.

1-row spring shank cultivator, 3-pt.

KMC 8-row hydraulic fold bedder, floating parallel linkage, adjustable gauge wheels, set on 36", 3-pt.

5-shank V ripper, adjustable gauge wheels, 3-pt.

John Deere 7300 & 1720, 8-row vertical fold planters, (1) 36", (1) 42".

John Deere 8300, 12' grain drill, double disc, w/new hyd. hoses.

John Deere 750, 10' no-till drill w/small seed attachment, w/dolly, pull type, building kept.

Agco/White 12-row vacuum no-till planter, set on 23" rows, 3-pt.

APPLICATORS, TOBACCO & IRRIGATION EQUIPMENT

Agri-Craft approx. 7-ton fertilizer tender w/Kohler 8.5 hp engine.

Chandler 16' litter spreader w/new canvass, extra close spreader bars on chain, dual spinners, mounted on '93 IH w/DT 466 diesel, automatic, air brakes, 11R22.5 Budds, 152,250 miles, runs & operates great, used weekly.

Chandler 14' litter spreader, dual spinners, 540 pto, 12.52-15" flotation tires, shed kept.

Chandler 10' spreader, dual hyd. driven sinner, tire engaged & driven, 15 1/2" stainless steel chain, tandem axle, like new, may have had 3 loads spread in it, SN-15269.

Newton Crouch approx. 5-ton fertilizer/lime spreader, single axle, dual spinner, 16" chain, pull type

6000 gal. aluminum storage tank, good

1550 gal. stainless steel nurse tank on steel frame w/ fork pockets, nice.

Granville tobacco green leaf loading system.

Amadas Mdl. M9D reel on single axle carrier w/Nelson

big gun, w/Honda rewind engine.

(3) **Long irrigation** reels, 3 1/2 & 4" hard hose, w/big guns, on single axle carrier

Approx. **10,000' Webster pipe**, 4 & 5"

(40) **80B sprinklers**.

Granville box stander.

(2) **Irrigation pipe trailers**, nice.

Greenhouse plant hauling trailer.

Mechanical 1-row setters, individual units.

LIVESTOCK EQUIPMENT

Kuhn 5127 tub grinder/mixer/feeder, right hand side discharge w/chain conveyor, w/top retention ring.

Knight 3025 Reel Auggie mixer/feeder.

Gehl 125 Mix All grinder/mixer w/scales, 540 pto, mill unloading auger, always shelter kept

New Holland 355 feed mill w/mill unloading auger, 540 pto, appears to be good, always shed kept.

New Holland 311 square hay baler, 540 pto, twine tie, shed kept, very good.

Vermeer R2300 hydraulic driven hay rake, pull type.

Kuhn SR108 hay rake.

(2) **New Holland 256** hay rake, pull type.

8-wheel V rake, pull type.

New Holland 472 mower conditioner, 540 pto, 7' cut.

New Holland 478 mower conditioner, 540 pto, 7' cut.

Kuhn FA4, 3-wheel bale accumulator, like new, pull type.

ForMost 750 hyd, cattle working chute w/electric power pac, breast bar, neck sweep, aluminum diamond floor, preg check cage, always barn kept.

Arrowquip quick catch cattle working chute, w/alley way & crowding tub, portable, like new.

WW sweep tub.

(10) **WW panels**, 10 & 12'.

Approx. **28' hay/silage** feeding trailer, front dolly, shed kept, excellent condition.

WW approx. 150 bu. creep feeder, used 1 time, pull type, like new

(2) **Wilson** approx. 150 bu. creep feeders, single axle w/gates, (never had any salt).

6x16 steel cattle crossing – made out of I beam.

(4) **8' concrete** U cattle feed bunks.

Worksaver bale squeeze, JD global style hookup.

River Road 10' bow gate, (2) top bars need repair.

Bale forks, 3-pt.

(2) **Tru/Test HD Series** heavy duty load bars, heavy enough to go under working chute if -U- would like, they work.

Grain cart, 3-ton, mounted on trailer, electric brakes, working lights, new tires & wheels, side roll tarp.

Cattle automatic headgate, mounts on post.

Shaver HD 8 hydraulic post driver, 3-pt. & front mount.

Cedar post, T post, steel T post, barb wire & hi-tensile wire.

Cattle corral panels & livestock gates

Poly 10' feed troughs.

EQUIPMENT

2023 **John Deere XUV835R** gator, 4x4, cab w/heat & air, electric dump, front brush guard, 1200 miles, 230 hrs., one owner, nice.

EZ-Go golf cart, electric, runs good.

Bush Hog MBX 96 box blade w/teeth, 3-pt., like new.

John Deere 9' hyd. heavy duty blade, 3-pt.

Rhino 6' heavy duty road blade, 3-pt.

(2) **5' road blades**, 3-pt.

Land Pride 6' rotary cutter, 540 pto, 3-pt.

King Kutter 5' rotary cutter, 540 pto, 3-pt.

8 1/2' rotary cutter, 540 pto, heavy duty gear box, pull type.

Bush Hog hydraulic front end loader, fits JD 2955, 2 or 4 wheel.

Bush Hog bale spear, fits above front-end loader.

Edge 6 1/2' pulverizer, hydraulic driven, skid steer mount.

6 1/2' landscape pulverizer, 3-pt.

8' culti-packer, flips over for transport, pull type, built by Thurman Paynter – Afton, NC.

12' pea weeder.

(2) **20' shipping containers**, real nice.

75K generator w/Thompson transfer switch, 4-cyl. Cummins diesel, very low hrs., works, always building kept.

John Deere X300 riding lawn mower.

2023 **Ford Super Duty** front & rear bumper (new).

John Deere suitcase weights, (4) thick, (6) thin.

IH suitcase weights w/logo.

Ford & Farmall M rear wheel weights

Cat II & III quick hitches.

20' boom pole, 3-pt.

Sheppard hyd. pac 220 w/electric motor.

(2) **500 gal.** fuel tanks, (1) battery operated, (1) electric pump, like new.

KMC 4x7x18' tool bar, 3-pt.

5 x7x20 hydraulic fold tool bar, 3-pt.

(10) stacks of (10) pieces **36" x27'** metal sheeting, good.

(3) **LP gas forklifts**

LUMBER

Inventory of Pine, cedar, walnut, oak lumber

Cedar porch swing, swing w/legs, glider, picnic tables, benches.

AUCTIONEER'S NOTE

This is just a small sample of what will be @ this sale. Check website for updates. **Remember** - If you are interested in a particular item, always call & make sure it did arrive at sale site!! Some items may not make it to sale site. Carefully read the note below regarding when equipment will be received at sale site. **Call office for commission rates before bringing equipment – this could save you time & make you \$\$\$\$.** Check web often week of sale for updated equipment & photos.

Read Carefully!!! Equipment will be received @ sale site week of sale Monday, 29th April - Wednesday 1st May 9:00 AM – 5:00 PM & Thursday, 2nd May 9:00 AM – 12:00 NOON. Bring extra set of keys for vehicles. **Items taken on these days only!! Friday will be for getting items in sale order & Saturday will be for selling only!!** Kids need to be under adult supervision at all times.

Selling Schedule: Note the early start - **9:00 AM**. As usual bring a buddy as 2 sales will be running simultaneously – one from each side of the truck. This year we will have an implement row to be sold at the same time tractor row sells. We are planning to have 2 sales from start to finish & maybe 3 sales part of the time.

Bring trucks & trailers – we will have (6) loaders & operators working sale day. We will be glad to assist you on sale day getting loaded.



Bid online @ bid.ebharris.com or onsite in person. All items will not be on internet. Internet bidding starts @ approx. 11:00 am – check website for update.



NH 311 – one owner – never been wet & we will keep it covered @ the cow pasture, excellent baler.



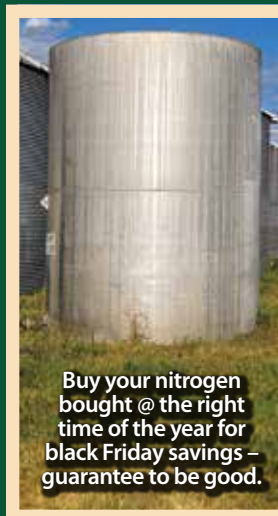
If your budget for a backhoe won't let -U- buy new, take a look @ this JD & Ford here also.



Longer, lighter & haul more w/a Travis aluminum dump – has a warranty also.



Once -U- have operated a Vermeer hay rake U'll ask the ? why didn't I do this sooner.



Buy your nitrogen bought @ the right time of the year for black Friday savings – guarantee to be good.

TERMS & CONDITIONS:

All purchases must be paid for sale day. All property sells as is where is with all faults, with absolutely no warranties implied or expressed in any way. All Serial Numbers, mileage & hrs. unverified. All info printed in brochure is believed to be correct but not guaranteed. The auction company reserves the right to offer property in separate sales, combinations thereof or as a whole. Announcements made sale day take precedence over printed matter.



When it goes across the ground it sounds like real work hoss - JD 333D



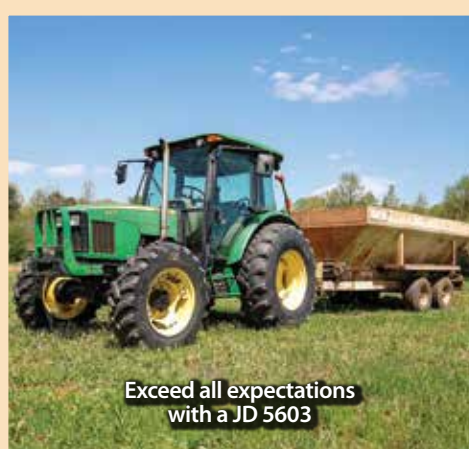
-U- can take a lot of by products & make a delicious recipe for cattle feed that will put ##'s on



The story starts to change w/a 2150 & loader.



Diesel, auto, Ford & a dump the right equipment makes all the difference.



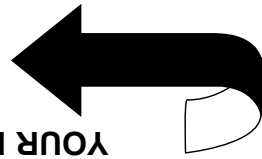
Exceed all expectations with a JD 5603



Make the grass grow, cows milk, & calves put on #'s. There will also be a pull type.



RETURN SERVICE REQUESTED
 "THE COMPLETE AUCTION SERVICE"
 NCAL 1468
 Warrenton, NC 27589
 3200 NC Hwy. 58



YOUR PERMANENT BUYER'S # IS HERE

FIRST CLASS MAIL

**TIME SENSITIVE MATERIAL - DELIVER ON TIME!!
 IN HOME 4/22 - 4/24**

Permanent Buyer's Note: When you receive this brochure, advise us of the changes that need to be made. any changes or if you are receiving more than one address to make sure we have it correct. If there are & you never have to register. Check your name & your name. Bring this brochure with you to the sale chure in the mail, your permanent # appears above

**PRESORTED
 FIRST-CLASS
 U.S. POSTAGE PAID
 ROCKY MOUNT, NC
 PERMIT NO. 98**