

FARM EQUIPMENT AUCTION

• **GREG HIPP** •

Saturday, 16th March, 2024 • 10:00 AM

FUQUAY VARINA, NC

DIRECTIONS: Being on Hwy. 42 west of Fuquay Varina, turn south on Barefoot Rd., go ¼ mile, will turn into Christian Light Rd., go approx. 5 miles, right on Smith Prince Rd., sale will be in 1st field on left. Watch auction signs. Just punch into you GPS – Plenty of parking if dry in field behind equipment. We are on a no outlet road.

SALE LOCATION: 30 PINEAPPLE LANE – FUQUAY VARINA, NC



-U- are looking @ total of 18-rows when these (3) 6-row Amadas are putting goobers in the basket.



8295R – equal in the field to any brand.



4 of these peanut drying trailers doing their part to keeping peanut butter on the shelf.



U'll ride a long time to find a 4450 w/ 3154 original hrs. that's for sale.

SALE HELD RAIN OR SHINE

E.B.Harris, 6:15AM–9:59PM ...office (252) 257-2140

E.B.Harrismobile (252) 430-9595

Office Fax(252) 257-1035

Fatemobile (252) 813-5852

Shane Harris.....mobile (919) 497-7990



Inc. / Auctioneers

Visit www.ebharris.com for updates.

**3200 NC Hwy. 58
Warrenton, NC 27589**

"The Complete Auction Service"

NCAL 1468

NC#C 4264

VAL 146

SCAL 3895



If -U- are not sure just take a look @ this 4455 & remove all doubt.



Strength beneath the surface 4960.



No need to sweat Jack Frost a coming w/ (34) box barns.



There's a generation among us that can talk old times w/a late model 3020.



Will be (2) of these Case IH 340 - 22 1/2' & 27 1/2'.

TRACTORS, FORKLIFT

John Deere 8295R, SN-EAP012053, powered by 295 hp 6-cyl. diesel, power shift transmission, differential lock, ps, 1000 shift-on-the-go pto, (5) sets dual remote hydraulic outlets, cab, 420/85R34 front tires, 480/80R50 dual rear tires, active seat, 1500 front axle, 3784 hrs.

John Deere 4960, SN-P003640, powered by 222 hp 6-cyl. diesel, power shift transmission, differential lock, ps, 1000 shift-on-the-go pto, (3) sets dual remote hydraulic outlets, cab, 16.SL - 16.1 SL front tires, 20.8R42 rear tires., 6094 hrs.

John Deere 4320, SN-024366R, powered by 127 hp 6-cyl. diesel, synchro range transmission, differential lock, ps, 540 & 1000 shift-on-the-go pto, (2) sets dual remote hydraulic outlets, 2-post roll guard w/canopy, 11:00-16 SL front tires, 18.4-38 rear tires, ??199?? hrs.

John Deere 4455, SN-PO12469-6321, powered by 173 hp 6-cyl. diesel, power shift transmission, differential lock, ps, 540 & 1000 shift-on-the-go pto, dual remote hydraulic outlets, cab, 14L-16.1 SL front tires, 18.4R42 rear tires, single lift assist.

John Deere 4450, SN-PO18598, powered by 158 hp 6-cyl. diesel, power shift transmission, differential lock, ps, 540 & 1000 shift-on-the-go pto, (3) sets dual remote hydraulic outlets, cab, 14L-16.1 front tire, 18.4R42 rear tires, 3154 original hrs., single lift assist.

John Deere 3020, SN-156986R, powered by 77 hp 4-cyl. diesel, synchro range transmission, differential lock, ps, 540 & 1000 shift-on-the-go pto, set dual remote hydraulic outlets, 2-post roll guard w/canopy, 11L-15 front tires, 16.9-34 rear tires, side console, late model.

Harlo HP 6500 rough terrain forklift, 4x4, 4-cyl. diesel, 3-stage 46" forks, side shift, this is the same as a John Deere.

Case 1845 Uniloader skid steer w/bucket.
Set of forks to fit Case skid steer

TRUCKS, TRAILERS

1992 **Mack DM 6905**, 10-wheel flatbed, Mack 300 hp, 6-cyl. diesel, 8-speed transmission, air brakes, west coast mirrors, 22.5 Spokes, 20' steel flatbed, 119,360 miles, bulldog front to back.

(2) 1999 **Freightliner passenger bus**, diesel, automatic transmission, air brakes.

1990 **Stoughton 53' x 102"** semi-van trailer, tandem axle, 22.5 tires, swing out doors.

24' x 7 1/2' all steel flatbed, 3-axle, 14.5 tires, 5' metal head board, pin hitch.

20' x 8' steel flatbed, single axle, dual wheel, 22.5 tires, pin hitch.

PEANUT EQUIPMENT

Peanut equipment set on 36" rows.

Amadas 2110 6-row peanut combine, 1000 pto,

w/off loading conveying system, SN-510037.

(2) **Amadas 2100** 6-row peanut combines, 1000 pto, SN-430180, 430294. Some may be set on 750 rpm.

(2) **KMC** 6-row, 36" peanut diggers, hydraulic drive, 3-pt.

KMC 6-row peanut lifter, 3-pt., like new.

KMC 4825 dump cart, 23.1-26 tires, pin hitch.

(2) **Hyundia 45'** semi peanut trailers, all steel, 10:00-20 Spokes, have new brakes, will need roll over tarps.

(2) **45' semi** peanut trailers, 10:00-20 Spokes, roll over tarp (1) Pines.

Peerless semi-van dryer on roll around dolly.1 ph, LP gas.

1991 **Pine 53'** van trailer.

Amadas peanut combine parts - sprockets, bearings, belts, pulleys.

BULK BARNS & TOBACCO EQUIPMENT

All **tobacco equipment** set on 48" rows.

(34) **Long barns**, single phase, LP gas, (4) 10-box red trim w/Evans heat exchangers (3) DeCloet burner

(1) Long burner, (4) 8-box red trim - Long heat exchangers, (3) w/ Cureco controls, (26) 8-box blue trim - Long heat exchangers, (2)w/Cureco controls.

Berkely 5EERJD 6x6 irrigation pump, good, (goes on motor)

Plantek 8-row carousel setter mounted on KMC 7x7 stack fold tools bar, 3-pt.

Mechanical 4-row finger type setter, w/metal top, 3-pt.

16 x 8 4-tier plant trailer, tandem axle, 14.5 tires, curtain sides, pin hitch.

14 x 6 6-tier plant trailer, single axle, 14.5 tires, curtain top & sides, pin hitch.

1987 **Ford B700 bus** converted to drag belt to haul green tobacco, diesel, air brakes, automatic.

(2) **Granville** tobacco balers w/scales, (1) has hyd. power pac.

(3) **Reddick** ordering carts w/(3) hose reels.

(22) **Single axle box** trailers, pin hitch. 10'. 14.5"; 15" tires.

Powell 2-row tipping head.

30' **portable loading ramp**, 6" wide @ bottom, 8" wide @ top, w/single to axle to move around, well made.

TILLAGE & PLANTING EQUIPMENT

Case IH 340, 27', 76-blade disc, 7" spacing front, 9" spacing rear, tandem wheels, trail-type, new earth metal front blades.

Case IH 340, 22 1/2'; 60-blade disc, 9" spacing, new earth metal blades.

John Deere 215, 15'; 40-blade disc, 9" spacing, tandem wheels.



Take the guess work out of putting just the right amount of fertilizer down (2) sets of these First Products.



Transport the help during the summer (maybe some of the school systems will lease form -U- that can't get the students to school on time)

John Deere 425, approx. 12', 28-blade disc, 11½" spacing, trail-type, needs blades.- they only come for sale very seldom.

Sukup 9400 4-row hi-speed cultivator, set on 46", 3-pt.

(3) **KMC** 4-row rolling cultivators, set on 46", 3-pt., (1) set used 1 yr.

KMC 14' field cultivator, double rolling baskets, 3-pt.
KMC 6' field cultivator, 3-pt.

(2) **John Deere 1705** 6-row vacuum planters, 3 bu. hopper, no-till coulters, set on 36", 3-pt.

(1) has cotton closing wheels w/no till trash wheels, (1) has hydraulic fold row markers, very nice.

Unverferth 332, 6-row ripper stripper w/hydraulic fold row markers, auto reset shanks, set on 36", 3-pt.

Unverferth 432 6-row ripper/bedder w/dirt door, set on 36", auto reset shanks, 3-pt.

4-row row knocker on KMC tool bar w/200 gal. tank, 3-pt.

Other non-conflicting absolute consignments accepted.



Bid in person or online @ bid.ebharris.com

SPRAYERS & APPLICATORS

(2) **John Deere 6700 hi-cycles**, 420 gal. tank, 60' hyd. fold booms, SN-X016210 – 3353 hrs., auxiliary hydraulics, hydraulic tread adjustment, SN-X020118 – 2176 hrs., auxiliary hydraulics, hydraulic tread adjustment, set up for 8-row tobacco.

John Deere 6000 hi-cycle, SN-X021045, 5014 miles, set up for 4-row tobacco.

Adams 7-ton stainless steel fertilizer tender w/Honda GX630 engine.

Chandler approx. 5-ton hi-clearance spreader, 24" chain, dual spinners, pull type.

(2) **First Products** 4-row fertilizer applicator, ground driven, 3-pt., always building kept.

Coastal 400 gal. sprayer, 6' booms w/break away tips, pto pump, 3-pt., 1-year old, used 4 times.

Sheppard 3000 gal. black poly nurse tank w/inductor & Honda engine mounted on steel frame.

(2) **1200 gal.** stainless steel nurse tanks.

(2) **Sheppard 300 gal.** front mount tank.

EQUIPMENT

John Deere HX14 rotary cutter, 1000 pto, 3-pt.

(2) **Hardee 7'** rotary cutters, dual tailing wheels, 540 pto, 3-pt.

Scott Big 12 cotton module builder.

John Deere 20" front dual spacers.

John Deere 420/85R34 front duals Last on JD 8295R.

(8) **14.5 tires**, new, mounted on rims.

Cattle corral panels w/easy hook up Jimmy proof latch system.

Livestock gates, various lengths.

Poly 10' feed troughs on metal frames.

AUCTIONEER'S NOTE

Greg is having a complete dispersal of his peanut & tobacco equipment. A lot of this is due to housing development in his area as the people are coming out of the Raleigh area & are building homes on lots of farm land (second sale we have had this season for this reason). Greg & his family have taken a lot of pride in the equipment. Be Here Sale Day to take home equipment that will give many hours of service.

For More info call Greg 919-669-0057.

Inspection: Week of auction 8:00 am – 5:30 PM only or call Greg for an appointment.

Terms & Conditions: All purchases must be paid for sale day. All property sells as is where is with all faults, with absolutely no warranties implied or expressed in any way. All Serial Numbers, mileage & hrs. unverified. All info printed in brochure is believed to be correct but not guaranteed. The auction company reserves the right to offer property in separate sales, combinations thereof or as a whole. Announcements made day of sale take precedence over printed material.

Sales Tax Info – We are now required to charge NC Sales Tax at our sales. If you we do not have a completed sales tax exempt on file, you will be charged NC Sales Tax.



Aiming on a perfect stand – be (2) of these JD 1705 no-till, 36".



Take the ??? work out of loading w/a 4x4 a Harlo (it's also got JD printed on it – Shane calls them the same).



Straighten out the curve in the field w/a 6-row no-till ripper.



The difference is genuine w/6700 hi-cycle.



When 4320 came out lot of farmers said it was a 4020 on steroids.



Dig 'em up, reap the benefits w/(2) 6-row hyd. KMC diggers.



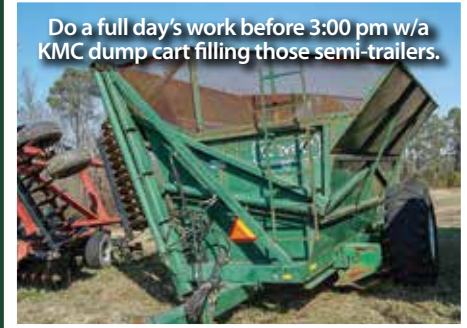
A good way to transport your valuables – Mack w/Adams fertilizer tender – be (2) sales



Drying time is on your side w/a Peerless crop dryer.



Want your crops to have explosive growth use a Chandler spreader.



Do a full day's work before 3:00 pm w/a KMC dump cart filling those semi-trailers.



JD 6000 – it will do the same jobs as a late model & the crop will still be the same.



A good man won't pick his job – he will do what's @ hand – give him a 6-row ripper bedder to work with.



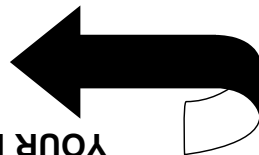
Sweep those middles w/6-row Sukup just in front of a rain storm.



“THE COMPLETE AUCTION SERVICE”
RETURN SERVICE REQUESTED

NCAL 1468
Warrenton, NC 27589
3200 NC Hwy. 58

Inc. / Auctioneers



FIRST CLASS MAIL

YOUR PERMANENT BUYER'S # IS HERE

**TIME SENSITIVE MATERIAL - DELIVER ON TIME!!
IN HOME 3-4/3-6**

Permanent Buyer's Note: When you receive this brochure in the mail, your permanent # appears above your name. Bring this brochure with you to the sale & you never have to register. Check your name & address to make sure we have it correct. If there are any changes or if you are receiving more than one brochure, advise us of the changes that need to be made.

**PRESORTED
FIRST-CLASS
U.S. POSTAGE PAID
ROCKY MOUNT, NC
PERMIT NO. 98**