

# FARM EQUIPMENT AUCTION

# Dan Taylor

**Saturday 2nd March, 2024 • 10:00 AM**  
**Seaboard, NC**

There is no shortcut when it comes to quality – 7210R



**DIRECTIONS:** Being on Hwy. 186 in Seaboard, take Hwy. 305 south (this will be Gay Implement) for .4 mile, left on Elm St./Devils Race Track Rd, travel 3.7 miles to stop sign, left on Mt. Carmel Rd., go .2 mile, right on Bynum Rd., go 1.4 miles, sale on right. Also being on Hwy.158, 7 miles east of Jackson & 5.4 miles west of Conway@ Faison's Tavern turn on Galatia Rd., travel 2.6 miles, turn left on Bynum Rd, go 2 miles, sale on left. Watch for signs.

**SALE ADDRESS:** Across from 1184 Bynum Rd.

## SALE HELD RAIN OR SHINE

E.B.Harris, 6:15AM–9:59PM ...office (252) 257-2140

E.B.Harris .....mobile (252) 430-9595

Office Fax .....(252) 257-1035

Fate .....mobile (252) 813-5852

Shane Harris.....mobile (919) 497-7990



*Inc. / Auctioneers*

Visit [www.ebharris.com](http://www.ebharris.com) for updates.

**3200 NC Hwy. 58**  
**Warrenton, NC 27589**

*"The Complete Auction Service"*

NCAL 1468

NC#C 4264

VAL 146

SCAL 3895



The difference between deer corn & hog corn depends on whether -U- are buying or selling—haul w/Ford w/60K miles.



Is there is an app for liquid hauling, these 3 should be the 1st to appear.



-U- can't use what -U- don't have - 7810 & KBH put them in them in what -U- have.



If -U- always wanted one here is your chance for a tender that's nice.



Jus in time.

## TRACTORS, COMBINE, COTTON EQUIPMENT

**John Deere 8300 MFWD**, SN-PO22572, powered by 222 hp 6-cyl. diesel, power shift transmission, 1000 shift-on-the-go pto (4) sets dual remote hydraulic outlets, 380/85R34 front tires, 18.4R46 rear tires, 8102 hrs., has steering valve & wiring to hookup Greenstar.

**John Deere 7210R MFWD**, SN-CH5092720, powered by 210 hp 6-cyl. diesel, E23 transmission, 540 & 1000 shift-on-the-go pto, (4) sets dual remote hydraulic outlets, 420/90R30 front tires, 18.4R46 rear tires, 1370 hrs.

**John Deere 6190R MFWD**, SN-CDA007100, powered 190 by hp 6-cyl. diesel, power quad plus w/left hand shuttle, 540 & 1000 shift-on-the-go pto, (4) sets dual remote hydraulic outlets, 420/85R34 front tires, 480/80R50 rear tires, 2536 hrs.

**John Deere 7810 MFWD**, SN-PO28246, powered by 175 hp 6-cyl. diesel, power shift transmission, 540 & 1000 shift-on-the-go pto, (3) sets dual remote hydraulic outlets, 380/85R30 front tires, 480/80R42 rear tires, 11,642 hrs.

**John Deere 7630 MFWD**, SN-R024339, powered by 175 hp 6-cyl. diesel, power quad w/left hand shuttle, 540 & 1000 shift-on-the-go pto, (4) sets dual remote hydraulic outlets, 420/90R30 front tires, 18.4R36 rear tire, 3820 hrs.

**John Deere 4250**, SN-PO15549, powered by 144 hp, 6-cyl. diesel, power shift transmission, differential lock, 540 & 1000 shift-on-the-go pto, (2) sets dual remote hydraulic outlets, 11:00-16 front tires, 18.4-38 rear tires, single lift assist, 14041 hrs., engine rebuilt @ 9900 hrs.

**John Deere 9670 STS** grain combine, 4x4, SN-S726620, 520/85R38 duals, 28L-26 rear tires, bin extension, 3260 engine hrs., 2271 separator hrs.

**John Deere 630F Hydra Flex** grain head, SN-VB0740656.

**John Deere 894**, 8-row corn head, set on 36", SN-X715692.

(2) **EZ Trail 689** header carts.

**John Deere 9996** 6-row cotton picker, 4x4, SN-X020271, 20.8-42 duals, 3272 engine hrs., 2260 fan hrs.

**John Deere 9965** 4-row cotton picker, mud hog, 18.4-38 duals, SN-X004453, 5160 engine hrs., 3 997 fan hrs.

**John Deere 9970**, 4-row cotton picker, mud hog, SN-X012080, 4249 engine hrs., 3206 fan hrs., knocking engine.

**KBH Mule Boy** boll buggy, tandem axle, pin hitch.

(2) **KBH modular** builder w/auto bridge, 1000 pto.

## TRUCKS, TRAILERS

2010 **Ford F350 Lariat**, 4x4, 4-door, 6.70 Powerstroke, auto, 18" tires, 324,538 miles.

2002 **Ford F350**, 4x4, Powerstroke 7.3 diesel, auto, 16" tires, w/CM 8' flatbed, recessed gooseneck ball hitch, 183,643 miles.

(2) 1997 **Ford F250**, 4x4, Powerstroke 7.3 diesel, auto, below eyeline mirrors, Brute rear bumper, 312,540 miles - 17" tires, 353962

miles - 16" tires.

1992 **Ford F900**, 10-wheel, 7.8L 6-cyl. diesel, 13-speed transmission, air brakes, west coast mirrors, 22.5 Budds, 22' twin cylinder dump, 4' sides, 242" wheel base, live tandem, 64,342 miles.

1986 **Ford F700**, 6.6L 6-cyl. diesel, 5-speed w/2-speed, west coast mirrors, 9:00-20 Spokes front, 10:00-20 Spokes rear, 16' twin cylinder dump, 4' sides, 189" wheel base, 60,462 miles.

1987 **Pontiac Bonneville**, not run in a while, may be running by sale day, this was Dan's mama's car.

2014 **Maxey 8 1/2' x 26'** gooseneck flatbed - 21' flat w/5' dovetail w/flip over ramps, dual tandem axle, 16" tires, 2 5/16 ball hitch.

**Topline 6 1/2' x 16'** flatbed, tandem axle, 15" tires, 2 5/16 ball hitch.

**6 1/2' x 10'** all steel flatbed, single axle, 15" tires, pin hitch.

## TILLAGE & PLANTING EQUIPMENT

**John Deere 637**, 24', 68-blade hydraulic fold disc, 9" spacing, tandem wheels, pull type.

**John Deere 630**, 24', 68-blade hydraulic fold disc, 9" spacing, tandem wheels, pull type.

**Long 12 1/2'** 40-blade disc, 7 1/2' spacing, 3-pt.

**KMC 8-row strip till**, hydraulic fold, shear bolt shanks w/(4) coulters & double rolling baskets, hydraulic fold row markers, set on 36", 3-pt.

**John Deere 3-shank ripper**, 3-pt.

**John Deere 12-shank chisel plow**, 26" clearance, 3-pt.

**Massey Ferguson 3-bottom flip plow**, 3-pt.

**Long 10'** field cultivator w/rolling baskets, 3-pt.

**John Deere 1725**, 12-row hydraulic stack fold planter, set on 36" rows, 3 bu. hoppers, no-till coulters, pneumatic down force 2x2 & in furrow w/John Blue dual piston pump, hydraulic fold row markers, cable drive, 3-pt.

**Speed King 160 bu. seed tender** w/Honda engine, on tandem axle carrier, 16" tires, pin hitch.

**KMC 8-row hydraulic stack fold row incorporator**, adjustable gauge wheels, set on 36", 3-pt.

**John Deere 12'** double rolling pecker, 3-pt.

(2) **John Deere 8-row Danish tine hydraulic fold cultivators**, 3-pt. (1) has had row units taken off toolbar.

(2) **EZ Trail** carts, 1000 pto, roll over tarp, pin hitch, (1) 860, (1) 510

## SPRAYERS & APPLICATORS

**John Deere R4023 sprayer**, SN-CJ0180153, 600 gal. poly tank, 80' booms, triple nozzle bodies, stainless steel inductor, 380/80R38 tires, w/crop shields, 2007 hrs.

**Agri-Craft FL6** hi clearance spreader, 18" chain, dual spinners, single axle, 28" tires, pull type.

**Agri-Craft fertilizer** tender on tandem axle carrier, 22.5 tires, hydraulic driven auger, pin hitch.

**Reddick 12-row** nitrogen rig, hydraulic fold,



w/John Blue ground driven pump, 3-pt.  
**KBH 300 gal.** 12-row hydraulic fold,  
 John Blue ground pump, 3-pt.  
**KBH 1625 gal.** poly nurse tank on tandem axle  
 trailer w/inductor & pump, tote rack on front,  
 22.5 tires, pin hitch, nice.  
 (2) **Reddick 1000 gal.** nurse tanks on  
 tandem axle carrier w/inductor & pump,  
 16" tires, pin hitch.  
**Reddick 400 gal.,** 12-row lay by rig,  
 hydraulic fold, 3-pt.  
**Reddick 300 gal.** 8-row lay by rig,  
 hydraulic fold, 3-pt.  
 (3) **Reddick 200 gal.** saddle tanks,  
 (1) sets mounts on 7630 -horizontal,  
 (1) set mounts 7210R – horizontal,  
 (1) set mounts on front of JD 7210R.  
 (2) **Reddick** lay by arms.

## EQUIPMENT

**Long peanut trailers,** (7) blue tandem,  
 (5) red tandem, (4) red single.  
**Benthal** 8-hole stack dryer, single phase –  
 located @ shop ¾ mile east of sale site.  
**John Deere Starfire 3000** receiver  
 w/450 RTK radio.  
 (3) **John Deere Starfire 6000** receivers SF!  
**Trimble 500** screen.  
**Teeject** Centerline 220 w/antenna.  
**Soilmover** 3/12 yd. hydraulic dirt pan,  
 dolly front, pull type.  
**John Deere 265** front end loader w/6' quick  
 attach bucket, mounts for series, last on 4250.  
**Eversman 329** land leveler, 10', pull type.  
**Bush Hog BH 225,** 10' hyd. blade, like new.  
**John Deere HX 14** rotary cutter, chain guards,  
 1000 pto, 3-pt., nice.  
**Bush Hog 13414,** 14' rotary cutter,  
 1000 pto, 3-pt.  
**Roanoke G-195** long arm mower, 1000 to, 3-pt.  
**Hardee 6'** rotary cutter, 540 pto, 3-pt.  
**Hardee** ditch bank mower, 540 pto,  
 manual slide, w/bow in slide, 3-pt.  
**Long I200** backhoe, 540 pto, manual  
 out rigger, 3-pt.  
**Drain digger,** inline 540 pto, 3-pt.,  
 looks almost new.  
**GT 8" x 30'** pto auger, 540 pto.  
**Hobbs 8" x 16'** electric conveyor.  
**200 gal. fuel tank** w/battery operated pump,  
 mounted on 4x8 single axle trailer, 15" tires,  
 pin hitch.  
**150 gal. L shaped fuel tank** w/battery  
 operated pump.  
**250 gal. oval fuel barrel,** ideal for pig cooker.  
 (2) **Roll around air compressors,**  
 (1) w/Honda, (1) w/Briggs & Stratton.  
**ICE** hot water pressure washer, 110 volt.  
**Aluminum diamond plate** L shaped fuel tank  
 w/toolbox, battery operated pump.  
 (8) **John Deere insecticide** hoppers  
**Bush Hog 13414,** 14' rotary cutter,  
 1000 pto (parts machine).  
**Hardee 14'** rotary cutter, 1000 pto,  
 3-pt. (parts machine).  
**John Deere** cotton picker grease pump.

## AUCTIONEER'S NOTE

**Dan Taylor's heart has always been in farming.** He followed in his father's footsteps, and grew up learning how to take care of the land & raise crops to support his family. He also attended NC State University & graduated with Associates Degree from the Ag Institute in 1983. After that, he returned home to the family farm again to continue working as he had before. He spent 40 more years farming, weathering the hard times & enjoying the good times. In the past few years, he was diagnosed with a heart condition, but he did not let that slow him down. Seeds still needed to be planted in spring, plants tended to in summer, & then crops harvested in fall. In the fall of 2022, however, he was forced to step away from the fields to undergo a heart transplant procedure. It's been a long road of recovery, but he persevered. Even though he's choosing to retire now, he still has a heart for farming.

**For more info give Dan a call @ 252-578-2247.**

## EQUIPMENT FROM OTHER FARMERS

**John Deere 9965** cotton picker 2 wd,  
 SN- NO9965X002085, 5759 engine hrs.,  
 3762 fan hrs.,  
**Peerless Mdl. 12** module builder.  
**Harrell boll** buggy  
**Reddick** 16-row sprayer, 300 gal. tank.  
**John Deere BWA** 4-row disc.  
 (8) **14.5 tires,** new, mounted on rims.  
 (10) **12' cattle corral panels** (like new).  
**Livestock gates,** various lengths.  
 (2) **Poly feed troughs** on galvanized frames.

**Inspection 8:00 – 5:00 ONLY week of sale.**  
**Path will be closed rest of time or call Dan for other inspection time.**



**Bid in person or online @ bid.ebharris.com**

**Terms & Conditions:** All purchases must be paid for sale day. All property sells as is where is with all faults, with absolutely no warranties implied or expressed in any way. All Serial Numbers, hp, mileage & hrs., unverified. All info printed in brochure is believed to be correct but not guaranteed. The auction company reserves the right to offer property in separate sales, combinations thereof or as a whole. Announcements made day of sale take precedence over printed material.

**Sales Tax Info** – We are now required to charge NC Sales Tax at our sales. If we do not have a completed sales tax exempt on file, you will be charged NC Sales Tax

For the toughest job – 4250.



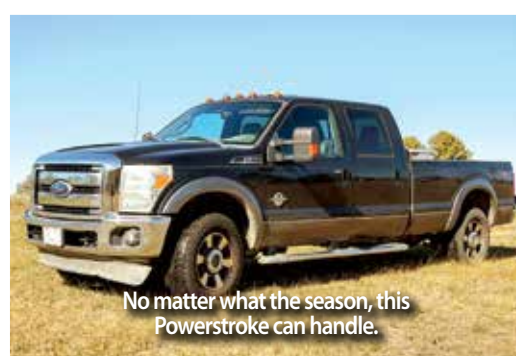
Work this 10-wheeler by the hr. or by the ton – both will pay



Good return on your investment – Speed King 160 bu.



No matter what the season, this Powerstroke can handle.



Get that planting done before the rain comes w/1725, 12-row, 36"







The right choice – 6190R



Work smarter not harder – 9670 – only 2271 separator hrs.



Get in where -U- fit – 7630.



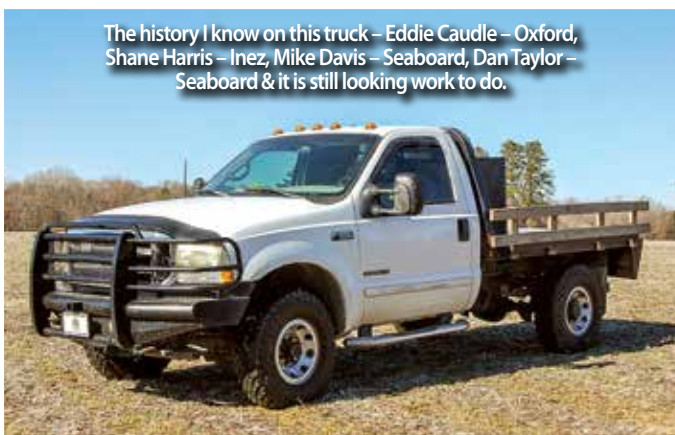
Straight up noon or the moonlight – R4023 - 2007 hrs. will be rolling.



Strong as new rope – 8300 & will be (2) of these grain carts.



Crank out production – 9996 – 2260 hrs.



The history I know on this truck – Eddie Caudle – Oxford, Shane Harris – Inez, Mike Davis – Seaboard, Dan Taylor – Seaboard & it is still looking work to do.



Peanut trailers will be @ sale site, dryer is located @ shop.