

FARM EQUIPMENT AUCTION

SWINSON FARMS, HUDSON FARMS & OTHERS

SATURDAY, 4TH DECEMBER 2021 – 10:00
WARSAW, NC



Go to one central auction & buy equipment
where you can have history on each piece.

DIRECTIONS:

I-40 travelers take Exit 364, Hwy, 24, travel west ½ mile, right onto Old Courthouse Rd. travel 1 mile, right on Penny Branch Rd., travel 2 miles, left on Blackmore Rd., travel ½ mile, right onto Bruce Costin Rd., to ½ mile, sale on left. Watch for auction signs. Also watch for signs off Hwy. 117.

SALE SITE ADDRESS:

232 W. Park Dr. – Warsaw, NC
(Four County Peanut Services Inc.)

SALE HELD RAIN OR SHINE

E.B.Harris, 6:15AM - 9:59PM **(252) 257-2140** Office

E.B., mobile..... **(252) 430-9595**

Office Fax **(252) 257-1035**

Fate, mobile..... **(252) 813-5852**

Shane Harris..... **(919) 497-7990**



Inc. / Auctioneers

Visit www.ebharris.com for updates.

3200 NC Hwy. 58
Warrenton, NC 27589

"The Complete Auction Service"

NCAL 1468

NC#C 4264

VAL 146

SCAL 3895

Ahead of the rest providing the best – 8235R



When no-till counts be ahead with a 1570.



Got a lot of "come on, lets go!"



If -U- rest too long the weeds will take the garden.



Swing a bush axe on a hot day & drink Kool-Aid @ the same time



TRACTORS, TELEHANDLER & FORKLIFT

John Deere 8530 MFWD, SN-DO28974, powered by 330 hp, 6-cyl. diesel, IVT, 1000 shift-on-the-go pto, (4) sets dual remote hydraulic outlets, cab, 480/70R34 dual front tires, 520/85R46 dual rear tires, inside rear wheel weights, quick hitch, 5054 hrs.

John Deere 8360R, SN-PDD072282, powered by 360 hp, 6-cyl. diesel, IVT transmission, 1000 shift-on-the-go pto, (5) sets dual remote hydraulic outlets, cab, 420/85T34 dual front tires, 480/80R50 dual rear tires, rear wheel weights, ILS front end active seat, quick hitch, 4065 hrs.

John Deere 8235R MFWD, SN-VDP080140, powered 235 hp, 6-cyl. diesel, power shift transmission, 1000 shift-on-the-go pto, (5) sets dual remote hydraulic outlets, cab, 380/80R38 front tires, 480/80R50 rear tires, inside rear wheel weights, power beyond quick hitch, 3824 hrs.

(3) **John Deere 7430 Premium, MFWD**, powered by 166 hp 6-cyl. diesel, power quad transmission, left hand shuttle, 1000 shift-on-the-go, (4) sets dual remote outlets, cab, 380/85R30 front tires, 420/90/R46 rear tires, SN-H007985 – 10,125 hrs., SN-H007201 – 8938 hrs., SN-H007823 – 10,383 hrs.

(3) **John Deere 6150 MFWD**, powered by 150 hp, 6-cyl. diesel, power quad transmission w/left hand shuttle, 1000 shift-on-the-go pto, (3) sets dual remote hydraulic outlets, cab, 320/85R34 front tires, 320/90R50 rear tires, 3208 hrs., 5397 hrs., 5297 hrs.

John Deere 8360R, SN-CDD080032, powered by 360 hp 6-cyl. diesel, IVT transmission, 1000 shift-on-the-go pto, (5) sets dual remote hydraulic outlets, cab, 420/85R34 dual front tires, 480/80R30 dual rear tires, power beyond, rear wheel, weights, Sheppard front tank bracket, quick hitch.

John Deere 8360, SN-HCD055202, powered by 360 hp 6-cyl. diesel, IVT transmission, 1000 shift-on-the-go pto, (5) sets dual remote hydraulic outlets, cab, 420/85R34 dual front tires, 620/70R46 dual rear tires, rear wheel weights, power beyond, 4907 hrs., one operator.

(4) **John Deere 8235R, MFWD**, powered by 235 hp 6-cyl. diesel, power shift transmission, 1000 shift-on-the-go pto, (4) sets dual remote hydraulic outlets, cab, 420/85R34 front tires, 480/80R50 rear tires, quick hitch, rear wheel weights, active seat, SN-VDP079568 – 6574 hrs., SN-ADP079443 – 6700 hrs., SN-VDP079070 – 5295 hrs., Shepard front mount tank bracket, (5) sets w/power beyond, no active seat, SN-HDP079459 – 6270 hrs.

John Deere 3420 telehandler, SN-Y207455, 4-cyl. diesel, w/loader forks.

John Deere tele-handler loader bucket.

Komatsu Mdl. FD25VIII, rubber tire forklift.

COMBINES

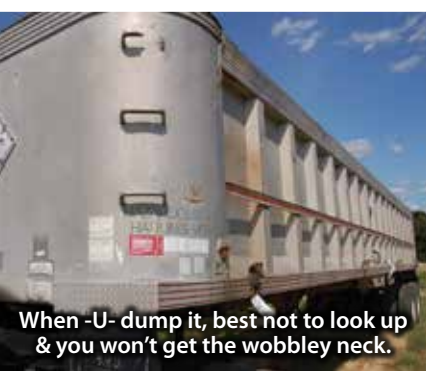
John Deere S670, SN-1HOS670SHD0758076, 4x4, 520/85TR42 dual front tires, 28L-26 rear tires, contour master, bin extension, 2713 hrs., 1827 separator hrs.

(2) **John Deere S660**, 520/85R42 duals front, 28L-26 rear tires, contour master, bin extension, SN-1HOS660Skd0756703 – 2973 hrs., 2302 separator hrs., SN-1HO5660SH00755625 – 2214 engine hrs., 1433 separator hrs.

(2) **John Deere 608C** corn heads, 8-row, 30", single point hookup, SN-CHX795146, EEX765793.

SPRAYERS & IRRIGATION REEL

(2) **John Deere 4730** sprayers, 800 gal. poly tank, 90' booms, stainless steel inductor, 380/90"R46 tires, w/JD 2630 display & JD 3000 receiver, SN-HXDOO28055 – section control, Auto Trac SF2 – 4813 hrs., SN-XLDOO24151 section control, Auto Trac SF2 – 3427 hrs.



When -U- dump it, best not to look up & you won't get the wobbly neck.



Look @ the tires on this 4255 & -U- can tell it's come from a different part of the country.

Amadas Reel Rain Mdl. F1025G5 irrigation reel, SN-450652, new, never been used.

TILLAGE & PLANTING EQUIPMENT & EQUIPMENT

Unverferth 28' field cultivator, hydraulic fold, 3-pt.

John Deere 1520 grain drill, hydraulic row markers, 7 1/2" spacing, rubber press wheels, sells w/JD 1570 no-till coulters drill cart.

Case IH Early Rise 1230, 12-row, 40" no-till planter, no-till coulters, no-till trash blades, stack fold, 3-pt. shed kept.

EZ 510 grain cart.

(3) **KMC** 4-row rolling cultivators, 48", 2 w/ fertilizer attachment.

(2) **KMC** 4-row Danish tine cultivator w/ fertilizer attachment, 48"

(3) **Knox 4-row** rolling cultivators, 48"

(2) **Powell** 1-row strippers.

(2) **Sheppard dump** carts.

John Deere 8-row cultivator

8-row incorporator

John Deere 4255, 16-speed quad transmission, cab, air, front weights, rear wheel weights, 10,000 hrs., very nice tractor, field ready.

Case IH 2555, 4-row cotton picker, 4x4, set on 30" rows, SN-JJC0249552.

(3) **Case IH 2555** 4-row cotton pickers, 4x4, set on 38" rows, SN-JJC0249407 3275 engine hrs., 2055 fans hrs., SN-JJC0249518 3407 engine hrs., 2000 fan hrs., SN-JJC010036 2669 engine hrs., 1690 fan hrs., w/auto lube.



Bid online or onsite.

BUS, TRUCK & TRAILER

'94 **IH 3800** bus, DT466 engine, automatic, nice.

ö '88 **IH S1954**, 6-cyl. diesel, 9-speed transmission, air brakes, west coast mirrors, 22.5 Budds, Johnie Gregory 16' twin cylinder dump w/4' grain sides, 236" wheel base, 328,054 miles, VIN-1HTLD22NOJH579095.

ö '89 **Ti-Brook** 38' x96" aluminum frameless dump trailer, poly liner, roll over tarp, 56" sides, 24.5 Budds, VIN-1T9EAA526KG021740.

ö Indicates equipment that was offered for auction in Angier, NC on 9-18-21. Titles were lost @ that time, we have filled out all paper work w/NCDMV & hope to have back in hand before sale day.

EQUIPMENT FROM OTHERS

John Deere 6415, SN-LO6415D510570, w/Alamo long reach side mower, 6249 hrs., has rebuilt transmission by James River.



It is time to change horses?

Terms & Conditions: All purchases must be paid for sale day. All property sells as is where is with all faults, with absolutely no warranties implied or expressed in any way. All Serial Numbers, mileage & hrs. unverified. All info printed in brochure is believed to be correct but not guaranteed. The auction company reserves the right to offer property in separate sales, combinations thereof or as a whole.



Ride forward in growth & spray crops @ the same time



So close to new -U- can see your reflection in the paint.



From harrow to harvest 8235R will be there from start to finish.



These 8235R's look good going or coming.



Would a 7430 like this inspire you to get out of bed in the morning?



Absolute ground thumper.



Beans in the teens.



Rewards are always in season w/30" headers.

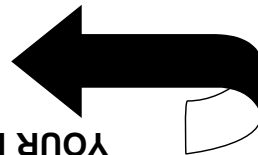


-U- can tell the operator on this 8235 was particular- he had a hand washing station before he got in.



"THE COMPLETE AUCTION SERVICE"
RETURN SERVICE REQUESTED

Inc. / Auctioneers
3200 NC Hwy. 58
Warrenton, NC 27589
NCAL 1468



YOUR PERMANENT BUYER'S # IS HERE

FIRST CLASS MAIL

TIME SENSITIVE MATERIAL - DELIVER ON TIME!!
IN HOME 11-23 / 11-24

Permanent Buyer's Note: When you receive this brochure, advise us of the changes that need to be any changes or if you are receiving more than one address to make sure we have it correct. If there are & you never have to register. Check your name & your name. Bring this brochure with you to the sale chure in the mail, your permanent # appears above

Presorted
First Class Mail
U.S. Postage
PAID
Permit No. 62
Macon, NC
27551