

FARM EQUIPMENT AUCTION

Swinson Family Farms LLC

& Others

SATURDAY 10TH APRIL, 2021 • 10:30 AM

MT. OLIVE, NC

DIRECTIONS: Being on Hwy. 903, 5 miles north of Faison & 5 miles south of Hwy. 55, turn on Beautancus Rd. travel 2 miles, sale on left.

SALE SITE ADDRESS: 1632 Beautancus Rd. Mt. Olive, NC

-U- can't build a reputation on what -U- are going to do –
that said -Long has a good reputation.



When time is of the
essence have a Granville
stripper in the field.



SALE HELD RAIN OR SHINE

E.B.Harris, 6:15AM - 9:59PM **(252) 257-2140** Office
E.B., mobile..... **(252) 430-9595**
Office Fax **(252) 257-1035**
Fate, mobile..... **(252) 813-5852**
Shane Harris..... **(919) 497-7990**



3200 NC Hwy. 58
Warrenton, NC 27589

"The Complete Auction Service"

NCAL 1468
NC#C 4264
VAL 146
SCAL 3895



Build pads & ponds w/ease – Reynolds 15 yd.



8-row M & C – tractor doesn't take as much hydraulic lift power w/just 8 setters on board.



Lannen setters put those plants in the ground as tender as mother's love.



Granville live bottom compliments the other harvest equipment.



(2) sets of 12-row planters – JD & IH – seed may be up by sunrise.

BULK BARNs, TOBACCO EQUIPMENT, HI-CYCLES

(12) **Long all steel**, 10-box barns, 3-phase, LP gas.

(10) **Long all steel**, 10-box, single phase, LP gas, (1 is Blue tag – Long Argri-business)

(8) **Long all steel** 8-box barns, LP gas, single phase, (5) w/ Long heat exchangers, (2) Bill Grady Warsaw Welding heat exchangers, (1) BulkTobacco heat exchangers.

(21) **Long** (blue trim) 8-box barns, LP gas single phase

(2) **Long** (red trim), 8-box barns, LP gas, single phase.

(2) **Speedling** 36 x 250 green houses.

1984 **Trinity 15,000 gal.** LP gas tank – located @ a569 Norwood Ezzell Rd. Mt. Olive, NC)

(4) **DeCloet** 2-row harvesters w/defoliator head & dump box, SN-03034, 97435, 96232 w/JD 4-cyl diesel, '92 model w/Perkins 4-cyl. diesel.

Granville 2-row stripper w/ dump box, JD 4-cyl. diesel, 901.5 hrs.

(2) **Powell** 1-row strippers, pull type.

Granville live bottom box, 3-pt.

(2) **Sheppard** 24' x 5' drag belt trailers, tandem axle, pin hitch.

(2) **Sheppard** hi-lift stripper trailers, single axle, pin hitch.

(4) **16' shop made**, single axle, drag belt trailer, w/roll over tarp, pin hitch, (2) w/chains, (2) w/belts.

(3) **Sheppard hydraulic** power pac

Taylor 22' x 9 1/2' transition conveyor.

Taylor leaf loader.

(3) **Granville tobacco** balers w/scales, set up to run off of tractor (1 working order, (2) need some attention)

Sheppard 2-box rail system w/scales.

Hydraulic driven motor to unload trailer.

C & M 8-row carousel setter, hydraulic stack fold, 3-pt.

Lannen 8-row carousel setter, mounted on KMC 7x7 stack fold tool bar, 3-pt.

(6) **Ford buses** converted to drag belt to haul green tobacco, w/roll over tarps.

(2) **Ford buses** converted to haul plants.

Ford bus used to transport laborers.

Note: All buses are diesel, automatic transmission, air brakes.

John Deere 6000 hi-cycle SN-000178, 2-post roll guard w/canopy, easy ride front end, set up to spray 8-rows.

John Deere 6000 hi-cycle, SN-003006, w/topper valve, set up to spray 8-rows, has cab but missing some glasses.

John Deere 6000 hi-cycle, w/cab, sells w/Powell 4-row topper– machine is minus tank & pump.

Sheppard 4-row lay by rig, mounts on hi-cycle.

EXECAVATOR, TELE-HANDLER, TRUCKS

Cat 312BL excavator, cab, 28" pads, hydraulic thumb, w/36" bucket, 7656 hrs.

Clean out bucket – last on 312BL

V ditching bucket, last on 312BL

Cat TH407 tele-handler, 4x4, cab, 48" forks, 15.5-25 tires, 5197 hrs., SN-TBY01389.

1988 **Mack RD690** road tractor, 6-cyl. diesel, 6-speed, air brakes, 22.5 Budds front, 24.5 Budds back, sliding 5th wheel tandem, 190" wheel base, wet line kit, 520,906 miles.

1998 **Ford** 11-passenger van, 8-cyl. as, automatic, below eyeliner mirrors, 16" tires, 293,365 miles.

2006 **Ford F350**, 4x4, 4-door, Powerstroke 6.0 diesel, 17" tires,

w/Knapheide service body, 176" wheel base, 254,180 miles.

2007 **IH 4300** cab & chassis, DT 466 diesel, automatic, air brakes, west coast mirrors, 22.5 Spokes, 256" wheel base, needs engine.

2006 **Ford 350**, 4x4, 4-door, automatic, 18" tires, been wrecked, good cab, transmission & rear end.

1999 **IH 9400 Eagle**, Cummins N14 diesel, 9-speed, air brakes, west coast mirrors, 22.5Spokes, 197" wheel base, 787K, needs engine – locked up.

1991 **KW T600**, sleeper cab, road tractor, Detroit Series 60, 10-speed, 22.5 Budds, air ride suspension, sliding 5th wheel, blown head gasket.

EQUIPMENT

KMC 8-row ripper bedder, hydraulic fold, spring reset shanks, 3-pt.

KMC 8-row hydraulic fold row incorporator.

Lilliston 4-row rolling cultivator, w/hydraulic driven fertilizer, 3-pt.

(2) **KMC** 4-row rolling cultivator, (1) w/ground driven fertilizer.

4-row rigid shank cultivator, w/adjustable gauge wheels, 3-pt.

4-row bed shaper, 3-pt.

(2) **John Deere 12-row** hydraulic fold row markers.

(4) **KMC row** incorporator row units.

Backhoe buckets, (1) 3', (1) 2', (1) 14", (1) V ditch.

Bale squeeze, fits on forklift, will handle (2) bales of tobacco or (4) bales of cotton.

Massey Ferguson 1050 feed mill, could use some work.

(2) **Pride of the Farm** 3-ton hog feeders.

(2) **Pride of the Farm** 1-ton hog feeders.

2013 **Ford F350** dually pickup bed.

2013 **Ford F350** dually rear bumper



Ever considered in the off-season bailing pine straw or aluminum cans?



Be 2 of these 6-row Amadas – pto U joints not needed.

2013 **Ford F350** dually gooseneck hitch.
 (2) **Taylor modular builders.** **PTO winch, 3-pt., made** from Franklin skidder, hydraulic controlled.
Knapheide 8' service body.
Ingersoll Rand air compressor w/Kohl 12.5 motor.
 All equipment on 46".

EQUIPMENT FROM NEIGHBORING FARMER-STEVE GRADY

Case IH 635 AFS, 6-row modular cotton picker, SN-YCT017822, 4x4, 500/950.32 dual front wheels, 23.5L5526 rear tires, 1806 engine hrs., 1256 fan hrs.
 2012 **Amadas 9970 CDS**, 4x4 peanut combine, 6-row header handles 38" rows, dump basket, approx. 2000 hrs. on engine, 800/65R322 front tires, 18.4-26 rear tires, combine SN-500193, header SN-501092.
 (2) **Amadas ADI6 Yield Save**, 6-row peanut diggers, hydraulic driven.
John Deere 7230, SN-H652274, power quad transmission w/left hand shuttle, 540 & 1000 shift-on-the-go pto, (3) sets dual remote hydraulic outlets, 11:00-20 SL front tires, 460/85R39 rear tires, 4368 hrs.
KMC 6-row hydraulic fold peanut lifter, 540 pto.
EZ Trail 510 grain cart, 1000 pto, hydraulic auger, shed kept.
John Deere 1720, 12-row, 38" vacuum planter, stack fold, w/monitors.
Case IH Early Rise 1230, 12-row, 40" no-till planter, no-till coulters, no-till trash blades, stack fold.
KMC 12-row stack fold bedder, 38", w/sod buster shanks, dirt door, gauge wheels.
Unverferth 12-row ripper/ripper, 40", hydraulic fold, gauge wheels, automatic reset rippers.

KBH 12-row nitrogen applicator, hi-clearance, pull type.
KMC 6-row ripper bedder, 38".
KMC & Lilliston 4-row rolling cultivator w/fertilizer, will go to 48".
Woods S20CD frail mower, 20', 1000 pto, 3-pt. new clutch.
Reynolds 15 yard all hydraulic pan, pull type, (4) 17.5-25 rear tires, hooks to tractor drawbar.
Garfield 8' box blade, w/hydraulic lift & tilt cylinder, pull type.
24' x 8' w/8' flat platform (platform is 4 1/2' off ground) portable loading ramps, tandem axle, w/steel grate for floor, been used for skid steer to run on to load litter.
 Approx. **2000 gal. LP gas tank** mounted on '83 Ford F700, V8 LP gas, 4-speed w/2-speed, 9:00-20 Spoke wheels, '05 **GMC Canyon, 4x4**, Vortex 3500 engine, automatic, 4-door, 15" tires, has farm bruises.
 '00 **Ford Ranger**, 2.5 gas, 5-speed, 15" tires, 190K miles.
 '84 **Chevrolet** 3/4 ton pickup, 4x4, 6.2 liter diesel, automatic, 15" tires, 63,778 miles, has new motor.
 '90 **IH Blue Bird**, DT466, automatic, alr brakes, 22.5 Budds, 145K miles, passenger bus, good.
 '76 **Ford F350**, V8 gas, 4-speed, 12' steel flatbed, west coast mirrors, 16" tires, 85, 544 miles.
 '76 **Chevrolet C60**, V8 gas, 4-speed, 2-speed, 16' twin cylinder dump, 9:00-20 Spokes, been sitting a while.
Electric sampler peanut sheller. 14.5 new **tires**, mounted on rims.
 14" implement **tires** mounted on 6-hole universal rims.

COLLECTIBLE CORNER

5 gal. milk can
Remington wood ammo box.

AUCTIONEER'S NOTE

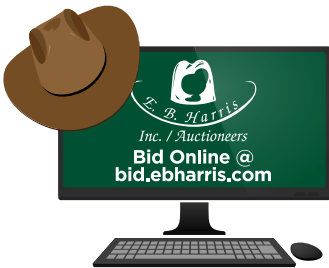
Vic is discontinuing his tobacco farming operation to devote more time to the direct to the consumer peanut business.
 For more info call or text Vic @ 919-738-0158.

AUCTIONEER'S NOTE #2

Steve Grady Farms, the adjoining farm, is changing their operation from peanuts & cotton but will continue in cattle, turkeys, & swine.
 Note the low hrs.
 For more info on this equipment call of text Stephen Grady 919-222-8239.

Terms & Conditions: All purchases must be paid for sale day. All property sells as is where is with all faults, with absolutely no warranties implied or expressed in any way. All Serial Numbers, mileage & hrs. unverified. All info printed in brochure is believed to be correct but not guaranteed. The auction company reserves the right to offer property in separate sales, combinations thereof or as a whole. Announcements made day of sale take precedence over printed material.

We are now required by NC Dept. of Revenue to charge sales tax unless we have a completed sale tax-exempt form E595E on file.



Bid in person on site or online
 bid.ebharris.com



Make sure the crib is always full w/510 EZ Trail.



Now could be the right time to make a move w/a DeCloet.



Go on w/the future w/(3) JD 6000 to take home



Every now & again we all need a little lift.



15,000 gal. on a solid foundation gets your barn filled up.



There will be several live bottoms that will roll in the green leaf.



Starts continue to line up w/a Cat Tele-Handler.



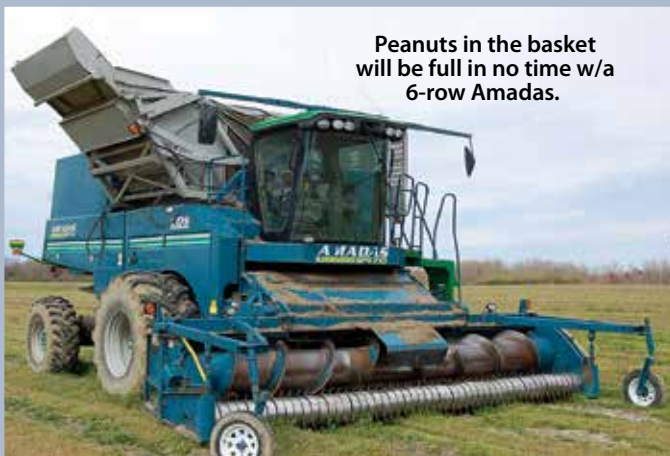
Cotton stalks made into mulch in a hurry w/a 20' Woods.



A good sort of plumb w/a hydraulic thumb.



If your aim is off & have not been hitting the target, shoot for this 7230, it will put -U- back in line.



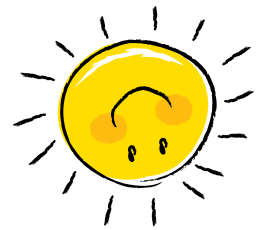
Peanuts in the basket will be full in no time w/a 6-row Amadas.



Cotton season is short – make the best use of your time w/a 6-row Case IH 635 AFS bringing in the crop.

See You.

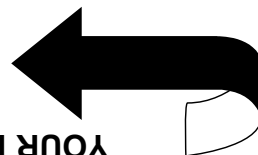
Call, Text or E-mail.
We will be glad to



"THE COMPLETE AUCTION SERVICE"
RETURN SERVICE REQUESTED

3200 NC Hwy. 58
Warrenton, NC 27589
NCAL 1468

Inc. / Auctioneers



YOUR PERMANENT BUYER'S # IS HERE

FIRST CLASS MAIL

TIME SENSITIVE MATERIAL - DELIVER ON TIME!!
IN HOME IN HOME 3-30 / 4-1

Permanent Buyer's Note: When you receive this brochure in the mail, your permanent # appears above your name. Bring this brochure with you to the sale & you never have to register. Check your name & address to make sure we have it correct. If there are any changes or if you are receiving more than one brochure, advise us of the changes that need to be made.

Presorted
First Class Mail
U.S. Postage
PAID
Permit No. 62
Macon, NC
27551