

# FARM EQUIPMENT AUCTION

## Robert Proffitt Farms

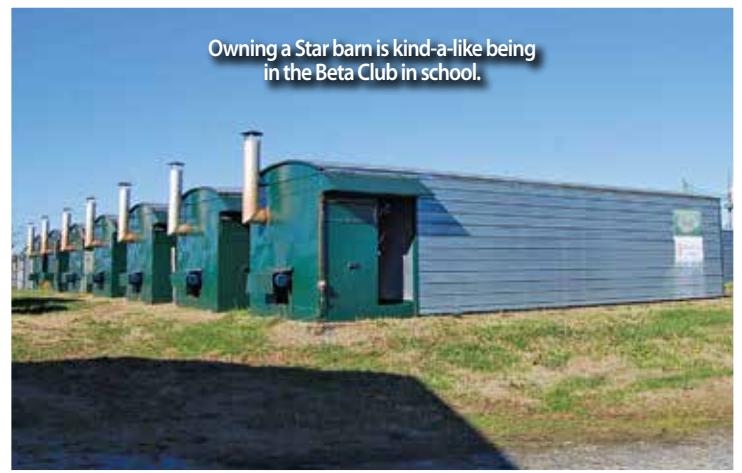
**SATURDAY 27<sup>TH</sup> MARCH 2021 - 10:00 AM**  
**SOUTH HILL, VA**

**DIRECTIONS:** Being on Hwy 58, 8.7 miles west of South Hill, turn on Baskerville Road (669), travel 1/4 mile, bear right on Busy Bee Road (673), travel 2 miles, sale on right.

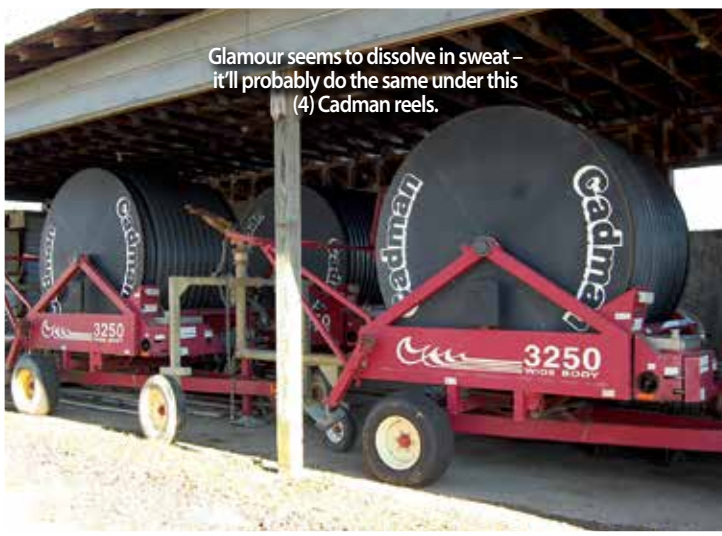
**SALE SITE ADDRESS:** 2420 Busy Bee Road – South Hill, VA 23970



Always be a forward leader w/a 6170R.



Owning a Star barn is kind-a-like being in the Beta Club in school.



Glamour seems to dissolve in sweat – it'll probably do the same under this (4) Cadman reels.



A good sort of plumb – JD 6700.

### SALE HELD RAIN OR SHINE

E.B.Harris, 6:15AM - 9:59PM..... **(252) 257-2140** Office

E.B., mobile..... **(252) 430-9595**

Office Fax..... **(252) 257-1035**

Fate, mobile..... **(252) 813-5852**

Shane Harris..... **(919) 497-7990**



*Inc. / Auctioneers*

Visit [www.ebharris.com](http://www.ebharris.com) for updates.

**3200 NC Hwy. 58**  
**Warrenton, NC 27589**

**"The Complete Auction Service"**

NCAL 1468

NC#C 4264

VAL 146

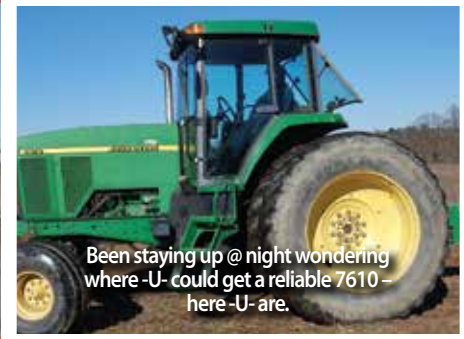
SCAL 3895



Always make sure that folks have something to chew on w/a Granville 2-row stripper.



Be 2 of these units – pump the creek so low catfish will be sitting on the bank singing a song.



Been staying up @ night wondering where -U- could get a reliable 7610 – here -U- are.

## TRACTORS, FORKLIFT, COMBINE, TRUCKS

**John Deere 6170R**, powered by 170 hp, 6-cyl. diesel, power quad w/ left hand shuttle, differential lock, ps, 540 & 1000 shift on the go pto, dual remote hyd. outlets, cab, 420/85R30 front tires, 480/8R46 rear tires, 5931 hrs., Green Star ready, has joystick for loader.

**John Deere 7610**, SN H025992, powered by 140 hp 6- cyl. diesel, power quad transmission, differential lock, 540 & 1000 shift-on-the-go pto, (2) sets dual remote hyd. outlets, cab, 14 L-16.15L front tires, 18.4R42 dual rear tires, 8471 hrs.

**John Deere 4430**, SN 04033QR, powered by 138 hp, 6 cyl. diesel, quad-range transmission, differential lock, 540 & 1000 shift-on-the-go pto, (2) sets dual remote hyd. outlets, 4 post roll-guard w/canopy, 10:00-16 front tires, 20.8-34 rear tires, 9269 hrs.

**John Deere 4440**, SN 050905R, powered by 130 hp 6 cyl. diesel, quad-range transmission, differential lock, 540 & 1000 shift-on-the-go pto, (2) sets dual remote hyd. outlets, cab, 11:00-16 front tires, 18.4-38 dual rear tires, front weights, 77733? hrs., single lift assist.

**John Deere 2955**, SN-624120, powered by 97 hp 6 cyl. diesel, standard speed w/ rabbit & turtle on dash, differential lock, ps, 540 & 1000 shift-on-the-go pto, (2) sets dual remote hyd. outlets, 2 post roll-guard w/ canopy, 10:00-16 front tires, 18.4-38 rear tires, 15,246 hrs., spread out for tobacco.

**John Deere 5203**, SN V0009469, powered 56 hp by 3 cyl. diesel, standard transmission, differential lock, ps, 540 shift-on-the-go pto, set dual remote hyd. outlets, 2 post roll-guard w/canopy, 7.50-16 front tires, 14.9-28 rear tires, 7819 hrs.

**Massey Ferguson 255**, SN 9A266216, standard transmission, differential lock, ps, 540 shift-on-the-go pto, (2) sets dual remote hyd. outlets, 7.50-16 front tires, 16.9-30 rear tires, 4123 hrs., sells w/ MF 236 front end loader w/ 5' bucket.

**IH 140 w/cultivator arms.**

**IH 140 fertilizer hoppers.**

**John Deere 9410 Maximizer** combine, SN-X675261, 3010 engine hrs., 2215 separator hrs., new tires.

**John Deere 918**, grain head, SN-F675566.

**Unverferth HT25**, header cart. 1991 **Chevrolet Kodiak**, 8-cyl. gas 5-speed, 2-speed rear axle, west coast mirrors, 10.00-20 Spokes, Simpson 25' twin-cylinder body, 40" grain sides, 244" wheel base, 420,752 miles.

1975 **Chevrolet C60**, 8-cyl. gas 4-speed, 2-speed rear axle, west coast mirrors, 8.25-20 Budds, 15 1/2' dump body w/ 42" grain sides, 183" wheel base, 95921 miles.

1978 **Chevrolet C70**, 8-cyl. gas 5-speed, 2-speed rear axle, west coast mirrors, 9.00-20 Spokes, 16' treated wood flatbed body.

1978 **GMC C65**, 8-cyl. gas 5-speed, west coast mirrors, 9.00-20 Spokes, 8' contractors dump body.

1977 **Ford F150**, 4x4, runs.

'97 **Ford F350** pickup, 4-door, gas. **Several pickups**, 1/2 ton, 1 ton, some running, most have many farm bruises.

## BULK BARN, IRRIGATION & TOBACCO EQUIPMENT

(17) **Powell Star**, 9 box, w/Cureco.

(4) **Powell** 126-rack converted to (10) DeCloet boxes.

(3) **Powell** 150-rack converted to (10) DeCloet 28" boxes, 1-w/Evans burner, 2-w/Wayne burners

**All barns LP gas, single phase.**

(150) **Powell racks** like new.

(4) **Cadman 3250** irrigation reels w/Nelson big gun, on 3-wheel cart, w/Honda engines, SN-3719706, these 3 have wide body SN-8630802, SN-8560802, SN-8901205, excellent.

(2) **John Deere** 6-cyl. diesel irrigation pumps – Rovatti F33K1002E pump, 2082 hrs., on single axle carrier w/200 gal. fuel tank., (1) 3000 hrs., (1) 2000 hrs.

Approx. **2500' Wade Rain 6"** pipe, 20' sections.

Approx. **1200' Wade Rain 4"** pipe, 20' sections.

Approx. **1200' Ames 4"** pipe, 20' sections.

Approx. **1000' Ames 3"** pipe, 20' sections.

Approx. **1080' Ringlock 6"** pipe, 30' sections.

(15) **Nelson** 100 big guns.

**Irrigation fittings** – several pickup loads.

(3) **pto irrigation pumps**, good.

(2) **Gorman-Rupp** pto pumps for parts.

**Granville Precision box loader** w/scales & box rails, electric driven.

**Granville box** stander.

**Granville 6'x16'** transition conveyor, electric.

**Granville** live bottom box, 3-pt.

**Granville 2-row stripper**, John Deere 4 cyl. diesel, 795 hrs., SN-HORV200114-64.

(2) **DeCloet 2-row harvesters**, JD 4-cyl. diesel, w/Sheppard dump boxes, SN-95094, 96247.

**Cecchi & Magli** 4-row transplanter, 3-pt., set on 46".

1990 **GMC bus** automatic transmission, diesel, 22.5 tires, tobacco body w/Sheppard drag belt.

**Shepard hyd.** drive head.

**TDC tumbler** on single axle carrier, electric driven.

(3) **Taylor live bottom trailers**, hyd. driven, single axle.

(2) **Powell** box movers.

(4) **Single axle box trailers** for DeCloet boxes.

(5) **Single axle box trailers** for DeCloet or Powell boxes.

(2) **Tobacco balers** w/scales, on wheels, 2" ball hitch.

**Powell** 4-row topper.

**Hydraulic power** pac to run baler.

(2) **Sets DeCloet chain stripper heads.**

**28" metal green** tobacco boxes

**32" metal DeCloet** tobacco boxes

**Powell** racking table.

**Powell** deracking table.

**Roanoke** racking table, new.

(2) **Greenhouse** plant trailers, 6 & 10 acres.

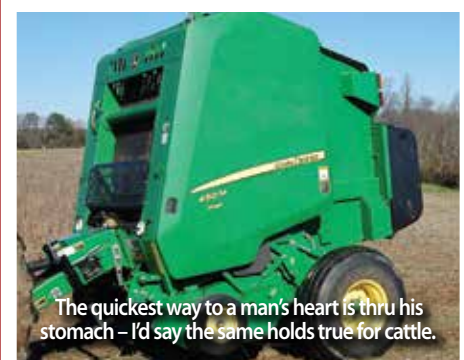
(2) **Irrigation pipe trailers.**



Face the sunshine – U'll be cool in a 6500.



The cows "herd" on the street that a Priefert is gentle on the body.



The quickest way to a man's heart is thru his stomach – I'd say the same holds true for cattle.

Plant droppers on this Checchi & Magli have so much fun they may want to buy a ticket to ride.



Prices of beans & corn looking up – get them in w/a 9410.



Want a mower that will cut the good crop – try a JD 630 MoCo.



**Algae** removing attachment, goes on end of suction line

**Pickup load of pipe** accessories Wade Rain, Ames, Ringlock 3-6

### TILLAGE EQUIPMENT

**John Deere Mdl. 220** 18', 48-blade hydraulic center fold, 9" spacing, tandem wheels.

**John Deere Mdl. 637**, 13½', 38-blade disc, 9" spacing, tandem wheels.

**Bush Hog, 4-row rolling cultivator** w/ground driven fertilizer, 3-pt. set on 46"

**KMC 4-row rolling cultivator**, 3-pt.

**KMC 4-row rolling disc cultivator** w/110 gal. poly tank & spray attachment, set on.

**W&A 4-row bedder** w/hydraulic fold, row markers w/150 gal. fumigant tank

**2-row high clearance middle buster**, mounts on hi-cycle.

**John Deere 4-bottom plow**, 16', 3-pt. (2) **King chisel plows**, 14 & 11-shank, 3-pt.

**John Deere 8200 grain drill**, double disc, 11', w/small seed attachment, pull-type.

**8' tillage tool**, 3-pt.

**JD 900**, 5-shank V ripper.

**JD 915**, 5-shank V ripper.

### SPRAYERS & APPLICATORS

**John Deere 6700 hi-cycle**, SN-X004143, w/John Deere 1800 display, 4051 hrs. set up for 8-row tobacco, Green Star ready.

**John Deere 6500 hi-cycle**, SN-X006298, 5185 hrs., John Deere rate controller, set up for 8-row tobacco.

**John Deere 6000 hi-cycle**, w/cab, showing 1800 miles.

**Johnson 300 gal. pull-type sprayers**, set up to spray 4-row.

**Reddick 300 gal. front mount tank**, last on 6170R.

**1550 gal. flat bottom nurse tank**.

**1100 gal. flat bottom nurse tank**.

**Reddick 150 gal. saddle tanks**, last on John Deere 7610.

**Snyder 100 gal. saddle tanks**.

### HAY, GRAIN, LIVESTOCK EQUIPMENT

**John Deere 450M**, silage special, round baler, 540 pto., twine & net, hydraulic pickup, wide pickup, SN-SCKK451080.

**John Deere 336**, square baler, 540 pto, twine tie.

**Ford 532 square baler**, 540 pto, twine tie.

**John Deere 630 MoCo** 540 pto, rubber conditioner, 10' cut, SN-RTFG420888

**New Holland 256 hay rake**, pull-type.

**John Deere 702**, 8-wheel finger hay rake, pull-type.

**Krone 5.52/4x7T**, 4-basket tedder, 540 pto, pull-type.

**Several 3-pt. bale spears**, some are hi-lift.

(3) **16', 4-wheel hay wagons**.

**28'x8' flatbed trailer**, 3 axle, 2 5/16 hitch, 14.5 tires, good hay trailer.

**Hay unroller**, 3-pt.

**Frontier bale spear**, global hook-up, last on H360 loader.

**Worksaver** hydraulic post driver, 3-pt.

**Priefert portable squeeze chute** w/palpitation cage.

(2) **Priefert alley slider gates**.

(2) **Priefert alley bows**.

(6) **Priefert 12' panels**.

(24) **12' galvanized panels**.

(4) **10' galvanized panels**.

All are heavy duty & nice

(5) **12' galvanized bow gates**.

(1) **10' galvanized bow gates**.

(1) **12' galvanized panel**

w/4' walk-thru.

**15-ton hopper bottom feed tank** w/slide door.

(2) **Ford 532 sq. balers (1 for parts)**

(2) **16' hay wagons**.

(2) **Scissors bale spears, 3-pt.**

**Several sets hay spears**

**Krone 4-basket hay tedder**, for parts.

### EQUIPMENT

**John Deere H360 front end loader** w/3<sup>rd</sup> function, last on 6170R, almost new, minus joystick.

**John Deere HX15 rotary cutter**, hydraulic fold, stump jumpers, 540 pto, could use some deck work.

**John Deere 1018**, 10' rotary cutter, 540 pto, pull-type.

**Fred Cain 5' estate mower**, 540 pto, 3-pt.

**Super C box blade**, 12' dual wheel, pull-type.

**Befco Bridge hitch**, last on John Deere 8200 drill.

**275 gal. portable fuel tank** w/manual pump on single axle carrier, 14.5 tires, pin-hitch.

**500 gal. diesel fuel tank** w/electric pump.

All are heavy duty & nice

**250 gal. diesel fuel tank** w/hand pump.

**150 gal. diesel fuel tank** w/hand pump.

**110 gal. diesel fuel tank** w/hand pump.

**Cloripic attachment** for 4-row plow.

(2) **Sets duals & hubs**, last on 4430.

**JD quick hitch**, last on 6170R

(2) **Front mount hitches** for JD 50 hp tractor for moving trailers.

(2) **30.5L-32** used tires

**John Deere front weights** (tons), thick & thin, some late models.

**Porta-John**

**Other Absolute Consignments Accepted**

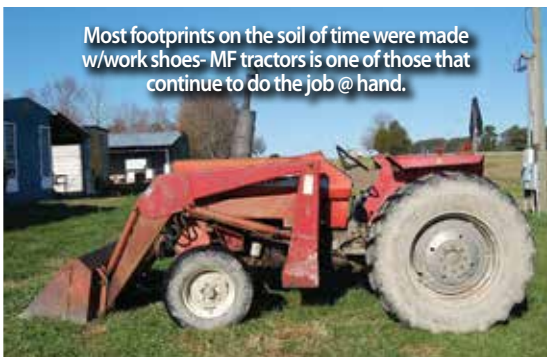
### AUCTIONEER'S NOTE

**Robert Proffitt Farms** is having a dispersal of their equipment as they are getting out of tobacco completely & cutting way back on their other crops & cattle so they can devote more time to Proffitt Truss & Builders Supply in South Hill, VA. Be with us Sale Day, take home equipment that will be efficient working in most any operation.

**For further information call or text Robert @ 434-774-9190**

**BID IN PERSON ON SITE OR ONLINE @ ebharris.com**

Most footprints on the soil of time were made w/work shoes- MF tractors is one of those that continue to do the job @ hand.



Make the biscuit & gravy workout on time w/Krone tedder in the hay crop.



**Terms & Conditions:** All purchases must be paid for sale day. All property sells as is where is with all faults, with absolutely no warranties implied or expressed in any way. All Serial Numbers, mileage & hrs. unverified. All info printed in brochure is believed to be correct but not guaranteed. The auction company reserves the right to offer property in separate sales, combinations thereof or as a whole. Announcements made day of sale take precedence over printed material.



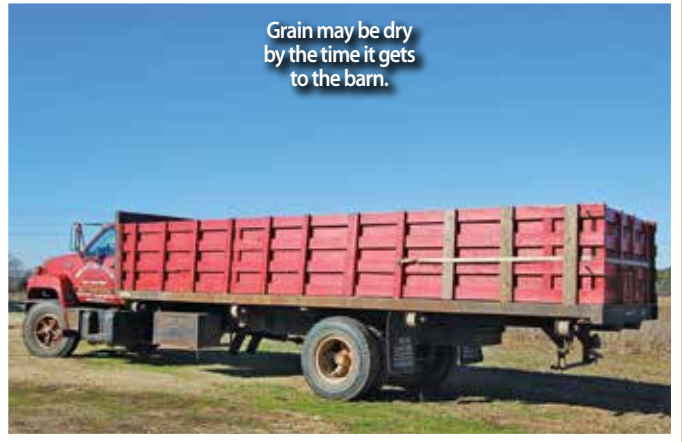
Prevention comes first on this farm – they greased it before it squeaks & that's why they last.



Want to rise to the next level – JD H360 – call it new.



Remember when folks use to sweep the ground around the house w/a brush broom – this JD rake would have been faster.



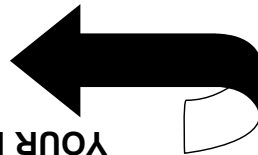
Grain may be dry by the time it gets to the barn.

**BEING  
PREPARED  
MAKES  
THE JOB GO  
ALOT  
SMOOTHER**

“THE COMPLETE AUCTION SERVICE”  
RETURN SERVICE REQUESTED

NCAL 1468  
Warrenton, NC 27589  
3200 NC Hwy. 58

*Inc. / Auctioneers*



**YOUR PERMANENT BUYER'S # IS HERE**

**FIRST CLASS MAIL**

**TIME SENSITIVE MATERIAL - DELIVER ON TIME!!  
IN HOME 3-4 / 3-6**

Permanent Buyer's Note: When you receive this brochure, advise us of the changes that need to be made. any changes or if you are receiving more than one address to make sure we have it correct. If there are & you never have to register. Check your name & your name. Bring this brochure with you to the sale chure in the mail, your permanent # appears above

Presorted  
First Class Mail  
U.S. Postage  
PAID  
Permit No. 62  
Macon, NC  
27551