

FARM EQUIPMENT AUCTION

JOHN HARDWICK

SATURDAY 23RD JANUARY 2021 - 10:00 AM

WHITEVILLE, NC

**SHED KEPT.
SOLID
EQUIPMENT.
THE KIND
THAT -U- CAN
WORK WITH**

DIRECTIONS: Being on Hwy. 701, 13 miles south of Hwy. 74 in Whiteville & 5 miles north of Tabor City. Watch for auction banner

SALE SITE ADDRESS: 12027 James B. White Hwy. South Whiteville, NC

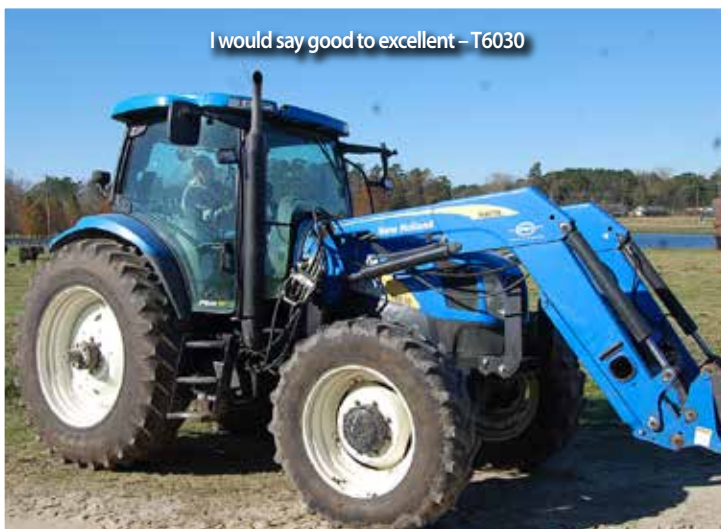
NOTE: GPS will stop you before you get to sale site. If you follow E.B.'s GPS it will get you within 3 miles.



Better times @ harvest time w/S660, only 1367 separator hrs.



Time to change horses – well put this NH 8970 in the field.



I would say good to excellent – T6030



Never put the key to happiness in someone else's pocket – 2004 KW

SALE HELD RAIN OR SHINE

E.B.Harris, 6:15AM - 9:59PM.....(252) 257-2140 Office

E.B., mobile.....(252) 430-9595

Office Fax.....(252) 257-1035

Fate, mobile.....(252) 813-5852

Shane Harris.....(919) 497-7990



Inc. / Auctioneers

Visit www.ebharris.com for updates.

**3200 NC Hwy. 58
Warrenton, NC 27589**

"The Complete Auction Service"

NCAL 1468

NC#C 4264

VAL 146

SCAL 3895

In the driver seat w/a '03 KW T300 – Confucius said 3 things cannot be hidden for long – the sun, moon & truth



JD 4730 – one operator – just 2121 hrs.



No need for the new norm – old normal is fine – (2) Kuhn disc on this auction to choose from



Leaves the field some kind of nice – leave if folded up in the cow pasture – it doubles as a cattle back scratcher as well.



Trending in the right direction w/a 30' flatbed.

TRACTORS, COMBINE, SPRAYER, TRUCKS, TRAILERS

New Holland 8970 MFWD, SN-D418836, powered by 240 hp, 6-cyl. diesel, power shift transmission, 1000 shift-on-the-go pto, (4) sets dual remote hydraulic outlets, 16.9R30 front tires, 20.8R42 dual rear tires, 7380 hrs., inside rear wheel wts., super steer front end.

New Holland T6030 MFWD, SN-Z7BD04604, powered by 115 hp, 6-cyl. diesel, power shift, (3) sets dual remote hydraulic outlets, 380/85R30 front tires, 480/80R4Z rear tires, 6715 hrs., w/NH 840TL loader w/3rd function global hookup.

John Deere S660 combine, SN-CC0745923, 4x4, 520/85R42 duals, 28L-26 rears, lateral tilt feeder house, manual fold bin extension, 2037 engine hrs., 1367 separator hrs.,

90% of hrs. put on by Mr. Hardwick.

John Deere 608C, 8-row, 30" corn head, SN-JCX746066.

John Deere 625F hydra flex header, w/ Crazy Air system, SN=CC0745500
(2) **Killbros UT 125** header carts.

John Deere 4730, SN-XJD0028050, 800 gal. poly tank, 90' booms, hydraulic tread adjustment, 380/90R46 tires, w/JD 2630 display & Star Fire 3000 receiver, boom trac, auto trac, section control, stainless steel inductor 5-way nozzle bodies, 2121 hrs., one operator.

2004 **Kenworth T300**, 10-wheeler dump truck, Cat 3126 6-cyl. diesel, 8-speed transmission, air brakes, live tandem, west coast mirrors, 22.5 Budds, 56 gal. aluminum fuel tank, 20' body w/5' sides, 236" wheel base, Reyco suspension, 190,692 miles, sells w/salvage title, cab was replaced due to fire while sitting under shed.

2003 **Kenworth T300**, 10-wheeler dump truck, Cat 3126 diesel, 8-speed transmission, air brakes, live tandem, west coast mirrors, 22.5 tires, 56 gal. aluminum tank, 20' body w/5' sides, 236" wheel base, Reyco suspension, 42289 miles.

1986 **Chevrolet**, 8-cyl. gas, 5-speed w/2-speed rear axles, air brakes, west coast mirrors, 22.5 Spokes, 21' steel flatbed w/ 4 1/2' cage to hold chemical jugs,

live tandem - a 1st for E.B., Hendrickson suspension, 122,165 miles.

1990 **Chamberlin 48' x 96'** possum belly livestock trailer, 22.5 Budds, doghouse, top & bottom nose, left hand roll up loading gate, dividing gates in top middle & belly, approx. 75% treads on floor, has deck boards for 3rd deck, can be used for hogs, sheep, or cattle. 2009 **Swartz 30' x 101'**, dual tandem gooseneck flatbed, 2 5/16" hitch, 16" tires, 25' + 5' dove tail, w/ramps & pop-up center.

Hopper 24 1/2' x 96" dual tandem flatbed, 3" ball, 9.50-16.5 tires, 20' + 4 1/2' dove tail, w/ramps.

Highway 45' x 96' semi-flatbed, tandem axle, 10:00-20 tires, steel floor w/4' headboard – been sitting a while.

15' x 7 1/2' all steel flatbed, tandem axle, 14.5 tires, pin hitch.

TILLAGE & PLANTING EQUIPMENT, APPLICATORS

Massey Ferguson 580, 25 1/2', 68-blade disc, 9" spacing, tandem wheels, rock flex, trailer-type, all blades original except 5.

John Deere Killefer #424-07, 14-blade disc, 9" spacing, 3-pt.

Unverferth 8-row ripper/stripper, hydraulic fold, 30" spacing, hydraulic fold row makers, auto reset shanks, w/ rolling baskets, 3-pt.

KMC/Phillips 45' hydraulic fold rolling harrow, pull type.

John Deere 1750 Conservation 8-row vacuum planter, no-till coulters, hydraulic row markers, dry fertilizer, Keeton seed firmers, MaxEmerge Plus row units, pull type, set on 30" rows.

Great Plains Solid Stand 2000 grain drill, 20' w/Great Plains center hitch 2000 coulters cart.

12,000 gal. aluminum nitrogen tank. **Agri-Craft 7-ton** fertilizer tender w/ Kohler engine.

Agri-Craft FL6 fertilizer spreader, 540 pto hydraulic driven, hi-flotation tires, single spinner, 18" chain.

Johnson 1000 gal. fiberglass nurse tank, on tandem axle carrier, 16" tires, 2 5/16 ball hitch.
3500 gal. horizontal white poly nurse tank w/bows.
1700 gal. poly nurse tank.
300 gal. front mount tank, last on MF 8270.

HAY EQUIPMENT & EQUIPMENT

Kuhn F6 353G discbine w/impellers, 12' cut, 1000 pto, 2-pt hitch.
Kuhn F6 303 GL discbine w/impellers, 10' cut, 540 pto, 2-pt. hitch.
John Deere 702, 8-wheel finger tines V rake, pull type.
(2) **New Holland BR7060** round baler, 540 pto, twine tie, SN-YAN044086, YCN-175522.
Speed King 160 bu. Seed tender w/Honda engine, 6" belt conveyor, mounted on tandem axle carrier, 16" tires, 2 5/16 ball hitch.
Killbros 590 grain cart, carrier auger, 1000 pto.
John Deere HX15 rotary cutter, w/stump jumper, chain guards, 540 pto.
Hardee H-360-10 ditch bank mower, hydraulic slide, 540 pto, 3-pt.
Reddick inline ditcher, 540 pto, 3-pt.
4000 gal. fuel tank w/electric pump.
(2) **280 gal. portable fuel tanks** w/battery operated pump, 2" ball hitch.
John Deere 7' loader bucket, global style hookup.
PTO winch w/hydraulic 82" blade, made from Timberjack skidder, 3-pt.
Loader forks.
6½' loader bucket w/grapple. Last on NH 840TL
Round bale squeeze Last on NH 840TL
(7) **Lick tanks**, (3) w/4-wheel, (4) w/2-wheels.
Stone calf jack, walks 1 leg 1" & then the other way.
Galvanized corral panels w/extra bar, jimmy proof, easy hook up system – (5) 12' 6-bar, (2) 16' 2-bar, (1) 12' 7-bar, (5) 16' 7-ba.
Bull proof mineral feeders.

All poly round baler feeder.
Livestock gates, various lengths.
Behlen 10' metal cattle feed trough, nice
Behlen 10' poly feed trough.
(8) **14.5 tires** mounted on 6-hole implement rims.

AUCTIONEER'S NOTE

John has been farming since 1958 raising livestock & grain & it has been good to his family. He has decided to retire & have a complete dispersal of his equipment. His son, David, has decided to do the same. These two have put the bulk of the hours on this equipment. Most of the equipment has been shed kept & maintained by David who is an excellent mechanic. Be Here Sale Day & it all sells @ auction.

2ND AUCTIONEER'S NOTE

We are planning an auction later in the year for the 200 Angus bred commercial cow herd & the remaining equipment that is used in the cattle operation such as feed mills, trucks, trailers, tractors & working equipment. Send us your e-mail or address, we will keep you posted on date, time & location.

For more info call John Hardin @ 910-840-0887 or David @ 910-641-7832

Weather Note: If there is inclement weather, we will have a drive thru auction @ the cattle barn.

Bid in person on site or online @ebharris.com

Terms & Conditions: All purchases must be paid for sale day. All property sells as is where is with all faults, with absolutely no warranties implied or expressed in any way. All Serial Numbers, mileage & hrs. unverified. All info printed in brochure is believed to be correct but not guaranteed. The auction company reserves the right to offer property in separate sales, combinations thereof or as a whole.

Sales Tax Info – We are now required to charge NC Sale Tax at our sales. If you we do not have a completed sales tax exempt on file, you will be charged NC Sales Tax.



Want record making time? Put these (2) NH BR 7060 in the hay crop.



Time is of the essence – make sure -U- got the right spreader – Agri-Craft FL6



Sweeten the pot – they all have a good smell to E.B.



In the off season is the time to buy nitrogen – have a place to store.



Put down those seed bags & handle in bulk – it's a lot faster.



Got a good driver on both the combine & tractor saves time (even E.B. can do this).



It pays to rip land in dry & wet times – 8-row ripper/stripper.



With a 7-ton fertilizer tender, it's an efficient machine & the Hardwick's always kept under shed when not in use.



A little edgy about clipping, put your mind at ease w/a JD HX15 cutter.



JD 1750 no-till, set on 30", makes your crop yield to its full potential.

**HERE IS AN
OPPORTUNITY
TO ADD GOOD
EQUIPMENT TO
YOUR OPERATION**

"THE COMPLETE AUCTION SERVICE"
RETURN SERVICE REQUESTED

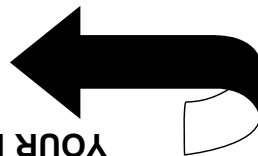
3200 NC Hwy. 58
Warrenton, NC 27589
NCAL 1468

Inc. / Auctioneers



FIRST CLASS MAIL

YOUR PERMANENT BUYER'S # IS HERE



**TIME SENSITIVE MATERIAL - DELIVER ON TIME!!
IN HOME 1-7 / 1-9**

Permanent Buyer's Note: When you receive this brochure in the mail, your permanent # appears above your name. Bring this brochure with you to the sale & you never have to register. Check your name & address to make sure we have it correct. If there are any changes or if you are receiving more than one brochure, advise us of the changes that need to be made.

**Presorted
First Class Mail
U.S. Postage
PAID
Permit No. 62
Macon, NC
27551**