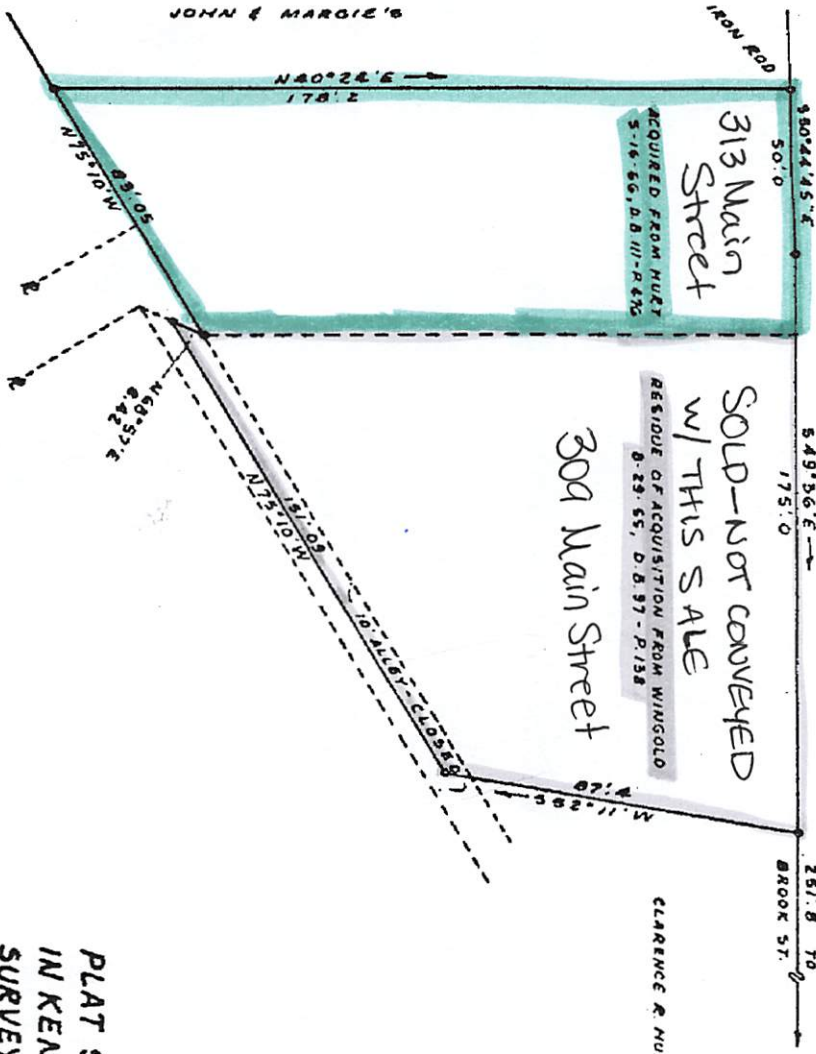


035A6 OA 0'25

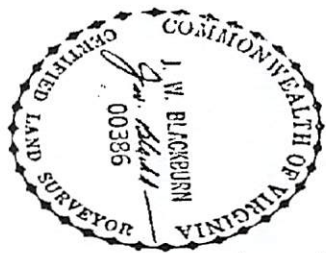
313 MAIN STREET (COFFEE'S EMBROIDERY)

MAIN ST. - RTE. NO. 40



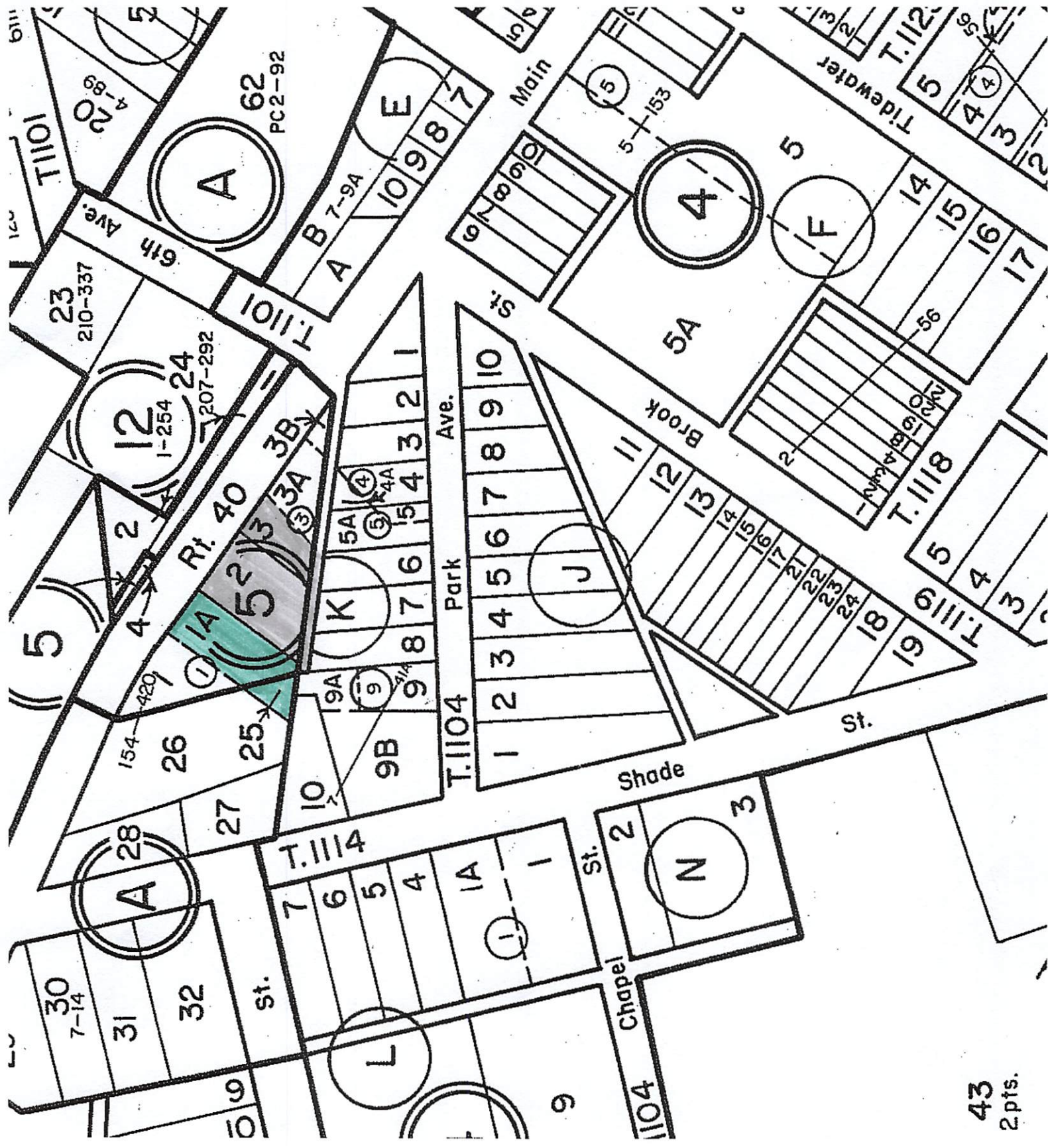
NOTE: COMPILED FROM MAPS BY J.W. BLACKBURN
 AND J.R. HUNNALLY, JR. DISTANCE ON
 MAIN STREET FIELD CHECKED.

PLAT SHOWING PARCEL OF LAND
 IN KENBRIDGE, LUNENBURG CO., VA.
 SURVEYED FOR HAZLEWOOD BROS.
 SCALE: 1" = 40'
 MAY 11, 1976



For deed of Cecil R. Hazelwood, et al
 to Vincent Daniel Hanesek, et al
 see Deed Book 129, pages 728

BY: BLACKBURN & BLACKBURN
 ENGINEERS-SURVEYING
 ROUTE 1, BOX 4
 KENBRIDGE, VA. 22944



43
2pts.