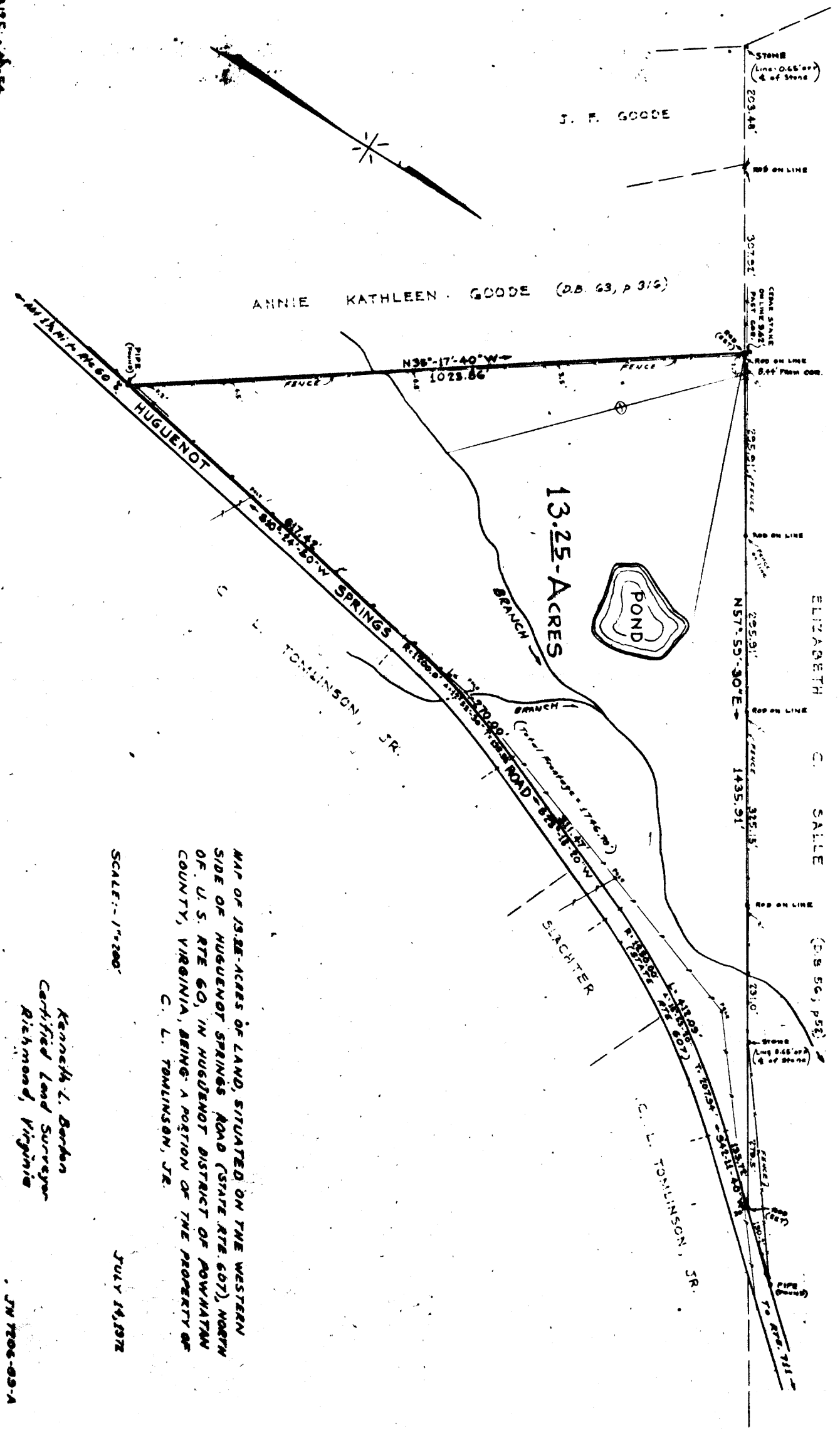
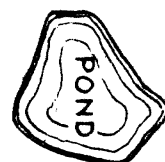


10125, 1015, 54



13.25-ACRES



MAP OF 13.25-ACRES OF LAND, SITUATED ON THE WESTERN
 SIDE OF HUGUENOT SPRINGS ROAD (STATE RTE. 607), NORTH
 OF U. S. RTE 60, IN HUGUENOT DISTRICT OF POWHATAN
 COUNTY, VIRGINIA, BEING A PORTION OF THE PROPERTY OF
 C. L. TOMLINSON, JR.

SCALE: 1"=200'

JULY 14, 1972

Kenneth L. Barber
 Certified Land Surveyor
 Richmond, Virginia

JN 7206-03-A