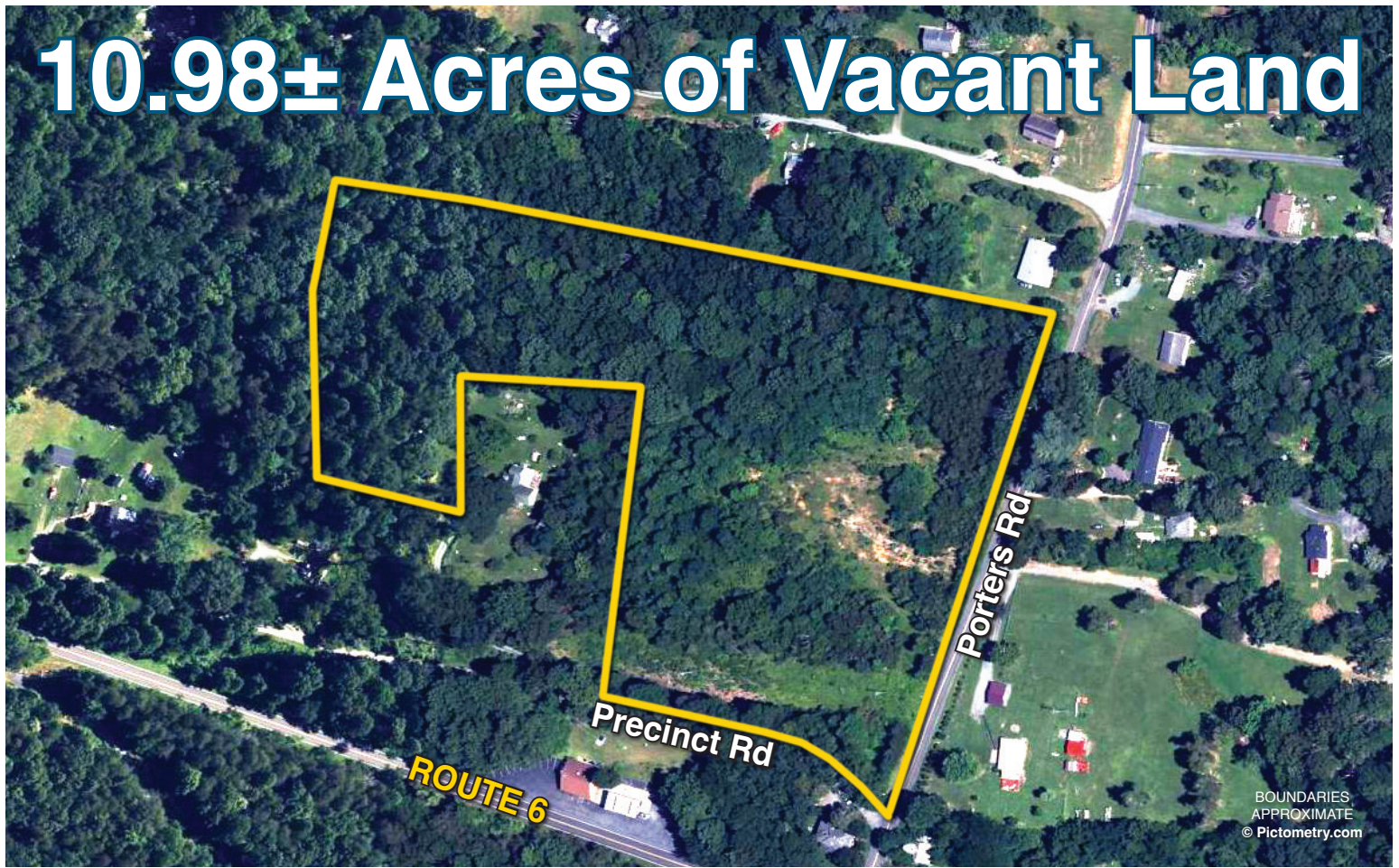


10.98± Acres of Vacant Land



BOUNDARIES
APPROXIMATE
© Pictometry.com

ABSOLUTE TRUSTEE AUCTION

Bid Off-Site: Friday, October 31 at 12pm

Auction will be held at Simpson Park, 2410 Simpson Park Dr., Esmont, VA 22937



Porters Rd. (Rt. 627) & Precinct Rd. Esmont, VA (Albemarle County)

This property is gently rolling with 699' of road frontage on Porters Road and about 500' of frontage on Precinct Road. The tax assessment is \$121,900.

Property Previews

Drive by inspections welcomed during daylight hours.



Realty & Auction Group

www.countsauction.com

(434) 525-2991

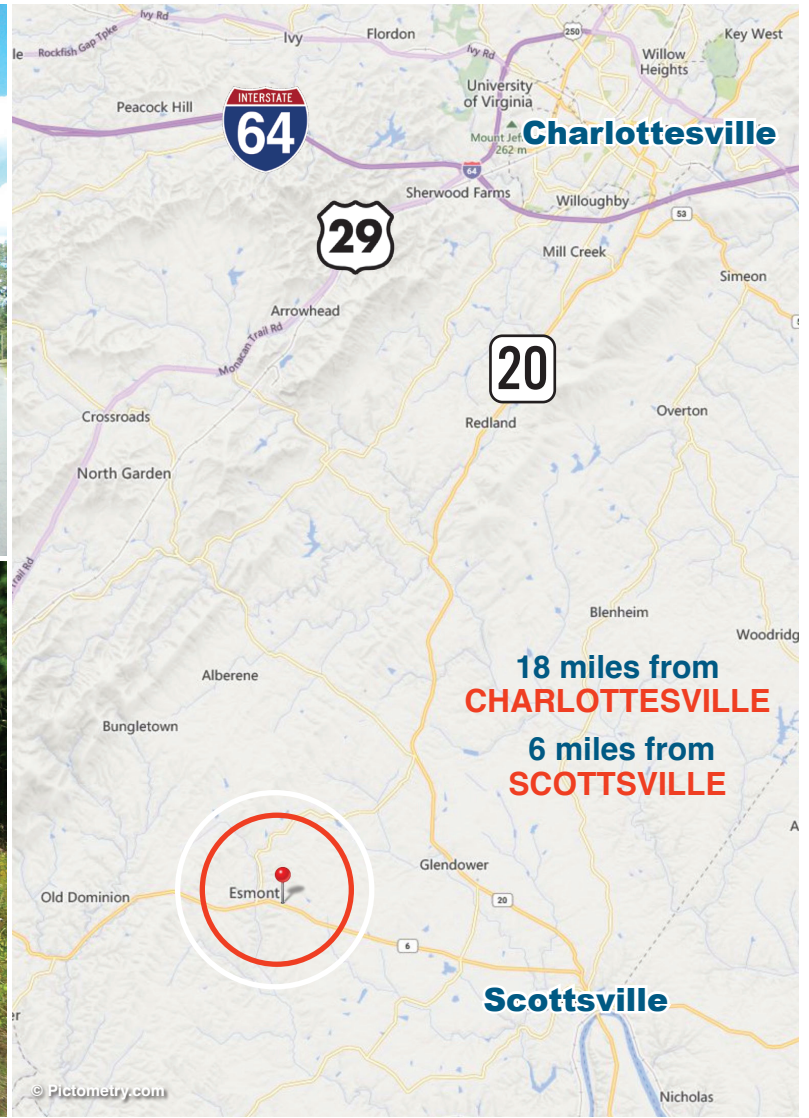
Sales Manager:
Pete Ramsey (434) 258-6611

10 % Buyer's Premium

A deposit of \$10,000 in certified funds is due on sale day with the balance due in 30 days.



VAAF93



ABSOLUTE TRUSTEE AUCTION

Bid Off-Site: Friday, October 31 at 12pm

Auction will be held at Simpson Park, 2410 Simpson Park Dr., Esmont, VA 22937



Auction Location: Simpson Park

This park is 0.3 miles from the property location on Porters Road. Go south on Porters Road across Rt 6 (Irish Road) for 0.3 miles. Turn right onto Simpson Park Drive. This is across the street from the Benjamin Franklin Yancey Elementary School.



Realty & Auction Group

www.countsauction.com

(434) 525-2991

VAAF93