



The L830C/LX830C series heavy duty, zero tail-swing feller bunchers are purpose-built for demanding thinning and final fell applications in steep terrain.

## BENEFITS AND ADVANTAGES:

### Powerful 300 hp Tier 3 engine

### Efficient high-capacity cooling system

- Automatic variable fan speed for improved fuel efficiency
- Automatic reversing cycle to easily clean the heat exchangers
- Cooling air is drawn from the rear, away from saw discharge

### Compact, zero tail-swing design with tight-tuck boom system for thinning applications

### Extremely stable with powerful lift capacity for high production final felling in tough terrain

### Tigercat-built extreme duty undercarriage

- Long track frames with wide stance for excellent stability
- Super-duty leveling system built with large pins and cylinders, tapered roller bearings and thick steel plate

### Excellent service access

- Tilt-out engine enclosure forms a spacious work platform

### Choice of open or closed loop track drive

- Closed loop track drive system offers quicker, higher performance tracking and increased hydraulic system efficiency when climbing, turning and multi-functioning

### Efficient, easy to operate ER boom system

- Tigercat's exclusive ER technology improves fuel efficiency and increases productivity, while reducing operator fatigue

### Highly durable design and construction

### Quiet, climate controlled operator's station

- High output heater/air conditioner with multiple vents
- Extreme duty air ride suspension seat
- Excellent visibility and clear view of the track tips



# SPECIFICATIONS

## L830C

## LX830C

### DIMENSIONS WITH STANDARD TRACK SHOE

WIDTH with steps	3 400 mm
LENGTH less boom	4 750 mm
HEIGHT less skylight	3 730 mm
GROUND CLEARANCE	760 mm
WEIGHT less head	34 700 kg
TAIL SWING over side	ø

3 400 mm
4 750 mm
3 730 mm
760 mm
34 700 kg
ø

### POWER

ENGINE	Cummins QSL9, 224 kW (300 hp) Tier 3 @ 1800 rpm Precleaner and 2-stage engine air cleaner
COOLING	Side-by-side radiator, oil cooler and charge air cooler Removable intake debris screen
FAN	Hydraulically driven, automatic variable speed, reversible
FUEL CAPACITY usable	530 L

Cummins QSL9, 224 kW (300 hp) Tier 3 @ 1800 rpm Precleaner and 2-stage engine air cleaner
Side-by-side radiator, oil cooler and charge air cooler Removable intake debris screen
Hydraulically driven, automatic variable speed, reversible
530 L

### HYDRAULIC SYSTEM

PUMP, MAIN	Piston
PUMP, TRACK	N/A
PUMP, BOOM/SWING	N/A
PUMP, SAW	Piston
PUMP, CLAMP/ACCUM. ARMS	Gear
PUMP, CLAMP/ACCUM. ARMS/WRIST	N/A
PUMP, COOLING FAN	Gear
RESERVOIR	165 L
FILTRATION	(6) Spin-on, 7 micron full flow
CYLINDER, HOIST	140 mm bore
CYLINDERS, STICK/ER	(2) 110 mm bore
CYLINDER, TILT	120 mm bore
Optional	130 mm bore
CYLINDERS, LEVELING	(2) 180 mm bore
HORSE POWER CONTROL	Electronic speed sensing; All-speed antistall

N/A
(2) Piston, closed circuit
Piston
Piston
N/A
Piston
Gear
165 L
(6) Spin-on, 7 micron full flow
140 mm bore
(2) 110 mm bore
120 mm bore
130 mm bore
(2) 180 mm bore
Electronic speed sensing; All-speed antistall

### UNDERCARRIAGE

TRACK FRAMES	R7-150L-2 super-duty leveling Integral track guides, ramp angles Removable full-length rock guards
TRACK CHAIN	FH400 215 mm pitch
FINAL DRIVE	(2) Axial piston motors; Infinitely variable speed
TRACTIVE EFFORT	367 kN
GEARBOX	Triple reduction planetary type with brake
FRONT IDLER	Hydraulic track adjuster; Spring shock absorber
SLIDES, UPPER	Replaceable, bolt-on
ROLLERS, LOWER	(9) FH400 single and double flange excavator type
TRACK SHOE	610 mm single grouser
Optional	710 mm double grouser
LEVELING	26° forward; 7° rear; +/-22° side

R7-150L-2 super-duty leveling Integral track guides, ramp angles Removable full-length rock guards
FH400 215 mm pitch
(2) Axial piston motors; Infinitely variable speed
367 kN
Triple reduction planetary type with brake
Hydraulic track adjuster; Spring shock absorber
Replaceable, bolt-on
(9) FH400 single and double flange excavator type
610 mm single grouser
710 mm double grouser
26° forward; 7° rear; +/-22° side

### TOP SPEED

LOW RANGE	1,4 km/h
HIGH RANGE	3,8 km/h

1,8 km/h
4,2 km/h

### BRAKES

TRACK	Friction disc; Automatic spring applied, hydraulic release
SWING	Friction disc; Manual spring applied, hydraulic release

Friction disc; Automatic spring applied, hydraulic release
Friction disc; Manual spring applied, hydraulic release

### ROTATING UPPER

SWING DRIVE	7 rpm variable speed; 360° continuous rotation Double reduction, swing drive planetary gearbox with brake; Piston swing motor 1,190 mm ball circle diameter Perforated plate on doors for ventilation Hydraulic operated engine enclosure Rear air intake for cooling system and engine Vandal protection; Smooth exterior
SWING BEARING	
ENCLOSURE	

7 rpm variable speed; 360° continuous rotation Double reduction, swing drive planetary gearbox with brake; Piston swing motor 1,190 mm ball circle diameter Perforated plate on doors for ventilation Hydraulic operated engine enclosure Rear air intake for cooling system and engine Vandal protection; Smooth exterior

### ER BOOM SYSTEM with 5400 saw; 30° wrist

MAXIMUM CUT RADIUS	8 380 mm
MINIMUM CUT RADIUS	3 250 mm
Bare PIN LIFT full reach	5 240 kg

8 380 mm
3 250 mm
5 240 kg

## SPECIFICATIONS

## L830C

## LX830C

### OPERATOR'S STATION

CAB	Insulated, pressurized and isolation mounted A/C, heater, defroster with side-mount controls; Skylight or flat hatch Full length polycarbonate windshield/entry door; Polycarbonate right-side and rear windows; Tempered glass side-door window
CONTROLS	High visibility machine monitoring system with warning horns; AM/FM digital stereo with CD player; (2) Power points Hydraulic proportional boom/travel/swing; Electronic for clamp arms/wrist/leveling Electric switch for accumulating arms/swing brake/speed range
SEAT	Electronic control system with colour LCD display screen for machine monitoring and function adjustment Full suspension air ride, fully adjustable with angled mounting; Armrest mounted Tigercat joysticks

### ELECTRICAL

BATTERY	(2) 12 v	(2) 12 v
ALTERNATOR	110 amp, 24 v	110 amp, 24 v
SYSTEM VOLTAGE	24 v	24 v
LIGHTING	(9) Halogen; (3) Service lights, engine enclosure	(9) Halogen; (3) Service lights, engine enclosure
Optional	(7) HID; (1) Halogen; (3) Service lights, engine enclosure	(7) HID; (1) Halogen; (3) Service lights, engine enclosure

### OTHER STANDARD EQUIPMENT

Fuel suction strainer; Cold weather kit	Fuel suction strainer; Cold weather kit
Alarm for track movement	Alarm for track movement
Bottom level fueling system	Bottom level fueling system

### OPTIONAL EQUIPMENT

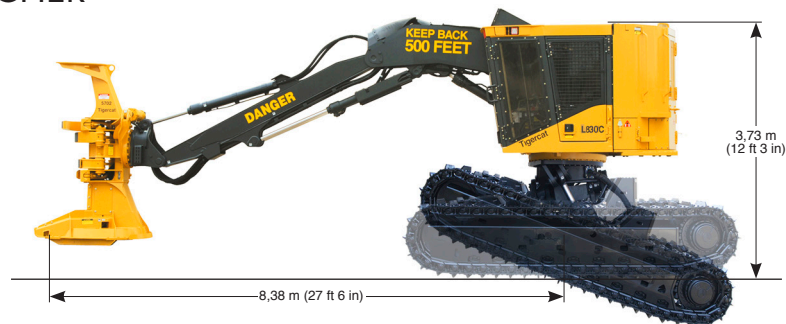
Bolt-on toolbox; Power-link	Bolt-on toolbox; Power-link
High rotation wrists: 110°, 340°	High rotation wrists: 110°, 340°

### FELLING HEAD

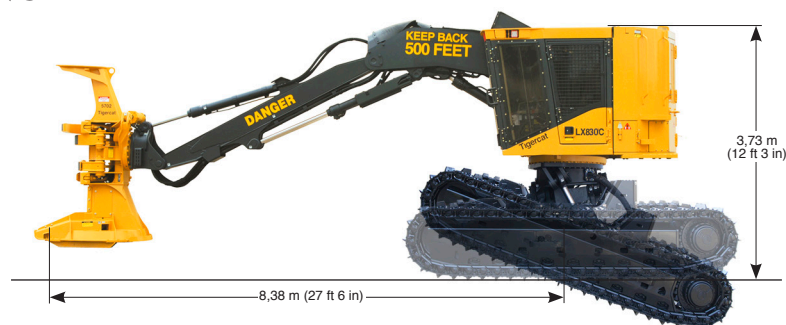
Flexible hydraulic system to accept various felling heads	Flexible hydraulic system to accept various felling heads
-----------------------------------------------------------	-----------------------------------------------------------

TIGERCAT RESERVES THE RIGHT TO AMEND THESE SPECIFICATIONS AT ANY TIME WITHOUT NOTICE

## L830C FELLER BUNCHER



## LX830C FELLER BUNCHER







*Super-duty leveling system constructed with thick steel plate, massive pins and cylinders.*



*R7-150L-2 Tigercat FH400 undercarriage with long track frames and wide stance for excellent stability on slopes.*



*ER boom technology for increased productivity and efficiency; Reduced operator fatigue.*



*Excellent access to both sides of the engine.*



*Clear access to the pumps; Cooling air is drawn from the rear, away from the saw discharge area.*



*Easy access to daily service points with hydraulically retracting engine hood enclosure.*

© 2001 - 2016 Tigercat International Inc. All Rights Reserved. TIGERCAT, WIDERANGE, TURNAROUND, ER, EHS, and TEC, their respective logos, TOUGH RELIABLE PRODUCTIVE, TIGERCAT TV, "Tigercat Orange" and BETWEEN THE BRANCHES, as well as corporate and product identity, are trademarks of Tigercat International Inc., and may not be used without permission. TIGERCAT, TURNAROUND, WIDERANGE and ER, and their respective logos are registered trademarks of Tigercat International Inc.

54 Morton Ave. East  
Brantford, Ontario  
Canada, N3R 7J7  
Mail: Box 637 N3T 5P9

L830C/LX830C 1.1 0116

E-mail: [comments@tigercat.com](mailto:comments@tigercat.com)  
Internet: [www.tigercat.com](http://www.tigercat.com)  
Tel: (519) 753-2000  
Fax: (519) 753-8272

**Tigercat®**