

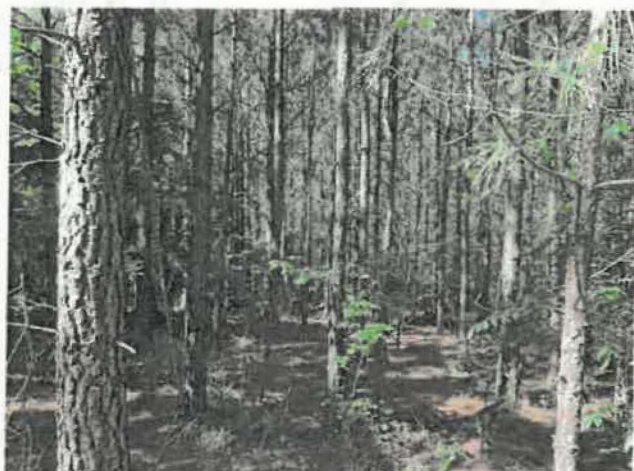


FOR SALE

\$599,000



258.81+/- ACRES PLANTED PINE PLANTATION
Lapsley Run Timber Farm



SALES MANAGER:
GEORGE MCDANIEL 434.546.9235 OR
PETE RAMSEY 434.258.6611

Realty & Auction Group

VAAF93 | 828 Main St 15th Floor, Lynchburg VA 24504



**258.81+/- ACRES
PLANTED PINE PLANTATION**

FOR SALE

PROPERTY (GPS) ADDRESS: 5616 WEST GRETN RD GRETN VA

Lapsley Run Timber Farm a 258.81+/- Acre Planted Pine Planation

258.81-acre planted pine plantation, featuring a diverse range of pines aged from 10 to over 20 years. Many areas of the plantation are ready for thinning, making it an excellent investment opportunity for timber enthusiasts. While the property does not have direct road frontage, it is conveniently accessible via two deeded access points. For more detailed information, please visit our website.

Directions: From the intersection of Rt 29 and Rt 40 in Gretna, travel 4.5 miles west on Rt 40 (West Gretna Rd). The access point to the property will be on the right. Look for the auction sign.



**SALES MANAGER:
GEORGE MCDANIEL 434.546.9235 OR
PETE RAMSEY 434.258.6611**



VAAF93 | 828 Main St 15th Floor, Lynchburg VA 24504