

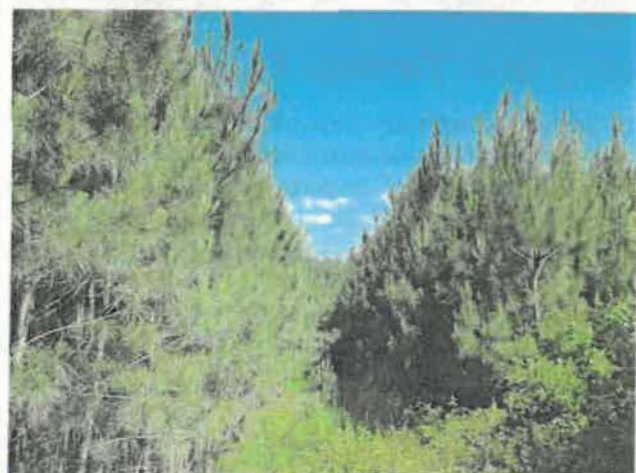


# FOR SALE

## \$675,000



**258.81+/- ACRES PLANTED PINE PLANTATION**  
**Lapsley Run Timber Farm**



**SALES MANAGER:**  
**GEORGE MCDANIEL 434.546.9235 OR**  
**PETE RAMSEY 434.258.6611**

Realty & Auction Group

VAAF93 | 828 Main St 15th Floor, Lynchburg VA 24504



258.81+/- ACRES  
PLANTED PINE PLANTATION

**FOR SALE**

PROPERTY (GPS) ADDRESS: 5616 WEST GRETN RD GRETN VA

**Lapsley Run Timber Farm a 258.81+/- Acre Planted Pine Planation**

258.81-acre planted pine plantation, featuring a diverse range of pines aged from 10 to over 20 years. Many areas of the plantation are ready for thinning, making it an excellent investment opportunity for timber enthusiasts. While the property does not have direct road frontage, it is conveniently accessible via two deeded access points. For more detailed information, please visit our website.

Directions: From the intersection of Rt 29 and Rt 40 in Gretna, travel 4.5 miles west on Rt 40 (West Gretna Rd). The access point to the property will be on the right. Look for the auction sign.



**SALES MANAGER:**  
**GEORGE MCDANIEL 434.546.9235 OR**  
**PETE RAMSEY 434.258.6611**



Realty & Auction Group

VAAF93 | 828 Main St 15th Floor, Lynchburg VA 24504