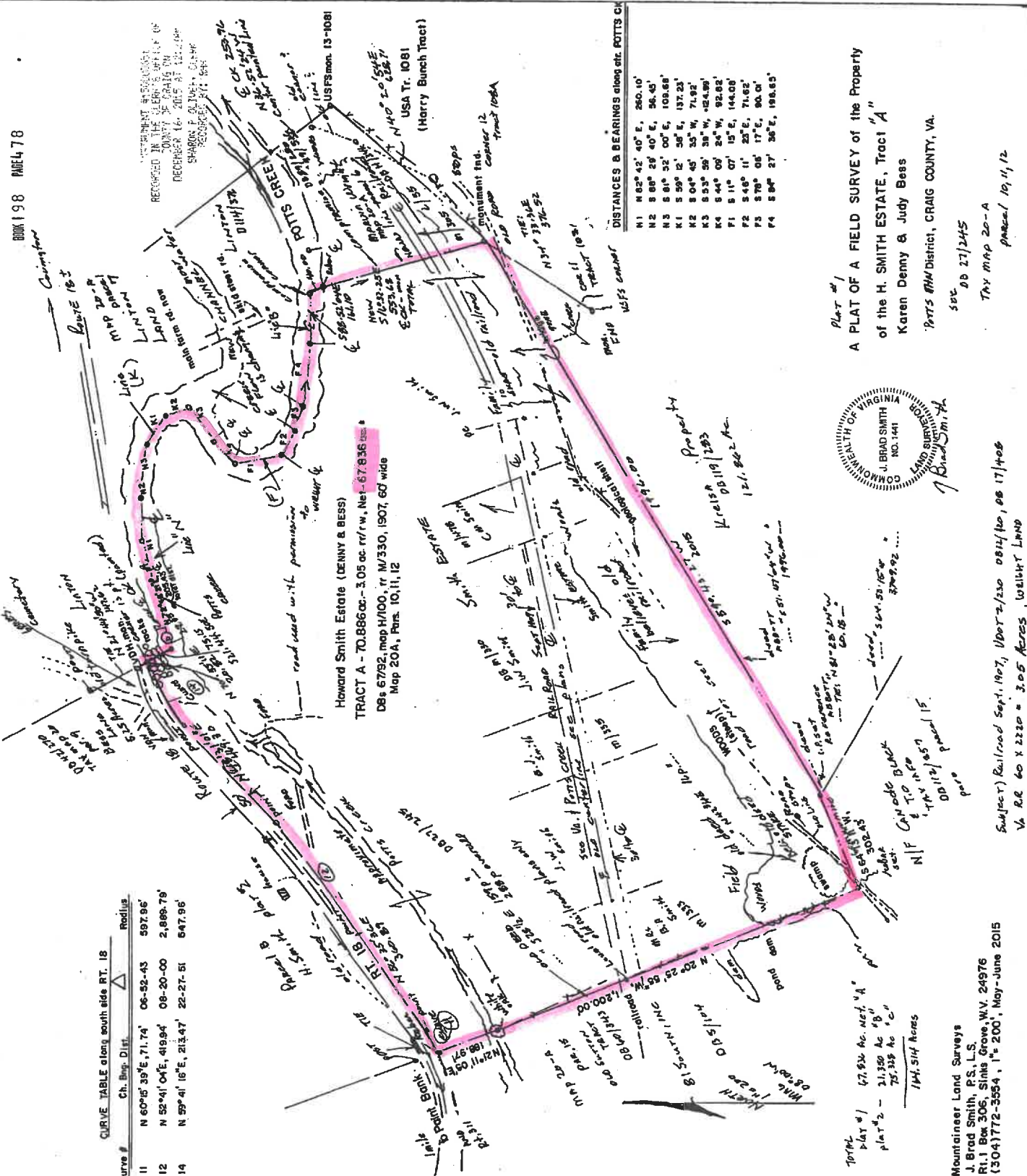


TRACT 1 - 67.836 ACRES

RECORDED IN THE CLERK'S OFFICE OF
COUNTY OF CRAIG, VA.
DECEMBER 16, 2015 AT 12:22 PM
SHARON F. OLIVER, CLERK
RECORDED BY: 688



DISTANCES & BEARINGS along etc. POTTS CR

N1	N 62° 42' 40" E, 260.10'
N2	S 80° 29' 40" E, 96.45'
N3	S 81° 32' 00" E, 109.68'
X1	S 59° 12' 58" E, 137.23'
N2	S 04° 05' 35" W, 71.92'
N3	S 33° 25' 38" W, 42.489'
N4	S 44° 00' 24" W, 92.02'
F1	S 11° 07' 15" E, 144.08'
F2	S 46° 11' 23" E, 71.62'
F3	S 70° 05' 17" E, 94.04'
F4	S 84° 27' 36" E, 108.65'

PLAT #1
A PLAT OF A FIELD SURVEY of the Property
of the H. SMITH ESTATE, Tract "A"
Karen Denny & Judy Bess
POTTS R/W District, CRAIG COUNTY, VA.
SVC. 08 27/245
TRV MAP 20-A
parcel 19, 11, 12



Subject: Railroad Sept. 1907, UPR 2/230 0812/ho, 08 17/406
V.R. 60 X 2220 = 3.05 Acres, 108147 Land

Mountaineer Land Surveys
J. Brad Smith, P.S., L.S.
Rt. 1 Box 305, Shiloh Grove, W.V. 24976
(304) 772-3554, 1" = 200', May-June 2015

CURVE TABLE along south side RT. 19

Curve #	Ch. Bng. Dist.	Radius
11	N 60° 16' 39" E, 71.74'	597.96'
12	N 52° 41' 04" E, 419.94'	2,889.79'
14	N 59° 41' 16" E, 213.47'	547.96'

TRACT 2 - 21.350 ACRES

TRACT 3 - 75.328 ACRES

INVESTMENT #15000051
RECORDED IN THE PUBLIC RECORDS OF
DECEMBER 14, 1975 AT 12:22 PM
SHARON PALMER, CLERK
RECORDED BY: RRS

Stephen Linton
20A/7, 27 ac.
DB 114/376

DISTANCES & BNGS. @ Curve Inclusions RT 311, Plat B
Curve: S 37°35' 52" W, 116.66', Δ 20-54-22, R- 321.60' (100)

- Line 1 S 27° 08' 42" W, 179.30'
- 2 S 40° 39' 36" W, 42.79'
- 3 S 41° 10' 42" W, 103.08'
- 4 S 15° 05' 13" W, 105.43'
- 5 S 45° 40' 52" W, 72.35'
- 6 S 56° 22' 08" W, 88.28'
- 7 N 87° 08' 04" W, 170.01'

Howard Smith Estate
Map 20A, Pars. 10, 11, 12
DBs 27/245, H/346
Parcel C, 75.328 Ac.

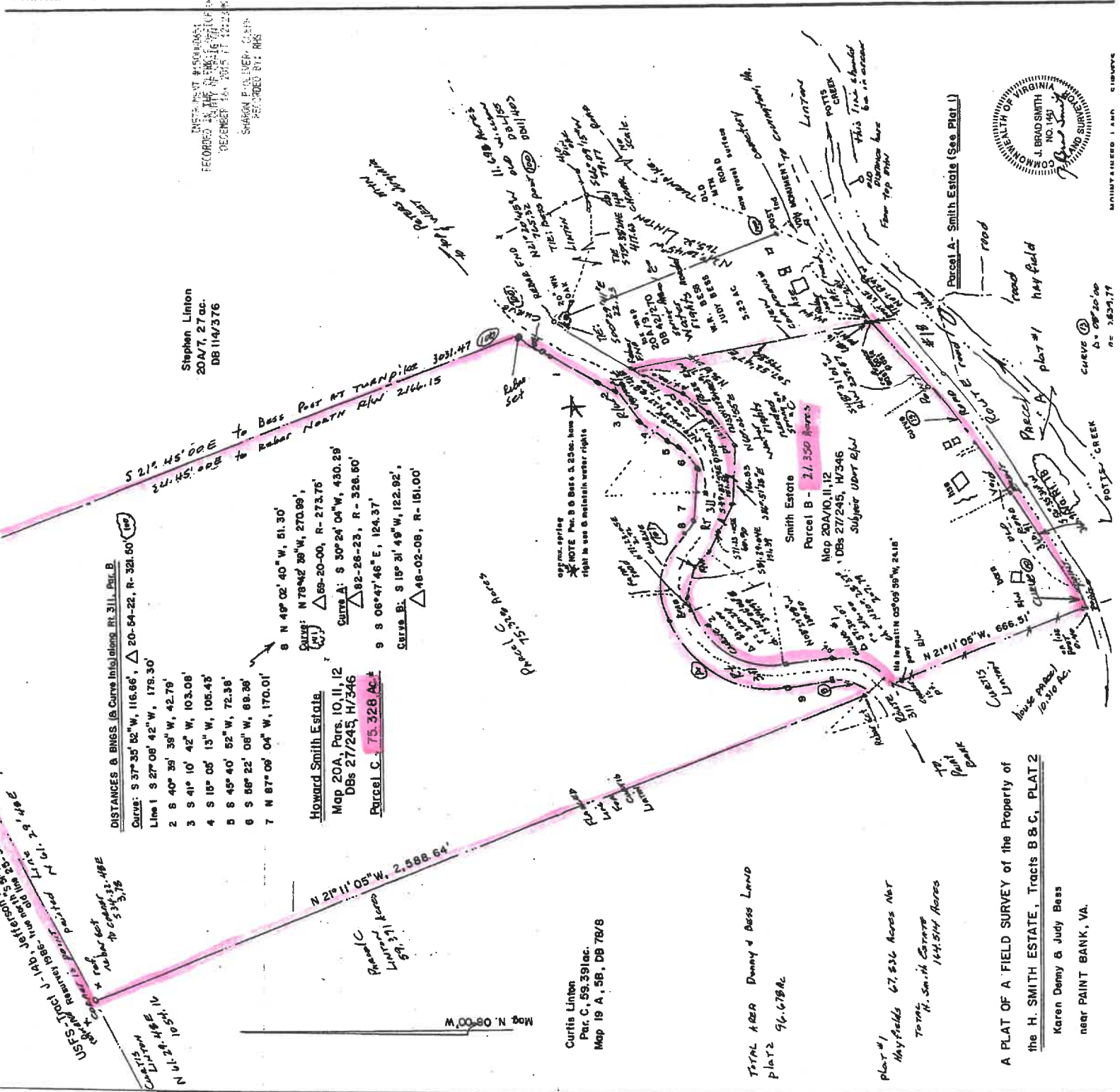
- 8 N 48° 02' 40" W, 51.30'
- Curve: N 79°42' 36" W, 270.98', Δ 69-20-00, R- 273.76'
- Curve A: S 30°24' 04" W, 430.28', Δ 82-26-23, R- 328.50'
- 9 S 06°47' 46" E, 124.37'
- Curve B: S 15° 31' 49" W, 122.92', Δ 48-02-08, R- 151.00'

Curtis Linton
Par. C, 59.391 ac.
Map 19 A, 5B, DB 78/8

TOTAL AREA Denny & Bass Land
PLAT 2 96.678 ac.

PLAT #1
Hayfields 67,536 Acres Net
Total H. Smith Estate 144,514 Acres

A PLAT OF A FIELD SURVEY OF THE PROPERTY OF
the H. SMITH ESTATE, Tracts B & C, PLAT 2
Karen Denny & Judy Beas
near PAINT BANK, VA.



USFS - Tract 1-14B differs from the original plat by 1.0541 ac. (105.41%)
USFS - Tract 1-14B differs from the original plat by 5.3433 ac. (534.33%)
USFS - Tract 1-14B differs from the original plat by 5.3433 ac. (534.33%)
USFS - Tract 1-14B differs from the original plat by 5.3433 ac. (534.33%)