



# ABSOLUTE AUCTION

*Leesville Rd Lynchburg VA*

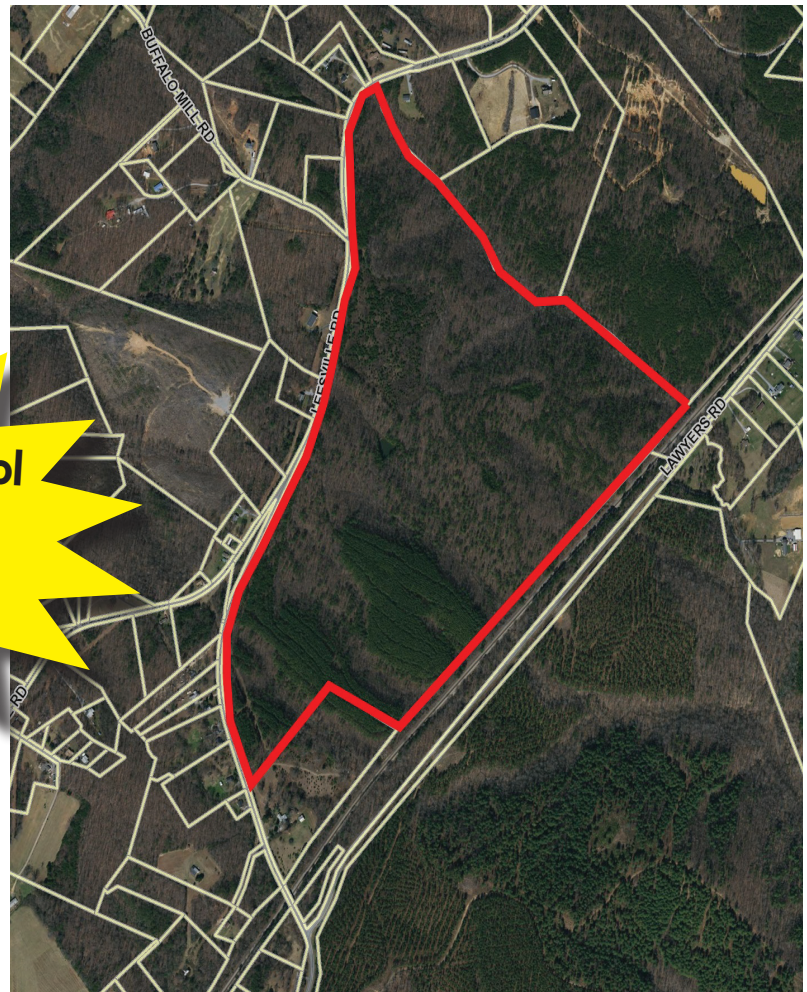
## FRIDAY AUGUST 26TH @ 12PM

Previews : Friday 8/5 and Friday 8/12 12PM to 1PM

**Auction Location:** Moose Lodge #1727, 934 Waterlick Rd Lynchburg VA

**152± ACRES IN 7 LOTS  
LOTS RANGING FROM  
20 TO 27 ACRES**

**Brookville School District  
Minutes to the Airport and LU!**



## THE AUCTION'S ON!

**Auction Manager: George McDaniel 434-546-9235 or  
Bill Bryant 434-525-2991**

VAAF93

[WWW.COUNTSAUCTION.COM](http://WWW.COUNTSAUCTION.COM)

828 Main St, Floor 15, Lynchburg VA 24504 | 434-525-2991

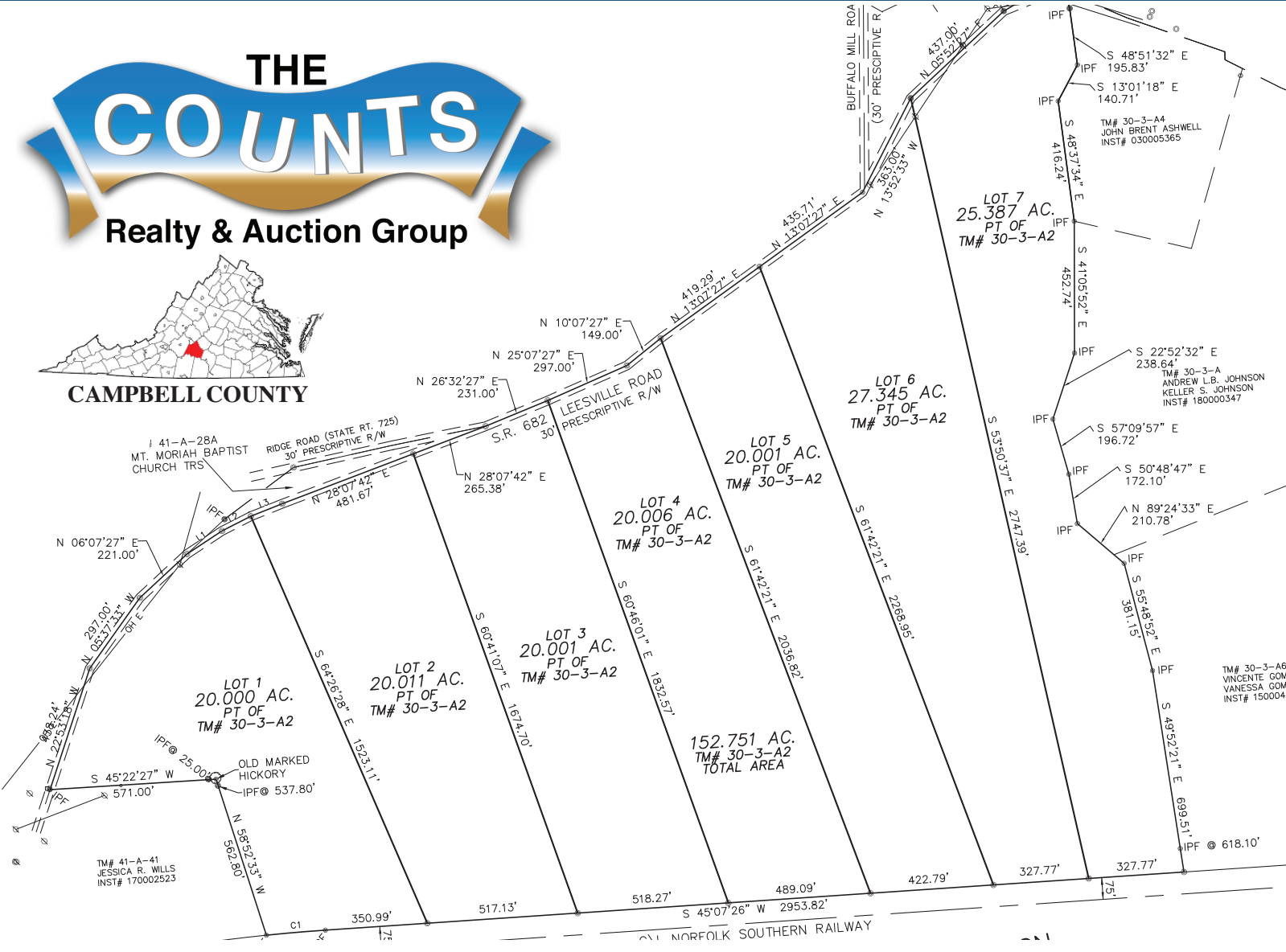
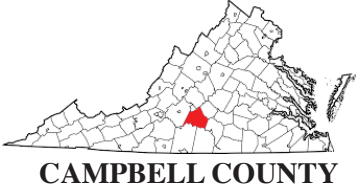


# AUCTION

152± Acres on Leesville Rd

Divided into 7 Lots : Ranging from 20 to 27 Acre lots

FRIDAY AUGUST 26TH @ 12PM



**152± Acres divided into 7 lots. The the range from 20 to 27 acres**  
**Approximately 4,700' of frontage along Leesville Rd**  
**Zoned Agricultural**  
**County water located across the road from Lot 7**  
**Close to Lynchburg Airport, LU, and shopping.**

Property Location : Leesville Rd, Lynchburg VA

Auction Location : Moose Lodge#1727, 934 Waterlick Rd, Lynchburg VA

Sales Managers: George McDaniel 434-546-9235 or Bill Bryant 434-525-2991

Additional Information available on our website, [www.countsauction.com](http://www.countsauction.com)



VAAF93

[WWW.COUNTSAUCTION.COM](http://WWW.COUNTSAUCTION.COM)

828 Main St, Floor 15, Lynchburg VA 24504 | 434-525-2991



# AUCTION 152± ACRES ON LEESVILLE RD

Divided into 7 Lots : Ranging from 20 to 27 Acre lots

## FRIDAY AUGUST 26TH @ 12PM



**Terms:** 10% Buyer's Premium added to the high bid to determine the final sales price. A 10% deposit is due on the day of the sale. Closing in 30 days. This is an Absolute Auction, and the property is being sold As-Is Where-Is. All Auction Day announcements take precedence over any previously advertised or published information.

**Directions:** From Lynchburg Regional Airport head west on US460W, take the Leesville Rd (Co Rd 683) exit, and follow Leesville Rd for ~6.2 miles. Watch for signs

From Liberty University: Head Southwest on US29, exit South toward Danville (go past Comfort Inn & Suites at the airport) travel ` 7 miles, Turn right onto VA-24 West, travel ~ 5.6, look for Leesville Rd on your Right.

**Sales Managers : George McDaniel 434-546-9235 or Bill Bryant 434-525-2991**

**Additional Information** available on our website, [www.countstsauction.com](http://www.countstsauction.com)

VAAF93

**WWW.COUNTSAUCTION.COM**

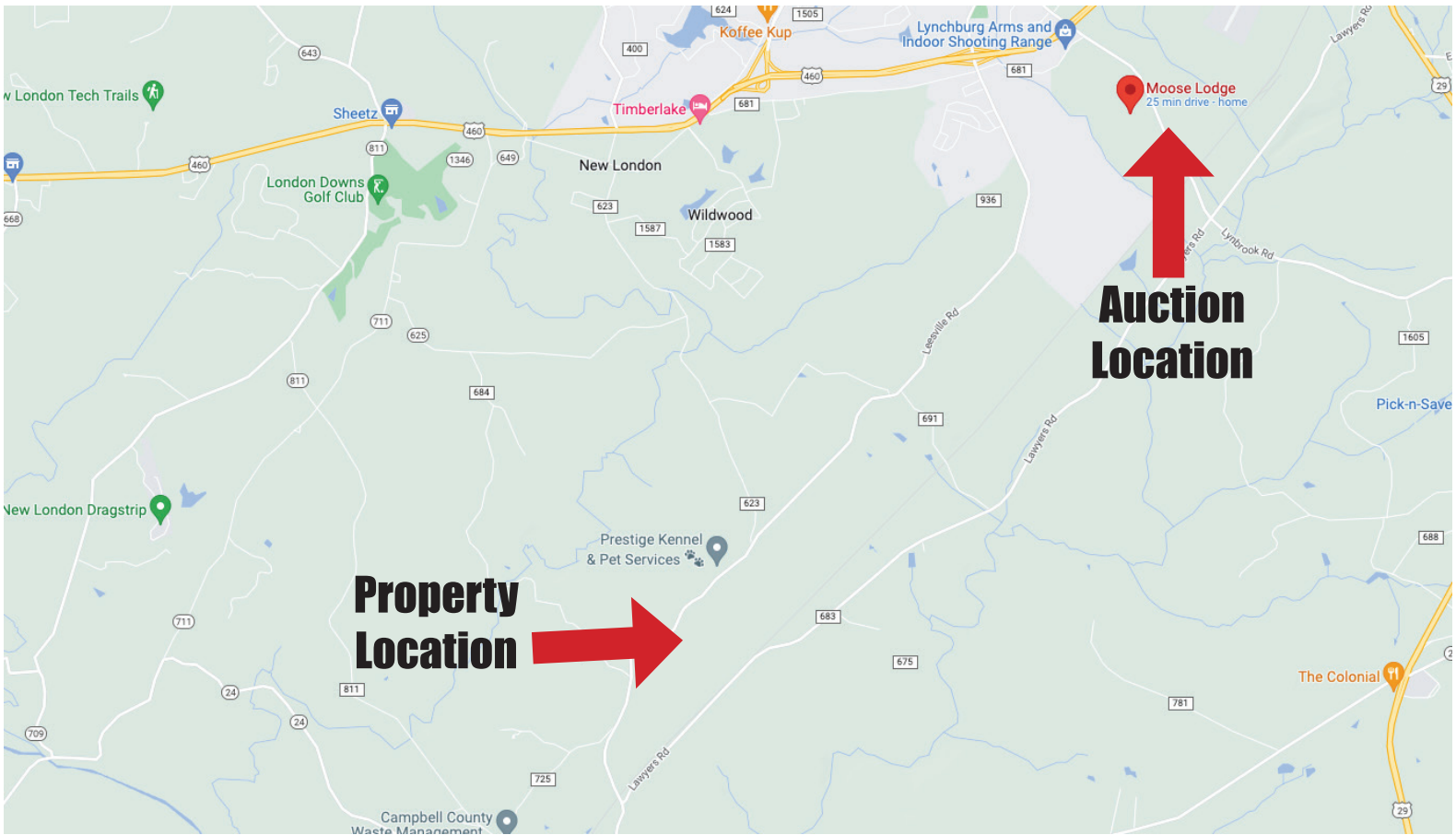
828 Main St, Floor 15, Lynchburg VA 24504 | 434-525-2991



# AUCTION 152± ACRES ON LEESVILLE RD

Divided into 7 Lots : Ranging from 20 to 27 Acre lots

## FRIDAY AUGUST 26TH @ 12PM



VAAF93

[WWW.COUNTSAUCTION.COM](http://WWW.COUNTSAUCTION.COM)

828 Main St, Floor 15, Lynchburg VA 24504 | 434-525-2991

