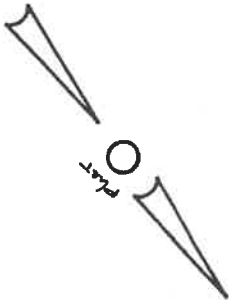


TRACTS 1 & 2 SHOULD HEREIN ACQUIRED BY JILL L. WEBER IN DB. 858, P. 151.

ACCORDING TO H.U.D. FLOOD MAP PANEL # S10013 0008 A TRACTS 1 & 2 ARE NOT IN A DESIGNATED FLOOD ZONE.



HUNTER  
DB. 666, P. 342

PHYSICAL SURVEY

JILL L. WEBER PROPERTY  
BEVERLEY MANOR DISTRICT  
AUGUSTA COUNTY, VIRGINIA

SCALE 1" = 100'

L. W. KNIGHTING, P.C. STAUNTON, VIRGINIA

U. S. ROUTE 11



BUSINESS RECORDS CORPORATION

HUNTER  
DB. 666, P. 342.

S 46° 11' 00" E 76.33'

S 1° 20' 45" E 54.64'

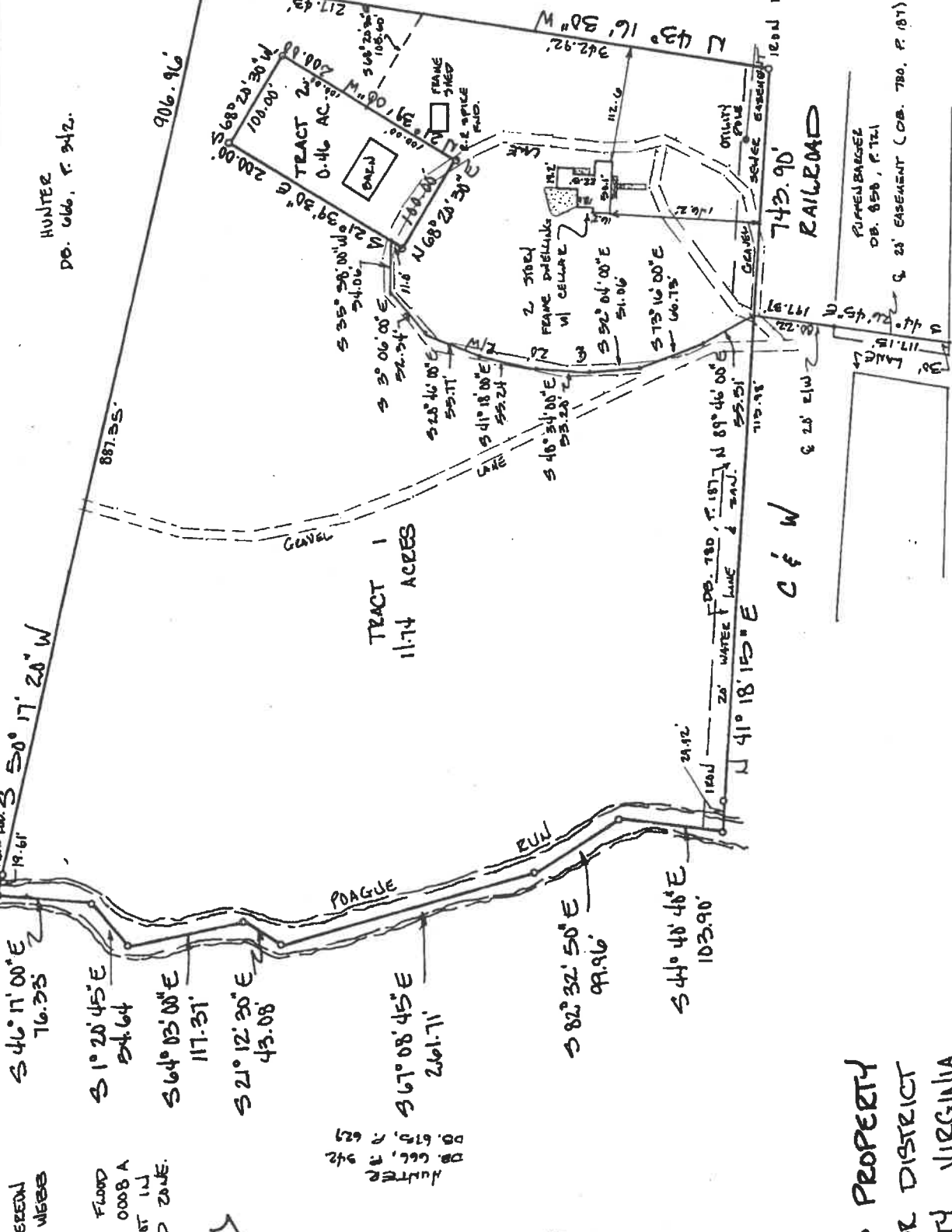
S 64° 03' 00" E 117.31'

S 21° 12' 30" E 43.08'

S 67° 08' 45" E 261.71'

S 82° 32' 50" E 99.96'

S 41° 40' 40" E 103.90'



HUNTER  
DB. 666, P. 342

U. S. ROUTE 11

RAILROAD

POAGUE

ZULL

TRACT 1  
11.74 ACRES

TRACT 2  
0.46 AC.

HUNTER  
DB. 666, P. 342