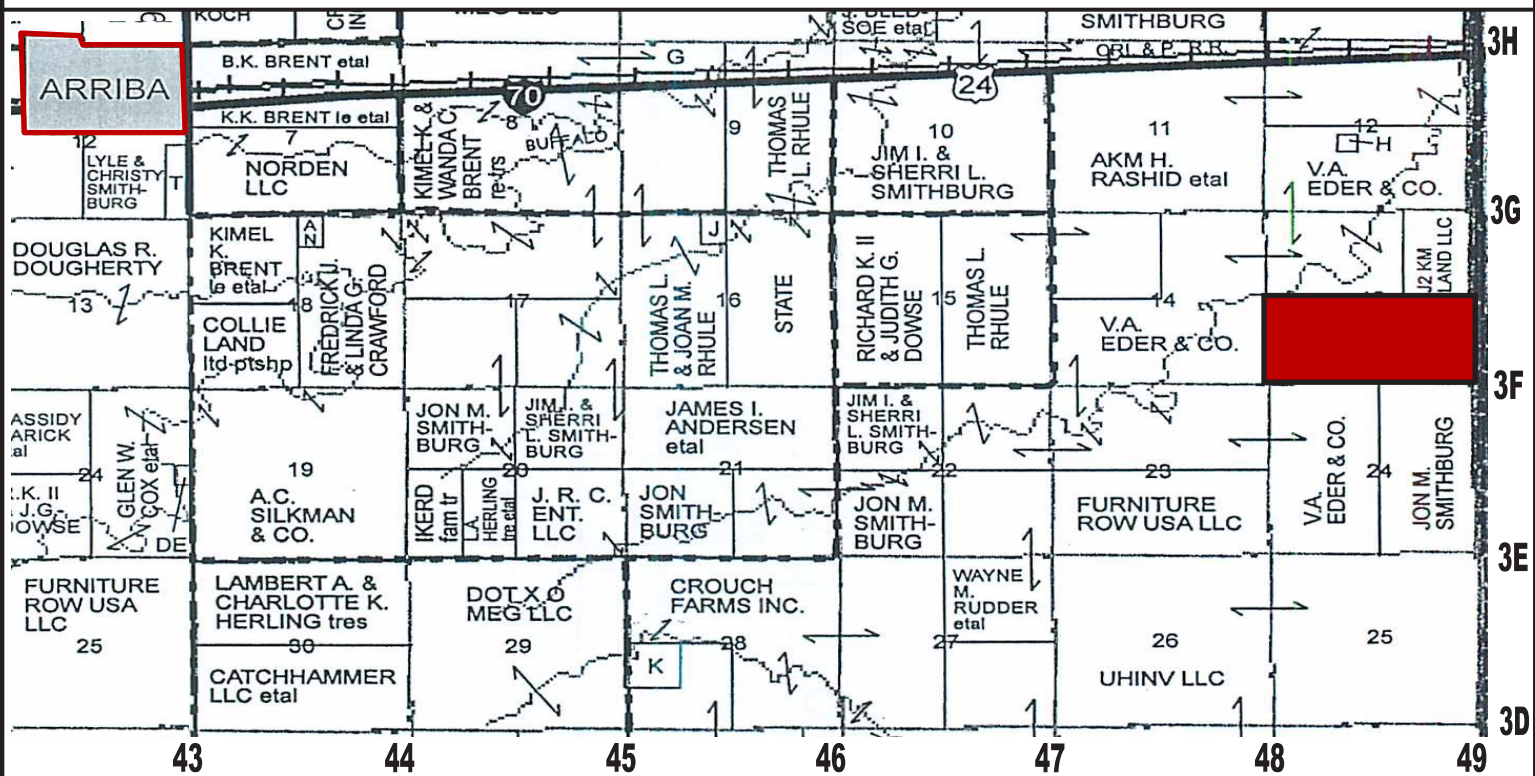


FOR SALE

313.9 ACRES CRP

L1531

LINCOLN COUNTY, COLORADO



LOCATION: From Arriba, CO take Highway 24 5 miles East to County Road 48. Turn South and follow County Road 48 for 1.5 miles and you will be at the NW corner of the section.

LEGAL: Township 9S, Range 52W, Section 13: S2

ACREAGE: 313.9 +/- acres of CRP

CRP Info:

Expiration: 9/30/2023 Acres Enrolled: 313.9
 Rent/Acre: \$34.75 Ann. Payment: \$10,908

POSSESSION: At closing.

MINERALS: None.

TAXES: 2018 Taxes—\$1,013.24

Taxes for 2018 and prior years will be paid by the Seller, 2019 taxes will be prorated to the date of closing.

PRICE: \$250,000.00



Larry J. Hostetler - Managing Broker
719-346-8661 (Office)

Specializing in Farm and Ranch Sales Throughout CO, KS, MT, NE, OK

NOTICE TO PERSPECTIVE PURCHASERS: The owner has either given the information contained herein to us or obtained from sources we deem reliable. We have no reason to doubt its accuracy, however, we do not guarantee it. Colorado Land Investments I, LLC, and the seller assume no responsibility for the omissions, corrections, withdrawals, or prior sales. The prospective purchaser should verify all information contained herein. Colorado Land Investments I, LLC, and all other agents of the broker are or will be acting in the capacity of a Transaction Broker in the Sale of subject property.