

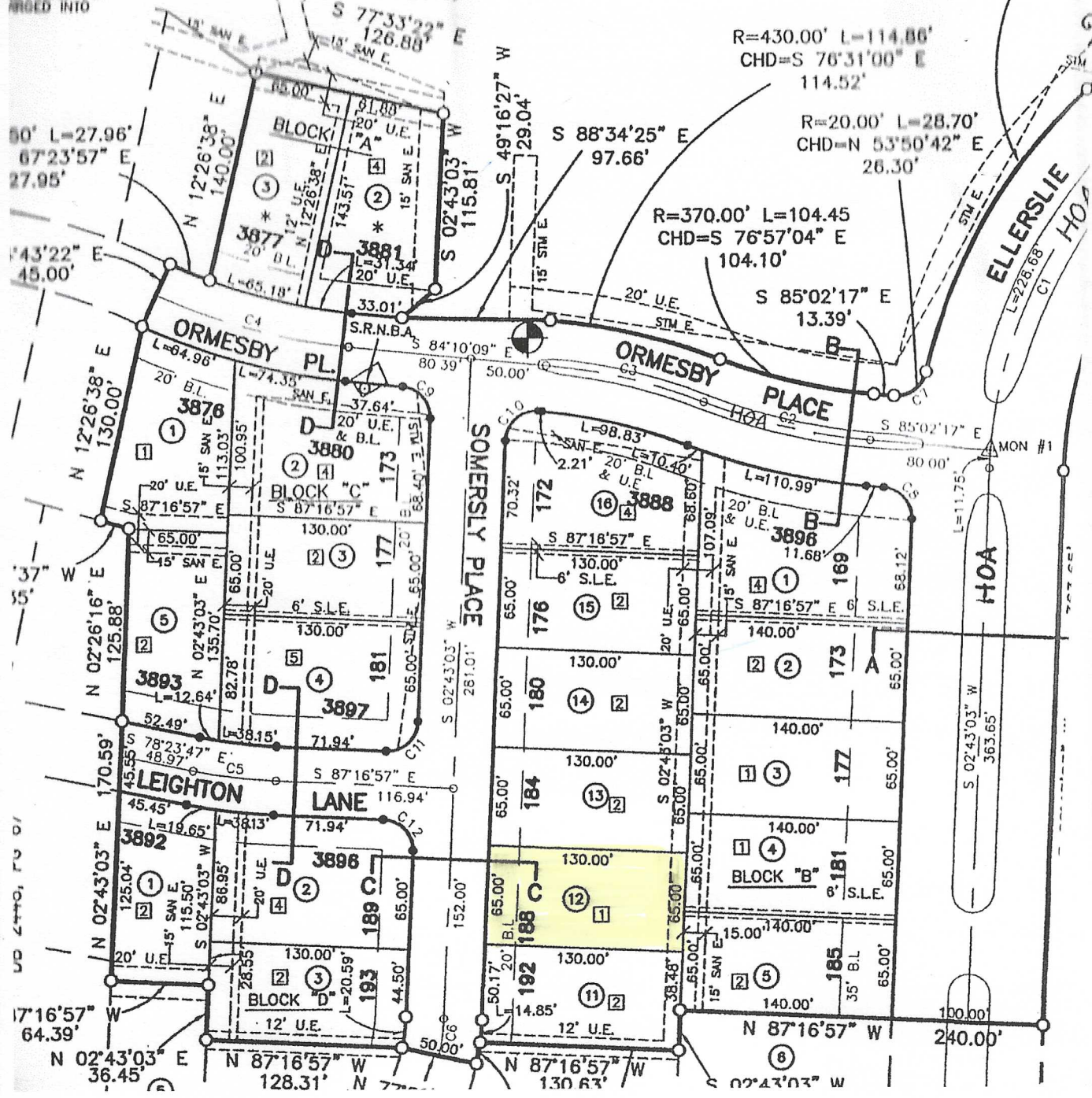
ITS STANDARDS AND AS A PREREQUISITE TO APPROVAL FOR RECORDING, THE OWNER AND ENGINEER OF RECORD MAKE THE REPRESENTATIONS THAT SURFACE WATERS WILL NOT EXCEED THESE ELEVATIONS, THAT PROTECTION ELEVATIONS OF LIVING QUARTERS INCLUDING BASEMENTS ARE ESTABLISHED FOR THE FOLLOWING LOTS: BLOCK "A", LOTS 2-3 ELEV=982.00

DELONG ESTATES DEVELOPMENT, LLC
DB 2448, PG 67

DENTON FARMS, INC.
DB 817, PG 406

R=350.00' L
CHD=N 30°4'
215.7

AND THAT IS MAHOLE U.D. ADDED INTO



BOOK 3538 - PAGE 371

Being all of Lot 12, Block B as shown on the Final Record Plat of Denton Farms, Inc., Unit 1A (Ellerslie at DeLong), Lexington, Fayette County, Kentucky as shown of record in Plat Cabinet M, Slide 489 in the office of the Fayette County Clerk; said premises being known and designated as 188 Somersly Place, Lexington, Kentucky; and

Being the same property conveyed to Cynthia L. Roe by deed dated the 8th day of May, 2017 and of record in Deed Book 3494, Page 405 in the office of the Fayette County Clerk.