

ABSOLUTE AUCTION

SATURDAY FEBRUARY 18, 9:30 AM

IRONWOOD FURNITURE

LIVE, ONSITE

134 COLLEGE STREET

BOWLING GREEN, KENTUCKY

**Surplus Woodworking & Metalworking
Equipment & Machinery**

**Related Support Tools Used in Production
Vintage Factory Carts, Racking & Shelving,
Unused Inventory, Millwork, Lumber,
Scrap Metal, Cabinet Making Materials,
Personal Property & Much, Much More**

TERMS: Full payment Sale Day, Cash or Check. All items sold in its present condition "AS-IS, WHERE IS" No Representation, Warranties or Guarantees. **No Buyer's Premium.** Sales Tax Will Apply Unless Exemption is provided at Bidder Registration.

INSPECTION: 8:00 Am on Sale Day During Registration or By Appointment with Auctioneer's

MOVING QUOTE: Continental Machinery Movers 800-270-0942



713 Sturbridge Court
Bowling Green, KY 42103

DAVID CHELF
BROKER/AUCTIONEER
270-791-5021

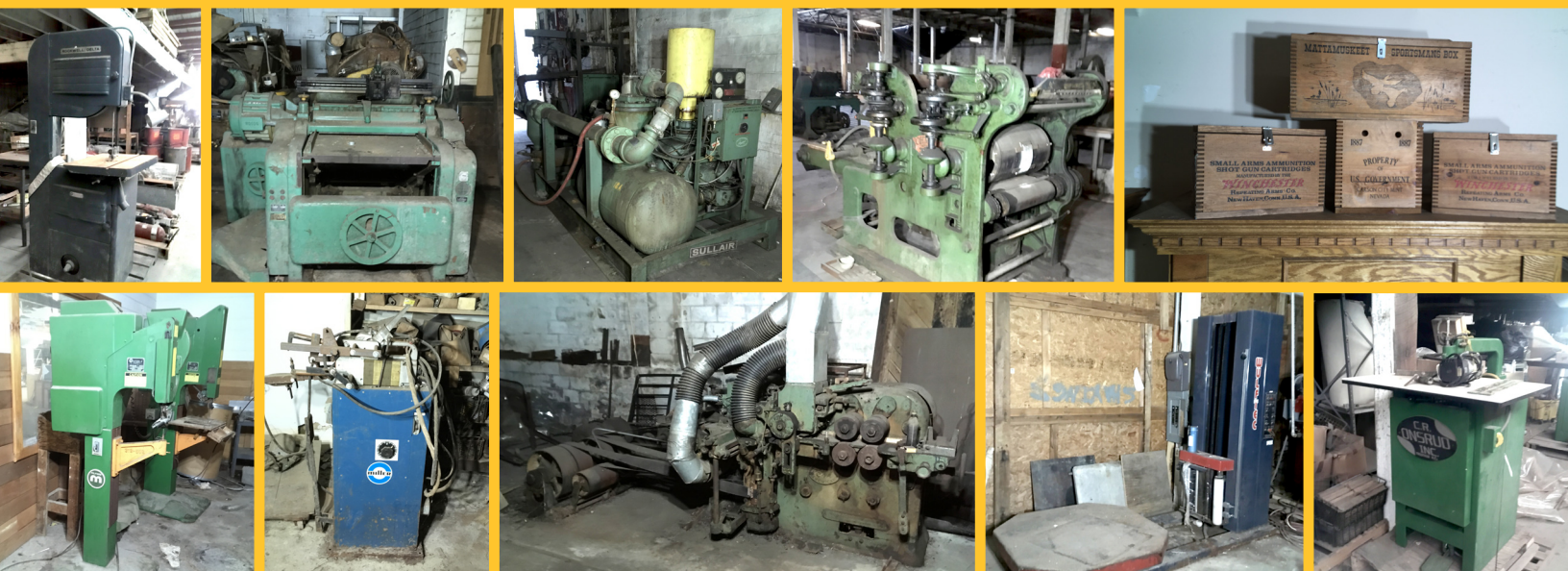
GO TO:
www.ChelfAuction.com
for More Details and
Auction Updates



AUCTION ITEMS LIST

AUCTION ITEMS LIST

- POWERMATIC BANDSAW, BLADE LENGTH MAX 12' 7" MIN. 12' 5"
- ROCKWELL BANDSAW, MODEL 28-350
- CONTINENTAL HEAVY DUTY 5 SPEED DRILL PRESS, MOD. BP13-5
- ROCKWELL BENCHTOP DRILL PRESS, MODEL 82-34 W/ BENCH
- C.R. ONSRUD INVERTED ROUTER
- BOSTITCH MODEL 14 WIRE STRETCHER
- CLEVELAND INDUSTRIAL DRILL PRESS
- WISSOTA GRINDER
- QUEEN CITY MODEL 4-F, 2-HP GRINDER
- GRIZZLY DUST COLLECTOR
- 2 – MILFORD RIVET MACHINES MODEL 313 & MOD. 423
- CENTRAL MACHINERY DUST COLLECTOR
- CRAFTSMAN BENCHTOP BELT & DISC SANDER W/ WOODEN CABINET
- BOISE CRANE BELT-STROKE SANDER
- 10" SOUTH BEND QUICK CHANGE GEAR LATHE
- DEWALT VERTICAL PANEL SAW, MODEL 3486, W/ B&D TRACK SAW
- WULFTEC INTERNATIONAL, MODEL WHP-200 PALLET STRETCH WRAPPER
- THE MORGAN #8 LOCK CORNER CUTTER, DOUBLE END HAUNCHER "RARE"
- SULLAIR SCREW COMPRESSOR MODEL 25-150L
- 2 – HOBART WELDERS, MOD. 300 & MOD. 200
- NEWTON DUAL HEAD BORING MACHINE, MODEL BA-600
- B&D RADIAL ARM SAW
- CRAFTSMAN RADIAL ARM SAW
- PORTER PIN ROUTER, MODEL 610
- HAMMOND MACHINERY BELT SANDER, MODEL RW-2
- HANNIFIN HYDRAULIC 2-TON PRESS, MODEL OGB3A-2-2-PBG
- 2 – LOGAN HYDRAULIC PRESSES
- J.A. FAY & EGAN TABLE SAW
- COMET 16" RADIAL ARM SAW
- YATES C4A MOULDER
- 2- TIME SAVER MODEL 50, SPEED BELT SANDERS
- ONSRUD ROUTER, TYPE W-304
- GROB BROTHERS BANDSAW/WELDER TYPE NS24
- ATLANTIC WORKS BAND SAW
- WALKER TURNER JIG SAW
- DELTA TABLE SAWS
- BUFFALO DRILL PRESS
- BROWN & SHARPE #2 MILLRITE MILLING MACHINE
- U.S. BURKE MODEL MVN MILLING MACHINE
- MILLER SPOT WELDER, MODEL MPS-10
- FAIRBANKS GRINDER, TYPE QZE
- TOLEDO – BEAVER ABRASIVE SAW
- CLEVELAND INDUSTRIAL DRILL PRESS, MODEL DPF-12F
- WISCONSIN MODEL V640 STATIONARY MOTOR W/ PULLY
- MOTCH AND MERRYWEATHER 24" DRILL PRESS
- PORTER CABLE 12" MITER SAW MODEL 3802
- MEISTERGRAM M700 XL MONOGRAM MACHINE & COMMERCIAL SEWING MACHINES
- THE PORTER 612 ROUTER, C.O. PORTER MACH. CO.
- COMBINATION VERTICAL & HORIZONTAL MORTISING MACHINE
- HERTNER AUTO 1000 BATTERY CHARGER TYPE L-A
- YALE BATTERY CHARGER MOD. 3YF12-680
- L.F.S 319 PNEUMATIC PRESS
- GARDNER DENVER, 2- TON AIR CHAIN HOIST, SIZE # 86
- THE HENDEY MACHINE CO. METAL WORKING LATHE
- SPRINGWATER MFG. CO. MODEL 40 IRON CRAFTER PUNCH
- TRUMAN MACHINE # 1647
- MOORE #5 BELT SANDER, MOORE CARVING MACHINE CO.
- SCHMUTZ MFG. CO. COLOR EMBOSSE. BP-1968-4206
- E.A. CO. 5-BIT BORING MACHINE
- MEREEN – JOHNSON MACHINE CO. #415 SHAPER/MOLDER
- ONSRUD SHAPER TYPE WA 50 AE
- BUSS PRECISION PLANNER MODEL 44, 30X8
- GAMETIME INC., CUTALLETTER 1437 ROUTER TABLE
- BECHTOLD MODEL U2-72 UNDER TABLE MITER SAW
- BUFFALO BETLED VENT-SET DUST COLLECTOR, SIZE 175D
- BULLARD MULTI – AU – MATICS TYPE – D VERTICAL, MUTLI SPINDLE AUTOMATIC LATHE.
- PNEUMATIC PRESS
- PNEUMATIC HAND TOOLS
- ROUSSELLE MODEL 0A PUNCH PRESS, 5 TON
- LORON FORKLIFT FORK MOUNT ATTACHMENT
- SEVERAL PAIRS OF FORKLIFT FORKS
- ANGEL GRINDER, SHOP MADE
- THE HUNTINGTON MACHINE & FOUNDRY CO. SHEAR
- MISCELLANEOUS STEEL & WOODEN WORK BENCHES, ALL SIZES
- MISCELLANEOUS SECTIONS OF RACKING, SHELVING, STANDS AND STOOLS
- BAR CLAMPS, WOOD CLAMPS, VARIOUS SIZES
- VINTAGE FACTORY CARTS – VARIOUS SIZES & STYLES
- SNOW PLOW, TRUCK MOUNT
- LARGE INVENTORY OF UN-USED HARDWOOD CABINET DOORS, DRAWER FRONTS, CABINET FACE FRONTS, FINISHED AND UN-FINISHED, MANY STILL NEW IN THE BOXES. VARIOUS STYLES AND PATTERNS
- PALLETS OF VERNER, EDGE BANDING,
- MISCELLANEOUS BOXES OF NAILS, SCREWS, BOLTS, HINGES, WOODEN PEGS
- LARGE INVENTORY LUMBER ON PALLETS, VARIOUS SIZES & LENGTHS, USED IN FABRICATION.
- ASSORTED WINCHESTER AMMO BOXES
- NEW OAK FIREPLACE MANTELS & SURROUNDS
- ASSORTED SAFETY CANS, BARRELS, PLASTIC PART BINDS, ETC.
- ELECTRIC HAND TOOLS
- LARGE QUANTITY OF ASSORTED SCRAP METAL
- LARGE ASSORTMENT OF WOODWORKING PATTERNS
- ASSORTED HAND TOOLS
- METAL & WOODEN STORAGE CABINETS
- VINTAGE 36- DRAWER WOODEN CABINET & CONTENTS
- ELECTRICAL CONDUIT
- OFFICE FURNITURE
- AND MUCH, MUCH MORE



INFO@CHELFAUCTION.COM WWW.CHELFAUCTION.COM   LET 32 YEARS EXPERIENCE WORK FOR YOU.

THE SIMPLE, STRESS -FREE WAY TO BUY & SELL PROPERTY®