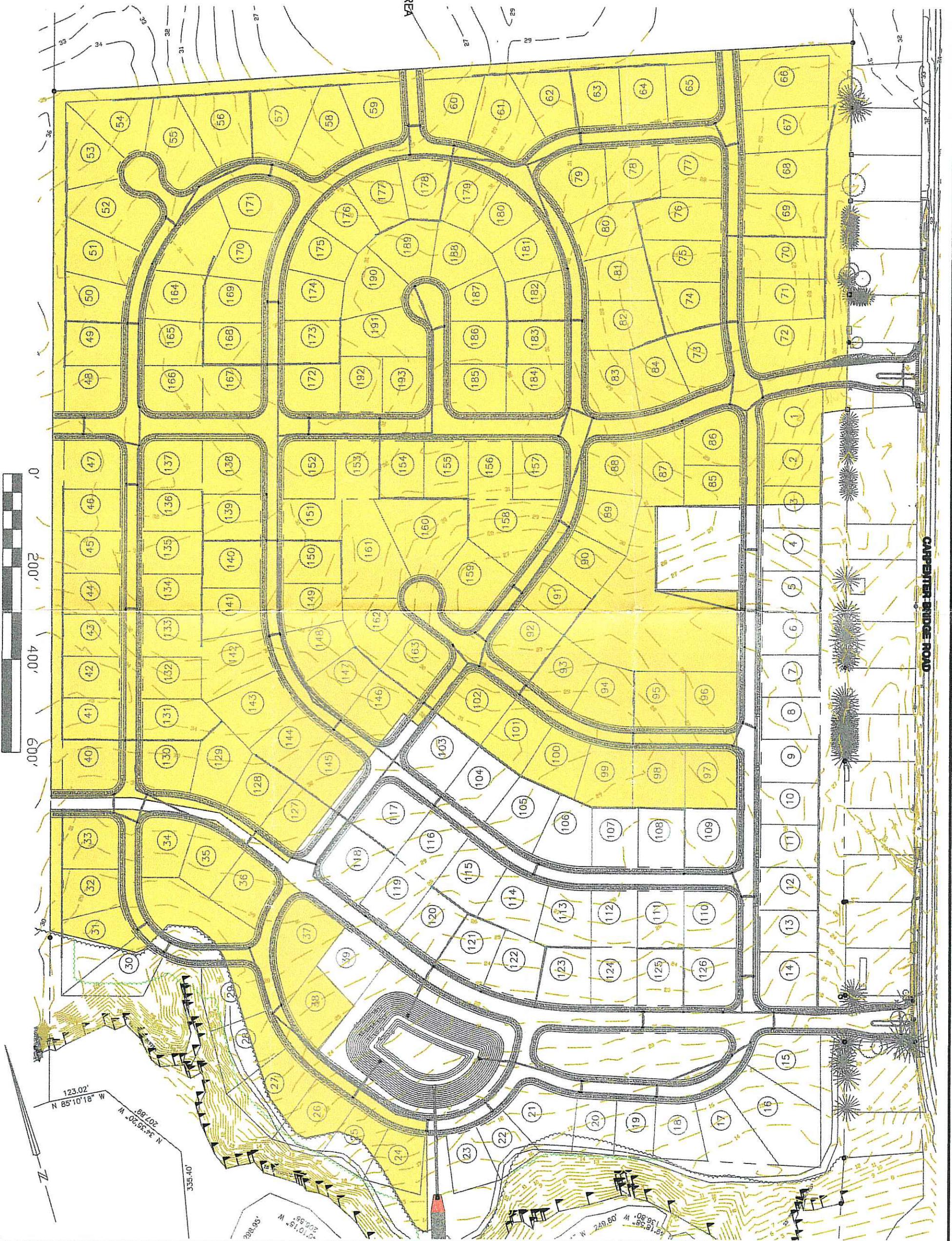


TILL ABLE AREA  
(61.98 AC.)



**1**

Date: JANUARY 07  
 Scale: 1" = 200'  
 Dwn. By: TMM  
 Proj. No.: 670A032  
 Dwg. No.:

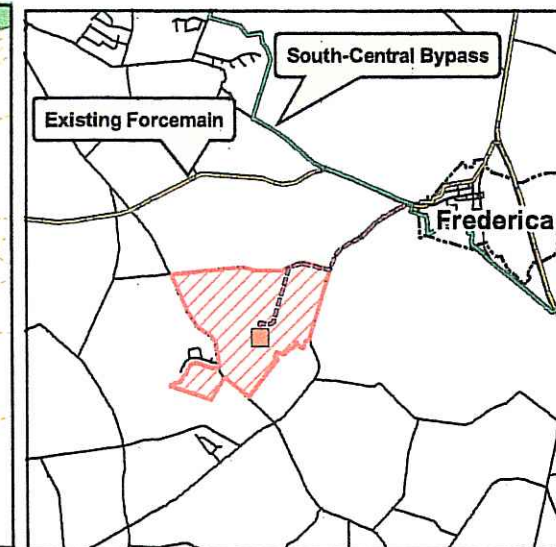
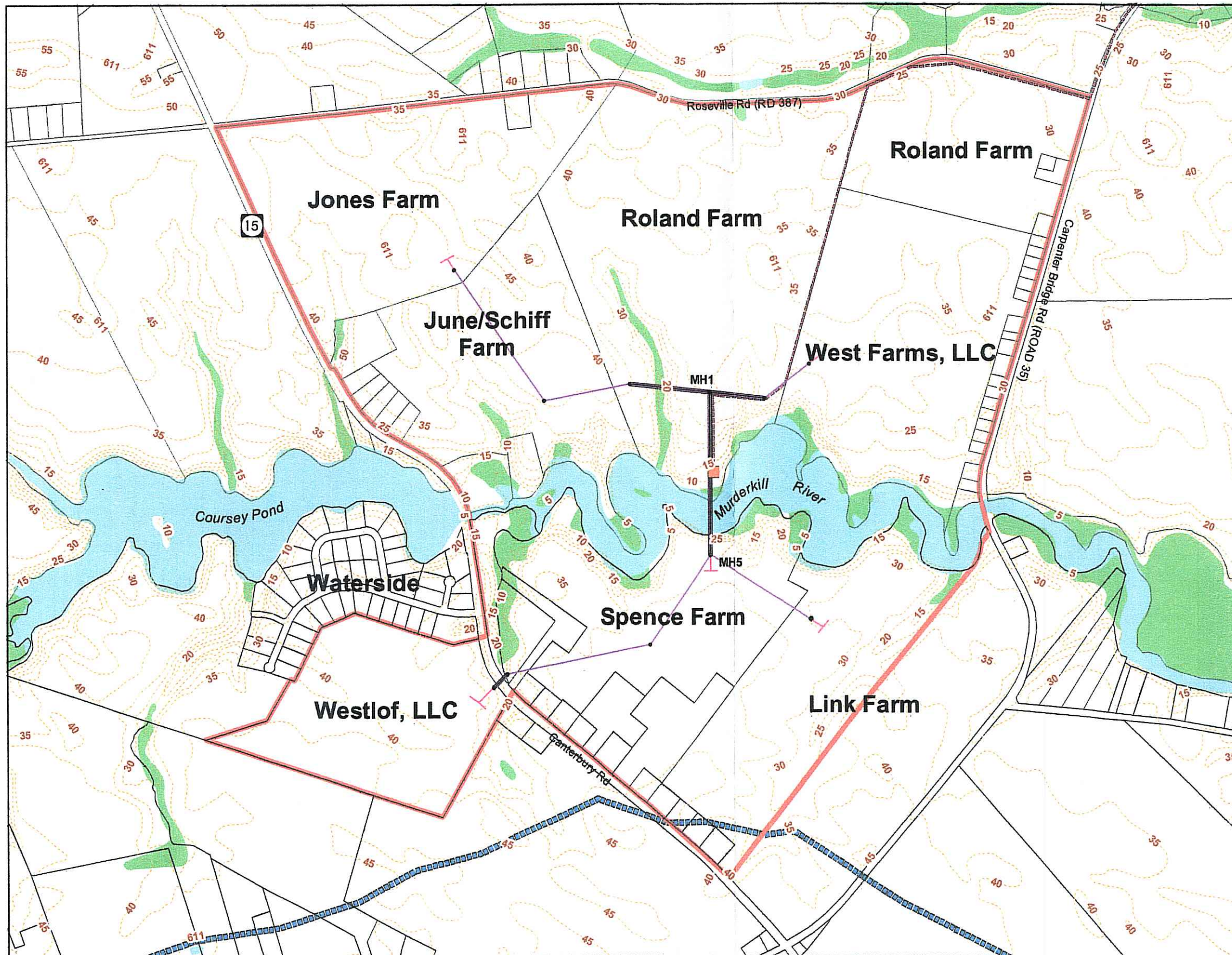
**CARPENTERS BRIDGE CROSSING**  
**NORTH MURDERKILL HUNDRED**  
**KENT COUNTY, DELAWARE**  
**TILL ABLE ACRES**



**DAVIS, BOWEN & FRIEDEL, INC.**  
 ARCHITECTS, ENGINEERS & SURVEYORS

SALISBURY, MARYLAND (410) 543-9091  
 MILFORD, DELAWARE (302) 424-1441





**Legend**

- Proposed Murderkill Basin
- Pump Station
- Manhole
- Gravity Interceptor**
- Trenchless
- Open Cut
- 8" Proposed Forcemain
- Growth Zone



**Alternate No.6A**



**Kent County Sewage Disposal District No.1  
Proposed "Murderkill River Area" Extension**

