

NOTES
 THE FIELD DATA UPON WHICH THIS PLAT IS BASED, HAD A CLOSURE PRECISION OF ONE FOOT IN 312.5 FEET, AND AN ANGULAR ERROR OF 0.1 SECONDS PER ANGLE AND WAS ADJUSTED USING A LEAST SQUARE ADJUSTMENT. EQUIPMENT USED WAS A NIKON NPL-352.

THIS PLAT HAS BEEN CALCULATED FOR A CLOSURE AND IS FOUND TO BE ACCURATE WITHIN ONE FOOT IN 322.22 FEET.

THIS PLAT WAS PREPARED WITHOUT THE BENEFIT OF A TITLE REPORT.

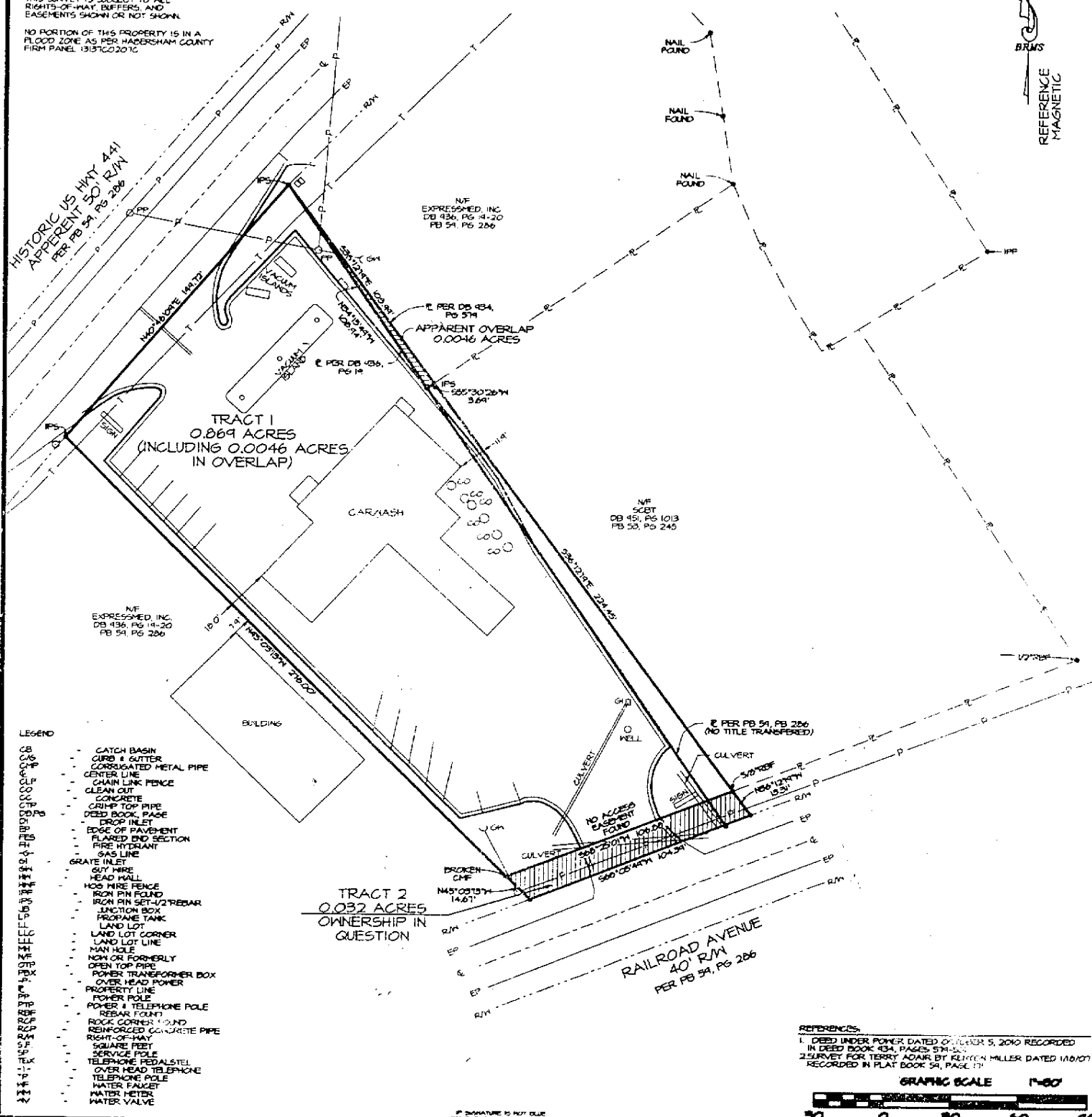
THIS PLAT IS FOR THE EXCLUSIVE USE OF THE PARTY OR PARTIES SHOWN HEREON AND IS NOT INTENDED FOR ANY OTHER THIRD PARTY.

THIS SURVEY IS SUBJECT TO ALL RIGHTS-OF-WAY, EASEMENTS, AND EASEMENTS SHOWN OR NOT SHOWN.

NO PORTION OF THIS PROPERTY IS IN A FLOOD ZONE AS PER HABERSHAM COUNTY FIRM PANEL 13137C021C.

Exhibit A
 Page 1 of 1

BRMS
 REFERENCE MAGNETIC



DATE: 8/21/21
 SCALE: HORIZ 1" = 30' VERT 1" = 30'
 SURVEYED BY: JLP
 DRAWN BY: JLP
 CHECKED BY: JLP
 APPROVED BY: JLP

NO.	DESCRIPTION	DATE	BY



SURVEY FOR
UNITED COMMUNITY
BANK, INC.
 LOCATED IN LAND LOT 41,
 10th DISTRICT
 CITY OF CLARKESVILLE
 HABERSHAM COUNTY, GEORGIA

Blue Ridge Mountain
Surveying, Inc.
 246 Lakemont Circle
 Blairsville, GA 30512
 706-897-3195

BRMS