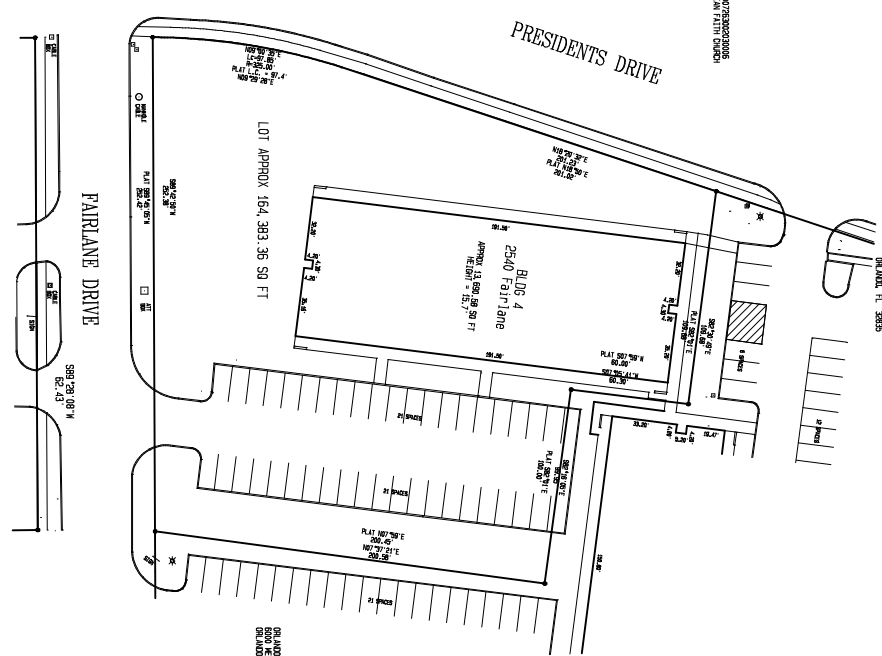


Parcel Number: 1007830000000
 081 DODD CHRISTIAN PLANT DRUGS

GRAND OTTIE SOLUTIONS LLC
 800 WESTERN BLVD
 MONTESSA, TN 38555

BASIS OF BEARINGS
 STATE PLANE
 SUG 83 510



Parcel Number: 1007830000000
 EXECUTIVE PARK, LLC

GRAND OTTIE SOLUTIONS LLC
 800 WESTERN BLVD
 MONTESSA, TN 38555

GRAND OTTIE SOLUTIONS LLC
 800 WESTERN BLVD
 MONTESSA, TN 38555

LOT "B2" BLOCK C REPLAT OF LOT "B" OF THE
 REPLAT OF BLOCK "C" EXECUTIVE PARK PLAT NO. 1

LYONS IN THE SWEET USE
 MONTESSA, ALABAMA
 APRIL 2018 PREPARED BY
 J. 1109 SOUTH HALL STREET, C
 MONTESSA, ALABAMA 35104
 334-462-2974

NOTES CORRESPONDING TO SCHEDULE B

1. THIS IS A REPLAT OF A PREVIOUSLY RECORDED PLAT, PLAT NO. 1, OF THE STATE OF ALABAMA, PREPARED BY J. LYONS IN THE SWEET USE, MONTESSA, ALABAMA, APRIL 2018, AND RECORDED IN THE PUBLIC RECORDS OF THE COUNTY OF MONTESSA COUNTY, ALABAMA, PLAT NO. 1, 1109 SOUTH HALL STREET, C, MONTESSA, ALABAMA 35104, 334-462-2974.

2. THE REPLAT IS A REPLAT OF A PREVIOUSLY RECORDED PLAT, PLAT NO. 1, OF THE STATE OF ALABAMA, PREPARED BY J. LYONS IN THE SWEET USE, MONTESSA, ALABAMA, APRIL 2018, AND RECORDED IN THE PUBLIC RECORDS OF THE COUNTY OF MONTESSA COUNTY, ALABAMA, PLAT NO. 1, 1109 SOUTH HALL STREET, C, MONTESSA, ALABAMA 35104, 334-462-2974.

3. THE REPLAT IS A REPLAT OF A PREVIOUSLY RECORDED PLAT, PLAT NO. 1, OF THE STATE OF ALABAMA, PREPARED BY J. LYONS IN THE SWEET USE, MONTESSA, ALABAMA, APRIL 2018, AND RECORDED IN THE PUBLIC RECORDS OF THE COUNTY OF MONTESSA COUNTY, ALABAMA, PLAT NO. 1, 1109 SOUTH HALL STREET, C, MONTESSA, ALABAMA 35104, 334-462-2974.

4. THE REPLAT IS A REPLAT OF A PREVIOUSLY RECORDED PLAT, PLAT NO. 1, OF THE STATE OF ALABAMA, PREPARED BY J. LYONS IN THE SWEET USE, MONTESSA, ALABAMA, APRIL 2018, AND RECORDED IN THE PUBLIC RECORDS OF THE COUNTY OF MONTESSA COUNTY, ALABAMA, PLAT NO. 1, 1109 SOUTH HALL STREET, C, MONTESSA, ALABAMA 35104, 334-462-2974.

5. THE REPLAT IS A REPLAT OF A PREVIOUSLY RECORDED PLAT, PLAT NO. 1, OF THE STATE OF ALABAMA, PREPARED BY J. LYONS IN THE SWEET USE, MONTESSA, ALABAMA, APRIL 2018, AND RECORDED IN THE PUBLIC RECORDS OF THE COUNTY OF MONTESSA COUNTY, ALABAMA, PLAT NO. 1, 1109 SOUTH HALL STREET, C, MONTESSA, ALABAMA 35104, 334-462-2974.

6. THE REPLAT IS A REPLAT OF A PREVIOUSLY RECORDED PLAT, PLAT NO. 1, OF THE STATE OF ALABAMA, PREPARED BY J. LYONS IN THE SWEET USE, MONTESSA, ALABAMA, APRIL 2018, AND RECORDED IN THE PUBLIC RECORDS OF THE COUNTY OF MONTESSA COUNTY, ALABAMA, PLAT NO. 1, 1109 SOUTH HALL STREET, C, MONTESSA, ALABAMA 35104, 334-462-2974.

7. THE REPLAT IS A REPLAT OF A PREVIOUSLY RECORDED PLAT, PLAT NO. 1, OF THE STATE OF ALABAMA, PREPARED BY J. LYONS IN THE SWEET USE, MONTESSA, ALABAMA, APRIL 2018, AND RECORDED IN THE PUBLIC RECORDS OF THE COUNTY OF MONTESSA COUNTY, ALABAMA, PLAT NO. 1, 1109 SOUTH HALL STREET, C, MONTESSA, ALABAMA 35104, 334-462-2974.

8. THE REPLAT IS A REPLAT OF A PREVIOUSLY RECORDED PLAT, PLAT NO. 1, OF THE STATE OF ALABAMA, PREPARED BY J. LYONS IN THE SWEET USE, MONTESSA, ALABAMA, APRIL 2018, AND RECORDED IN THE PUBLIC RECORDS OF THE COUNTY OF MONTESSA COUNTY, ALABAMA, PLAT NO. 1, 1109 SOUTH HALL STREET, C, MONTESSA, ALABAMA 35104, 334-462-2974.

9. THE REPLAT IS A REPLAT OF A PREVIOUSLY RECORDED PLAT, PLAT NO. 1, OF THE STATE OF ALABAMA, PREPARED BY J. LYONS IN THE SWEET USE, MONTESSA, ALABAMA, APRIL 2018, AND RECORDED IN THE PUBLIC RECORDS OF THE COUNTY OF MONTESSA COUNTY, ALABAMA, PLAT NO. 1, 1109 SOUTH HALL STREET, C, MONTESSA, ALABAMA 35104, 334-462-2974.

10. THE REPLAT IS A REPLAT OF A PREVIOUSLY RECORDED PLAT, PLAT NO. 1, OF THE STATE OF ALABAMA, PREPARED BY J. LYONS IN THE SWEET USE, MONTESSA, ALABAMA, APRIL 2018, AND RECORDED IN THE PUBLIC RECORDS OF THE COUNTY OF MONTESSA COUNTY, ALABAMA, PLAT NO. 1, 1109 SOUTH HALL STREET, C, MONTESSA, ALABAMA 35104, 334-462-2974.

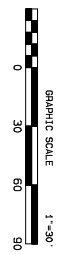


LEGAL DESCRIPTION

LEGAL DESCRIPTION:
 PORTION OF BLOCK "C" MAP OF THE REPLAT OF BLOCK "C" OF EXECUTIVE PARK, PLAT NO. 1.

SURVEYORS NOTES

1. RECORD INSTRUMENTS ARE SHOWN IN PARALLELS
2. THE LOCATION OF SOME ITEMS, SUCH AS FENCES AND FOUND CORNERS, MAY BE ESTABLISHED BY OTHER MEANS.
3. A SURVEY DOES NOT INDICATE ANY/DON BEARING MEASUREMENTS.
4. ALL MEASUREMENTS AND CALCULATIONS ARE BASED ON THE DATA PROVIDED BY THE CLIENT AND THE SURVEYOR'S FIELD NOTES.
5. THE DATE OF SURVEY INDICATES THE DATE THE FIELD WORK WAS PERFORMED.
6. THIS SURVEY WAS MADE FOR SALE PURPOSES ONLY AND MAY NOT BE SUITABLE FOR ADJUDICATING OR ENGINEERING DESIGN AND/OR PERMISSION.



LEGEND

X	LIGHT POLE
Q	POWER POLE
A	CONCRETE
△	STONE
▽	PIKE
○	POINT OF BEGINNING
●	STATION
—	CONTOUR
—	CONCRETE
—	DRYHOLE POWER
—	SANITARY SEWER
—	WATER MAIN
—	STEEL SEWER
—	TELEPHONE
—	TELEPHONE
—	DES LINE
—	DES LINE

