



MMC Detroit LLC
Job #0819-2602
www.MMC Detroit.com

The Wise Vehicle Inspection Report™

1969 1/2 Plymouth Road Runner 440 SIX Barrel

The following is a summary of the results of an Elite hands-on vehicle review that has been performed by MMC Detroit along with conversations with the owner. The results of the review were communicated to the requestor for accuracy and completeness. There were no disclosures made by the owner that we not captured in this report. This vehicle has been recorded in the MMC Detroit Vehicle Registry. There was no information discovered related to this vehicle during an internet search. This vehicle was not placed on a vehicle lift, started or driven. A **Platinum or OE** inspection is available at extra cost.

General Information	Comments
MMC Detroit Reference Job Number	0819-2602
MMC Detroit Global Registry Number	0819-35,280
Vehicle Identification Number (VIN)	RM21 M9A 280112
Vehicle S.O. Number	426 - AR - 949885 (Special order)
Original Selling Dealer/ In Service Date:	Unknown at this time
Inspection Location and Date	8/17/2019 South Carolina
Original Report Date:	8/22/2019 Updated 1/15/2020
General Estimated Overall Condition (See table in the report)	Under restoration. Final restoration was never seen in person

Conclusion:

This report is based on a review of the above un-restored 1969 Plymouth Road Runner A12 package vehicle. This vehicle has the famous 440 Six Barrel, TorqueFlite transmission and Dana 60 series axle assembly built at the Lynch Road assembly plant in Detroit, MI. This vehicle was part of the first scheduled production group with the A12 package option on SPD of April 26, 1969. However, based on our review this vehicle was built some time in mid May 1969. Overview of the features of the above vehicle in my professional opinion:

- Outstanding and rare color combination:
 - Exterior: Silver (A4 code)
 - Interior: Black
- OEM VIN and trim tag are in place
- OEM correct confidential VIN stamps on body.
- Engine: Numbers matching 440 6 bbl cid
- Transmission: Numbers matching TorqueFlite HP
- Axle: Dana 60 series 4.10:1 ratio



David Wise

MMC Detroit LLC
Managing Partner





Summary of Findings:

Note: All 1969 Six Pack Super Bees with a SPD of 329 were built between March 12 and April 10, 1969. Those with a SPD of 426 were built between April 22 and July 9, 1969.

All 1969 Six Pack Road Runners with a SPD of 329 were built between March 22 and April 10, 1969. Those with a SPD of 426 were built between April 23 and June 17, 1969.

	Item	Discovery
1	Monroney (Window sticker)	Not presented at the time of the review
	Warranty documents	Not presented at the time of the review
	Owner's manual	Not presented at the time of the review
	Owner history	Not presented at the time of the review
	Broadcast Sheet	Digital image presented. Shaper and cleared image needed
	IBM Card (s)	Not presented at the time of the review
	Internet research	Completed with no negative results RM21 M9A 280112
	Title	Not presented at the time of the review
	VIN tag	Yes, the OEM VIN tag is on the dash frame
	Trim tag	OEM factory trim tag. Note: At Lynch Road, the tag was hanging in the front window frame as the car was painted. Sometimes in caught a lot of over spray, sometimes not much or any at all. After paint was dry, it was then attached to the car. Hence the unpainted screws on Lynch Road cars.

	Item	Discovery	Numbers Matching	
			Y	N
2	Body VIN Primary	OEM Impact stamped on upper center section of the radiator core support	✓	
	Body VIN Secondary	OEM Impact stamped on LH side of the rear deck lid seal lip.	✓	
	Engine VIN	OEM correct factory impact stamped VIN	✓	
	Transmission VIN	OEM correct factory impact stamped VIN	✓	
	All numbers matching	Critical numbers in this section	✓	

	Item	Discovery
3	Exterior and paint	No issues found.
	Chassis/ Frame / Floor Pans	No issues found. Could not clearly see. However, all components appear to be in good working order. Many appear to be the original born with components.
	Front Suspension	No issues found Could not clearly see. However, all components appear to be in good working order. Many appear to be the original born with components.
	Rear Suspension	No issues found Could not clearly see. However, all components appear to be in good working order. Many appear to be the original born with components.
	Grille and Tail Panel	No issues found
	Glass and bright work	No issues found. Most items are in good shape and original to the car.
	Interior	No issues found. Most items are in good shape and original to the car. Mileage appears to be original at 54,628.
	Engine compartment	No issues found Most items are in good shape and original to the car.
	Trunk Compartment	No issues found. Correct trunk mat, jack hardware and spare tire and wheel are original to the car.
	Wheels / Tires	No issues found. Aftermarket

Comments:

- This vehicle was not started or driven
- The engine was removed from the vehicle prior to our inspection
- The vehicle was not placed on a vehicle lift. Consequently, the chassis, front suspension and rear suspension were not properly reviewed and rear



MMC Detroit LLC
 Job #0819-2602
 www.MMC Detroit.com

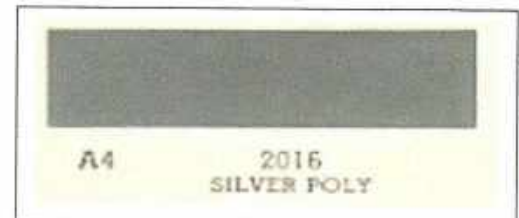
Trim Tag and VIN Tag Information Reference

The codes on the trim tag match the production broadcast sheet.

Code Ref	Description
RM	Car line: Plymouth Road Runner
21	Body Type: 2 door hardtop
E63	Engine: 383 1-4 bbl HP V8 Road Runner engine
D32	Transmission: Automatic TorqueFlite A727 HP
426	Scheduled build date: April 26, 1969
949885	Vehicle order number : Special order
A4	Roof paint: Silver Poly
A4	Body paint: Silver Poly
M	Trim grade: Medium
2	Front seats: Vinyl bench
X	Interior: Black
X9	Upper door frame: Black
26	Radiator: 26" width (054 radiator w/2863216 fan 7 blade)
A12	Engine conversion package 440 CID six barrel replaces standard 383 engine. Option cost \$ 462.80
926	Engine: 383 4 bbl V8 HP with auto trans and heater
999	Axle package: Special order 4:10:1 Dana 60 series with sure grip and 11" brake drums
93	Transmission: Automatic TorqueFlite 727 HP
15	Base sequence number
143	Gate sequence number
279085	Assembly plant sequence number
9	1969 Model year (E series)
A	Assembly plant: Lynch Road Detroit , MI
290112	Assembly plant sequence number
R / 4	Inspector imprint stamps



Original factory inspection imprints.



Vehicle Images References



OEM factory VIN tag



OEM factory trim tag



OEM correct primary confidential VIN is on the upper radiator support



OEM correct secondary confidential VIN stamp





Production Broadcast Sheet (Shaper and cleared image needed)

CHRYSLER CORPORATION CAR PRODUCTION BROADCAST

VEHICLE GROUP NUMBER: 25749825RM/1M93293112

SALES CODES: 1 2 3 4 5 6 7 8 9 10 11

1 BASIC CAR

2 STEERING

3 BUILD

4 CODES

5 COMBINATION GROUPS

6 SALES CODES

7 SALES CODES

8 SALES CODES

9 SALES CODES

10 SALES CODES

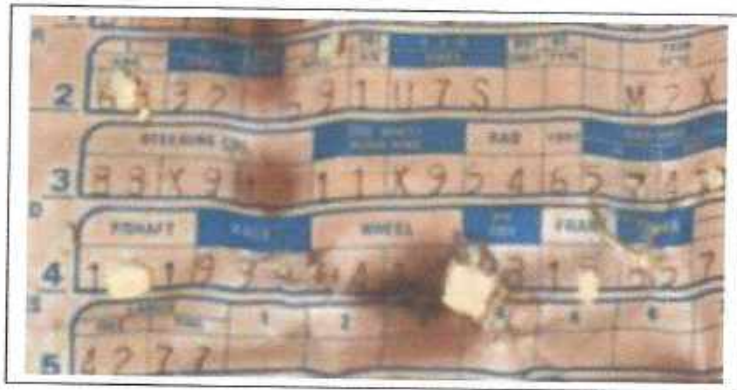
11 REMARKS

ALL CODES THAT CANNOT BE BROADCAST ON THE ABOVE LINES WILL BE BROADCAST ON THIS LINE. THE COMPLETE CODE OR CODES WILL BE BROADCAST IN AN ALPHA NUMERIC SEQUENCE WITHOUT TITLE OR FIXED POSITION.



Production Broadcast Sheet Review (Shaper and cleared image needed)

Document # 83-1000101 Rev 5/68

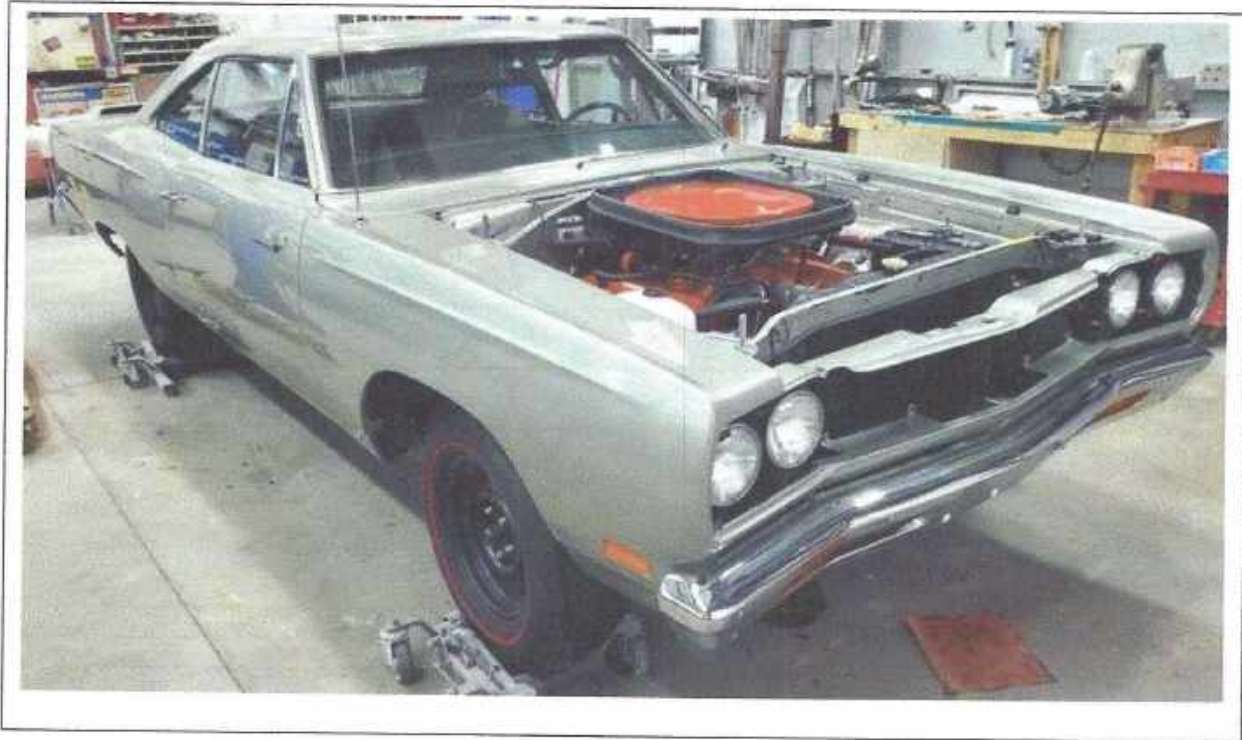




MMC Detroit LLC
Job #0819-2602
www.MMC Detroit.com

In Process Restoration Photographs

Note: In process restoration images provided by the owner and restorer



Note: In process restoration Images provided by the owner and restorer



Note: In process restoration Images provided by the owner and restorer



Note: In process restoration images provided by the owner and restorer





Note: Images provided by the owner and restorer

MMC Detroit LLC
Job #0819-2602
www.MMC Detroit.com

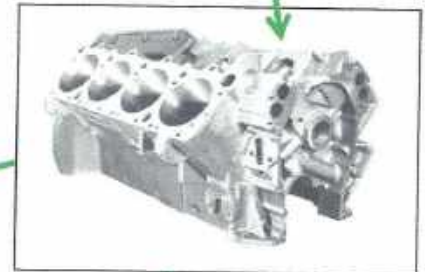




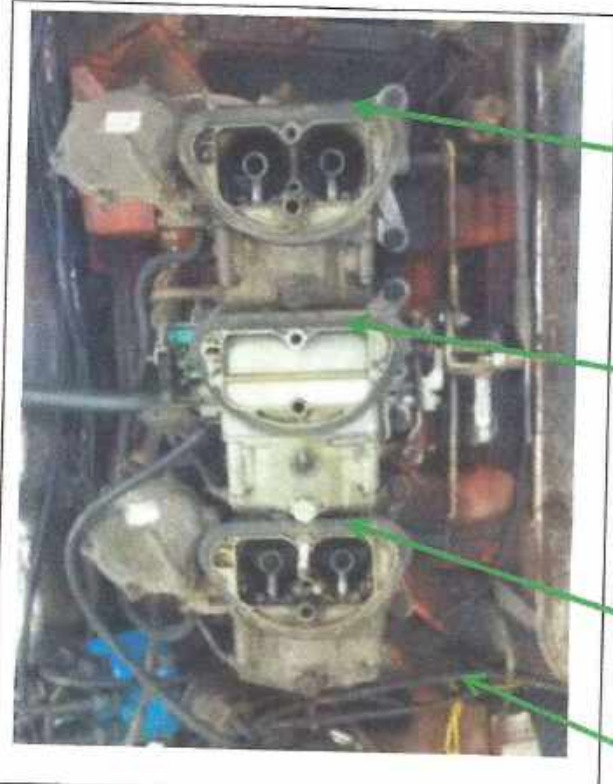
Powertrain Validation Photographs

Powertrain Review: Engine 440 HP

Checked	Component	Comments
✓	Block casting	# 2536480- 6 cast 2/18/1969
✓	Engine build date	E440 5 3 HP B
✓	Distributor	Incorrect – Electronic unit is in place
✓	Spark plug wires	Correct style
✓	RH/ LH Ex manifold	Correct RH dated 4/24 P
✓	Alternator	Original style not correct for the application
✓	Carburetors Holly 2300	Center list 4392 dated 1209, rear list 4393 dated 1229, front list 4394 date 1289
✓	Fast idle solenoid	Correct
✓	Intake Manifold	Original Edlebrock aluminum
✓	Breather/ Valve Cvrs	Correct
✓	Water pump hsg	# 2780987
✓	PS cooler	Correct in place
✓	Oil pan	Could not see
✓	Battery	Not present
✓	Fuel pump	Correct style
✓	Starter	Correct style
✓	Radiator	Correct #2949 054 vendor 59538 with proper small font made in Canada
✓	Fan/ fan clutch	Original #2862216 / Original dated E6J #2806070
✓	Air cleaner	Correct lid, base and element









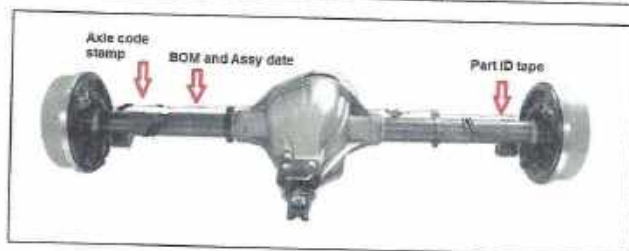
Powertrain Photographs

Axle Assembly/ Rear Suspension

Note: The chassis and suspension was not properly evaluated because the vehicle was not placed on a vehicle lift. It was not in an area to safely jack up the vehicle.

Checked	Component	Comments
✓	Carrier type	Dana 60
✓	Carrier casting No.	C34155
✓	BOM Number	Could not see
✓	Carrier date	Could not see
✓	Assembly Number	Could not see
✓	Leaf springs RH 6	Could not see
✓	Leaf springs LH 5 1/2 1/2	Could not see
✓	Rear strap	Could not see
✓	Drive shaft	Original

68-69	B body	3.54	PowerLok	602957-1,-2,-3,-4
		4.10	PowerLok	602957-5,-6
69.5-72	B body	3.54	PowerLok	603109-1,-2
		4.10	PowerLok	603109-3,-5
		4.56	PowerLok	603109-6,-7,-8
68-71	E body	3.54	PowerLok	603080-1,-2,-4
		4.10	PowerLok	603080-3,-5
		4.56	PowerLok	603080-6,-7
70-72	E body	3.54	TracLok	603226-1,-2
		4.10	TracLok	603226-4





Powertrain Photographs

MMC Detroit LLC
 Job #0819-2602
 www.MMC Detroit.com

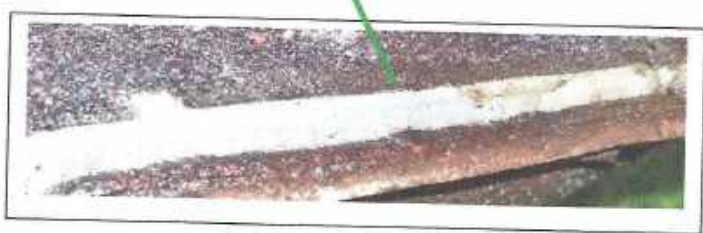
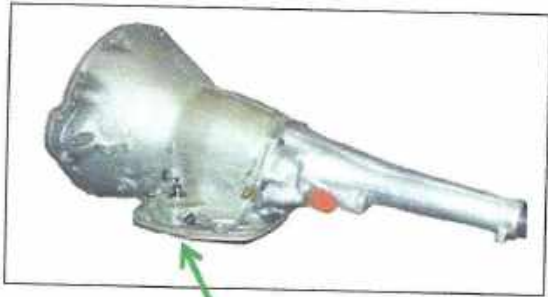
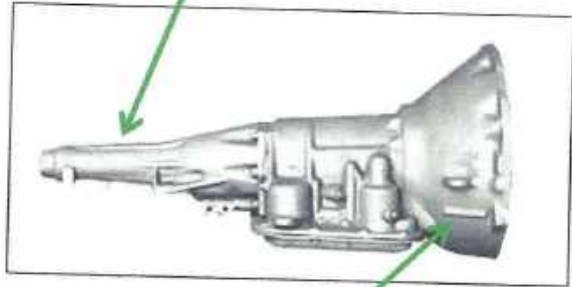
Transmission: TorqueFlite A727 HP

Checked	Component	Comments
✓	Main case casting date	2892093L
✓	Unit assembly date	2841
✓	Total built that day	5745
	Mani cast casting number	Could not see
	Tail shaft casting number	Could not see
	Tail shaft casting date	Could not see
	U joints	Could not see
	Drive shaft	Could not see

3-Speed TorqueFlite Automatic

Three forward gears combine with an efficient torque converter and automatic hydraulic shifting to make TorqueFlite perhaps the best all-around automatic transmission ever designed. Upshifts occur so smoothly and quickly they are barely perceptible. Power transmission is so efficient, TorqueFlite is preferred by many experienced drivers over manual transmission for maximum acceleration in competition events.

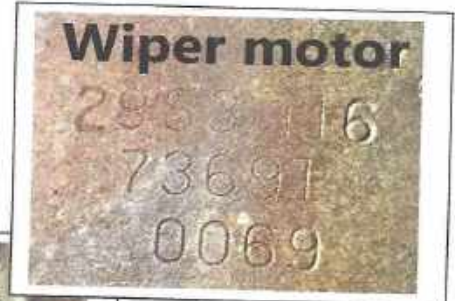
Could not see



Engine Compartment

Note: The fiberglass hoods were Plaza Fibreglass Mfg. Co. Toronto, Ontario CANADA

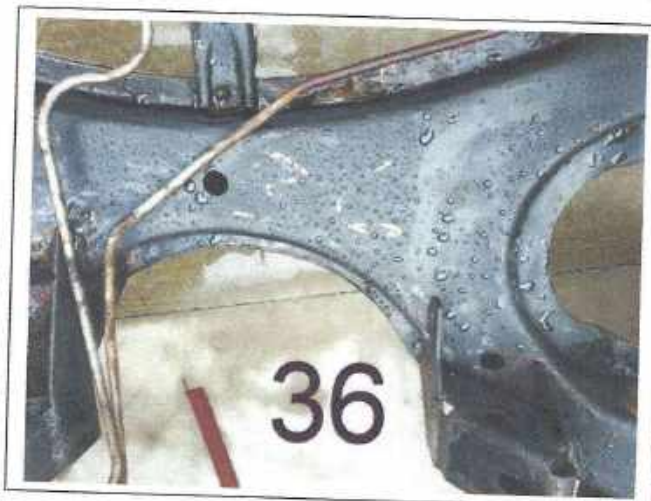
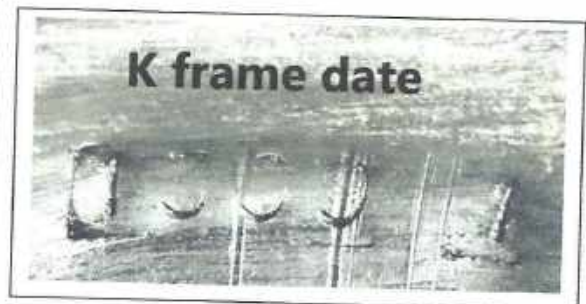
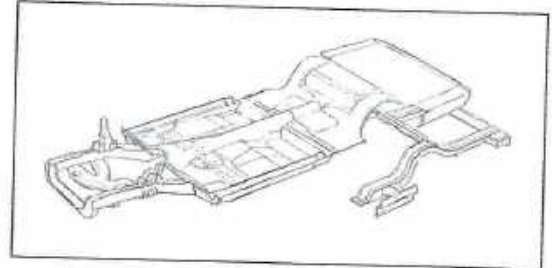
Checked	Component	Comments
✓	Steering gear box	Correct 228726 dated 0909
✓	Cowl and fire wall	In place No issues
✓	Master cylinder	2680809
✓	Forward wire harness	Correct
✓	Wiper motor #2883116	vendor #73691 dated 0069
✓	Voltage regulator	Original in glove compartment



Chassis, Frame and Suspension

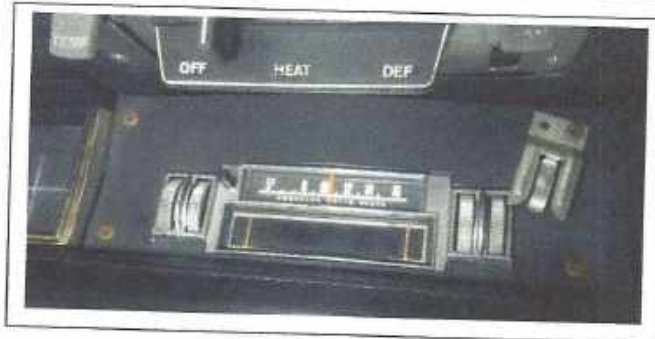
Note: The chassis and suspension was not properly evaluated because the vehicle was not placed on a vehicle lift. It was not in an area to safely jack up the vehicle.

Checked	Component	Comments
✓	RH/LH front frame	In place Could not see details
✓	RH / LH rear frame	In place Could not see details
✓	Anti-sway bar	In place No issues
✓	Std. pinion snubber plate	Could not see
✓	Correct/ brake fuel line	In place Could not see details
✓	Radiator core support	In place Could not see details
✓	Rear leaf spring hanger	Correct Ply style
✓	K correct dated 1309-1	In place No issues
✓	LCA - RH/LH	In place No issues
✓	Torsion bars	Could not see
✓	Exhaust	Could not see



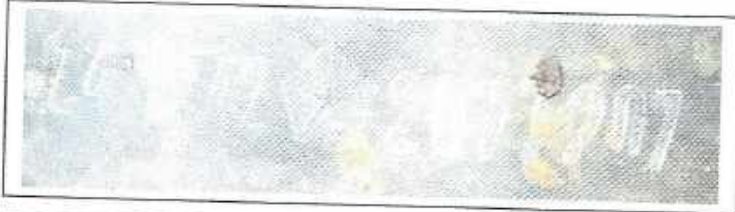
Interior Reference

The interior is all original and in good condition



Trunk Reference

Checked	Component	Comments
✓	Jack and related hardware	In place No issues. Jack dated 9 E. Jack hook #2856116
✓	Trunk Mat dated 24 th week of 68	In place No issues # 2877207
✓	Spare tire and wheel	In place No issues
✓	Tail light wire harness	In place No issues 2983193
✓	Rear speaker / harness	Correct #2580689/ correct
✓	Die lot stamps	Many are 13 , 16 , 18





Chrysler Production Schedule: 1969-70 Model Year (Series: E)

1969 Build Date Table

Day	Jan	Feb	Mar	Apr	May	June	July
1	2714	2745	2773	2804	2834	2865	2895
2	2715	2746	2774	2805	2835	2866	2896
3	2716	2747	2775	2806	2836	2867	2897
4	2717	2748	2776	2807	2837	2868	2898
5				2808	2838	2869	2899
6				2809	2839	2870	2900
7	2720	2751	2770	2810	2840	2871	2901
8				2811	2841	2872	2902
9				2812	2842	2873	2903
10				2813	2843	2874	2904
11				2814	2844	2875	2905
12	2725	2756	2784	2815	2845	2876	2906
13				2816	2846	2877	2907
14	2727	2758	2786	2817	2847	2878	2908
15	2728	2759	2787	2818	2848	2879	2909
16	2729	2760	2788	2819	2849	2880	2910
17	2730	2761	2789	2820	2850	2881	2911
18	2731	2762	2790	2821	2851	2882	2912
19	2732	2763	2791	2822	2852	2883	2913
20	2733	2764	2792	2823	2853	2884	2914
21	2734	2765	2793	2824	2854	2885	2915
22	2735	2766	2794	2825	2855	2886	2916
23	2736	2767	2795	2826	2856	2887	2917
24	2737	2768	2796	2827	2857	2888	2918
25	2738	2769	2797	2828	2858	2889	2919
26	2739	2770	2798	2829	2859	2890	2920
27	2740	2771	2799	2830	2860	2891	2921
28	2741	2772	2800	2831	2861	2892	2922
29	2742		2801	2832	2862	2893	2923
30	2743		2802	2833	2863	2894	2924
31	2744		2803		2864		2925

Engine assembly date

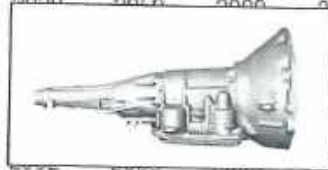


Engine casting date

1970 Model Production

Aug.	Sept.	Oct.	Nov.	Dec.
2926	2957	2987	3018	3048
2927	2958	2988	3019	3049
			3020	3050
			3021	3051
			3022	3052
			3023	3053
			3024	3054
				3055
				3056
2935	2966	2996	3027	3057
2936	2967	2997	3028	3058
2937	2968	2998	3029	3059
2938	2969	2999	3030	3060
2939	2970	3000	3031	3061
2940	2971	3001	3032	3062
2941	2972	3002	3033	3063
2942	2973	3003	3034	3064
2943	2974	3004	3035	3065
2944	2975	3005	3036	3066
2945	2976	3006	3037	3067
2946	2977	3007	3038	3068
2947	2978	3008	3039	3069
2948	2979	3009	3040	3070
2949	2980	3010	3041	3071
2950	2981	3011	3042	3072
2951	2982	3012	3043	3073
2952	2983	3013	3044	3074
2953	2984	3014	3045	3075
2954	2985	3015	3046	3076
2955	2986	3016	3047	3077
2956		3017		3078

Transmission assembly date





MMC Detroit LLC
 Job #0819-2602
 www.MMC Detroit.com

Chrysler 10,000 day Production Calendar for 1968

1968 Build Date Table

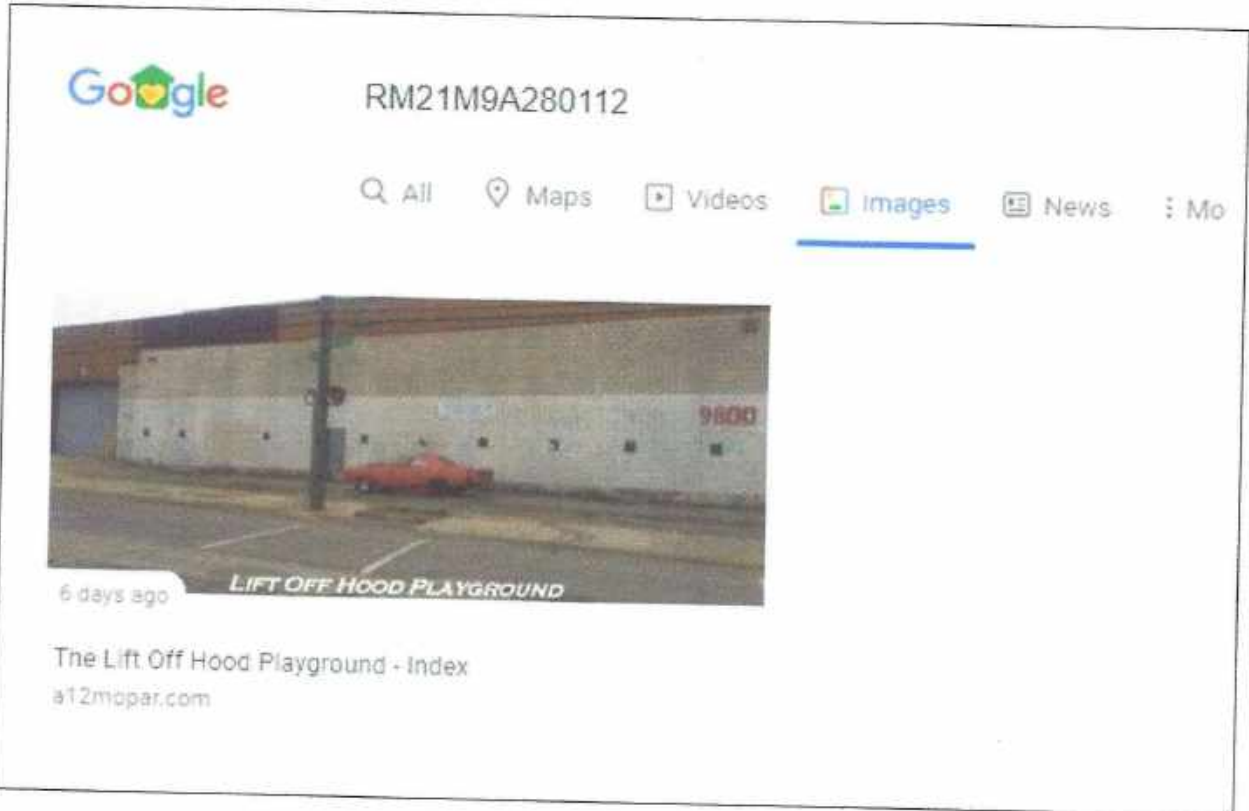
Day	1968 Build Date							1969 Model Production				
	Jan	Feb	Mar	Apr	May	June	July	Aug.	Sept.	Oct.	Nov.	Dec.
1	2348	2379	2408	2439	2469	2500	2530	2561	2592	2622	2653	2683
2	2349	2380	2409	2440	2470	2501	2531	2562	2593	2623	2654	2684
3	2350	2381	2410	2441	2471	2502	2532	2563	2594	2624	2655	2685
4	2351	2382	2411	2442	2472	2503	2533	2564	2595	2625	2656	2686
5	2352	2383	2412	2443	2473	2504	2534	2565	2596	2626	2657	2687
6	2353	2384	2413	2444	2474	2505	2535	2566	2597	2627	2658	2688
7	2354	2385	2414	2445	2475	2506	2536	2567	2598	2628	2659	2689
8	2355	2386	2415	2446	2476	2507	2537	2568	2599	2629	2660	2690
9	2356	2387	2416	2447	2477	2508	2538	2569	2600	2630	2661	2691
10	2357	2388	2417	2448	2478	2509	2539	2570	2601	2631	2662	2692
11	2358	2389	2418	2449	2479	2510	2540	2571	2602	2632	2663	2693
12	2359	2390	2419	2450	2480	2511	2541	2572	2603	2633	2664	2694
13	2360	2391	2420	2451	2481	2512	2542	2573	2604	2634	2665	2695
14	2361	2392	2421	2452	2482	2513	2543	2574	2605	2635	2666	2696
15	2362	2393	2422	2453	2483	2514	2544	2575	2606	2636	2667	2697
16	2363	2394	2423	2454	2484	2515	2545	2576	2607	2637	2668	2698
17	2364	2395	2424	2455	2485	2516	2546	2577	2608	2638	2669	2699
18	2365	2396	2425	2456	2486	2517	2547	2578	2609	2639	2670	2700
19	2366	2397	2426	2457	2487	2518	2548	2579	2610	2640	2671	2701
20	2367	2398	2427	2458	2488	2519	2549	2580	2611	2641	2672	2702
21	2368	2399	2428	2459	2489	2520	2550	2581	2612	2642	2673	2703
22	2369	2400	2429	2460	2490	2521	2551	2582	2613	2643	2674	2704
23	2370	2401	2430	2461	2491	2522	2552	2583	2614	2644	2675	2705
24	2371	2402	2431	2462	2492	2523	2553	2584	2615	2645	2676	2706
25	2372	2403	2432	2463	2493	2524	2554	2585	2616	2646	2677	2707
26	2373	2404	2433	2464	2494	2525	2555	2586	2617	2647	2678	2708
27	2374	2405	2434	2465	2495	2526	2556	2587	2618	2648	2679	2709
28	2375	2406	2435	2466	2496	2527	2557	2588	2619	2649	2680	2710
29	2376	2407	2436	2467	2497	2528	2558	2589	2620	2650	2681	2711
30	2377		2437	2468	2498	2529	2559	2590	2621	2651	2682	2712
31	2378		2438		2499		2560	2591		2652		2713



MMC Detroit LLC
Job #0819-2602
www.MMC Detroit.com

Internet Search Reference

No negative results discover during the search by VIN RM21M9A280112

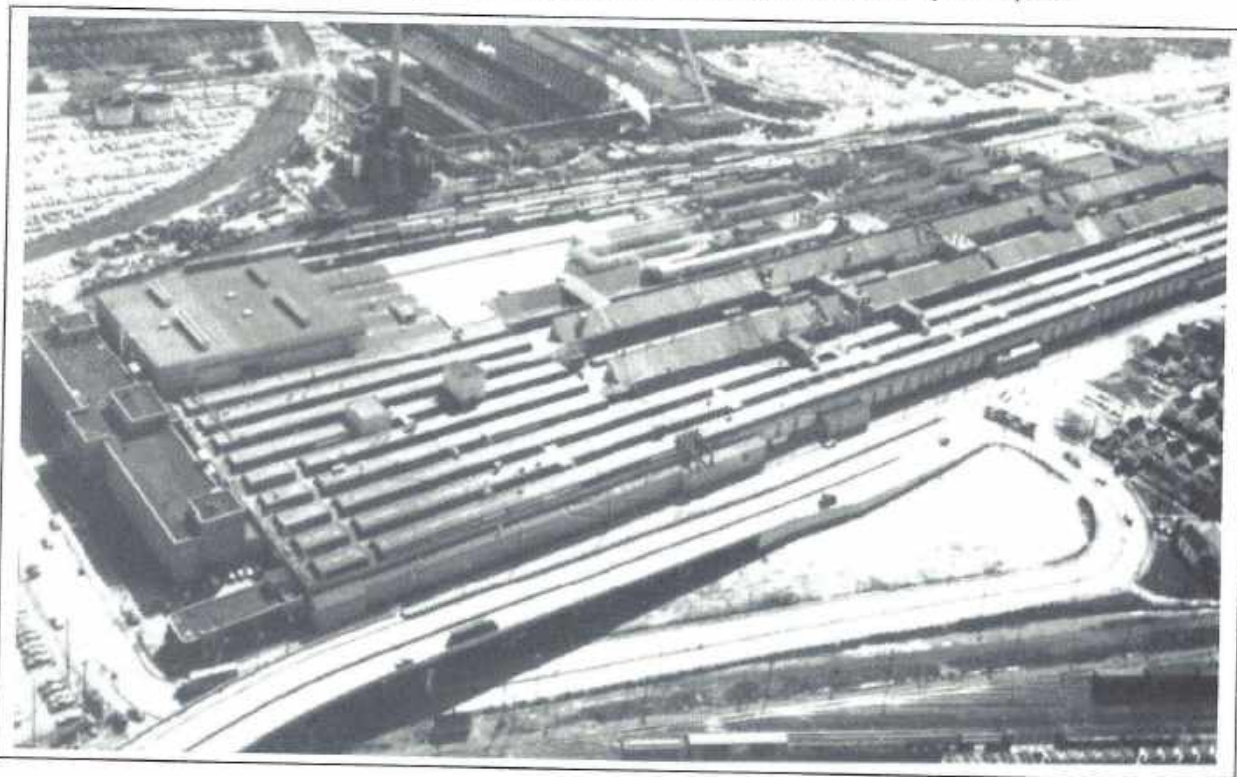




MMC Detroit LLC
Job #0819-2602
www.MMC Detroit.com

Original Assembly Plant Reference - Lynch Road Assembly plant in Detroit, MI

Lynch Road Assembly plant in Detroit, MI. The physical address was 6334 Lynch Road. This vehicle was assembled at this plant. Chrysler Product Planning and Fleet Engineering figured out how to install 98% of the "Package" items on the normal assembly line and then transfer the vehicles to a secondary line and install the hood, hood pins, and air cleaner. Due to the vehicle complexity over a typical 383 vehicle it was best to have this secondary line in place.





Original Factory A12 Specifications

All A12 package cars were assembled at Lynch Road assembly plant in Detroit, MI. Originally Chrysler fleet engineering sent a 29 item vehicle build specifications to the plant dated 1-15-69 TO 1-17-69.

Engine

- CARBURATORS: 3 HOLLEY 2 BARRELS ,VACUUM END CARBS, 1350 CFM TOTAL
- INTAKE MANIFOLD: EDELBROCK ALUMINUM
- CRANKSHAFT: SAME AS STANDARD 440, SPECIALLY SELECTED AND SHOT PEENED
- PISTON RINGS: 440 MAGNUM STYLE EXCEPT TOP RING IS MOLY FILLED
- CAMSHAFT: SAME AS 440 MAGNUM EXCEPT IT HAS LOW TAPER PROFILE TO RESIST WEAR
- VALVE LIFTERS: SAME AS 440 MAGNUM EXCEPT .0005" UNDER SIZED AND FLAT FACED
- TIMING CHAIN /SPROCKETS: SAME AS 440 MAGNUM, NYLON SPROCKET -3 BOLT MOUNTING
- ROCKER ARMS:SIMILIAR TO 440 MAGNUM EXCEPT STAMPED FROM HEAVIER GAUGE STEEL
- VALVES: SAME AS 440 MAGNUM EXCEPT CHROMED STEMS
- VALVE SPRINGS/DAMPERS:ALL NEW HIGH LOAD
- DISTRIBUTOR:NEW PART NUMBER,PRESTOLITE,DUAL-BREAKER
- OIL PUMP:SAME AS STREET HEMI
- EXTRAS: CARB SHUTOFF SOLENOID,SPECIAL THOTTLE LINKAGE,COIL BRACKET
- AIR CLEANER: OVAL UNIT WITH SEAL THAT FIT AGAINST FIBERGLASS HOOD FOR FRESH AIR

Chassis:

- TIRES:GOODYEAR G-70-15 REDLINE CUSTOM WIDE TREAD POLYGLAS TUBELESS
- WHEELS:15X6.0"JJ H.D. PAINTED BLACK ONLY.CHROME LUG NUTS.NO HUB CAPS
- New process gear A 833 4 speed transmission and clutch same unit as a street Hemi .
- SUSPENSION:S15 POLICE HANDLING PKG
- COOLING SYSTEM:26" RADIATOR,COMPLETE N51 MAXIMUM COOLING PKG.
- VIN: "M" AS THE 5TH CALLOUT DENOTING "HIGH PERFORMANCE 440 -SPECIAL ORDER"
- REAR AXLE:4.10 DANA (WITH EITHER TRANS.) 9.75 RING GEAR,SURE GRIP.
- REAR BRAKES:H.D. 11X2.5" MANUAL ADJUST,FRONT WERE 11X3.0" H.D. MANUAL ADJUST.
- EXTRAS: FIBERGLASS LIFT-OFF HOOD, NON GLARE BLACK,
- HUGE ENGINE CALLOUT DECALS, 4 HOOD PINS.
- PINS WERE HELD ON BY A-BODY GLOVE BOX LANYARDS



A12 Package Part Number Reference

- J11Y spark plugs (Champion- gap.035)
6353 Hurst shifter - (number found on reverse arm)
DR1114420 solenoid Delco Remy
1686107 radiator cap (dimple/16#)
1857780 torsion bar (right) and 1857781 torsion bar (left)
- 2071727 Lower Control Arm Bumper Spacer
2098300 voltage regulator
2421173 dual points set
2444241 coil Chry-Essex (long) and 2444242 coil Chry Prestolite (short)
2444442 starter relay (auto) and 2444453 starter relay (man)
2444478 alternator pulley (single)
2530688 cross member (manual transmission)
2532401 oil pan '402'
2536121 motor mount rubber insulators
2536132 right motor mount bracket
2539795 leaf spring (left) and 2539965 leaf spring (right)
2642635 37 amp alternator and 2642944 37 amp alt with pulley
2658454 timing cover
2658888 exhaust manifold counterbalance
2780988 (PN) 2780987 (cast) water pump housing
2785434 fan shroud
2806070 fan torque clutch
2808216 fan belt
2808270 oil pump
2808898 (PN) 2808900 (cast) right exhaust manifold
2808068 horn 'low' note (bee) and 2808069 horn 'high' note (bee)
2808577 master cylinder (manual drums)
2808622 PCV valve
2822461 horn relay
2842940 Super Bee (3M reflective) black quarter panel decal (R)
2842941 Super Bee (3M reflective) black quarter panel decal (L)
2842952 Super Bee (3M reflective) white quarter panel decal (R)
2842953 Super Bee (3M reflective) white quarter panel decal (L)
2843991 (PN) 2843992 (cast) left exhaust manifold
2860356 rear crossmember (oval gas fill more common than round on A12s)
- 2863216 fan (7 blade)
2863245 radiator hose outlet
2863257 radiator hose inlet
- 2863751 left motor mount bracket
2864463 ignition switch assembly (with ground pole)
2864464 ignition switch (without ground pole)
2875711 alternator pulley (double)
2875981 IBS4014C distributor (man) and 2875982 IBS4014D distributor (auto)
2881938 crossmember (auto)
2892093 auto trans
- 2892624 (PN) 2892626 (cast) bellhousing
2899052 valve cover (left)
2902966 right quarter panel scoop
2902967 left quarter panel scoop
2926233 horn 'beep beep' runner
2930781 fender turn signal indicators
2935803 ignition and door lock set (3 pieces) with keys
2944169 H wheels
2944269 master cylinder package (power assist)
2946464 valve cover (right)
2949054 radiator 26 inch
2983116 wiper motor
2996560 driveshaft (Road Runner)
2996581 driveshaft (Super Bee)
3004107 carter fuel pump
3410609 man trans
3412046 Edelbrock intake manifold
3412050 4393 (list) 50 abbreviated PN (on paper tag) both front Holley carburetor
3412051 4394 (list) 51 abbreviated PN (on paper tag) both rear Holley carburetor
3412052 4391 (list) 52 abbreviated PN (on paper tag) man center Holley carburetor
3412053 4392 (list) 53 abbreviated PN (on paper tag) auto center Holley carburetor
3412056 panel, hood Super Bee w/Six Pack
3412058 air cleaner base (with wide lip lid included)
3412411 pin (stud) hold down lock Super Bee w/Six Pack
3412415 bracket, hood retaining Super Bee w/Six Pack
3412423 call out 'SIX PACK' hood letters
3454390 chrome w chrome button door handle (L)
3454391 chrome w chrome button door handle (R)
3570036 Super Bee decal (circle in stripe)
3577389 wide lip orange air cleaner lid(w decals)
3577459 wide lip orange air cleaner lid(no decals)
4349216 Mopar Street Hemi Orange Paint for lids
602957-6 Dana 60 4:10, with 11 inch backing plates
- 69 Six Pack Engine/Trans Internals
- 2205568 crank sprocket
2532490 camshaft sprocket 2532492 timing chain
2536430 block casting number
2658457 vibration damper
2843906 cylinder head
3004535 pistons
3004718 rocker arm (right)
3004719 rocker arm (left)
3410208 flywheel
3418475 intake valve
3418479 exhaust valve
3418491 valve springs
3420039 cam tappet
3420228 rings
3462038 camshaft
3462426 (PN) 1851535 (cast) connecting rods
3512036 six pack crankshaft



A12 Package Estimated Production Breakdown: Updated 4/26/09

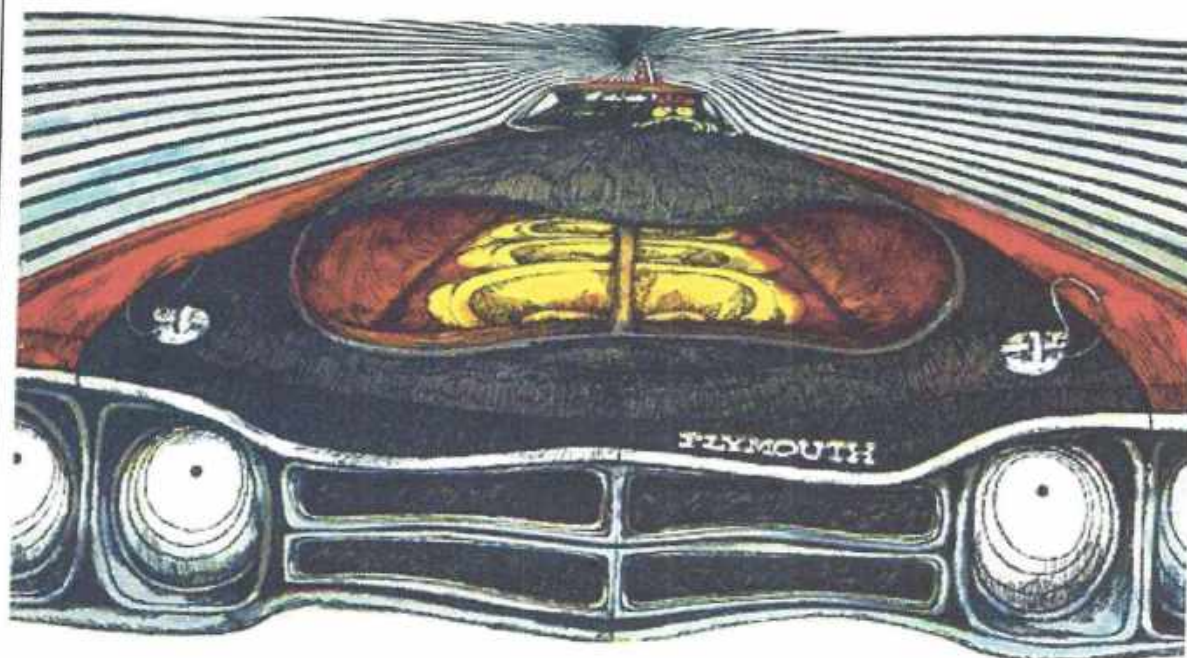
Transmission	Code	RM21	RM23	WM21	WM23	Total	%
4-speed cars known	D21	64	77	50	162	353	47.57%
Automatic cars known	D32	47	67	32	101	247	33.29%
Cars with unknown trans	N/A	21	39	26	56	142	19.14%
Cars known to exist		132	183	108	319	742	22.36%
4-speed produced by Chrysler		388	422	267	826	1903	57.34%
Automatic produced by Chrysler		227	355	153	661	1396	42.06%
4-speed % accounted for		16.49%	18.25%	18.73%	19.61%	18.55%	
Automatic % accounted for		20.70%	18.87%	20.92%	15.28%	17.69%	
Total cars produced		615	797	420	1487	3319	
% accounted for		21.46%	22.96%	25.71%	21.45%	22.36%	22.79% Averaged
Built by Chrysler		Road Runners 1412		Super Bees 1907			
Updated 4/26/09							



A12 Package Estimated Color Reference as of 2012

Plymouth Color Name	Code	RM/21		RM/23		RM/23	RM/23	RM/23	RM/21	V/M/21		V/M/23		V/M/23	V/M/23	%
		D21	D32	D21	D32					D21	D32	D21	D32			
Bahama Yellow	96	0	2	6	10	26	16.72%	Blutterscotch	0	7	22	15	52	12.38%	29.10%	
Rallye Green	97	13	10	15	14	52	16.72%	N/A	N/A	N/A	N/A	N/A	0	0.0%	16.72%	
Platinum	A4	3	4	0	2	9	2.89%	Silver Metallic	0	1	1	0	2	0.45%	3.37%	
Ice Blue Metallic	B3	0	1	0	0	1	0.32%	Light Blue Metallic	0	0	0	0	0	0.0%	0.32%	
True Blue Metallic	B5	5	1	6	2	14	4.50%	Bright Blue Metallic	3	0	7	1	11	2.62%	7.12%	
Jamaica Blue Metal	B7	2	1	0	2	5	1.61%	Medium Blue Metal	0	0	0	0	0	0.0%	1.61%	
Frost Green Metallic	F3	0	1	3	1	5	1.61%	Light Green Metallic	0	0	0	1	1	0.24%	1.85%	
LimeLight Metallic	F5	1	0	2	0	3	0.96%	Medium Green Metal	0	1	0	0	1	0.24%	1.20%	
N/A		N/A	N/A	N/A	N/A	0	0.00%	Bright Green Metallic	11	12	54	29	106	25.24%	25.24%	
Ivy Green Metallic	F8	0	5	1	5	11	3.54%	Dark Green Metallic	0	0	5	0	5	1.1%	4.73%	
Vitamin C Orange I	K2	20	9	15	14	58	18.65%	N/A	N/A	N/A	N/A	N/A	0	0.0%	18.65%	
Seafoam Turquoise I	Q6	1	0	2	1	4	1.29%	Bright Turquoise Me	0	1	0	0	1	0.24%	1.52%	
Performance Red	R4	18	11	22	14	65	20.90%	Bright Red	10	4	38	32	84	20.0%	40.90%	
Scorch Red	R6	1	0	2	2	5	1.61%	Red	0	1	3	0	4	0.9%	2.56%	
Bronze Fire Metallic	T5	0	2	1	1	4	1.29%	Copper Metallic	2	0	2	0	4	0.9%	2.24%	
Saddle Bronze Met	T7	1	0	3	1	5	1.61%	Dark Tan Metallic	0	0	2	2	4	0.9%	2.56%	
N/A		N/A	N/A	N/A	N/A	0	0.00%	Heml Orange	23	13	53	36	125	29.76%	29.76%	
Alpine White	W1	2	1	3	5	11	3.54%	White	1	0	3	0	4	0.9%	4.49%	
Black Velvet	X9	5	2	0	5	20	6.43%	Black	0	2	4	0	6	1.4%	7.86%	
Sunfire Yellow	Y2	4	1	4	1	10	3.22%	Yellow	1	2	1	6	10	2.35%	5.60%	
Spanish Gold Metal	Y4	0	1	2	0	3	0.96%	Light Gold Metallic	0	0	0	0	0	0.0%	0.96%	
Cars with known VIN#	CO	84	52	95	80	311	22.03%		59	44	196	122	420	22.02%		
		368	227	422	375	1412		Total cars produced	267	163	326	661	1907			
		21.65%	22.91%	22.51%	21.33%	22.03%		% accounted for	22.10%	28.76%	23.51%	13.45%	22.02%			
		Total Ford Runners built 1412													Total Super Bees built 1907	

Updated 2.4.12 by Dave Watt
 **For a car to be added to this spreadsheet, I need the full Vehicle Identification Number (VIN), the paint code, and transmission information **
 Cars on this spreadsheet 731



ETS AND SPECS ON OUR NEWEST ROAD RUNNER:
 440 CUBES, GLASS HOOD AND (HEH-HEH!) THREE HOLLEYS!

PLYMOUTH TELLS IT LIKE IT IS.

Special Features:

440 cu. in. V-8, standard.
 Edelbrock "6-bbl." Hi-Rise intake manifold, standard.
 Three Holley 2-bbl. carbs, standard.
 Special low-taper 276°-292°-.54° camshaft, standard.
 Special hydraulic tappets, standard.
 Chromed intake and exhaust valves, standard.
 Hemi valve springs, standard.
 Fiberglass hood with Super Stock air scoop, standard.
 Four pin-type hood latches, standard.
 Low-restriction "Air-Grabber"-type air cleaner, standard.
 4, 10:1 Sure-Grip rear axle, standard.
 Dual-breaker distributor, standard.
 Heavy-duty 26" radiator, standard.
 Viscous-drive fan, standard.
 4-speed with Hurst shifter or Torque-Flite automatic, standard.
 Extra-heavy-duty "Hemi" suspension, standard.
 Heavy-duty 11" drum brakes, standard.
 Extra-wide 15 x 6" rims, standard.
 Extra-fat G-70 x 15" Polyglas Red Streak tires, standard.

Drag Test:

Date: March 31, 1969
 Location: Cecil County Dragway
 Test car: 440 6-bbl. Road Runner (4-speed)

Options on test car: power brakes, power steering, radio, heater, exterior decor package, lighting package.

Weight: 3,765 lbs.

Remarks: Test car in absolutely pure-stock condition—air cleaner and mufflers operating, street tires only; no special tuning.

Witnessed by: Jim McCraw and Roland McGonagal, Super Stock Magazine.

Professional Driver: Ronnie Sox

Run #	ET/Secs	Trap Speed/mph
1	13.21	110.02
2	13.24	110.42
3	13.24	110.29
4	13.22	109.89
5	13.12	110.83
6	13.02	111.52
7	13.14	110.70
8	13.22	111.11
9	13.00	111.52
10	13.00	110.15
Average:	13.14	110.65

Amateur Driver: Roland McGonagal

Run #	ET/Secs	Trap Speed/mph
1	13.95	107.27
2	13.32	109.89
3	13.42	109.22
4	13.48	109.75
5	13.33	110.42
Average:	13.50	109.31

Beep-Beep your what?? To say our new 440 Six-Barrel is the Hot setup is the understatement of the year. Go to show that nothing shrinks time and distance like cubic inches and a good induction system. Best of all, the whole rig costs a couple of hundred skins less than a Hemi! When you get yours and decide to see what she'll do, just follow our example and do it at a sanctioned strip. Saves wear and tear on the ol' driving record. Dig?

Plymouth





64-302-7020 (8-42)

BELVEDERE

SPECIAL CAR ORDER

MODEL	BODY TYPE	MAKE	TRIM	NO. UNITS	DATE	PLANT	NO.	SPECIAL ORDER NO.
R 63	M21 & M23			100	2-21-69	L.R.A.		329-949001-949100
EQUIP. SALES CODES	RECEIVED ADDED INSTRUCTIONS ON OPTIONS EQUIPMENT FROM TRACK SHEET BROADCAST							
EQUIP. AVAIL. NO.	SPECIAL FEATURES							EX FACTORY DATE

1.R69-4257

SAFETY/FEDERAL STANDARES AFFECTED
 FURNISH AND INSTALL SPECIAL 440 C.I.D. ENGINE WITH 3-2
 BBL. CARBURETORS, 4 SPEED MAN. TRANS., AND FIBERGLASS
 HOOD WITH AIR SCOOP FOR A ROAD RUNNER.
 REF: PRODUCT PLANNING LETTER SE-29 DATED 10-3-68
 NOTES: - NOT AVAILABLE WITH AIR CONDITIONING, AUTOMATIC
 SPEED CONTROL, DISC BRAKES AND TRAILER TOWING PACKAGE.
 - AIR SCOOP AND PERFORMANCE AXLE ARE PART OF PACKAGE. DO
 NOT USE CODES N96, A31, A32, A33, A34, OR A36. THE
 FOLLOWING SALES CODES ARE MANDATORY AND MUST APPEAR ON
 SPECIAL CAR ORDER:

SALES CODE	DESCRIPTION	SALES CODE	DESCRIPTION
A12	PACKAGE SALES CODE	J25	THREE SPD. W/PI
D21	4 SPEED MANUAL	N51	MAX. COOLING
D69	SPECIAL ORDER RR. AXLE	N65	TORQUE FAN
D91	SURE GRIP DIFF.	U7S	SPEC. ORD. TIRE
E63	383 4 BBL. ENG.	Y39	SPECIAL ORDER

-PROPELLER SHAFT BUILT CODE 560 AND SPEEDO PINION BUILD
 CODE XT40 MUST APPEAR ON ORDER.
 -V.I.N. ENGINE DIGIT MUST BE CHANGED FROM "H" TO "M" (SPL.
 ORD.-8 CYL.) BY USE OF PKG. CODE A12.
 -MONRONEY LABEL TO SHOW A12 WITH TITLE SUPPLIED BY PLYMOUTH
 DIST. (J. CANDLER) AND PRICE BY CORPORATE PROFIT ANALYSIS
 (A. E. VON STEEG)
 -PLYMOUTH DIST. (C. CASE) TO FURNISH PLYMOUTH SERVICE (G. IRWIN)
 A DAILY LIST OF VEHICLES SHIPPED, SHOWING DATE SHIPPED, DLR.
 CODE AND S.O. NUMBER.
 PER CHRYSLER CORPORATION PRODUCT PLANNING TECHNICAL SERVICES
 FLEET ENGINEERING GROUP RELEASE E-101.
 PARTS RELEASED, REWORK, AND INSTALLATIONS COVERED BY THIS
 INQUIRY COMPLY WITH FEDERAL AND SAFETY REQUIREMENTS WHERE
 APPLICABLE.

PLT. DISTRIBUTION	COPIES
BODY BY WHITE	
PLANT	
TRIM	
CHASSIS	
FRONT END	
NEW CAR SERVICE	
DEPT. DEALER NAME	

S. O.# 329 949001-949100

(100 UNIT)

STATE	DEALER NO.	AUTHORITY	DELIVERY REQUIREMENTS	APPROX. MONTH OF MARCH
CUSTOMER	ORDER NO.	PLANT APPROVAL	REMARKS	
	REGION			




Product Planning Information:


<p>CHRYSLER CORPORATION PRODUCT PLANNING TECHNICAL SERVICES FLEET ENGINEERING</p>	<p>DESCRIPTION & REMARKS</p> <p>Release of a special 440 Engine with aluminum intake manifold and three-two bbl. carburetors. Also fiberglass hood with air scoop.</p>	<p>GROUP RELEASE</p> <p>E-101</p> <p>INQUIRY: ERAY 4257, EMAY 4258 ERAY 4255, EMAY 4256</p> <p>MODELS: 863 M21, 23; 463 M21, E3</p>
	<p>INSTRUCTIONS</p> <ol style="list-style-type: none"> The affected models are to be built at Lynch Road Assembly Plant. The Special Orders on these cars with three two barrel carburetors is to be installed. Trenton Engine Plant will provide the special engines which replace the coded E-63 engines. Lynch Road Assembly will install normal 383 C.I.D. Engine 'B' Body Engine Dress-Up Parts, plus substitutions and deletions shown in the attached parts list. The 440 C.I.D. B-Body dual exhaust system, fuel vapor separator, fuel return tube, and fuel tank assembly are to be used same as on GTX or R/T cars with Engine Code E-86. A total of four different carburetors are required for this project, one for the front used with manual or automatic transmission, a second for the rear also used with either transmission, and two different center carburetors - one for each transmission. A special air cleaner to accommodate the three carburetors is required. Lynch Road Assembly is to install the special Air Cleaner Dogal. Locate Decal on air cleaner cover, forward of front attaching stud. To permit reading from front of car. A special throttle control system is used for manual transmissions and a different special one is used for Automatic Transmissions. See 3418875 Control Adapt. - Throttle for cars with Manual Transmissions and 3418876 for cars with Automatic Transmissions. Adjusting the linkage for the three carburetors is to be done per Process Standard P.S. 5114 and attached copy of HSC 2929900 Sec. 308068. Sht. 2-50. (See Sheet 37). The Ignition Coil is to be attached to the right rear side of the engine intake manifold, using the standard coil mounting bracket attached to a special bracket Assy. - 3-18-66 with the entire assembly mounted on the right rear attaching studs of the intake manifold. 	
<p>P.F. FED. OR SAFETY</p>	<p>RELEASED: 1-15-69</p> <p>CHANGES:</p> <p>NOTES:</p> <p><i>D. J. Keenan</i></p>	

<p>CHRYSLER CORPORATION PRODUCT PLANNING TECHNICAL SERVICES FLEET ENGINEERING</p>	<p>DESCRIPTION & REMARKS</p> <p>Release of a special 440 Engine with aluminum intake manifold and three-two bbl. carburetors. Also fiberglass hood with air scoop.</p>	<p>GROUP RELEASE</p> <p>E-101</p> <p>INQUIRY: ERAY 4257, EMAY 4258 ERAY 4255, EMAY 4256</p> <p>MODELS: 863 M21, 23; 463 M2</p>
	<p>INSTRUCTIONS CONTINUED</p> <ol style="list-style-type: none"> See attached drawing 3412460, sheet 36, for the installation of 3412458 Wire - Assy. - Ballast Resis to Ignition Coil. A carburetor shut off solenoid is used. The solenoid assembly is attached to the intake manifold on left side just below the center carburetor with two screws 6023428. The Wire Assy. - Carb. Shut-Off Solenoid 3412459 is held securely to the left cylinder head cover by nylon Clip 6015625. This clip has an adhesive material on one side and may be attached to the cover removing the protective paper and pressing the clip on the cover. See attached drawing 3412450 on sheet 36, for routing of wire from solenoid to voltage regulator. Install fuel lines to carburetors in accordance with 'F' Series Chassis Graphic Manual 3411001, Sect Page 3.40 which is correct for this application except carburetor part numbers. Install two (front and rear) 2465134 Hose - Signal Vacuum and one 1941568 Clip - Signal Vacuum Rear to Rear Carb. Fuel Line as shown in 'F' Series Chassis Graphic Manual 3411001, Section 3CB12, Page - Items #11 and #12 only. These vehicles require a special 4.10 ratio, Dana, 9.75 Ring Gear, Sure Grip Rear Axle with Heavy Duty 11 x 2.5 M.A. brakes. Prop shaft assemblies required are the same as normally used with the 426 E74 and 440 E86 engine 'B' cars. G70-15 Red Stripe Goodyear Custom Wide Tread Polyglas tubeless tires with 15 x 6 JJ H.D. wheels are Front suspension lower control arm bumper spacers 2071727 (.224 thick) placed under each 2535027 Ass Front Susp. Lower Control Arm Bumper are required to provide running clearance for the G70-15 wide tread tires. The standard Hub Caps are to be deleted. Chrome styled wheel mounting nuts are to replace the standard wheel mounting nuts. All wheels to be painted black regardless of body color. A 40 tooth speedo-pinion is required. 	
<p>P.F. SAFETY</p>		



Product Planning Information Cont.

 CHRYSLER CORPORATION PRODUCT PLANNING TECHNICAL SERVICES FLEET ENGINEERING	DESCRIPTION & REMARKS Release of a special 440 Engine with aluminum Intake manifold and three-two bbl. carburetors. Also fiberglass hood with air scoop.	GROUP RELEASE E-101 SHEET 13 of INQUIRY: ERAY 4257, EMAY 4258 ERAY 4255, EMAY 4256 MODEL: R63 M21, 23; W63 M21.
	INSTRUCTIONS CONTINUED	
P.F. FED. OR SAFETY	20. The new automatic transmission (Sales Code B34) is used on these cars as is used with an E63 engine. When a 4 speed manual transmission is specified (Sales Code D21), use 3410605 Assembly in place of Assembly 3410603.	
	21. <u>Hood Pin Installation</u> <ol style="list-style-type: none"> a. Two Special Hood Retaining Brackets J412415 are installed on the fender side shields, using the two rear of the three holes normally used to attach the hood hinge assemblies. Use 4 of the same attaching screws (6025352) and J-Nuts (6025510). b. Drill a .62 dia. hole in each 2949262 Rt. & 2946263 Lt. Brkt. - Fender Radiator Yoke G/Member on the Road Runner (See Sheet #35). On the Super Bee Model open up the center of the inboard slot of 2949264 Rt. & 2949265 Lt., with a .62 dia. drill, thru the upper flange of the radiator yoke. (See Sheet #34.) c. Four 3412411 Stud Pins - Hood Hold Down Locks are installed in the brackets of instruction (a.) in the .62 dia. holes added in instruction (b.) as follows: <ol style="list-style-type: none"> (1) Run a nut 118647 on each pin, place a lock washer 135629 under the nut, and insert the entire assembly in the .62 dia. hole with the threaded end of pin downward. (2) Place Lock Washer 135629 and Nut 118647 on bottom of Pin. (3) Adjust Pin to proper height and tighten nuts securely. d. Install hood hold down Stud Pin Bumpers made of 5/8 I.D. Heater Hose by placing a spacer 120396 on top of each top stud pin jamb nut and inserting bumper over each Stud Pin 3412411. Bumper 327726 (2.00 long) is used on all four 'Road Runner' pins and on the two rear pins of the 'Super Bee'. Bumper 1947467 (1.50 long) is used on the two front pins of the Super Bee. 	

 CHRYSLER CORPORATION PRODUCT PLANNING TECHNICAL SERVICES FLEET ENGINEERING	DESCRIPTION & REMARKS Release of a special 440 Engine with aluminum intake manifold and three-two bbl. carburetors. Also fiberglass hood with air scoop.	GROUP RELEASE E-101 SHEET 14 of INQUIRY: ERAY 4257, EMAY 4258 ERAY 4255, EMAY 4257 MODEL: R63 M21, 23; W63 M2
	INSTRUCTIONS CONTINUED	
P.F. FED. OR SAFETY	22. Fiberglass hoods with Air Scoop will replace the standard sheet metal hoods released for these models. The hood assemblies are to be received at Lynch Road Assembly Plant with a dull non-reflective black exterior paint. Extreme caution must be exercised in the handling of these hoods, to prevent damage: scratching, scuffing, or gouging.	
	23. Install two decals on each hood per styling drawings listed on sheet 30 for 'M' and sheet 31 for 'R'. 24. The fiberglass hood assemblies are to be assembled over the four stud pins, and retained by 'Hair Pin' fasteners which are attached to the hood with cable lanyards ('A' Body glove box cables). 25. The center exterior area of the cowl panels is to be painted with # (Info. to follow). 26. Do not drill two (.156) dia. holes in each 'Super Bee' fender normally used to accommodate the Fender Side Nameplate 1383 - Magnum #3444957. 27. The Monroney Price Label is to show Code A12 Special Engine. 28. The VIN Serial Number is to contain the letter 'M', under the 5th digit callout, signifying that the engine is a special order 8 cylinder, rather than the 383 C.I.D. high performance letter 'H'. 29. Plant Distribution to furnish Car Division Service Departments a daily list of vehicles shipped, showing date shipped, Dealer Code and S.O. number. Car Division Service Departments will forward to the delivering dealer a revised copy of the Warranty Booklet 81-970-9019, for each vehicle shipped.	



Vehicle Condition Rating Scale

The following table was use in the evaluation of the above vehicle

Condition Scale	
1	Restored to current maximum professional standards of quality in every area, or perfect original with components operating and appearing as new. A 95-plus point show car that is not driven
2	Well-restored, or a combination of superior restoration and excellent original. Also, an extremely well-maintained original showing very minimal wear. Many aftermarket items.
3	Completely operable original or "older restoration" showing wear. Also, a good amateur restoration, all presentable and serviceable inside and out. Plus, combinations of well-done restoration and good operable components or a partially restored car with all parts necessary to complete and/or valuable NOS parts. Good survivor
4	A drivable vehicle needing little or only minor work to be functional. A deteriorated restoration or a very poor amateur restoration. All components may need restoration to be "excellent", but the car is mostly useable "as is".
5	Needs complete restoration of body, chassis and interior. May or may not be running, but isn't weathered, wrecked or stripped to the point of being useful only for parts

Conditions of Review

MMC Detroit LLC, disclaims any warranty, either expressed or implied. MMC Detroit LLC., does not assume or grant any other parties liability in relation with the sale of this vehicle. MMC Detroit makes no representation and disclaims all express, implied and statutory warranties of any kind to the user and/or any third party, including any warranties of accuracy, timeliness, completeness, merchantability and fitness for a particular purpose.

The record of this review by the MMC Detroit LLC representative and applicable photographs will remain on file in our office for a minimum period of 3 years. This report replaces any previous MMC Detroit reports that may have existed

The vehicle review was conducted based on our experience, knowledge, logic, information available and known data at the time of the inspection. We reserve the right to amend the inspection report should information relating to the vehicle authenticity be discovered or presented to us after the inspection has been completed. The findings will be communicated to the original requester of the report.

Most vehicles have traded hands to many individuals through the years and there are some individuals in the collector car hobby that go through pain staking efforts to ensure that every detail is accurate within a nano-micron to the factory process in an effort to deceive or misrepresent the vehicle. This is sometimes challenging to initially detect during the initial review. It is also illegal to intentionally misrepresent a vehicle in most states and countries.

This amendment process is important because in most cases the vehicle is not in an environment nor will the owner allow a forensic study conduct on key items like the VIN tag, trim tag, body stamping numbers, Broadcast sheets, manufactures certification label, powertrain stampings etc. Continuous improvement in reproduction stamps, tags, documentation technology is not for the greater good over the long run, anyway! We do not endorse it.

The amending of the vehicle report will be done in the spirit of continuous improvement in an effort to enhance the car collection experience for current and future owners. Any additional reviews requested at the owner of this car will be at extra cost. Please contact MMC Detroit to ensure that you have the latest report if the current date is beyond the date on the report.

This vehicle has been recorded in the MMC Detroit Vehicle Registry



MMC Detroit :

MMC Detroit LLC
Job #0819-2602
www.MMC Detroit.com

Serving the Mopar Collector Hobby Since 1952.

Our family has specialized in all aspects of Chrysler, Imperial, Dodge and Plymouth cars since 1952 out of our base operation in Detroit, Michigan, the "Home of the Motor City".

We offer services ranging from appraisals, authenticating, quality inspector, validation, pre-purchase inspections, expert witness, restoration consulting and local and national show judging. MMC Detroit also has developed and published many world class restoration reference manuals that help serve and support the Mopar enthusiast. These manuals are highly detailed, and provide an unprecedented level of information unlike any other manuals in the collector car hobby.

We pride ourselves at keeping informed with all facets of the Mopar automobile hobby relating to muscle/collector cars in order to stay current with the pulse of the hobby and pass valuable information onto our customers. When only the best will do please reach out to us to assist with your Mopar needs.

Mission Statement :

To continuously strive to enhance and advance the Mopar Automobile collector hobby.

Our Quality Policy :

To provide products and services that meet or exceed your expectations at a fair price.

Our Goal :

To be a trusted resource for reliable information, products, and services.

Our Objective :

To share the information and knowledge acquired since 1952 and provide a customer experience second to none. We have established a web site (www.mmcdetroit.com) that has been developed to be the best source to obtain information relating to all aspects of Mopar automobile hobby from restoration services, parts dealers, car registries etc

Please feel free to contact us for your needs at info@mmcdetroit.com



Original MMC brand logo 1952



Reference Manuals for Chrysler, Dodge and Plymouth

MMC Detroit have been writing one of a kind world class documents and reference manuals for over 25 years. We are continuously upgrading our existing manuals and developing new manuals. No one in the Mopar collector car hobby writes and publishes more objective reference material and us. Visit us as mmcdetroit.com for the complete collection of reference material.

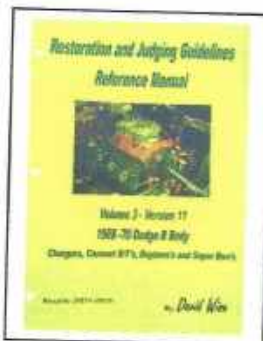
It is important to *"Fill your library before your fill your garage"*.



Fastener Reference Manuals

Each manual contains individual section related to the engine, engine accessories, engine compartment, axle, transmission, front suspension, rear suspension, trunk, interior, gauges, seats, radio, exhaust, fuel, brakes, exterior, grille, tail lights, frame, bumpers, doors etc. Over ~ 750 black and white pages and 5,000 images.

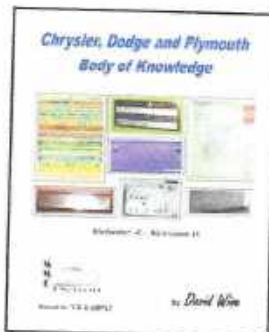
- 1970-74 E body FMEX-1
- 1968-70 Dodge B body FMDX-2
- 1968-70 Plymouth B body FMPX-3
- 1972-82 Dodge and Plymouth Truck and SUV



Restoration and Judging Reference Manuals.

Each manual contains individual section related to the, engine, engine accessories, engine compartment, axle, transmission, front/rear suspension, interior (dash, gauges, console, seats, radio etc.) trunk, glass, stripes, mirror, exterior, fuel, brakes, exhaust, grille, tail lights, frame, bumpers, doors, tires and wheels. They also included paint identification markings, inspector stamps, paint, production information, date codes etc. Over ~2100 black and white pages and thousands of photographs.

- 1970-74 E body JME-1
- 1968-70 Dodge B body JMD-2
- 1968-70 Plymouth B body JMP-3
- 1971-74 Dodge B Body



Chrysler, Plymouth and Dodge Body of Knowledge

This is a full size guide with black and white pages with thousands of photographs to help understand the important fine points including vehicle VIN's, trim tags, die lot stamp numbers, frame configuration, engines, axles, transmissions etc. and many other items. It briefly covers cars and trucks from the 1920's- 2015. However, the sweet spot of this information is from 1960-74. This manual gives you a brief overview of many important items to review throughout many years and is over 750 pages.

- **Body of Knowledge. VBX**



The Original Field Guides

This is a handy pocket size guide is easy to travel with where every you go. It includes 1000 color photos to help understand the important fine points of a vehicle including VIN's, trim tags, die lot stamp numbers, frame configuration, engines, axles, suspension transmissions, interiors etc. and many other items.

- **Dodge and Plymouth 1962-74 Field Guide FG-16 (108 pages)**
- **E bodies 1970-74 FGE-16 (124 pages)**
- **B bodies Dodge and Plymouth 1968-70 FGB-16 (128 pages)**



Mopar Vehicle Valuation Reference

This information will provide you with some insight into better understanding how to establish the approximate value of a vehicles compared to other similar vehicles in the market place. However, please keep in mind that there are many variables to consider and this is just a guideline.

The first item to consider is the total production of the vehicle. If a vehicle was produced in very small quantities (under 200-300 units) and is highly desirable like a 1970-71 Hemi Cuda Convertible it may not be as strongly affected by a non-numbers matching powertrain component as a more common or less popular model (i.e., base model Road Runner, Super Bee, Charger, Cuda's, Challengers, station wagons, Vans, pick-up trucks etc) might be. The extremely rare vehicle will always be in a category all their own and establishing the true value is very challenging.

Partial factory or dealer documents, rusted or partially legible VIN or trim tags, unreadable numbers stampings on drivetrain parts or the body will impact collectability and the value of a vehicle. The clarity and correctness is of utmost importance in estimating the value of a vehicle.

The following is a list of items to consider and their estimated value by being present.

• Original legible factory production broadcast sheet:	Add 10%
• Original factory vehicle traveler:	Add 1- 2%
• Original consumer information sheet:	Add 2-3%
• Original factory in process inspection documents:	Add 1-2%
• Original hardware and final line build sheet:	Add 10%
• Original IBM card(s):	Add 1- 2% / card.
• Original monroney (Window/suggested list price) sticker:	Add 4%
• Original certicard (1964-68) and/or Warranty Car:	Add 2 - 3%
• Original manufacturer door decal(>1969):	Add 2 - 3 %
• Original advanced dealer shipping notice:	Add 1%
• Original Chrysler issues invoice to the dealer :	Add 1%
• Original new car preparation sheet:	Add ½ -1%
• Original glove box packet (owner's manual and info):	Add 1/4 %
• Desirable paint colors (i.e. High impact, black etc...)	Add +5%
• Non matching engine: (>1967)	Deduct 15%
• Non matching transmission: (>1967)	Deduct 10%
• No trim tag	Deduct 3-5%
• Missing primary and/or secondary body numbers:	Deduct 25%+

Other consideration in establishing the value

- Vehicle Provenance. The more original factory paperwork always adds to the value of any vehicle.
- All original body panels, frame rails, floor pans etc...
- Original paint, "survivor" cars, factory promotional cars etc...
- Date and part numbers on components (the more the better).
- Correct original accessory and other components (the more the better).
- Having your vehicle validated/certified by a nationally recognized authority

There is this information in greater detail as well as much more information in the MMC reference restoration manuals that can be ordered on line at mmcdetroit.com web site.

Appendix:
Original Dealer Order Information

Series Differences • Equipment

BELVEDERE



Standard Equipment for Belvederes

- Standard 6-cyl. Engine: 225 cu. in., 145 horsepower • Standard V-8: 318 cu. in., 230 horsepower • 3-speed manual transmission • Dual braking system with self-adjusting brakes and brake system warning light • Safety-Rim wheels • Rotary safety door latches • Fresh-air heater and defroster • Fresh-air ventilators at each side of instrument panel • Color-keyed rubber floor mat • Front armrests • Rear armrests on 4-door sedan • Dome light with automatic front door switches • Backup lights • Turn-signal lights • Side marker reflectors • 2-speed, electrically operated windshield wipers • Safety-action inside door release handles • Ashtray in instrument panel • Ashtrays in rear armrests of 4-door sedan • Cigar lighter in instrument panel • Coat hooks • Glove box lock • Vinyl mat for trunk floor • Single horn • Three-spoke steering wheel with padded horn button • Hubcaps • Instrument panel safety padding • Day-Nite inside rearview mirror • Outside rearview mirror, left • Roadside warning flashers • Safety seat belts, lap and shoulder • Front seat-back latches on 2-door coupe • Padded sun visors • Front seat adjuster, manual 2-way • Foam padding in front and rear seats • Windshield washer, electric

Belv.-5

Equipment (CONTINUED)

ROAD RUNNER



Standard Equipment for Plymouth Road Runner

Same standard equipment as Belvedere with the following differences:

- Special high-performance Road Runner 383-cu.-in. V-8, 4-bbl. carburetor, high-performance camshaft, 335 horsepower • Standard Transmission: 4-speed manual with Hurst floor shifter, reverse warning light and shift pattern on knob • Special Road Runner insignia, outside and inside • Heavy-duty front and rear suspension with front anti-sway bar • Heavy-duty shock absorbers • 59-amp.-hr. battery • Heavy-duty brakes, 11" diameter, manual adjusting • Color-keyed carpeting (black with 4-speed manual transmission) • "Beep-Beep" horn

Special Standard Features on Hardtop and Convertible models and on Coupe with optional Decor Group:

- Deluxe all-vinyl seat style • Bright exhaust tips • Deluxe door trim • Bright-base armrests • Rear armrests with ashtrays • Bright door panel moldings • Three-spoke steering wheel with partial horn ring and large padded hub • "B" pillar molding (decor package only)

Convertible-Only Standard Features:

- Front compartment courtesy lights • Pocket panel lights • Power top lift

BELVEDERE SATELLITE



Standard Equipment for Belvedere Satellite

Same standard equipment as Belvedere with the following differences:

- Satellite-style interior and exterior trim • Color-keyed carpeting • Front and rear armrests with bright bases • Rear ashtrays on all models • Three-spoke steering wheel with partial horn ring and large padded hub • Dual horns

Engines and Transmissions

ENGINE	HORSEPOWER	AVAILABILITY	TRANSMISSIONS
225-cu.-in. Six	145	Standard on Belvedere and Satellite	Std.—3-speed manual Opt.—3-speed automatic
318-cu.-in. V-8	230	Standard on Belvedere, Satellite, and Sport Satellite	Std.—3-speed manual Opt.—3-speed automatic
383-cu.-in. V-8 2-Barrel	290	Optional on Belvedere, Satellite and Sport Satellite	Opt.—3-speed automatic
383-cu.-in. V-8 4-Barrel	330	Optional on Belvedere, Satellite and Sport Satellite	Opt.—3-speed automatic, 4-speed manual
383-cu.-in. V-8 4-Barrel	335	Standard Road Runner only	Std.—4-speed manual Opt.—3-speed automatic
440-cu.-in. V-8 4-Barrel	375	Standard GTX only	Std.—3-speed automatic Opt.—4-speed manual
426-cu.-in. V-8 Hemi, Two 4-Barrel	425	Optional on GTX and Road Runner only	3-speed automatic or 4-speed manual

Belv.-8

Air-Grabber System (optional on Road Runner and GTX; standard when 426 Hemi engine is ordered) takes air through hood-mounted air scoops and sends it directly to air cleaner. This outside air is cooler than air taken in from under the hood, so it is denser and makes a more powerful fuel mixture in the carburetor. Cable-operated control lets driver close scoops in rainy weather and when engine is cold.



Four-on-the-Floor has Hurst shift linkage, the shift pattern on shift knob and a warning light that glows red to alert the driver when the transmission is shifted into reverse. The floor shifter has a short-stroke lever and linkage for quick, smooth shifts.



All forward gears are synchronized so that the transmission can be smoothly downshifted into low while the car is still moving forward.

Belv.-13

3-Speed TorqueFlite . . . Automatic or Manual Shifting

TorqueFlite gives the driver the option of automatic or manual shifting . . . with either the column-mounted shifter or the console-mounted stick. For Automatic Control, the driver merely selects "D" (Drive Range) and TorqueFlite automatically upshifts from low to second to high as car speed increases.

Manual Control of TorqueFlite lets driver change gears by moving the shift lever. He can hold the transmission in low or second at speeds above the automatic shift limits; he can downshift quickly without flooring the accelerator; he can enjoy the sport of stick-shifting without losing the advantages of an automatic.

3-Speed Manual is rugged and economical. This transmission has stainless-steel synchronizer springs that assure shifting smoothness for the life of the transmission.

Performance Axle Packages

Where exceptional acceleration and rugged construction are essential, three performance axle packages are offered: Performance, High Performance and Super Performance.

Each package includes a 26"-wide, high-performance radiator and fan shroud with a 7-blade torque-drive fan; "Hemi" suspension and Sure-Grip differential.

Axle ratios available in these packages are 3.55, 3.91 and 4.10. The 4.10 Super Performance axle package includes power disc brakes and a 9 $\frac{1}{2}$ " Dana rear axle. The 3.55 and 3.91 axles have 8 $\frac{3}{4}$ " ring gears.



1969 GTX, Road Runner and Belvederes Standard and Optional Equipment

(For Station Wagon Equipment, see Station Wagon Section)

	GTX	Belve. Sport Satellite	Belve. Satellite	Road Runner	Belvedere		GTX	Belve. Sport Satellite	Belve. Satellite	Road Runner	Belvedere
Air Cond.—front unit—requires automatic trans. on GTX (NA w/Hemi or Air Grabber) (Tinted glass should be ordered)	E	E	E	E	E	Ash Receivers, rear door armrests or pocket panel	S	S	S	S(3)	S(3)
Air Grabber—engine cool air intake system (std. w/Hemi, NA w/AC or Auto Speed Control, requires 3-speed wipers)	E	NA	NA	E	NA	Automatic Speed Control—8-cyl. only—auto. trans. req'd and power brakes req'd w/383 or GTX. (NA 426 Hemi or Air Grabber)	E	E	E	E	E
Alternator—37 amp. (NA 8-cyl. w/AC)	S	S	S	S	S	Battery, 48 amp.-hr.	NA	S	S	NA	S
—46 amp. (std. w/8-cyl. w/AC)	E	E	E	E	E	59-amp.-hr. (Std. and available only w/383 eng.)	NA	E	E	S	E
Armrest—center folding with center seat cushion for bucket seats	E	E(6)	NA	E	NA	70 amp.-hr. (Std. on 440 & 425)	S	E	E	E	E
Center folding with bench seat	NA	S(2)	NA	NA	NA	70 amp.-hr. w/rubber separators & heat shield (w/trailer-towing only)	E	E	E	E	E
Armrests	NA	NA	NA	NA(9)	S	Brakes, Standard Self-Adjusting Heavy-duty manual adjusting (std. w/trailer-towing, NA w/disc brakes)	NA	S	S	NA	S
Front door—color-keyed base	NA	NA	NA	NA(9)	S	Disc, front—8-cyl. only. Power brakes req'd NA, w/H.D. brakes	S	E	E	S	E
—bright base	S	S	S	S(3)	E(1)	Bright Exhaust Tips	E	NA	E	E	E
Rear door and quarter panel	NA	NA	NA	NA	S(3)	Bumper Guards, front and/or rear	S	E	E	S(3)	NA
—color-keyed base	NA	NA	NA	NA	S(3)	Carpet Protection Mats	S	E	E	S	E
—bright base	S	S	S	S(3)	E(1)	Cigar Lighter	S	E	E	S	E
Pocket panel (Conv. only)	S	S	S	S	NA		S	E	E	S	E
Ash Receivers—front, instrument panel	S	S	S	S	S		S	E	E	S	E

- (1) Sedan only w/extra-cost, black all-vinyl trim only. (6) Hardtop and convertible, no-cost option on sedan.
 (2) Std. on Sport Satellite sedan. (7) Standard on coupe.
 (3) Extra cost on coupe.

Belv.-24

	GTX	Belve. Sport Satellite	Belve. Satellite	Road Runner	Belvedere		GTX	Belve. Sport Satellite	Belve. Satellite	Road Runner	Belvedere
Cleaner Air System	S	S	S	S	S	8-cyl. 426-cu.-in., 2-4-bbl., 425-hp. (NA 3-spd. man., AC, trailer-towing or auto. speed control.)	E	NA	NA	E	NA
Clock, Electric (NA w/tachometer)	S	S	S	S	S	Flashers, Roadside Warning	S	S	S	S	S
Closed Crankcase Vent System	S	S	S	S	S	Floor Covering (passenger comp.)	NA	NA	NA	NA	S
Coat Hooks	S	S	S	S	S	Color-keyed rubber mat (NA w/4-spd. man. trans.)	S	S	S	S(3)	NA
Console (NA 3-speed man. trans., or center armrest and seat) (requires bucket seats)	E	E(10)	NA	E	NA	Color-keyed formed carpet (NA w/4-spd. man. trans.)	S	S	S	S	S
Defogger, Rear Window (NA Conv.)	E	E	E	E	E	Black formed carpet (with 4-spd. man. trans. only)	S	S	S	S	S
Directional Signals	S	S	S	S	S	Floor Covering (trunk comp.)	S	S	S	S	S
Differential, Sure-Grip	E	E	E	E	E	Vinyl mat	S	S	S	S	S
Differential, H.D. Sure-Grip—incl. with Perf. Axle Pkgs. and Track Pak, only avail. in Track Pak w/440 and 426 w/4-speed manual. (5)	E	NA	NA	E	NA	Glass, Tinted	E	E	E	E	E
Engines						All windows (will be installed w/AC unless otherwise specified)	E	E	E	E	E
6-cyl. 225-cu.-in., 145-hp. (NA 4-spd. trans. or Trailer-Towing)	NA	NA	S	NA	S	Windshield only	E	E	E	E	E
8-cyl. 318-cu.-in., 2-bbl., 230-hp. (NA 4-spd. man.)	NA	S	S	NA	S	Glove Box Lock	S	S	S	S	S
8-cyl. 383-cu.-in., 2-bbl., 290-hp. (NA man. trans.)	NA	E	E	NA	E	Headlight-On Warning Signal	E	E	E	E	E
8-cyl. 383-cu.-in., 4-bbl., 330-hp. (NA 3-spd. man. trans.)	NA	E	E	NA	E	Heater & Defroster	S	S	S	S	S
8-cyl. 383-cu.-in., 4-bbl., 335-hp. (NA 3-spd. man. trans.)	NA	NA	NA	S(4)	E	Horn—single	NA	NA	NA	NA	S
8-cyl. 440-cu.-in., 4-bbl., 375-hp. (NA 3-spd. man. or 4-spd. man. w/AC)	S	NA	NA	NA	NA	—dual	S	S	S	NA	E
						Road Runner "Beep" "Beep"	NA	NA	NA	S	NA
						Hubcaps	S	S	S	S	S
						Hood Air Scoops (simulated)	S	NA	NA	S	NA
						Instrument Panel Safety Padding	S	S	S	S	S

- (4) Standard on Road Runner w/AC.
 (5) N.A. 4-door sedan.
 (6) Extra cost on coupe.

Bel.-25



Original Dealer Order Information Cont.

MMC Detroit LLC
 Job #0819-2602
 www.MMC Detroit.com

GTX, Road Runner and Belvederes Standard and Optional Equipment (Continued)

	GTX	Belve. Sport Satellite	Belve. Satellite	Road Runner	Belvedere		GTX	Belve. Sport Satellite	Belve. Satellite	Road Runner	Belvedere
Lights						Mirrors					
Backup	S	S	S	S	S	Inside, rearview, Day-Nite	S	S	S	S	S
Console courtesy (std. w/console)	E	E	—	E	—	Outside, left, manual	S	S	S	S	S
Dual brake system	S	S	S	S	S	Outside, left, remote control	E	E	E	E	E
Rear compartment	S	S	S	S	S	Outside, right, manual	E	E	E	E	E
Front courtesy (convertible)	S	S	S	S	—	Moldings					
Glove box*	E	E	E	E	E	Sill (narrow)	NA	NA	NA	NA	S
Instrument panel ashtray*	E	E	E	E	E	B-pillar	NA	S(2)	E	E	E(7)
Map—courtesy*	E	E	E	E	E	Custom sill (wide)	NA	S	NA	E	NA
Parking brake warning	S	S	S	S	S	Roof drip rail (std. Belvedere coupe)	S	S	S	S	E
Reverse warning light (w/4-spd. man. trans. only)	E	E	E	S	E	Beltline (std. Conv. NA 4-dr. Sed.)	E	E	E	E	E
Selector lever quadrant (w/auto. trans.)	S	E	E	E	E	Upper door frame (sedan)	NA	S	E	NA	E
Time delay ignition*	E	E	E	E	E	Wheel lip	S	S	S	NA	NA
Trunk compartment*	E	E	E	E	E	Full length body side	S	NA	S	NA	NA
Turn-signal indicator, fender-mounted*	E	E	E	E	E	Oil Filter, replaceable type	S	S	S	S	S
Underhood (dealer installed)	E	E	E	E	E	Paint—two tone (except conv.)	E	E	E	E	E
Light Switch, interior—front door	S	S	S	S	S	Paint—Performance hood	E	NA	NA	E	NA
—rear door	—	E	E	—	E	Treatment	NA	NA	E	E	NA
						Paint Stripes—single accent	NA	NA	E	E	NA
						—double	NA	S	NA	NA	NA
						—single reflective tape	S	NA	NA	NA	NA
						—double tapered reflective tape	NA	NA	NA	E	NA

* Available in package only.

(2) Std. on Sport Satellite sedan.
 (7) Coupe only.

GTX, Road Runner and Belvederes Standard and Optional Equipment (Continued)

	GTX	Belve. Sport Satellite	Belve. Satellite	Road Runner	Belvedere		GTX	Belve. Sport Satellite	Belve. Satellite	Road Runner	Belvedere
Suspension, H.D.—std. with Trailer-Towing. Includes: H.D. torsion bars; H.D. rear springs and anti-sway bar. (H.D. shock absorbers are available with this option).	NA	E	E	S	E	Vinyl "Mod Top" Floral Pattern Roof (incl. flower pattern seat and door trim panel inserts. HIT code only)	NA	NA	E	NA	NA
Suspension, Hemi (std. 440 & Hemi)	S	NA	NA	E	NA	Wheels, Cast Aluminum, Center—15" (H.D. Suspension and F70 x 15" tires req'd)	E	E	E	E	E
Tachometer—8-cyl. only (NA w/clock)	E	E	E	E	E	Wheels, Chrome-Plated Stamped Steel—14" (NA w/wheel covers or 426 Hemi)	E	E	E	E	E
Tires—See Index and Specifications Section.						Wheel Covers					
Transmissions						Deluxe 14"	NA	NA	E	NA	E
3-speed manual (NA 383, 440 or 426 Hemi eng. or Trailer-Towing)	NA	S	S	NA	S	Sport 14"	E	E	NA	E	NA
4-speed manual w/Hurst floor-mounted shift linkage, wood-grained shift knob and reverse warning light (NA 225, 318, 383 2-bbl. or Trailer-Towing)Track Pak req'd w/440 & 426	E	E	E	S	E	Deep dish—14" (7.75 x 14" tires req'd)	E	E	E	E	E
TorqueFlite automatic 3-speed	S	E	E	E	E	Windshield Washers—electric	S	S	S	S	S
Trailer-Towing Package (Auto. trans. only. NA 225 or 426)	E	E	E	E	E	Windshield Wipers, 2-speed	S	S	S	S	S
Undercoating and Hood Insulator Pad	E(8)	E	E	E(8)	E	3-Speed (Std. w/426 Hemi, req'd w/Air Grabber)	E	E	E	E	E
Vinyl Roof (sedans, coupes and hardtops)	E	E	E	E	E						

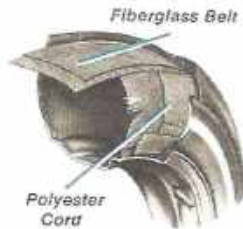
(8) Does not include hood insulator pad.

Features (Continued)

Engine Tachometer, optional with all V-8's, is a practical addition to the instrument cluster for the driver who wants to shift gears at particular engine speeds. The tachometer is not available with the optional clock.

Sure-Grip Differential greatly improves rear-wheel traction on loose or slippery surfaces. An internal clutching device maintains traction at both rear wheels so that the car will continue to move even though one wheel is on a slippery surface. For '69, a new cone-type clutch is used in the Sure-Grip differential to provide smoother transfer of driving torque.

Fiberglass-Belted Tires, optional on all Belvederes, have two fiberglass belts encircling the tire carcass to increase tire strength and durability. These tires increase tread life up to 40% over normal profile tires and up to 100% over wide-tread tires, provide better puncture resistance and have less rolling resistance than ordinary tires, providing increased fuel economy according to the manufacturers.



Belv.-90

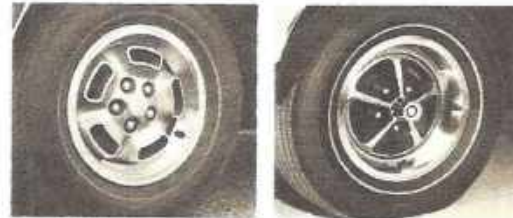
Optional Wheel Covers & Road Wheels



Deep-dish 14"

Sport 14"

Deluxe 14"



Cast Aluminum Center Wheel, 15"

14" Custom Road Wheel

GTX, Road Runner and Belvederes Accessory Groups & Packages

BASIC RADIO GROUP
(N.A. w/Hemi)

- Radio (select one):
 Solid-State AM
 Solid-State AM/FM
 Solid-State AM w/Stereo Tape
- Remote-Control Mirror—Outside Left
- Power Steering
- Windshield Wipers—3-Speed

LIGHT PACKAGE

- Ash Receiver Light*
- Fender-Mounted Turn-Signal Indicator Lights*
- Map-Courtesy Light*
- Glove Box Light*
- Rear Door Courtesy Light Switches* (4-door models)
- Trunk or Cargo Light*
- Ignition Switch Light with Time Delay*

*Available in package only.

TURNPIKE PACKAGE

(N.A. Road Runner, GTX or Trailer-Towing—Automatic Transmission Req.)

- 393 2-bbl. Engine
- Automatic Speed Control
- Power Disc Brakes
- Economizer 2.76 Rear Axle Ratio
- Headlights-On Warning Signal
- Undercoating and Underhood Pad

PERFORMANCE AXLE PACKAGE

(Available with 383 4-bbl. with 4-Speed Manual or TorqueFlite; 440 or Hemi w/TorqueFlite. N.A. with Wagon or Trailer-Towing)

- 3.55 H.D. Rear Axle Ratio, 8 $\frac{1}{4}$ " Ring Gear
- Sure-Grip Rear Axle
- 7-Blade Torque Drive Fan (Std. w/Hemi)
- 26" Hi-Performance Radiator w/Fan Shroud (Std. w/Hemi)
- Hemi Suspension (Std. w/440 and Hemi)

Belv.-29

HIGH-PERFORMANCE PACKAGE

(Available with 383 4-bbl. with 4-Speed Manual or TorqueFlite—N.A. w/AC, Wagon or Trailer-Towing)

- 3.91 H.D. Rear Axle Ratio, 8 $\frac{1}{2}$ " Ring Gear
- Sure-Grip Rear Axle
- 7-Blade Torque Drive Fan
- 26" Hi-Performance Radiator w/Fan Shroud
- Hemi Suspension

Steering Wheels

Standard Steering Wheel for Road Runner Coupe and Belvedere



Standard Steering Wheel for Road Runner Hardtop and Convertible, Satellite, Sport Satellite and GTX, optional on Belvedere Sedan and Road Runner Coupe



Deluxe Steering Wheel, optional all models

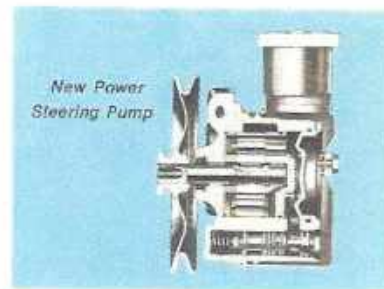


Sport Steering Wheel with Wood-Grained Appearance, optional all models

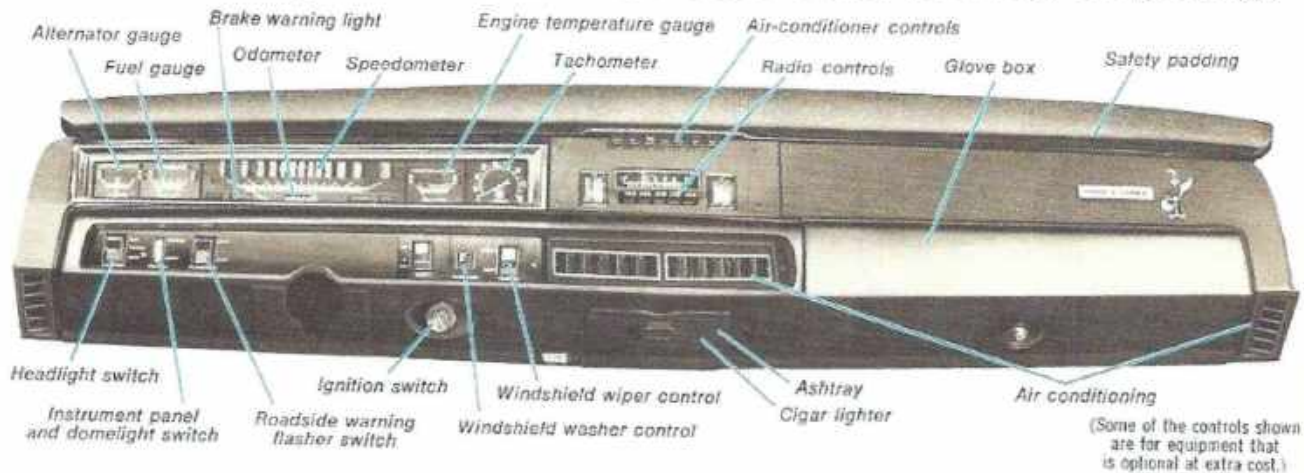
Belv.-15

Optional Power Steering reduces driver steering effort up to 80% and is equipped with a fast-ratio steering gear that provides quick steering response. Only 3.5 steering-wheel turns move the front wheels through their full range of travel.

The 1969 power steering unit used with most power steering applications has a new pump that develops greater pressure, providing a smoother and more constant power assist. The pump uses a "free" roller pumping action that reduces vibration and greatly extends pump and hose life.



1969 GTX, Road Runner and Belvederes Features



(Some of the controls shown are for equipment that is optional at extra cost.)

The Instrument Panel is designed for maximum convenience, visibility and safety. A large, rectangular speedometer with crisp, easy-to-read numerals is directly in front of the driver. Accurate gauges are used for engine temperature, alternator and fuel level. A warning light glows red if oil pressure is low. Rocker-type

switches operate the headlights, roadside warning flasher and windshield wipers. All controls and instruments can be easily seen from the driver's seat and are deeply recessed under thick instrument panel padding for the safety of passengers. An ignition switch light with a time delay, a glove box light and an ash receiver light are included with the optional light package.

Belv.-14



MMC Detroit LLC
 Job #0819-2602
 www.MMC Detroit.com

ROAD RUNNER *2-Door Hardtop, Convertible & 2-Door Coupe with Decor Group*

STANDARD: Vinyl split back bench seat 2-Dr. H.T. and Convertible
 OPT. GRP: Vinyl split back bench seat 2-Dr. Coupe with Decor Group



View Details and Options > 1000000000

ROAD RUNNER *2-Door Hardtop, Convertible & 2-Door Coupe with Decor Group*

STANDARD: Vinyl split back bench seat 2-Dr. H.T. and Convertible
 OPTIONAL: Vinyl split back bench seat 2-Dr. Coupe with Decor Group



H2T Tan: Exterior: 83, 85, 88, 91, 93, 98, 99, 201, 202, 93, 94, 201, 93



H2B Blue
 Exterior: 84, 85, 86
 Int: 91, 92, 93



H2G Green
 Int: 94, 95, 96
 Exterior: 81, 93, 95, 98
 Int: 95, 96, 97, 98, 99



H2S Pewter & Black*
 Int: 97, 98
 Exterior: 84, 85
 Int: 95, 96, 97
 Ext: 93, 94, 95, 96, 98, 99



H2X Black
 Exterior: 84, 85
 Runner Colors



ACCENT STRIPES & SPORT STRIPES

ACCENT STRIPES:

- All Accent Stripes are paint, except on Sport Fury.
- Sport Fury Accent Stripes are vinyl tape.
- All Accent Stripes consist of two narrow stripes, except on Satellite and Road Runner.
- Satellite and Road Runner Accent Stripes are a single narrow stripe.

SPORT STRIPES:

- All Sport Stripes are vinyl tape.
- All Sport Stripes consist of one wide and one narrow stripe, except on GTX.
- GTX Sport Stripe is a single wide stripe.

Both the accent stripes and sport stripes run along the side of the car.

SPORT FURY Accent Stripes—Standard

INTERIOR TRIM CODE	EXTERIOR COLORS																
	A4	B3	B5	B7	F3	F5	F8	L1	Q5	R6	T3	T5	T7	W1	X9	Y3	Y4
H6D	B	W	B	B	—	—	—	B	—	—	—	—	—	B	B	—	—
H6G	X	—	—	—	F	F	F	X	—	—	X	—	X	F	F	X	X
H6R	B	—	—	—	—	—	—	R	—	X	—	—	—	R	R	R	—
H6S	X	X	X	X	X	X	X	—	X	X	—	X	X	X	X	W	X
H6T	—	—	—	—	X	X	X	X	X	X	X	X	X	X	X	W	X
H6W	W	W	W	W	W	W	W	X	W	W	W	W	W	X	W	X	W
H6X	X	X	X	X	X	X	X	X	X	X	X	X	X	X	W	X	X

Accent Stripe Colors:

Code	Color
X	Black
W	White
R	Red
B	Blue
F	Green

GTX Sport Stripes—Standard (Red or White only, Reflective)

SPORT SATELLITE Accent Stripes—Standard

SATELLITE & ROAD RUNNER* Accent Stripes—Optional

ROAD RUNNER* Tapered Sport Stripes—Optional (Red or White only, Reflective)

INTERIOR TRIM CODE	EXTERIOR COLORS																	
	A4	B3	B5	B7	F3	F5	F8	L1	Q5	R6	T3	T5	T7	W1	X3	Y2	Y3	Y4
PGC H2C M6C	5	5	5	5	—	—	—	—	—	—	—	—	—	1	1	—	—	—
P6D P1R P2B H2D M6D M2D	1	5	1	1	—	—	—	1	—	—	—	—	—	1	1	—	—	—
RXF H2F M6F	5	—	—	—	5	5	5	—	—	—	—	—	—	4	5	2	2	—
P1A P3G H2G M6G	2	—	—	—	4	4	4	2	—	—	2	—	2	4	4	2	2	—
P6H H2H M6H	—	—	—	—	5	5	5	5	—	5	5	5	5	2	5	2	2	—
PER	3	—	—	—	—	—	—	3	—	5	—	—	—	3	3	—	2	—
P6S H2S M6S	2	2	2	2	2	2	2	—	2	2	—	—	—	2	5	2	2	—
P6T P3T H2T M6T W2T	—	—	—	—	4	4	4	2	2	2	2	2	2	2	1	2	2	—
P6V	3	—	—	—	—	—	—	3	—	5	—	—	—	1	1	—	—	—
P6W H2W M6W	5	5	5	5	5	5	5	5	5	5	5	5	5	2	1	2	2	—
P6X P3X H2X M6X W2X	2	2	2	2	2	2	2	2	2	2	2	2	2	2	1	2	2	—
F2Q	1	5	1	1	—	—	—	—	—	—	—	—	—	—	—	—	—	—

Recommended Accent Stripe Colors:

Code	Color
1	Blue
2	Black
3	Red
4	Green
5	White

Recommended Sport Stripe Colors:

Code	Color
3	Red
5	White

NOTE: Another color may be selected if recommended color is not desired.

*On Road Runner only 6th option may be selected.

†Road Runner Tape Stripe Color for X3 Exterior is White(5).



1969 GTX, ROAD RUNNER, AND BELVEDERES INTERIOR COLOR ACCENTS

C=Cloth V=Vinyl L=Light Med.=Medium Dk.=Dark

	Trim Code	Material	Seat Insert	Bolster	Carpets*	Instrument Panel and Shift Panel	Steering Wheel	Headlining* (Vinyl)
Blue	P25	C & V	Blue & Tan	Dk. Blue	Dk. Blue	Dk. Blue	Dk. Blue	Dk. Blue
	P26, H2B	V	Lt. Blue	Dk. Blue	Dk. Blue	Dk. Blue	Dk. Blue	Dk. Blue
	M2B, P2D	V	Dk. Blue	Dk. Blue	Dk. Blue	Dk. Blue	Dk. Blue	Dk. Blue
	H1B	C & V	Lt. Blue	Dk. Blue	Dk. Blue	Dk. Blue	Dk. Blue	Dk. Blue
Green	F2Q	V	Flower Pattern	Dk. Blue	Dk. Blue	Dk. Blue	Dk. Blue	Dk. Blue
	P3G	C & V	Green & Gold	Dk. Green	Dk. Green	Dk. Green	Dk. Green	Dk. Green
	P3G, H2G	V	Lt. Green	Dk. Green	Dk. Green	Dk. Green	Dk. Green	Dk. Green
	P4G, M2G	V	Dk. Green	Dk. Green	Dk. Green	Dk. Green	Dk. Green	Dk. Green
Pewter/Black	H1G	C & V	Lt. Green	Dk. Green	Dk. Green	Dk. Green	Dk. Green	Dk. Green
	P4S, P2L, M2L, M2S, H2S	V	Med. Pewter	Med. Pewter	Black	Black	Black	Black
Red	P4R	V	Med. Red	Med. Red	Dk. Red	Dk. Red	Dk. Red	Med. Red
Tan	P6T, P2T, H2T, M2T	V	Med. Tan	Med. Tan	Dk. Tan	Dk. Tan	Dk. Tan	Lt. Tan
	H1T	C & V	Med. Tan	Med. Tan	Dk. Tan	Dk. Tan	Dk. Tan	Lt. Tan
	P2T	C & V	Brown & Tan	Med. Tan	Dk. Tan	Dk. Tan	Dk. Tan	Lt. Tan
Black	P6X, P2X, H2X, M2X	V	Black	Black	Black	Black	Black	Black
	H1X	C & V	Black	Black	Black	Black	Black	Black
	P2X	C & V	Black & Gray	Black	Black	Black	Black	Black
White/Blue	P4C, P2C, H2C, M2C	V	White	White	Dk. Blue	Dk. Blue	Dk. Blue	Dk. Blue
White/Green	H2F, P2F, H2F, M2F	V	White	White	Dk. Green	Dk. Green	Dk. Green	Dk. Green
White/Red	P6V	V	White	White	Med. Red	Dk. Red	Dk. Red	Med. Red
White/Tan	P6H, P2H, H2H, M2H	V	White	White	Dk. Tan	Dk. Tan	Dk. Tan	Lt. Tan
White/Black	P6W, H2W, M2W	V	White	White	Black	Black	Black	Black
Blue	M2B	V	Dk. Blue	Lt. Blue	Blue/Black	Dk. Blue	Dk. Blue	Dk. Blue
	L2B	V	Dk. Blue	Lt. Blue	Blue/Black	Dk. Blue	Dk. Blue	Dk. Blue
	L1B	C & V	Lt. Blue	Lt. Blue	Blue/Black	Dk. Blue	Dk. Blue	Dk. Blue
Tan	M2T	V	Med. Tan	Med. Tan	Tan/Black	Dk. Tan	Dk. Tan	Lt. Tan
	L2T	V	Lt. Tan	Med. Tan	Tan/Black	Dk. Tan	Dk. Tan	Lt. Tan
	L1T	C & V	Med. Tan	Med. Tan	Tan/Black	Dk. Tan	Dk. Tan	Lt. Tan
Black	M2X, C2X	V	Black	Black	Black	Black	Black	Black

* Black carpets only with 4 speed manual transmission. † Floor covering is rubber mat.
 ‡ Wagon headlining perforated hardboard with white plastic bows. All convertible top linings and folding components are black.

Series	Trim Code
Sport Satellite & GTX	P6
Sport Satellite	P8
Sahibis	H2, M2
Mod Top Satellite	P2
Road Runner	H2, M2
Road Runner & Belvedere	M2
Belvedere	L1
Belvedere Sedan & Wagon	M2
Sport Satellite Wagon	P2
Belvedere Wagon	L2



MMC Detroit LLC
 Job #0819-2602
 www.MMC Detroit.com

1969 Plymouth Road Runner Exterior Paint Options

**INDEX
 NO. 14**



**1969 PLYMOUTH
 VALIANT — BARRACUDA
 BELVEDERE — FURY**

SPECIFY: DDL For DURACRYL® acrylic lacquer • DAR For DELSTAR® acrylic enamel • DQE For DITZCO® alkyl enamel
 Paint Code Paint Code Paint Code



A4 2016
 SILVER POLY



*K2 2201
 VITAMIN "C" ORANGE



W1 2033
 ALPINE WHITE



B3 2018
 ICE BLUE POLY



L1 22542
 SANDPIPER BEIGE



Y2 81574
 SUNFIRE YELLOW



B5 2019
 BLUE FIRE POLY



Q5 13534
 SEAFOAM TURQUOISE POLY



Y3 81575
 YELLOW GOLD



B7 2020
 JAMAICA BLUE POLY



*R4 71562
 BARRACUDA ORANGE



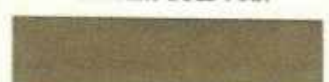
Y4 2034
 SPANISH GOLD POLY



F3 2023
 FROST GREEN POLY



R6 2029
 SCORCH RED



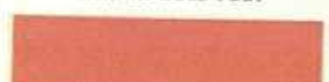
Y6 2102
 CITRON GOLD POLY



F5 2024
 LIMELIGHT POLY



T3 2030
 HONEY BRONZE POLY



*999 50436
 ORANGE



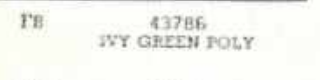
T8 43786
 IVY GREEN POLY



T5 2031
 BRONZE FIRE POLY



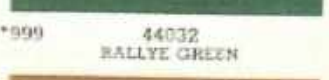
*999 44032
 RALLYE GREEN



X-9 5300
 BLACK VELVET



T7 2032
 SADDLE BRONZE POLY
 SINGLE TONE — X9-X9
 TWO-TONE — X9-W1



*999 81570
 BAHAMA YELLOW

ACCENT STRIPE COLORS
 LOWER BODY
 VALIANT, SIGNET,
 BARRACUDA, BELVEDERE

WHITE 2033
 BLACK 8000
 BRITE BLUE 13074
 GREEN 43820
 BRITE RED 71495

Exterior Organosol Black (DDL-9255)
 (Used on Organosol area
 on hood) for Belvedere

CORPORATE IDENTITY COLORS
 CORPORATE WHITE 8367
 CORPORATE BLUE 12785

FIRST TWO DIGITS ARE ACCENT OR
 ROOF COLOR
 SECOND TWO DIGITS ARE BASIC
 BODY COLOR

FOR SPECIAL COLORS (CODED 999)
 FURNISH SPECIAL ORDER (SO) NUM-
 BER AND SELLING DEALER WITH
 SERIAL NUMBER OF CAR

LOWER DECK PANEL AND
 HILL AREA
 ARGENT SILVER DX-8555

*SPRING COLORS

(OVER)

Printed in U.S.A.

PPG INDUSTRIES, Inc.
 DITZLER AUTOMOTIVE FINISHES • DETROIT, MICH. 48235 • TORRANCE, CAL. 90509

Form 8921
 Rev. 2/70

1969 Reference

Engine

- 897 - 383 4BBL, manual transmission, A/C, 330hp, Turquoise
- 899 - 383 4BBL, automatic transmission, A/C, 330hp, Turquoise
- 900 - 383 4BBL, automatic transmission, heater, 330hp, Turquoise
- 915 - 440 4BBL, manual transmission, heater, 375hp, Orange
- 916 - 440 4BBL, automatic transmission, A/C, 375hp, Orange
- 917 - 440 4BBL, automatic [transmission](#), heater, 375hp, Orange
- 921 - 426 Hemi, manual transmission, heater, 425hp, Orange
- 922 - 426 Hemi, automatic transmission, heater, 425hp, Orange
- 925 - 383 4BBL, manual transmission, heater, 335hp, Orange
- 926 - 383 4BBL, automatic transmission, heater, 335hp, Orange



Rear Axle

- 589 - 3.23 open, 8 3/4, 10" rear drums - front disc
- 591 - 3.55 s/g, 8 3/4, 10" rear drums - front disc (A36 Pkg)
- 592 - 3.23 s/g, 8 3/4, 10" rear drums - front disc
- 593 - 3.23 open, 8 3/4, 11" rear & front drums
- 594 - 3.55 s/g, 8 3/4, 11" rear & front drums (A36 Pkg)
- 595 - 3.23 s/g, 8 3/4, 11" rear & front drums
- 596 - 3.54 s/g, Dana 60, 11" rear & front drums (A33 Pkg)
- 597 - 3.54 s/g, Dana 60, 10" rear drums - front disc (A33 Pkg)
- 642 - 3.91 s/g, 8 3/4, 10" rear drums - front disc (A31 Pkg)
- 643 - 3.91 s/g, 8 3/4, 11" rear & front drums (A31 Pkg)
- 644 - 4.10 s/g, Dana 60, 10" rear drums - front disc (A32/A34 Pkg)
- 999 - 4.10 s/g, Dana 60, 11" rear & front drums (A12 Pkg)



[Transmission](#)

- 091 - 727 Automatic Transmission, 383-4BBL [engine](#)
- 093 - 727 Automatic Transmission, 383-4BBL & 440 HP engines
- 094 - 727 Automatic Transmission, 426 Hemi engine
- 603 - 833 4-speed Manual, 383-4BBL engine, (23 spline)
- 605 - 833 4-speed Manual, 426 Hemi & 440 HP engines, (18 spline)





CAR SERIAL NUMBER

The serial number located on the vehicle identification plate consists of a combination of thirteen letters and numbers. The first seven characters identify the carline, price class, body type, engine displacement, model year and the assembly plant. The last six digits indicate the car manufacturing building sequence.

EXAMPLE OF PLATE

Vehicle Number



FIRST DIGIT - CARLINE

- | | |
|----------------------------------|-------------------|
| B - Plymouth Barracuda | P - Plymouth Fury |
| V - Plymouth Valiant | C - Chrysler |
| R - Plymouth Belvedere/Satellite | Y - Imperial |

SECOND DIGIT - PRICE CLASS

<u>Digit</u>	<u>Price Class</u>	<u>Plymouth</u>	<u>Chrysler</u>	<u>Imperial</u>	<u>Station Wagons</u>
E	Economy	Fury I	Newport		Fury Suburban 2-Seat Astron Low & Country
L	Low	Fury II Belvedere Valiant V-200	Newport Custom		Fury Custom Suburban Belvedere 2-Seat
M	Medium	Fury III Road Runner	400	Crown	Fury Sport Suburban
H	High	Sport Fury Satellite Baracuda Valiant Signet	New Yorker	Laurel Satellite	
P	Premium	Fury MP Sport Satellite			Satellite Sport
S	Special	Sport Fury Fast Top GTX			
K	Police	Fury Belvedere			Fury 2-Seat Belvedere 2-Seat
T	Taxi	Fury Belvedere			
X	Fast Top	Fury III 2-Door			

D-2987-C



MMC Detroit LLC
Job #0819-2602
www.MMC Detroit.com

Date Code Reference General Information

We often receive questions as to if a vehicle has the correctly dated parts. The information below can be used as a guide for evaluating the parts on a vehicle. *Note: The information and illustrations below are just examples and are not from this vehicle.*

Engine Casting vs. Build Dates:

The standard range is typically around 30-90 days. The more common and high volume production engine (i.e., 318 or 383) the closer the casting date will be to the final assembly date of the engine.

Low production and high performance engines like the 440 +6 could be as high as 90-120 days and Hemi's have been found to be as much as 10-12 months early.

Engine Accessories:

The engine parts and accessories vary but typically they are near the casting date of the engine. However, some parts have both casting dates and assembly dates.

Part Casting Vs. Build Dates

Keep in mind that both dates have to be reviewed when looking at parts like alternators and starters as an example. The typical starter or alternator will have a casting date and an assembly date. Most people only look at the casting date and assume that it is correct because the year matches the year of the vehicle at it is in. However, typically upon further review the assembly date is not even close.



1969 alternator #28757749.
The assy date is 34th week of 1968 which is August 17-21.
The casting date= 7th month of 1968. This is a difference of 30 days between the casting and assy date.



Because the rare parts are getting hard to find and expensive people are re-stamping to make them look correct.



All water pump housings have a date code on them



Date Code Reference General Information

Most all parts on a vehicle have a date code on them. The following is a guide of the dates used by Chrysler and their suppliers on production parts.

Model Year	Digit	Series
1958	8	L
1959	9	M
1960	0	P
1961	1	R
1962	2	S
1963	3	T
1964	4	V
1965	5	A
1966	6	B
1967	7	C
1968	8	D
1969	9	E
1970	0	F
1971	1	G
1972	2	H
1973	3	J
1974	4	4
1975	5	5
1976	6	6
1977	7	7
1978	8	8
1979	9	9
1980	A	

Quarter	Numeric	Alpha	Month of year
1	1	A	January
	2	B	February
	3	C	March
2	4	D	April
	5	E	May
	6	F	June
3	7	G	July
	8	H	August
	9	J	September
4	10	K	October
	11	L	November
	12	M	December

Month	Week	Day Range	Month	Week	Day Range
Jan 1 - 7	1	1-7	July	27	183-189
Jan 8- 4	2	8-14	July	28	190-196
Jan 15 - 21	3	15-21	July	29	197-203
Jan 22- 28	4	22-28	July	30	204-210
Jan 29- Feb 4	5	29-35	July	31	211-217
Feb 5 - 11	6	36-42	August	32	218-224
Feb 12- 18	7	43-49	August	33	225-231
Feb 19- 25	8	50-56	August	34	232-238
Feb 26 - Mar 3	9	57-63	August	35	239-245
Mar 4 - 10	10	64-70	September	36	246-252
Mar 11 - 17	11	71-77	September	37	253-259
Mar 18 - 24	12	78-84	September	38	260-266
Mar 25-31	13	85-91	September	39	267-273
Apr 1-7	14	92-98	September	40	274-280
Apr 29- May 5	15	99-105	October	41	281-287
April 15 - 21	16	106-112	October	42	288-294
April 22 - 28	17	113-119	October	43	295-301
April 29 - May 5	18	120-126	October	44	302-308
May 6 - 12	19	127-133	November	45	309-315
May 13-19	20	134-140	November	46	316-322
May 20 - 26	21	141-147	November	47	332-329
May 27- Jun 2	22	148-154	November	48	330-336
June 3 - 9	23	155-161	December	49	337-343
Jun 10-16	24	162-168	December	50	344-350
Jun 17 - 23	25	169-175	December	51	351-357
Jun 24 - 30	26	176-182	December	52	350-356