

# FEMA Flood Map Service Center: Search By Address

Navigation

Search

Languages

[MSC Home \(/portal/\)](#)

[MSC Search by Address \(/portal/search\)](#)

[MSC Search All Products \(/portal/advanceSearch\)](#)

▼ [MSC Products and Tools \(/portal/resources/productsandtools\)](#)

[Hazus \(/portal/resources/hazus\)](#)

[LOMC Batch Files \(/portal/resources/lomc\)](#)

[Product Availability \(/portal/productAvailability\)](#)

[MSC Frequently Asked Questions \(FAQs\) \(/portal/resources/faq\)](#)

[MSC Email Subscriptions \(/portal/subscriptionHome\)](#)

[Contact MSC Help \(/portal/resources/contact\)](#)

Enter an address, place, or coordinates: ?

3207 ULLRICH RD CARMINE, TX

Search

Whether you are in a high risk zone or not, you may need [flood insurance \(https://www.fema.gov/national-flood-insurance-program\)](https://www.fema.gov/national-flood-insurance-program) because most homeowners insurance doesn't cover flood damage. If you live in an area with low or moderate flood risk, you are 5 times more likely to experience flood than a fire in your home over the next 30 years. For many, a National Flood Insurance Program's flood insurance policy could cost less than \$400 per year. Call your insurance agent today and protect what you've built.

Learn more about [steps you can take \(https://www.fema.gov/what-mitigation\)](https://www.fema.gov/what-mitigation) to reduce flood risk damage.

## Search Results—Products for FAYETTE COUNTY UNINCORPORATED AREAS

[Show ALL Products » \(https://msc.fema.gov/portal/availabilitySearch?addcommunity=480815&communityName=FAYE](#)

The flood map for the selected area is number **48149C0150C**, effective on **10/17/2006** ?

### DYNAMIC MAP



### MAP IMAGE



<https://msc.fema.gov/portal/downloadProduct?>

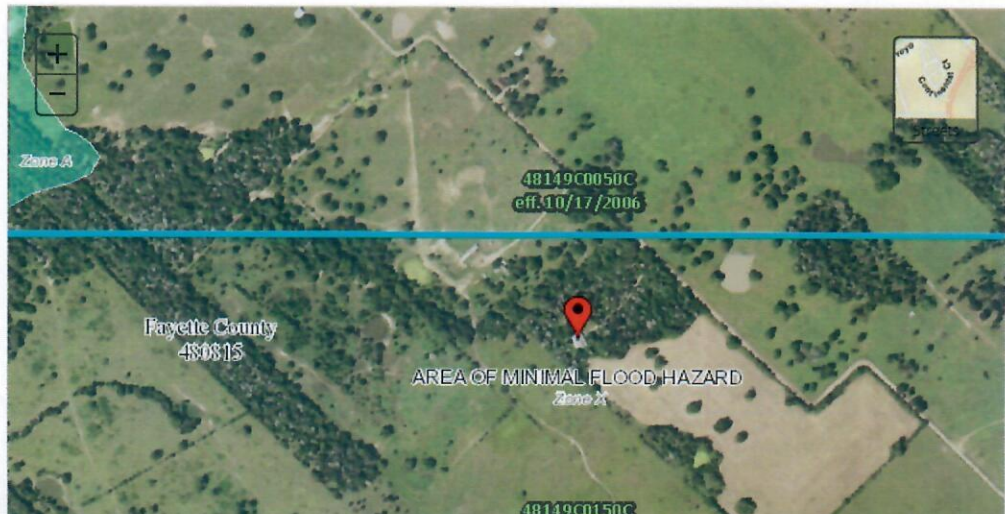
[filepath=/48/P/Firm/48149C0150C.tif&productTypeID=FINAL\\_PRODUCT&productSubTypeID=FIRM\\_PANEL&](#)

### Changes to this FIRM ?

- Revisions (0)
- Amendments (0)
- Revalidations (0)

You can choose a new flood map or move the location pin by selecting a different location on the locator map below or by entering a new location in the search field above. It may take a minute or more during peak hours to generate a dynamic FIRMette. If you are a person with a disability, are blind, or have low vision, and need assistance, please contact a map specialist (<https://msc.fema.gov/portal/resources/contact>).

[Go To NFHL Viewer » \(https://hazards-fema.maps.arcgis.com/apps/webappviewer/index.html?id=8b0adb51996444d\)](https://hazards-fema.maps.arcgis.com/apps/webappviewer/index.html?id=8b0adb51996444d)





**PIN** Approximate location based on user input and does not represent an authoritative property location

**MAP PANELS**

- Selected FloodMap Boundary
- Digital Data Available
- No Digital Data Available
- Unmapped

**OTHER AREAS**

- Area of Minimal Flood Hazard Zone X
- Effective LOMRs
- Area of Undetermined Flood Hazard Zone D
- Otherwise Protected Area
- Coastal Barrier Resource System Area

**SPECIAL FLOOD HAZARD AREAS**

- Without Base Flood Elevation (BFE) Zone A, V, A99
- With BFE or Depth
- Regulatory Floodway Zone AE, AO, AH, VE, AR

**OTHER AREAS OF FLOOD HAZARD**

- 0.2% Annual Chance Flood Hazard, Areas of 1% annual chance flood with average depth less than one foot or with drainage areas of less than one square mile Zone X
- Future Conditions 1% Annual Chance Flood Hazard Zone X
- Area with Reduced Flood Risk due to Levee. See Notes, Zone X
- Area with Flood Risk due to Levee Zone D

**OTHER FEATURES**

- Cross Sections with 1% Annual Chance Water Surface Elevation
- Coastal Transect
- Base Flood Elevation Line (BFE)
- Limit of Study
- Jurisdiction Boundary
- Coastal Transect Baseline
- Profile Baseline
- Hydrographic Feature

**GENERAL STRUCTURES**

- Channel, Culvert, or Storm Sewer
- Levee, Dike, or Floodwall

Share This Page.

[Home](http://www.fema.gov/) (<http://www.fema.gov/>) [Download Plug-ins](http://www.fema.gov/download-plug-ins) (<http://www.fema.gov/download-plug-ins>) [About Us](http://www.fema.gov/about-agency) (<http://www.fema.gov/about-agency>) [Privacy Policy](http://www.fema.gov/privacy-policy) (<http://www.fema.gov/privacy-policy>) [FOIA](http://www.fema.gov/foia) (<http://www.fema.gov/foia>) [Office of the Inspector General](http://www.oig.dhs.gov/) (<http://www.oig.dhs.gov/>) [Strategic Plan](http://www.fema.gov/fema-strategic-plan) (<http://www.fema.gov/fema-strategic-plan>) [Whitehouse.gov](http://www.whitehouse.gov/) (<http://www.whitehouse.gov/>) [DHS.gov](http://www.dhs.gov/) (<http://www.dhs.gov/>) [Ready.gov](http://www.ready.gov/) (<http://www.ready.gov/>) [USA.gov](http://www.usa.gov/) (<http://www.usa.gov/>) [DisasterAssistance.gov](http://www.disasterassistance.gov/) (<http://www.disasterassistance.gov/>)

**OIG HOTLINE**  
 Report Fraud, Waste & Abuse (<https://www.oig.dhs.gov/hotline>)

Official website of the Department of Homeland Security