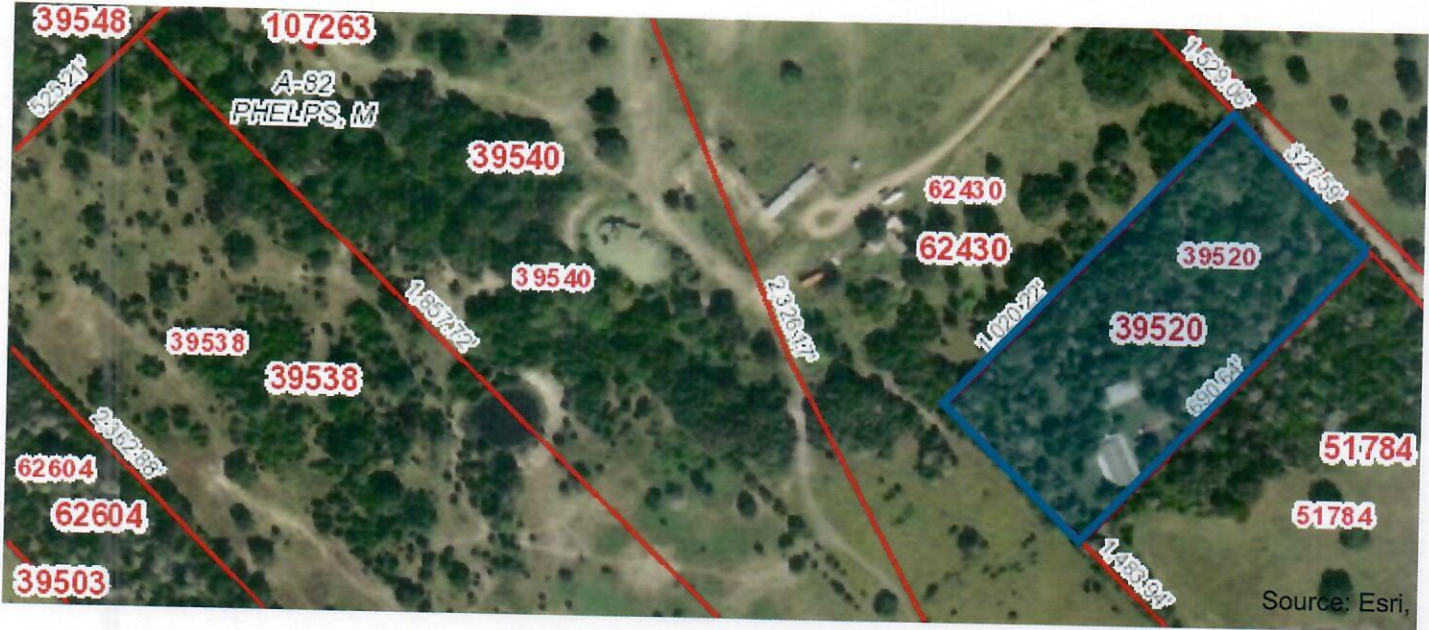


Fayette CAD Property Search

Property ID: 39520 For Year 2020

Map



## Property Details

### Account

Property ID:	39520
Legal Description:	ABS A082 PHELPS M LG,5. ACRES,MOBILE HOME, BARN,SN1 AH010112443B;SN2 AH010112443A
Geographic ID:	50-0082-0990000-020
Agent:	
Type:	Real

### Location

Address:	3207 ULLRICH RD CARMINE AREA, TX
Map ID:	12
Neighborhood CD:	

### Owner

Owner ID:	65353
Name:	CLAYTON EUGENE & SUSAN
Mailing Address:	3207 ULLRICH RD CARMINE, TX 78932-5100
% Ownership:	100.0%
Exemptions:	HS - Homestead For privacy reasons not all exemptions are shown online.



## Property Values

Improvement Homesite Value:	\$48,370
Improvement Non-Homesite Value:	\$16,830
Land Homesite Value:	\$46,750
Land Non-Homesite Value:	\$0
Agricultural Market Valuation:	\$0
Market Value:	\$111,950
Ag Use Value:	\$0
Appraised Value:	\$111,950
Homestead Cap Loss: ⓘ	\$0
Assessed Value:	\$111,950

Information provided for research purposes only. Legal descriptions and acreage amounts are for appraisal district use only and should be verified prior to using for legal purpose and or documents. Please contact the Appraisal District to verify all information for accuracy.

## Property Taxing Jurisdiction

Entity	Description	Tax Rate	Market Value	Taxable Value	Estimated Tax	Freeze Ceiling
CAD	CENTRAL APPRAISAL DISTRICT	0.000000	\$111,950	\$111,950	\$0.00	
GFA	FAYETTE COUNTY	0.303800	\$111,950	\$101,450	\$308.21	
RFM	ROAD AND BRIDGE	0.160200	\$111,950	\$101,450	\$162.52	
SRC	ROUND TOP-CARMINE ISD	1.041500	\$111,950	\$57,926	\$551.02	\$375.74
WCC	CUMMINS CREEK WCID	0.020500	\$111,950	\$111,950	\$22.95	
WFC	FAYETTE CO GWCD	0.009900	\$111,950	\$111,950	\$11.08	

**Total Tax Rate:** 1.535900 **Estimated Taxes With Exemptions:** \$1,055.79 **Estimated Taxes Without Exemptions:** \$1,719.44



## Property Improvement - Building

**Description:** Mobile Home **Type:** MOBILE HOME **State Code:** A2 **Living Area:** 2,660.00sqft **Value:** \$48,370

Type	Description	Class CD	Year Built	SQFT
MA	MAIN AREA	DMH4	0	2,660.00
CWP	COVERED WOOD PORCH	*	2004	1,779.00

**Description:** MISCELLANEOUS IMPROVEMENT **Type:** MISCELLANEOUS IMPROVEMENT **State Code:** A2 **Living Area:** 0.00sqft **Value:** \$16,830

Type	Description	Class CD	Year Built	SQFT
BRNF	BARN - FAIR QUALITY	*	2004	1,800.00

## Property Land

Type	Description	Acreage	Sqft	Eff Front	Eff Depth	Market Value	Prod. Value
HS	HOMESITE	0.5	21,780.00	0.00	0.00	\$8,500	\$0
HS	HOMESITE	4.5	196,020.00	0.00	0.00	\$38,250	\$0

## Property Roll Value History

Year	Improvements	Land Market	Ag Valuation	Appraised	HS Cap Loss	Assessed
2021	N/A	N/A	N/A	N/A	N/A	N/A
2020	\$65,200	\$46,750	\$0	\$111,950	\$0	\$111,950
2019	\$71,980	\$46,750	\$0	\$118,730	\$0	\$118,730
2018	\$71,980	\$46,750	\$0	\$118,730	\$8,023	\$110,707
2017	\$71,980	\$30,250	\$0	\$102,230	\$0	\$102,230
2016	\$71,980	\$30,250	\$0	\$102,230	\$0	\$102,230
2015	\$71,980	\$30,250	\$0	\$102,230	\$0	\$102,230
2014	\$71,980	\$30,250	\$0	\$102,230	\$0	\$102,230
2013	\$71,980	\$30,250	\$0	\$102,230	\$0	\$102,230
2012	\$71,980	\$30,250	\$0	\$102,230	\$0	\$102,230
2011	\$83,920	\$30,250	\$0	\$114,170	\$0	\$114,170

## Property Deed History

Deed Date	Type	Description	Grantor	Grantee	Volume	Page	Number
6/3/2005	W	W	MERCADO SUSAN	CLAYTON EUGENE & SUSAN	1312	396	0
	WILL	WILL	MERCADO ROBERT EST & SUSAN	MERCADO SUSAN			0
4/11/1995	W	W	LUTHERAN SEMINARY PROGRAM OF SW	MERCADO ROBERT EST & SUSAN	920	601	0
3/19/1995	SW	SW	JACOB JERRY DEAN & BARBARA	LUTHERAN SEMINARY PROGRAM OF SW	920	596	0
3/2/1992	G	G	KRAUSE HILMER C JR REV &	LUTHERAN SEMINARY PROGRAM OF SW	861	815	0



## Estimated Tax Due

### **\*\*ATTENTION\*\***

Indicated amount may not reflect delinquent tax due beyond a 5-year history. Partial payments or contract payments may not be reflected. Quarter payments that are made according to Section 31.031 of the Texas Property Tax Code are not considered delinquent.

**\*\*PRIOR TO MAKING FULL OR PARTIAL PAYMENTS PLEASE CONTACT OUR OFFICE FOR A CURRENT AMOUNT DUE\*\***

**\*\*WE CANNOT GUARANTEE THE ACCURACY OF THE AMOUNT DUE LISTED BELOW\*\***

If Paid: 3/23/2021



Year	Taxing Jurisdiction	Taxable Value	Base Tax	Base Taxes Paid	Base Tax Due	Discount/Penalty & Interest	Attorney Fees	Amount Due
2021	FAYETTE COUNTY	N/A	N/A	N/A	N/A	N/A	N/A	N/A
2021	ROAD AND BRIDGE	N/A	N/A	N/A	N/A	N/A	N/A	N/A
2021	ROUND TOP-CARMINE ISD	N/A	N/A	N/A	N/A	N/A	N/A	N/A
2021	CUMMINS CREEK WCID	N/A	N/A	N/A	N/A	N/A	N/A	N/A
2021	FAYETTE CO GWCD	N/A	N/A	N/A	N/A	N/A	N/A	N/A
	<b>2021 Total:</b>		N/A	N/A	N/A	N/A	N/A	N/A
2020	FAYETTE COUNTY	\$101,450	\$308.21	\$308.21	\$0.00	\$0.00	\$0.00	\$0.00
2020	ROAD AND BRIDGE	\$101,450	\$162.52	\$162.52	\$0.00	\$0.00	\$0.00	\$0.00
2020	ROUND TOP-CARMINE ISD	\$57,926	\$551.03	\$551.03	\$0.00	\$0.00	\$0.00	\$0.00
2020	CUMMINS CREEK WCID	\$111,950	\$22.95	\$22.95	\$0.00	\$0.00	\$0.00	\$0.00
2020	FAYETTE CO GWCD	\$111,950	\$11.08	\$11.08	\$0.00	\$0.00	\$0.00	\$0.00



	2020 Total:		\$1,055.79	\$1,055.79	\$0.00	\$0.00	\$0.00	\$0.00
2019	FAYETTE COUNTY	\$108,230	\$328.91	\$328.91	\$0.00	\$0.00	\$0.00	\$0.00
2019	ROAD AND BRIDGE	\$108,230	\$173.28	\$173.28	\$0.00	\$0.00	\$0.00	\$0.00
2019	ROUND TOP-CARMINE ISD	\$63,476	\$560.48	\$560.48	\$0.00	\$0.00	\$0.00	\$0.00
2019	CUMMINS CREEK WCID	\$118,730	\$24.34	\$24.34	\$0.00	\$0.00	\$0.00	\$0.00
2019	FAYETTE CO GWCD	\$118,730	\$14.13	\$14.13	\$0.00	\$0.00	\$0.00	\$0.00
	2019 Total:		\$1,101.14	\$1,101.14	\$0.00	\$0.00	\$0.00	\$0.00
2018	FAYETTE COUNTY	\$100,207	\$289.50	\$289.50	\$0.00	\$0.00	\$0.00	\$0.00
2018	ROAD AND BRIDGE	\$100,207	\$155.42	\$155.42	\$0.00	\$0.00	\$0.00	\$0.00
2018	ROUND TOP-CARMINE ISD	\$55,453	\$573.04	\$573.04	\$0.00	\$0.00	\$0.00	\$0.00
2018	CUMMINS CREEK WCID	\$110,707	\$22.69	\$22.69	\$0.00	\$0.00	\$0.00	\$0.00
2018	FAYETTE CO GWCD	\$110,707	\$11.62	\$11.62	\$0.00	\$0.00	\$0.00	\$0.00
	2018 Total:		\$1,052.27	\$1,052.27	\$0.00	\$0.00	\$0.00	\$0.00
2017	FAYETTE COUNTY	\$91,730	\$267.20	\$267.20	\$0.00	\$0.00	\$0.00	\$0.00
2017	ROAD AND BRIDGE	\$91,730	\$142.27	\$142.27	\$0.00	\$0.00	\$0.00	\$0.00
2017	ROUND TOP-CARMINE ISD	\$50,276	\$575.66	\$575.66	\$0.00	\$0.00	\$0.00	\$0.00
2017	CUMMINS CREEK WCID	\$102,230	\$21.57	\$21.57	\$0.00	\$0.00	\$0.00	\$0.00
2017	FAYETTE CO GWCD	\$102,230	\$13.29	\$13.29	\$0.00	\$0.00	\$0.00	\$0.00
	2017 Total:		\$1,019.99	\$1,019.99	\$0.00	\$0.00	\$0.00	\$0.00
2016	FAYETTE COUNTY	\$102,230	\$299.54	\$299.54	\$0.00	\$0.00	\$0.00	\$0.00



2016	ROAD AND BRIDGE	\$99,230	\$154.70	\$154.70	\$0.00	\$0.00	\$0.00	\$0.00
2016	ROUND TOP-CARMINE ISD	\$50,276	\$575.66	\$575.66	\$0.00	\$0.00	\$0.00	\$0.00
2016	CUMMINS CREEK WCID	\$102,230	\$21.57	\$21.57	\$0.00	\$0.00	\$0.00	\$0.00
2016	FAYETTE CO GWCD	\$102,230	\$14.31	\$14.31	\$0.00	\$0.00	\$0.00	\$0.00
	2016 Total:		\$1,065.78	\$1,065.78	\$0.00	\$0.00	\$0.00	\$0.00
2015	FAYETTE COUNTY	\$102,230	\$273.88	\$273.88	\$0.00	\$0.00	\$0.00	\$0.00
2015	ROAD AND BRIDGE	\$99,230	\$151.13	\$151.13	\$0.00	\$0.00	\$0.00	\$0.00
2015	ROUND TOP-CARMINE ISD	\$50,276	\$575.66	\$575.66	\$0.00	\$0.00	\$0.00	\$0.00
2015	CUMMINS CREEK WCID	\$102,230	\$21.57	\$21.57	\$0.00	\$0.00	\$0.00	\$0.00
2015	FAYETTE CO GWCD	\$102,230	\$15.33	\$15.33	\$0.00	\$0.00	\$0.00	\$0.00
	2015 Total:		\$1,037.57	\$1,037.57	\$0.00	\$0.00	\$0.00	\$0.00
2014	FAYETTE COUNTY	\$102,230	\$273.26	\$273.26	\$0.00	\$0.00	\$0.00	\$0.00
2014	ROAD AND BRIDGE	\$99,230	\$150.83	\$150.83	\$0.00	\$0.00	\$0.00	\$0.00
2014	ROUND TOP-CARMINE ISD	\$60,276	\$690.16	\$690.16	\$0.00	\$0.00	\$0.00	\$0.00
2014	CUMMINS CREEK WCID	\$102,230	\$21.57	\$21.57	\$0.00	\$0.00	\$0.00	\$0.00
2014	FAYETTE CO GWCD	\$102,230	\$15.85	\$15.85	\$0.00	\$0.00	\$0.00	\$0.00
	2014 Total:		\$1,151.67	\$1,151.67	\$0.00	\$0.00	\$0.00	\$0.00
2013	FAYETTE COUNTY	\$102,230	\$273.26	\$273.26	\$0.00	\$0.00	\$0.00	\$0.00
2013	ROAD AND BRIDGE	\$99,230	\$150.83	\$150.83	\$0.00	\$0.00	\$0.00	\$0.00
2013	ROUND TOP-CARMINE ISD	\$60,276	\$690.16	\$690.16	\$0.00	\$0.00	\$0.00	\$0.00



2013	CUMMINS CREEK WCID	\$102,230	\$21.57	\$21.57	\$0.00	\$0.00	\$0.00	\$0.00
2013	FAYETTE CO GWCD	\$102,230	\$16.36	\$16.36	\$0.00	\$0.00	\$0.00	\$0.00
	2013 Total:		\$1,152.18	\$1,152.18	\$0.00	\$0.00	\$0.00	\$0.00
2012	FAYETTE COUNTY	\$102,230	\$293.71	\$293.71	\$0.00	\$0.00	\$0.00	\$0.00
2012	ROAD AND BRIDGE	\$99,230	\$130.98	\$130.98	\$0.00	\$0.00	\$0.00	\$0.00
2012	ROUND TOP-CARMINE ISD	\$60,276	\$690.16	\$690.16	\$0.00	\$0.00	\$0.00	\$0.00
2012	CUMMINS CREEK WCID	\$102,230	\$21.37	\$21.37	\$0.00	\$0.00	\$0.00	\$0.00
2012	FAYETTE CO GWCD	\$102,230	\$10.22	\$10.22	\$0.00	\$0.00	\$0.00	\$0.00
	2012 Total:		\$1,146.44	\$1,146.44	\$0.00	\$0.00	\$0.00	\$0.00
2011	FAYETTE COUNTY	\$114,170	\$317.05	\$317.05	\$0.00	\$0.00	\$0.00	\$0.00
2011	ROAD AND BRIDGE	\$111,170	\$146.74	\$146.74	\$0.00	\$0.00	\$0.00	\$0.00
2011	ROUND TOP-CARMINE ISD	\$69,900	\$793.38	\$793.38	\$0.00	\$0.00	\$0.00	\$0.00
2011	CUMMINS CREEK WCID	\$114,170	\$23.86	\$23.86	\$0.00	\$0.00	\$0.00	\$0.00
2011	FAYETTE CO GWCD	\$114,170	\$11.42	\$11.42	\$0.00	\$0.00	\$0.00	\$0.00
	2011 Total:		\$1,292.45	\$1,292.45	\$0.00	\$0.00	\$0.00	\$0.00

## DISCLAIMER

Information provided for research purposes only. Legal descriptions and acreage amounts are for appraisal district use only and should be verified prior to using for legal purpose and or documents. Please contact the Appraisal District to verify all information for accuracy.