

FEMA Flood Map Service Center: Search By Address

Navigation

Search

Languages

[MSC Home \(/portal/\)](#)

[MSC Search by Address \(/portal/search\)](#)

[MSC Search All Products \(/portal/advanceSearch\)](#)

▼ [MSC Products and Tools \(/portal/resources/productsandtools\)](#)

[Hazus \(/portal/resources/hazus\)](#)

[LOMC Batch Files \(/portal/resources/lomc\)](#)

[Product Availability \(/portal/productAvailability\)](#)

[MSC Frequently Asked Questions \(FAQs\) \(/portal/resources/faq\)](#)

[MSC Email Subscriptions \(/portal/subscriptionHome\)](#)

[Contact MSC Help \(/portal/resources/contact\)](#)

Enter an address, place, or coordinates: ?

285 E Thigpen Carmine, TX 78932

Search

Whether you are in a high risk zone or not, you may need [flood insurance \(https://www.fema.gov/national-flood-insurance-program\)](https://www.fema.gov/national-flood-insurance-program) because most homeowners insurance doesn't cover flood damage. If you live in an area with low or moderate flood risk, you are 5 times more likely to experience flood than a fire in your home over the next 30 years. For many, a National Flood Insurance Program's flood insurance policy could cost less than \$400 per year. Call your insurance agent today and protect what you've built.

Learn more about [steps you can take \(https://www.fema.gov/what-mitigation\)](https://www.fema.gov/what-mitigation) to reduce flood risk damage.

Search Results—Products for **CARMINE, CITY OF**

Show ALL Products » (<https://msc.fema.gov/portal/availabilitySearch?addcommunity=481505&communityName=CARMINE, CITY>)

The flood map for the selected area is number **48149C0050C**, effective on **10/17/2006** ?

DYNAMIC MAP



PRINT MAP/
FIRMette

MAP IMAGE



DOWNLOAD
FIRM PANEL

(<https://msc.fema.gov/portal/downloadProduct?>

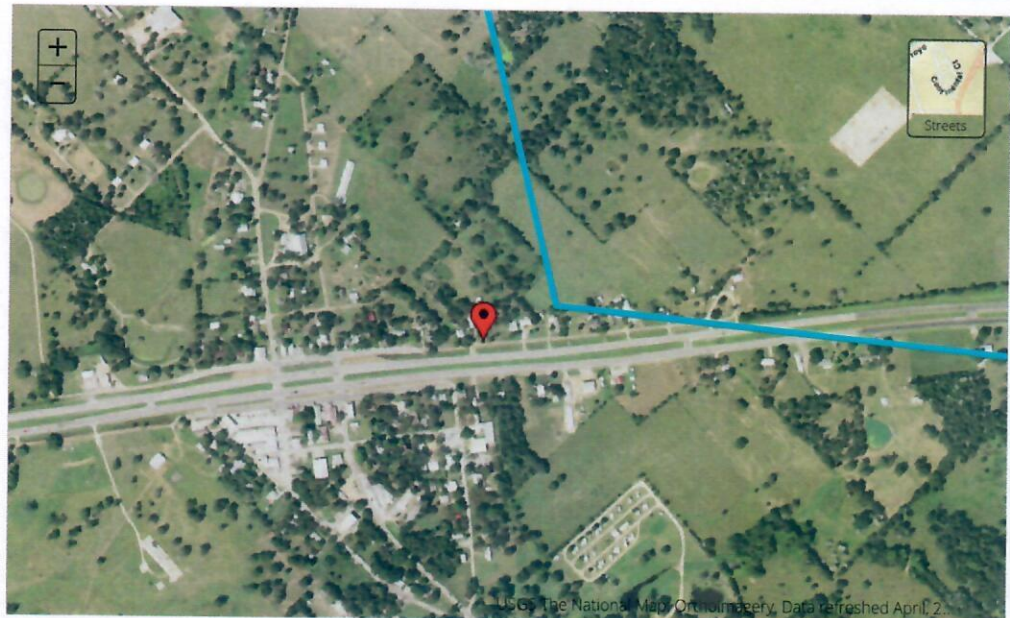
[filepath=/48/P/Firm/48149C0050C.tif&productTypeID=FINAL_PRODUCT&productSubTypeID=FIRM_PANEL&productID](https://msc.fema.gov/portal/downloadProduct?filepath=/48/P/Firm/48149C0050C.tif&productTypeID=FINAL_PRODUCT&productSubTypeID=FIRM_PANEL&productID)

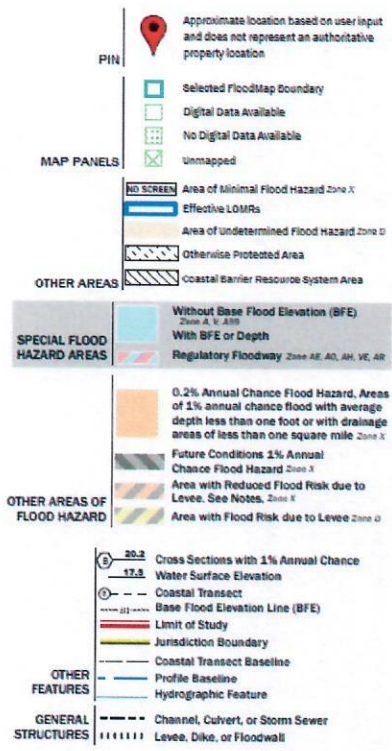
Changes to this FIRM ?

- Revisions (0)
- Amendments (0)
- Revalidations (0)

You can choose a new flood map or move the location pin by selecting a different location on the locator map below or by entering a new location in the search field above. It may take a minute or more during peak hours to generate a dynamic FIRMette. If you are a person with a disability, are blind, or have low vision, and need assistance, please contact a map specialist (<https://msc.fema.gov/portal/resources/contact>).

[Go To NFHL Viewer » \(https://hazards-fema.maps.arcgis.com/apps/webappviewer/index.html?id=8b0adb51996444d4879338b\)](https://hazards-fema.maps.arcgis.com/apps/webappviewer/index.html?id=8b0adb51996444d4879338b)





Share This Page.

[Home](http://www.fema.gov/)
[Download Plug-ins](http://www.fema.gov/download-plugin-ins)
[About Us](http://www.fema.gov/about-us)
[Privacy Policy](http://www.fema.gov/privacy-policy)
[FOIA](http://www.fema.gov/foia)
[Office of the Inspector General](http://www.oig.dhs.gov/)
[Strategic Plan](http://www.fema.gov/fema-strategic-plan)
[Whitehouse.gov](http://www.whitehouse.gov/)
[DHS.gov](http://www.dhs.gov/)
[Ready.gov](http://www.ready.gov/)
[USA.gov](http://www.usa.gov/)
[DisasterAssistance.gov](http://www.disasterassistance.gov/)

OIG HOTLINE
 Report Fraud, Waste & Abuse
<https://www.oig.dhs.gov/hotline>

Official website of the Department of Homeland Security