



# FEMA Flood Map Service Center: Search By Address

Navigation

Search

Languages

MSC Home (/portal/)

MSC Search by Address (/portal/search)

MSC Search All Products (/portal/advanceSearch)

MSC Products and Tools (/portal/resources/productsandtools)

Hazus (/portal/resources/hazus)

LOMC Batch Files (/portal/resources/lomc)

Product Availability (/portal/productAvailability)

MSC Frequently Asked Questions (FAQs) (/portal/resources/faq)

MSC Email Subscriptions (/portal/subscriptionHome)

Contact MSC Help (/portal/resources/contact)

Enter an address, place, or coordinates: ?

990 Wiesepape Rd Brenham Tx 77833

Search

Whether you are in a high risk zone or not, you may need [flood insurance](https://www.fema.gov/national-flood-insurance-program) because most homeowners insurance doesn't cover flood damage. If you live in an area with low or moderate flood risk, you are 5 times more likely to experience flood than a fire in your home over the next 30 years. For many, a National Flood Insurance Program's flood insurance policy could cost less than \$400 per year. Call your insurance agent today and protect what you've built.

Learn more about [steps you can take](https://www.fema.gov/what-mitigation) to reduce flood risk damage.

## Search Results—Products for WASHINGTON COUNTY UNINCORPORATED AREAS

Show ALL Products » (<https://msc.fema.gov/portal/availabilitySearch?addcommunity=481188&communityName=WASI>)

The flood map for the selected area is number **48477C0325D**, effective on **05/16/2019** ?

DYNAMIC MAP



MAP IMAGE



(<https://msc.fema.gov/portal/downloadProduct?>

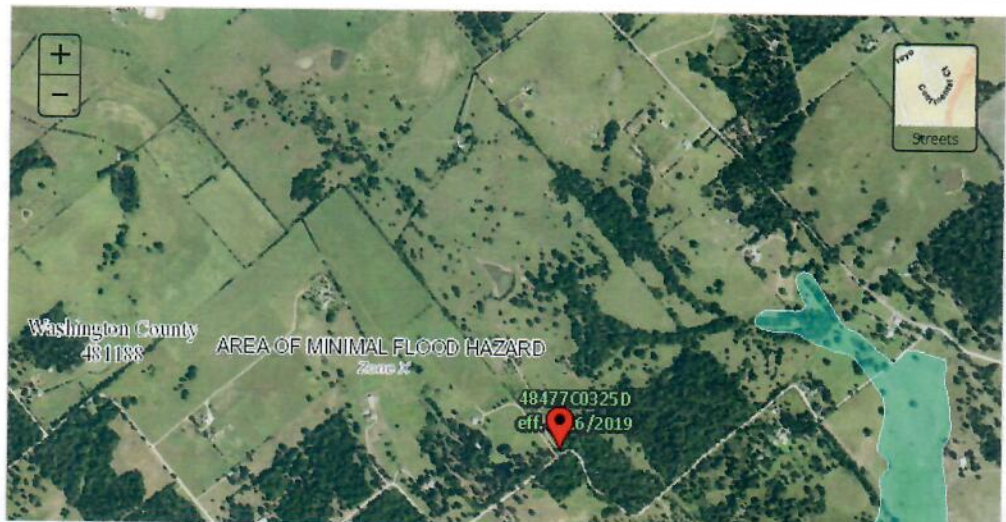
[filepath=/48/P/Firm/48477C0325D.png&productTypeID=FINAL\\_PRODUCT&productSubTypeID=FIRM\\_PANEL](#)

Changes to this FIRM ?

- Revisions (0)
- Amendments (0)
- Revalidations (0)

You can choose a new flood map or move the location pin by selecting a different location on the locator map below or by entering a new location in the search field above. It may take a minute or more during peak hours to generate a dynamic FIRMette. If you are a person with a disability, are blind, or have low vision, and need assistance, please contact a map specialist (<https://msc.fema.gov/portal/resources/contact>).

Go To NFHL Viewer » (<https://hazards-fema.maps.arcgis.com/apps/webappviewer/index.html?id=8b0adb51996444d>)





USGS The National Map: Orthoimagery\_Data refreshed Apr

**PIN** Approximate location based on user input and does not represent an authoritative property location

**MAP PANELS**

- Selected FloodMap Boundary
- Digital Data Available
- No Digital Data Available
- Unmapped

**OTHER AREAS**

- Area of Minimal Flood Hazard Zone X
- Effective LOMRs
- Area of Undetermined Flood Hazard Zone D
- Otherwise Protected Area
- Coastal Barrier Resource System Area

**SPECIAL FLOOD HAZARD AREAS**

- Without Base Flood Elevation (BFE) Zone A, V, AE
- With BFE or Depth
- Regulatory Floodway Zone AE, AO, AH, VE, AR

**OTHER AREAS OF FLOOD HAZARD**

- 0.2% Annual Chance Flood Hazard, Areas of 1% annual chance flood with average depth less than one foot or with drainage areas of less than one square mile Zone X
- Future Conditions 1% Annual Chance Flood Hazard Zone X
- Area with Reduced Flood Risk due to Levee. See Notes, Zone X
- Area with Flood Risk due to Levee Zone D

**OTHER FEATURES**

- Cross Sections with 1% Annual Chance Water Surface Elevation
- Coastal Transect
- Base Flood Elevation Line (BFE)
- Limit of Study
- Jurisdiction Boundary
- Coastal Transect Baseline
- Profile Baseline
- Hydrographic Feature

**GENERAL STRUCTURES**

- Channel, Culvert, or Storm Sewer
- Levee, Dike, or Floodwall

Share This Page.

[Home](http://www.fema.gov/) ([//www.fema.gov/](http://www.fema.gov/))
 [Download Plug-ins](http://www.fema.gov/download-plug-ins) ([//www.fema.gov/download-plug-ins](http://www.fema.gov/download-plug-ins))
 [About Us](http://www.fema.gov/about-agency) ([//www.fema.gov/about-agency](http://www.fema.gov/about-agency))
 [Privacy Policy](http://www.fema.gov/privacy-policy) ([//www.fema.gov/privacy-policy](http://www.fema.gov/privacy-policy))
 [FOIA](http://www.fema.gov/foia) ([//www.fema.gov/foia](http://www.fema.gov/foia))
 [Office of the Inspector General](http://www.oig.dhs.gov/) ([//www.oig.dhs.gov/](http://www.oig.dhs.gov//www.oig.dhs.gov/))
 [Strategic Plan](http://www.fema.gov/fema-strategic-plan) ([//www.fema.gov/fema-strategic-plan](http://www.fema.gov/fema-strategic-plan))
 [Whitehouse.gov](http://www.whitehouse.gov/) ([//www.whitehouse.gov](http://www.whitehouse.gov//www.whitehouse.gov/))
 [DHS.gov](http://www.dhs.gov/) ([//www.dhs.gov](http://www.dhs.gov//www.dhs.gov/))
 [Ready.gov](http://www.ready.gov/) ([//www.ready.gov](http://www.ready.gov//www.ready.gov/))
 [USA.gov](http://www.usa.gov/) ([//www.usa.gov](http://www.usa.gov//www.usa.gov/))
 [DisasterAssistance.gov](http://www.disasterassistance.gov/) ([//www.disasterassistance.gov/](http://www.disasterassistance.gov//www.disasterassistance.gov/))

**OIG HOTLINE**  
 Report Fraud, Waste & Abuse  
<https://www.oig.dhs.gov/hotline>

Official website of the Department of Homeland Security