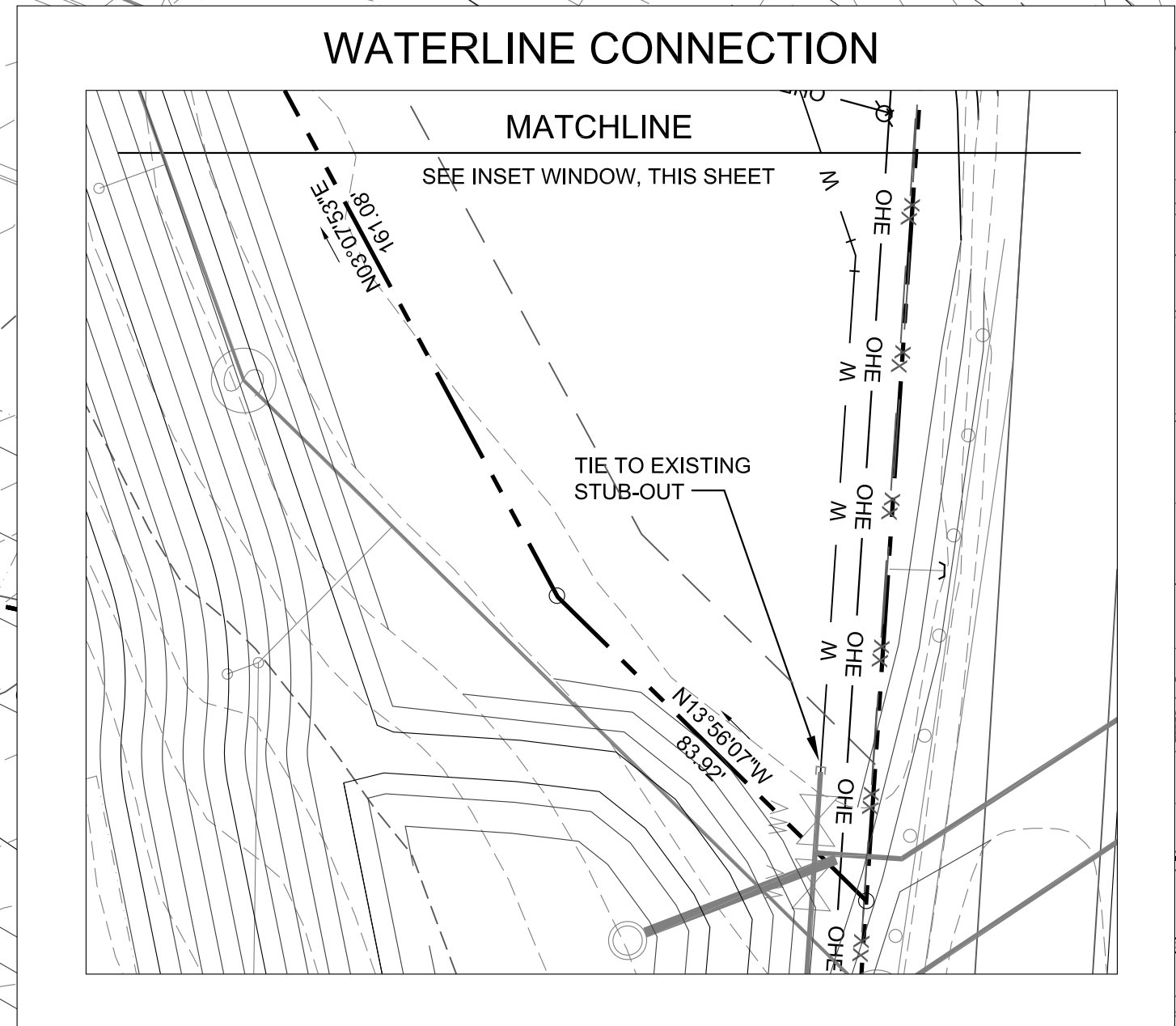
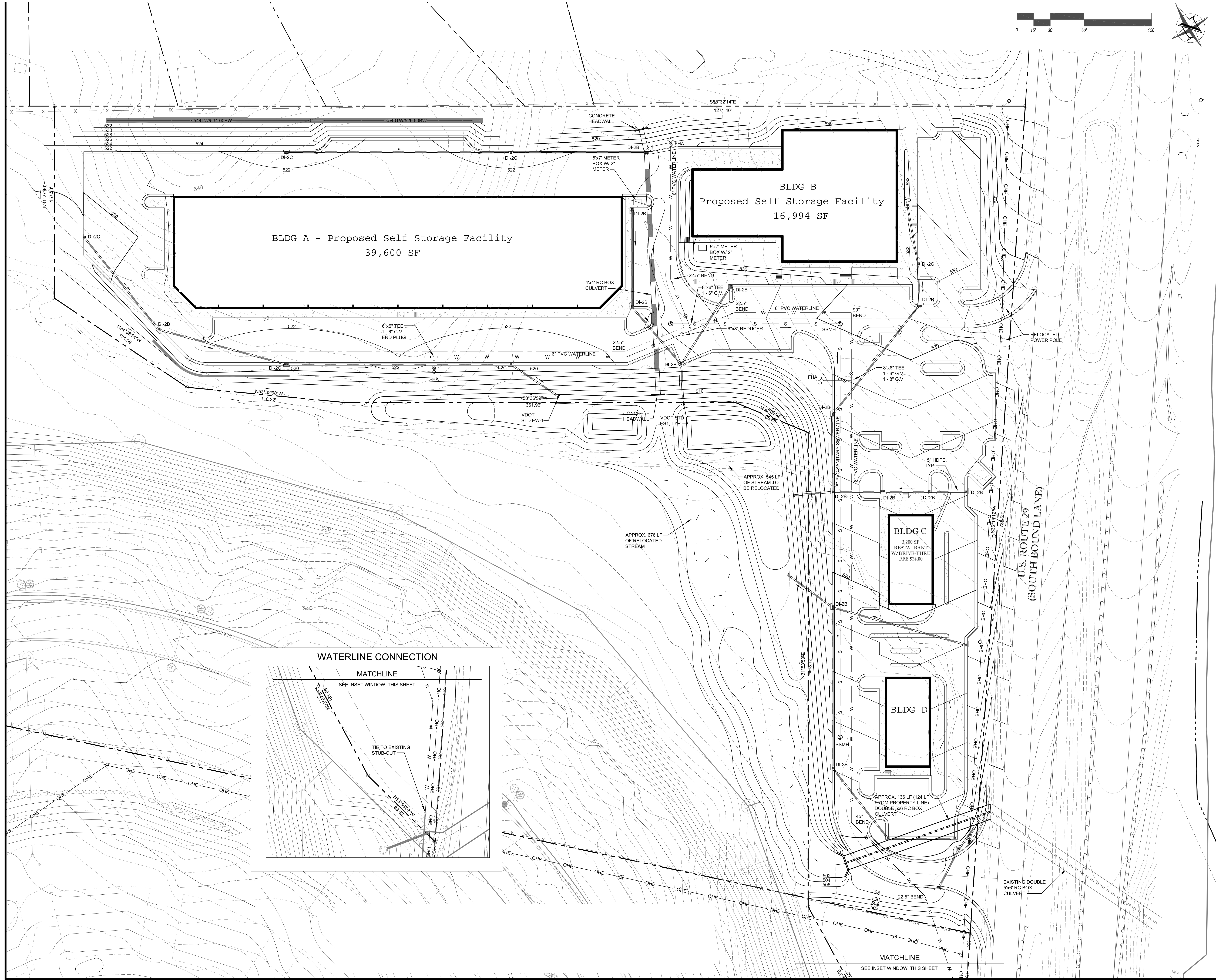
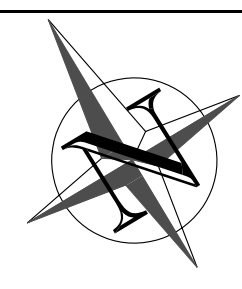
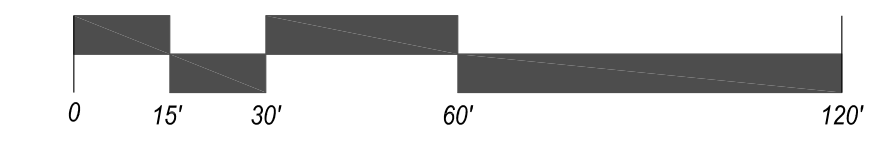


PRELIMINARY PLAN FOR
HOLLY HILL SQUARE
GREENE COUNTY, VIRGINIA
GRADING & UTILITY PLAN



SCALE: 1" = 30'
ISSUED: 2-2-07
DRAWN BY: MOS
REVISIONS:

All rights reserved. No part of the material protected by this copyright (plans, ideas, designs, sections or details) reproduced on these plans may be reproduced, changed or utilized in any form or by any means, electronic or mechanical, including photocopying, scanning, or by any other means of retrieval system without written permission from Terra Concepts, P.C.
Also, these plans may not be assigned to a third party without first written authorization of Terra Concepts, P.C.
© TERRA CONCEPTS, P.C.