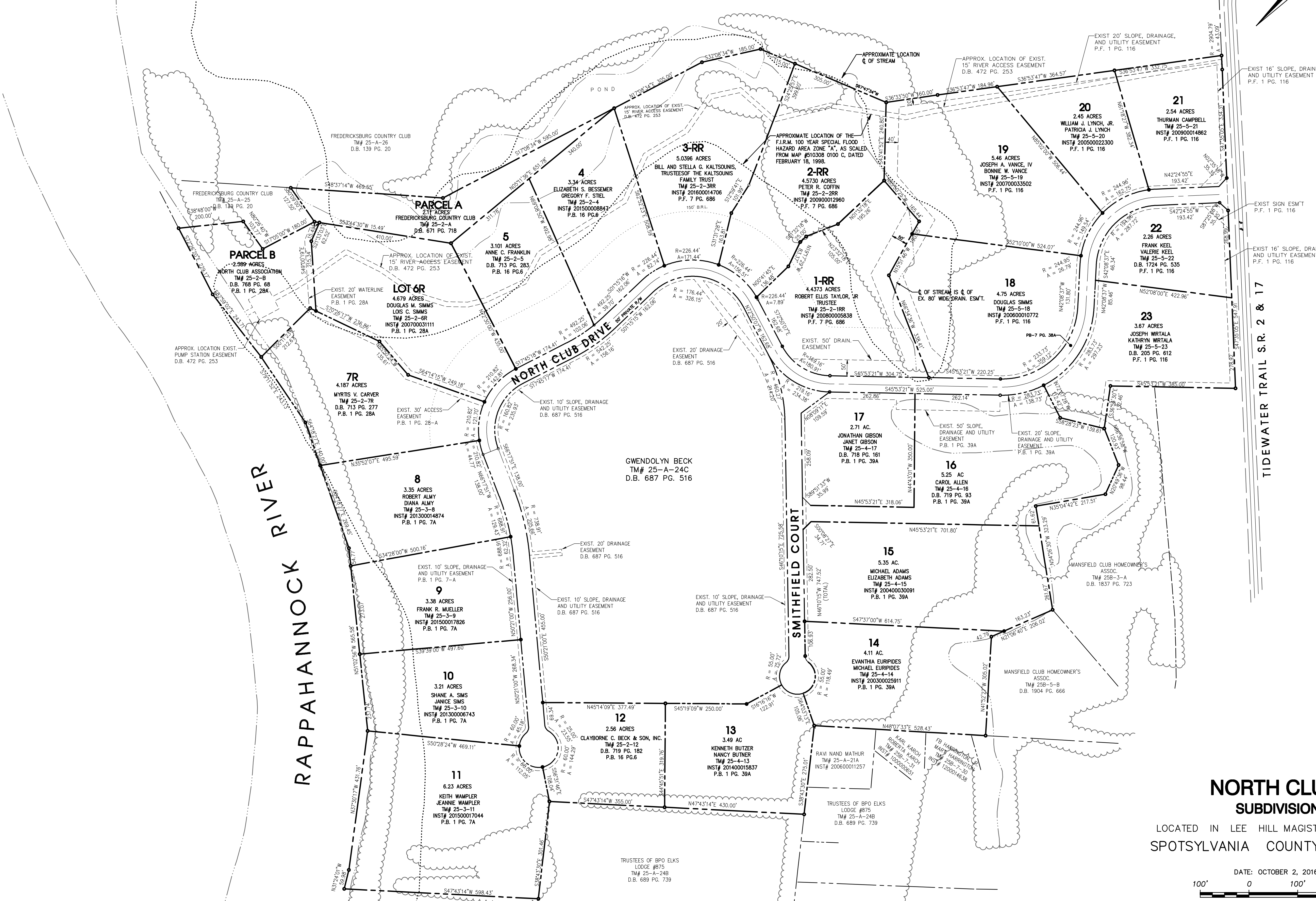


FREDERICKSBURG COUNTRY CLUB



RAPPAHANNOCK RIVER

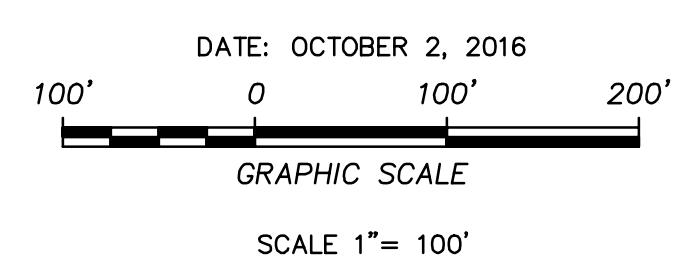
NORTH CLUB DRIVE

SMITHFIELD COURT

TIDEWATER TRAIL S.R. 2 & 17

NORTH CLUB SUBDIVISION

LOCATED IN LEE HILL MAGISTERIAL DISTRICT SPOTSYLVANIA COUNTY, VIRGINIA



SULLIVAN, DONAHOE AND INGALLS ENGINEERS, LAND PLANNERS & SURVEYORS P.O. BOX 614 FREDERICKSBURG, VIRGINIA 22404 PHONE 540-898-5878 FAX 540-898-3390

- NOTES :
1. NO TITLE REPORT FURNISHED.
 2. THIS PLAT IS SUBJECT TO ANY EASEMENTS AND RESTRICTIONS OF RECORD.
 3. BOUNDARY INFORMATION TAKEN FROM PLATS BY SULLIVAN, DONAHOE AND INGALLS.

DATE	REVISIONS

ENGINEERS, LAND PLANNERS & SURVEYORS
 P. O. BOX 614
 10720 COLUMBIA DRIVE
 FREDERICKSBURG, VIRGINIA 22404
 TELEPHONE 540-898-5878

SULLIVAN DONAHOE & INGALLS

COMPOSITE PLAT
 LEE HILL MAGISTERIAL DISTRICT
 SPOTSYLVANIA COUNTY,
 NORTH CLUB

DES./DRFT: SDI
 CHECKED: EVS
 APPROVED: EVS
 JOB NO. 16-SP-0476
 DATE 10/02/2016
 SCALE 1" = 100'

SHEET 1
 OF 1 SHEETS

P:\Active Jobs\North Club Composite Plat 16-SP-0476\Composite Plat\North Club Composite Plat.plt
 JN:\project info - SDI HOUSE LOCATION PROJECT
 Last Plotted: Wed Apr 12 14:05:19 2017