

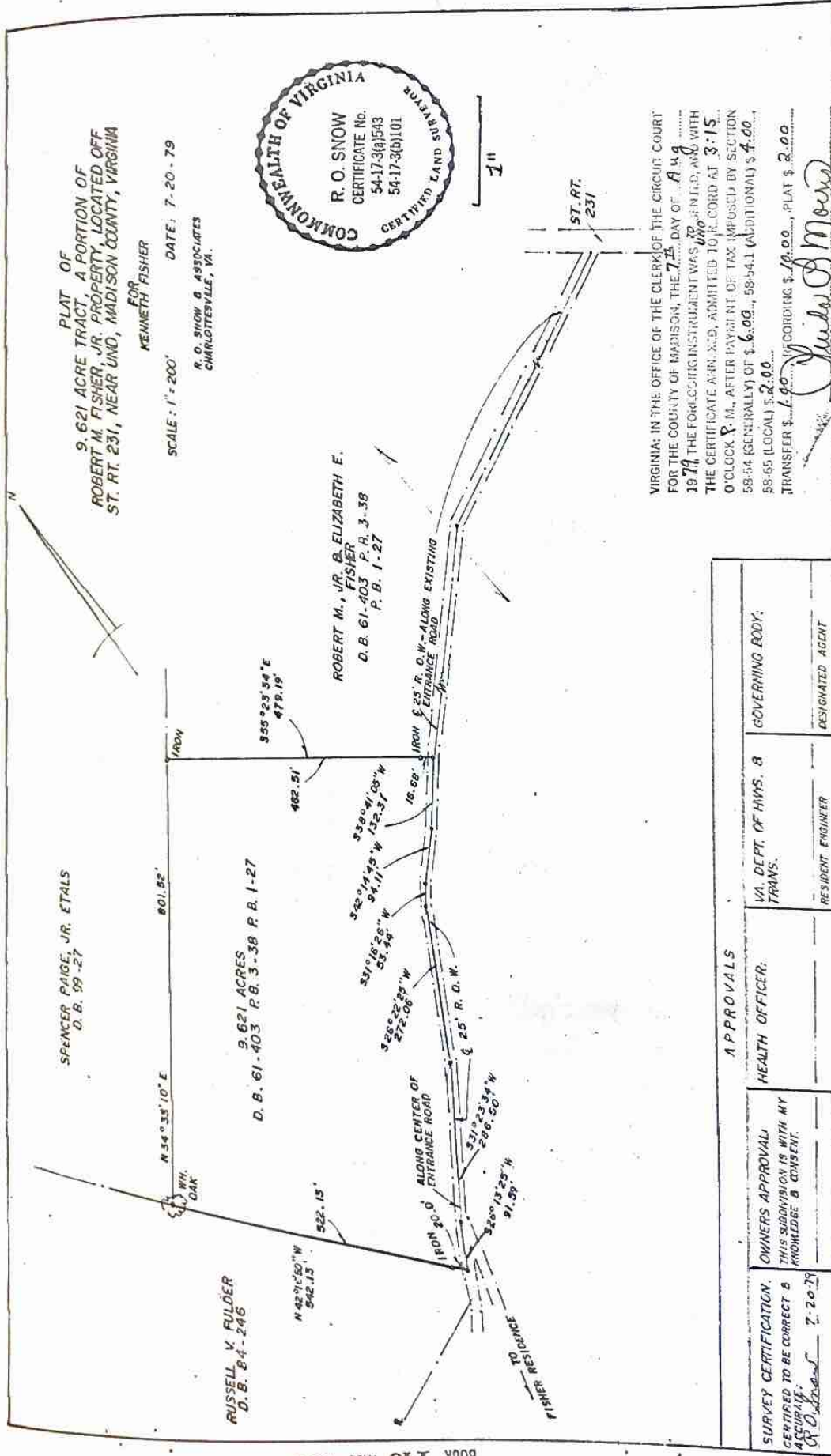
N 44° 50' 00" E
94.14'
N 33° 32' 40" E
53.46'
N 28° 38' 39" E
272.15'

N 33° 39' 48" E
286.60'
N 28° 29' 39" E
91.62'

16' W
(TOT)
ALONG E CREEK RD

EXISTING 25' WIDE
RIGHT OF WAY
D.B. 212-10
D.B. 149-454 (PLAT)

(TOTAL)



PLAT OF
9.621 ACRE TRACT, A PORTION OF
ROBERT M. FISHER, JR. PROPERTY, LOCATED OFF
ST. RT. 231, NEAR UNO, MADISON COUNTY, VIRGINIA
FOR
KENNETH FISHER

SCALE: 1" = 200'
DATE: 7-20-79
R. O. SNOW & ASSOCIATES
CHARLOTTESVILLE, VA.



1" = 200'

ST. RT. 231

VIRGINIA: IN THE OFFICE OF THE CLERK OF THE CIRCUIT COURT FOR THE COUNTY OF MADISON, THE 7th DAY OF AUGUST 1979 THE FOREGOING INSTRUMENT WAS PRESENTED AND WITH THE CERTIFICATE ANNEXED, ADMITTED TO RECORD AT 3:15 O'CLOCK P.M., AFTER PAYMENT OF TAX IMPOSED BY SECTION 58-54 (GENUINELY) OF \$ 6.00, 58-54.1 (ADDITIONAL) \$ 4.00, 58-65 (LOCAL) \$ 2.00. RECORDING \$ 10.00, PLAT \$ 2.00. TRANSFER \$ 1.00.

Julia D. Moore
CLERK - DEPUTY CLERK

3771

APPROVALS	
<p>SURVEY CERTIFICATION: CERTIFIED TO BE CORRECT & ACCURATE: <i>A. D. [Signature]</i> 7-20-79</p>	<p>OWNERS APPROVAL: THIS SUBDIVISION IS WITH MY KNOWLEDGE & CONSENT.</p>
<p>HEALTH OFFICER:</p>	<p>VA DEPT. OF HHS, B TRANS.</p>
<p>GOVERNING BODY:</p>	<p>RESIDENT ENGINEER</p>
<p>DESIGNATED AGENT:</p>	<p>RESIDENT ENGINEER</p>

ALONG CENTERLINE ROUTE 231

T.M. 64-70
COXSON & EVANS
W.B. 37-30

T.M. 64-69
COXSON
D.B. 176-98

T.M. 64-68
ARTALE & LOHR, INC.
IN#050000605

SEE BOUNDARY ADJUSTMENT
PLATTED BY THIS OFFICE
DATED 04/13/2007

T.M. 64-73A
FISHER ET ALS
D.B. 212-10

**T.M. 64-73B
FISHER ET ALS
IN#070000287**

AT "G"
T.M. 63-54
HILL & NEALE
IN#030003654

T.M. 64-73
D.B. 207-897
D.B. 79-340
P.B. 3-38
178 (+/-) AC. BY
COUNTY RECORDS

T.M. 69-1
D.B. 207-897

T.M. 64-71
T.M. 64-72
D.B. 207-897
P.B. 1-27
D.B. 36-482
40 AC.
BY COUNTY
RECORDS

T.M. 64-71
JOYCE
IN#04000

T.M. 64-
JOYCE
IN#0401

T.M. 64-74
FRY
W.B. 40-489

T.M. 64-82
PAGE
D.B. 131-36

SETSTONE FOUND
I.P.F. AT 263.56'

