

E 607

W. P. NICHOLSON, et ux
D.B. 86 - 58

LANKENBAKER
41

W. P. NICHOLSON, et ux
D.B. 86 - 58

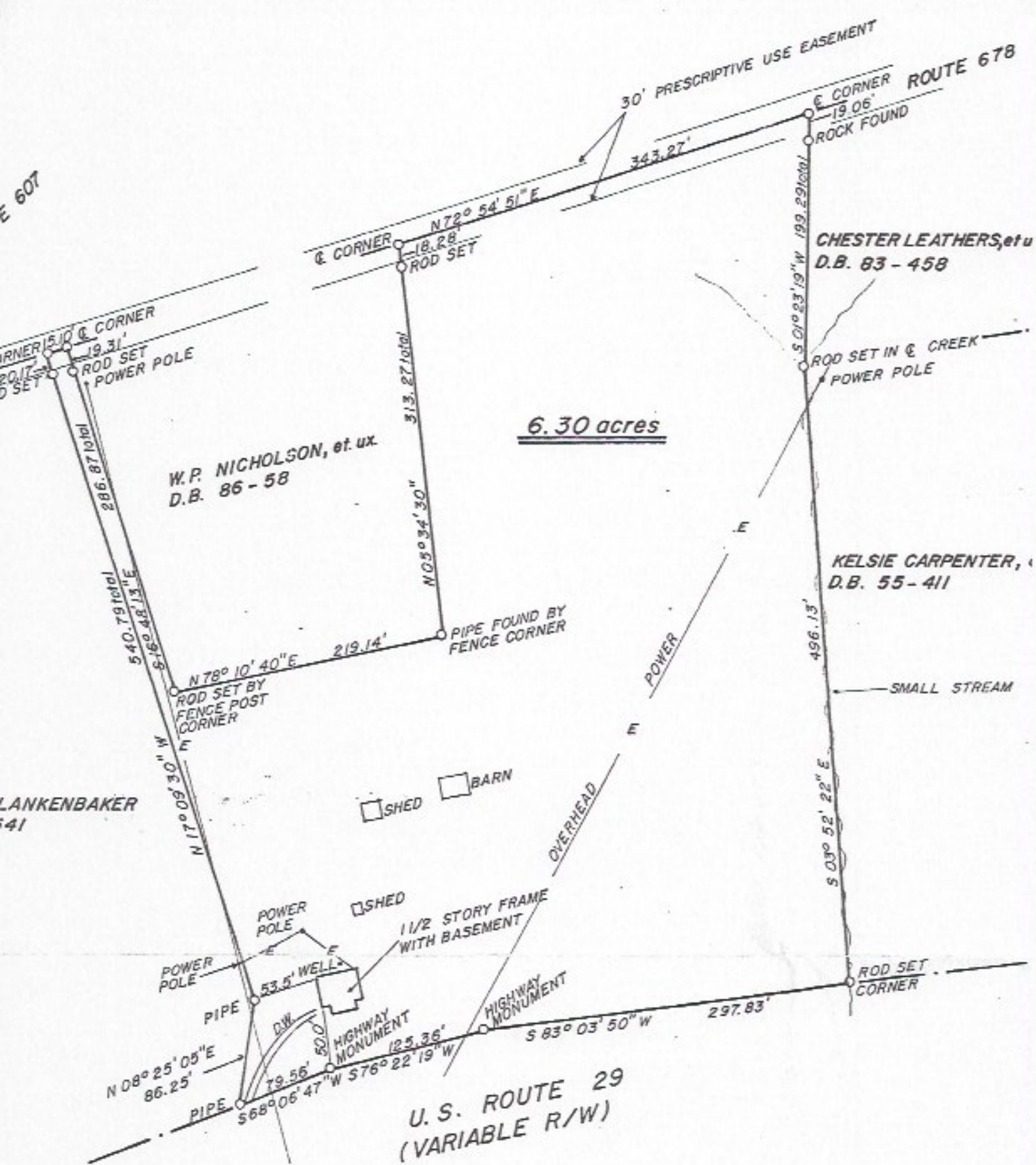
6.30 acres

30' PRESCRIPTIVE USE EASEMENT

CHESTER LEATHERS, et u
D.B. 83 - 458

KELSIE CARPENTER,
D.B. 55 - 411

U. S. ROUTE 29
(VARIABLE R/W)



Virginia Clerk's Office, Circuit Court of Madison County
 Date: \$ 93.75 The 23rd day of June, 1986
 Local: 31.25
 Transfer: 1.00
 This document was prepared and