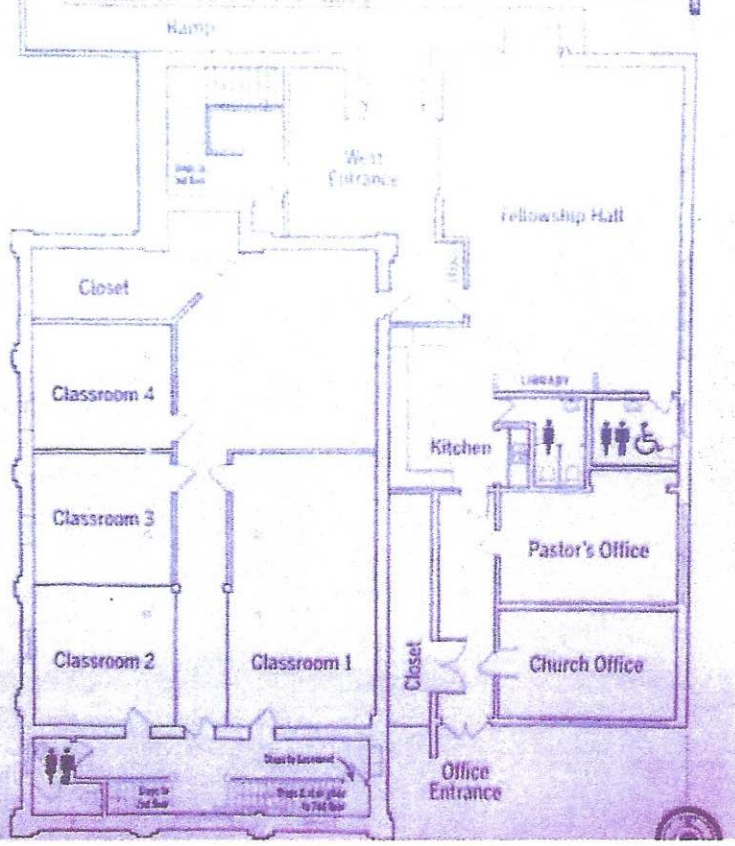
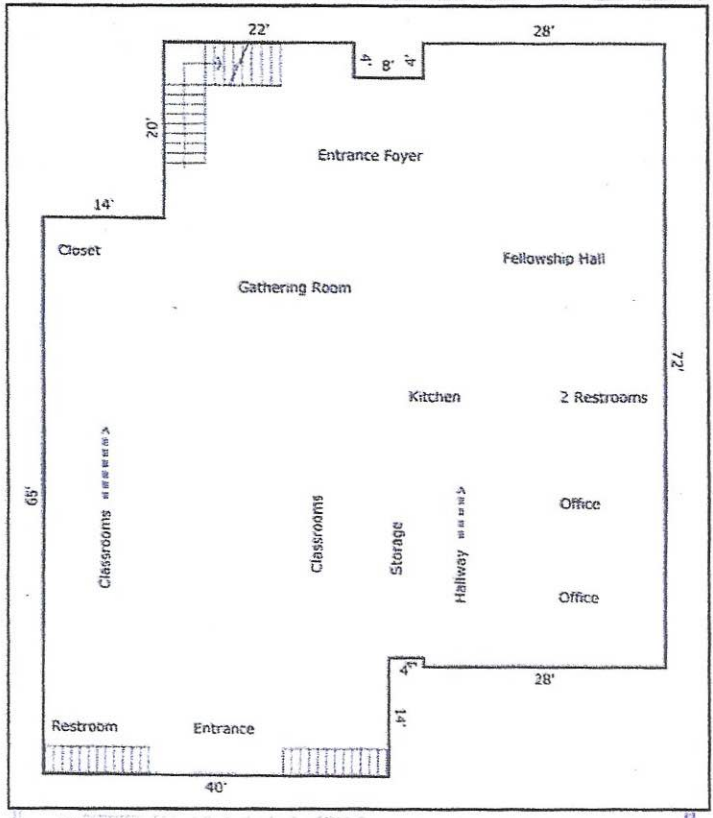


SITE & SITE IMPROVEMENTS:

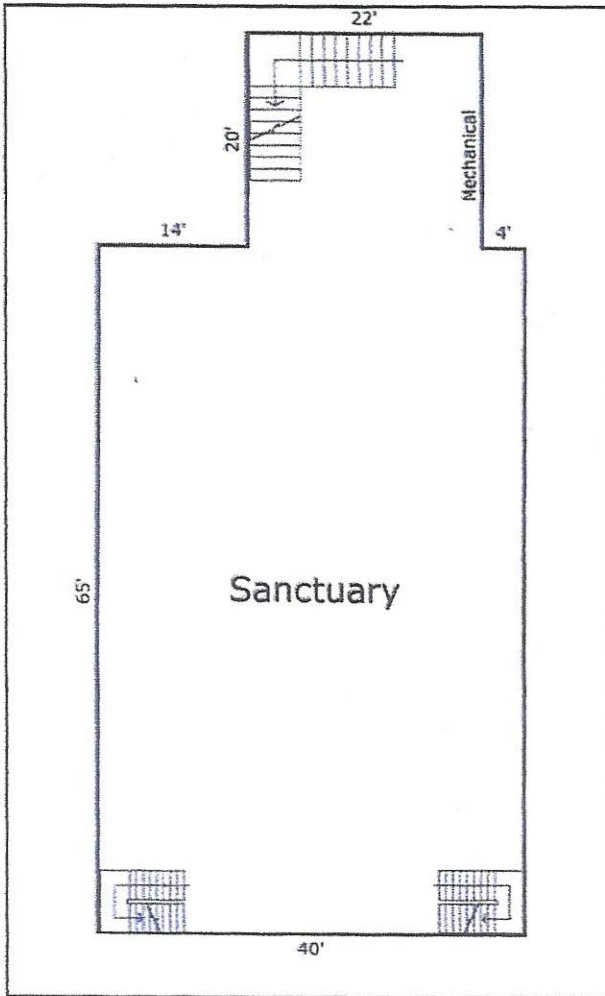
- Macadam Rear Parking Lot for 9 Cars
- 14,893 sf Total Lot Size
- Concrete Sidewalk and Curbing
- TC – Town Center District
- Not in a FEMA Flood Zone



BUILDING SKETCH - MAIN LEVEL -- 3,500 SQ. FT.



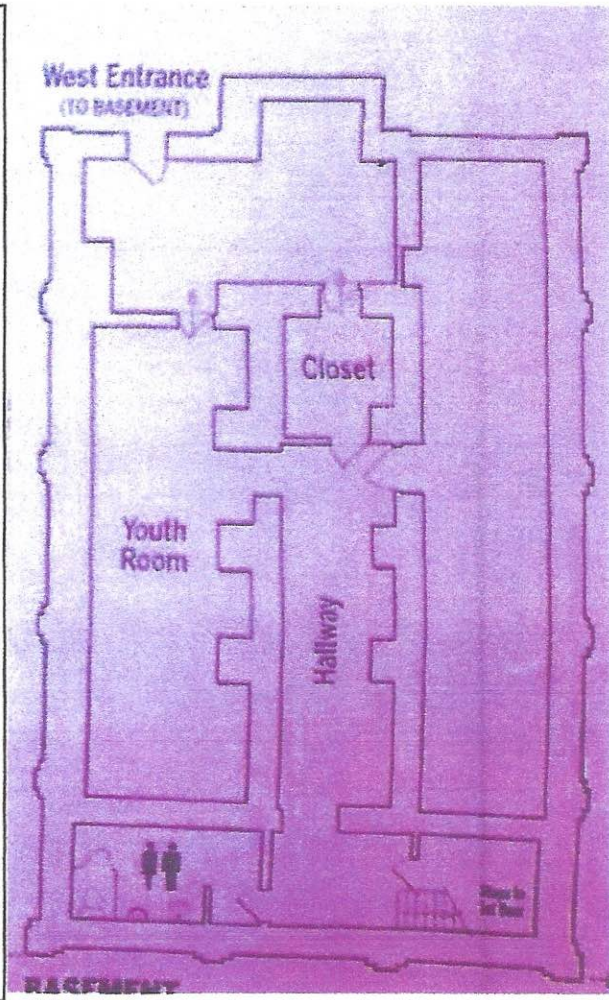
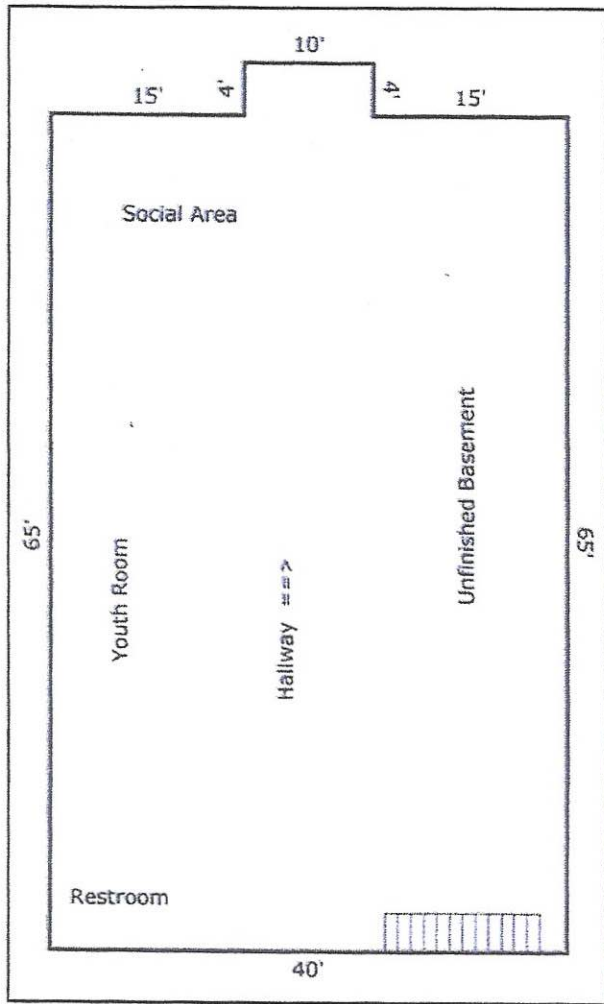
BUILDING SKETCH – UPPER LEVEL -- 3,040 sq. ft.



Above Grade Gross Building Area = 8,428 sq. ft.
 Finished Lower Level Area = 1,320 sq. ft.
 TOTAL Gross Building Area = 9,748 sq. ft.

Sanctuary Level Total (Upper Level): 3,040 sq. ft.
 Main Level Total: 5,388 sq. ft.
 Lower Level Total: 2,640 sq. ft.
 **(50% finished with Walkout Entrance)

BUILDING SKETCH – BASEMENT-- 2,640 sq. ft.



50% Finished Area:

1,320 sq. ft. Finished