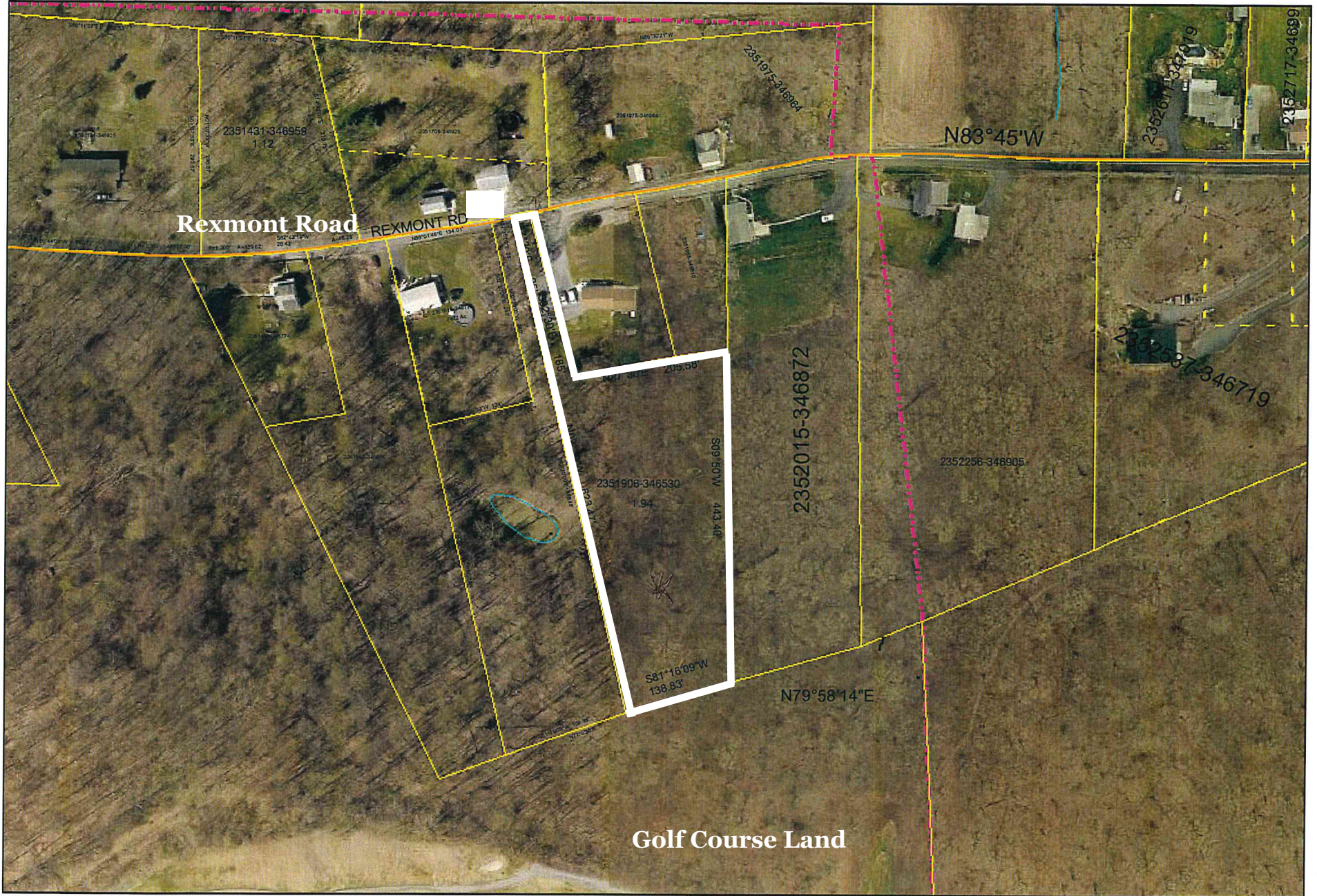


# Lebanon County Tax Assessment Office



-  Tax Parcels
-  Roads
-  Tract
-  Buildings
-  Subdivision Lot
-  Buildings Under Construction
-  Municipal Boundary
-  County Boundary

1 inch = 166.38 feet



Tax Maps Compiled from 1997 Aerial Photography  
 Map Projection - PA State Plane Coordinate System  
 South Zone, NAD83, Coordinates in Feet

Disclaimer:  
 Tax maps show the approximate boundaries of taxable and non-taxable property. The property boundaries depicted should not be interpreted as the legal boundary description. The legal boundary description can be obtained from the property's deed.

