

**ANNEKOM PARKWAY  
STATE ROUTE 337**  
(VAR. WIDTH R/W)

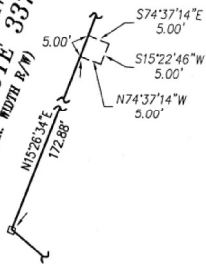


EXHIBIT "A"  
5'X5' PUBLIC UTILITY EASEMENT  
SCALE: NONE

SCOD - SPECIAL CORRIDOR OVERLAY DISTRICT

**ANNEKOM PARKWAY - STATE ROUTE 337**  
(VAR. WIDTH R/W)

NOW OR FORMERLY  
DENNIS N. REID, SR. & ADELL A. REID  
(INST. #20070131000020710)  
304170000 - TAX PARCEL 36A\*176

NOW OR FORMERLY  
JONATHAN ROBERT OWENS  
(INST. #20031114030000267 - WILL)  
302903000 - TAX PARCEL 36A\*173\*174\*175

15' PUBLIC DRAINAGE  
EASEMENT HEREBY  
DEDICATED TO THE  
CITY OF SUFFOLK

10' PUBLIC DRAINAGE  
EASEMENT HEREBY  
DEDICATED TO THE  
CITY OF SUFFOLK

NOW OR FORMERLY  
CITY OF SUFFOLK  
(INST. #20060920000191900)

NOW OR FORMERLY  
CITY OF SUFFOLK  
(INST. #20060920000191900)  
304218800 - TAX PARCEL 36A\*203

NOTE: ZONING OF SUBJECT PARCEL  
AND ADJOINING PARCELS IS B-2.  
INFORMATION OBTAINED FROM CITY  
OF SUFFOLK GIS.

**PARCEL "A"**  
TM 36A\*205

NOW OR FORMERLY  
RACECO OIL CO., LLC  
(INST. #20080215000022460)  
(INST. #20080326000043760)  
(INST. #20080326000043770)  
(INST. #20060630000135800)(PLAT)  
(P.B. 2, PG. 30 - NANSEMOND)

TM 36A\*203  
AC# 304218800

5'X5' PUBLIC UTILITY EASEMENT  
HEREBY DEDICATED TO CITY OF SUFFOLK  
SEE EXHIBIT "A" THIS SHEET

TM 36A\*206A  
AC# 304237200

AREA HEREBY DEDICATED  
TO THE CITY OF SUFFOLK  
FOR RIGHT-OF-WAY  
6,958 SQ.FT. - 0.1597 AC

5' C&P EASEMENT  
(D.B. 255, P. 268)  
(D.B. 277, P. 16)  
(S.H.P.B. 2, P. 9)

SCOD 30' SETBACK

INTERIOR PROPERTY LINES  
HEREBY VACATED (TYP.)

SCOD 30' SETBACK

**PORTSMOUTH BOULEVARD - U.S. ROUTE 58 & 460**  
(VAR. WIDTH R/W)

N 3437335.690  
E 12057494.582

N 3437182.526  
E 12057097.849

**CURVE TABLE**

CURVE	RADIUS	LENGTH	DELTA	TANGENT	CH.BRG.	CH. DIST.
C1	11499.16'	365.76'	1°49'21"	182.90'	S69°00'04"W	365.75'
C2	11499.16'	59.64'	0°17'50"	29.82'	S67°56'29"W	59.64'

**EASEMENT LINE TABLE**

LINE	BEARING	LENGTH
EL1	S75°19'06"E	12.44'
EL2	N41°37'13"E	10.59'
EL3	S22°28'18"E	20.00'
EL4	S41°37'13"W	22.86'
EL5	S21°31'22"E	29.00'
EL6	S68°28'38"W	20.00'
EL7	N21°31'22"W	18.88'

40' 0 40' 80'  
GRAPHIC SCALE  
1"=40'

**EASEMENT CURVE TABLE**

CURVE	RADIUS	LENGTH	DELTA	TANGENT	CH.BRG.	CH. DIST.
EC1	49.50'	22.32'	25°50'07"	11.35'	N54°32'09"E	22.13'
EC2	29.50'	13.30'	25°50'07"	6.77'	S54°32'09"W	13.19'



City of Suffolk  
10/29/2009 08:33:19 PM  
M. D. Center - J. Clerk

RESUBDIVISION OF  
PROPERTY OF

**RACECO OIL CO, LLC**

PARCEL CONTAINING 1.489 ACRES  
AS SHOWN ON PLAT SHOWING PARCEL OF PROPERTY  
STANDING IN THE NAME OF  
VIRGINIA DEPARTMENT OF TRANSPORTATION  
(BEING TAX MAP PARCEL # 36A\*203)  
(INST. #20060630000135800) (INST. #20080215000022460),  
TAX MAP PARCELS 36A\*206, 36A\*206A AND 36A\*207  
(INST. #20080215000022460),  
LOTS 177, 178, AND PORTIONS OF LOTS 177A AND 178A  
(INST. #20080326000043770) AND  
CLOSED PORTION OF "A" AND "B" STREET  
(INST. #20080326000043760) (P.B. 2, PG. 30) NANSEMOND

SUFFOLK, VIRGINIA

SCALE: 1" = 40' - DECEMBER 18, 2009  
REV. MARCH 11, 2010  
REV. JUNE 4, 2010

SHEET 2 OF 2  
08-0347-003

The  
Spectra Group

563 Central Drive Virginia Beach, Virginia 23454  
(757) 497-5862 Fax: (757) 456-0017

SEE SHEET 1 FOR NOTES AND CERTIFICATIONS