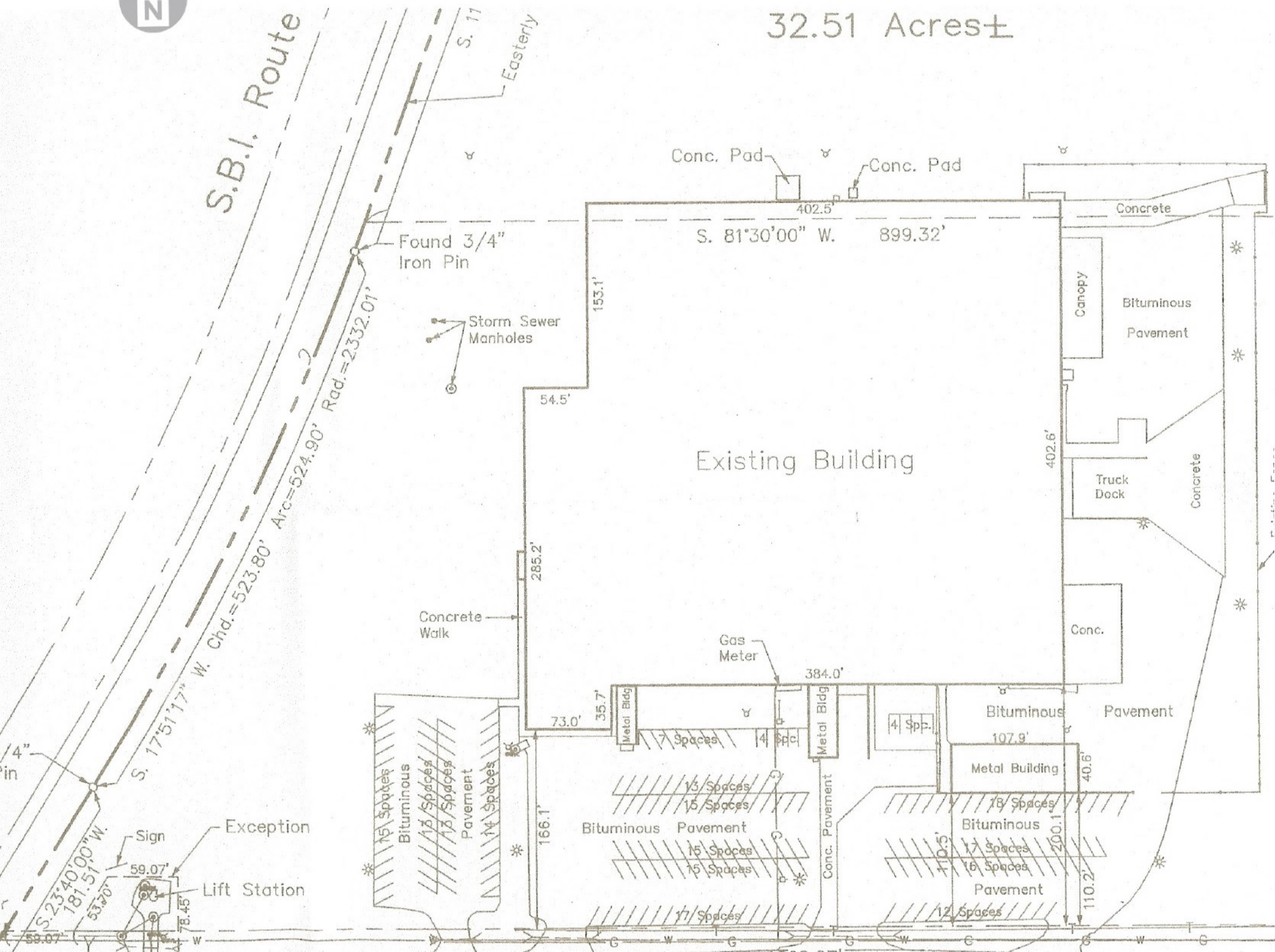




32.51 Acres ±

S.B.I. Route



Found 3/4" Iron Pin

Storm Sewer Manholes

Conc. Pad

S. 81°30'00" W. 899.32'

Existing Building

Concrete Walk

Gas Meter

Exception

Lift Station

Sign

S. 23°40'00" W. 187.51.0" W. 53.20'

Bituminous Pavement

Bituminous Pavement

Metal Building

Bituminous Pavement

Pavement

Concrete

Canopy

Bituminous Pavement

Truck Dock

Concrete

Conc.

Bituminous Pavement

Bituminous Pavement

Conc. Pavement

G W G G W G W G