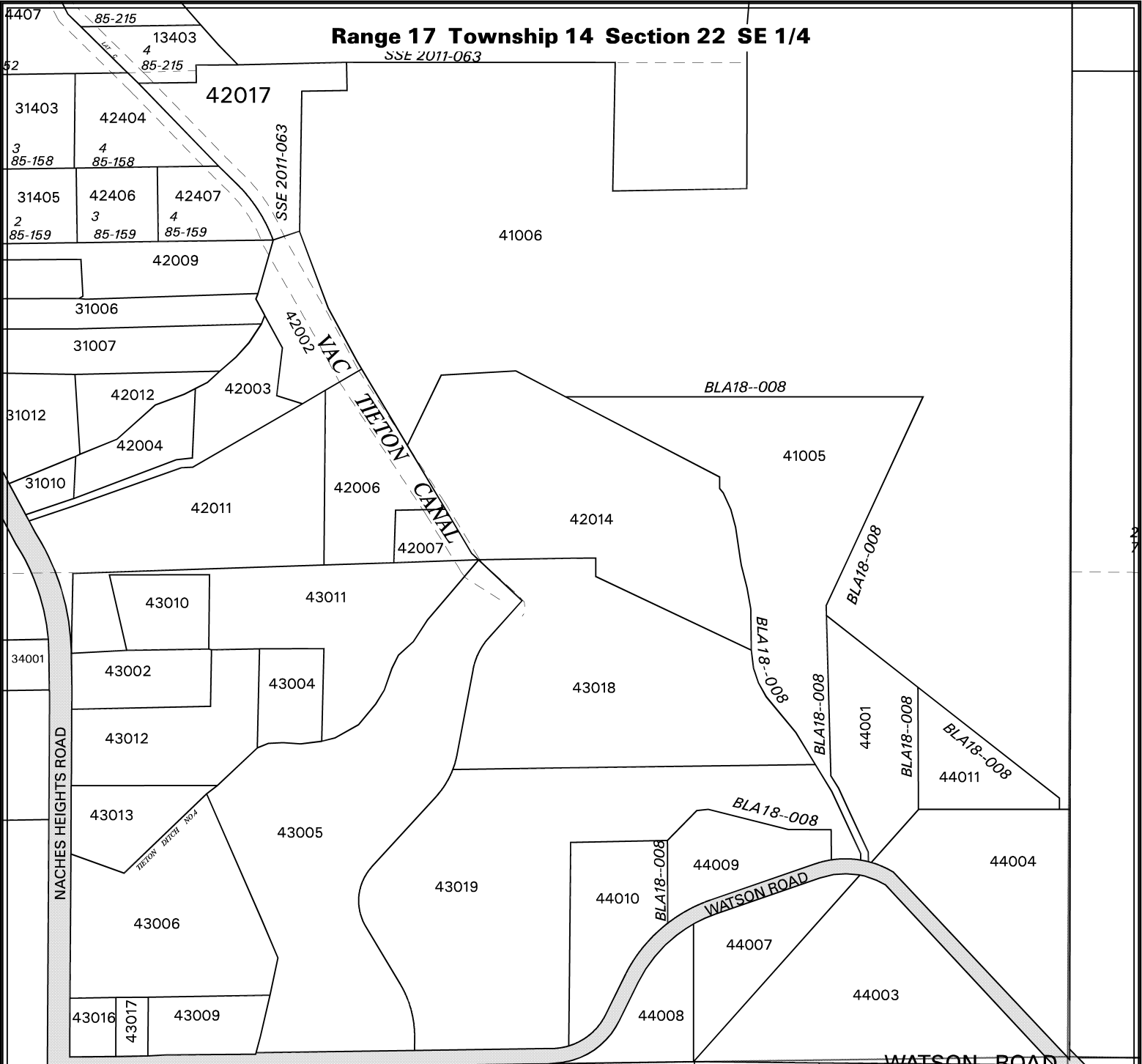
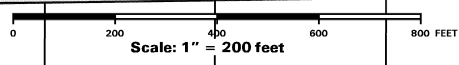


Range 17 Township 14 Section 22 SE 1/4

SSE 2011-063



Copyright (c)  
Yakima County Department of Assessment  
128 N 2nd Street, Courthouse Room 112  
Yakima, WA 98901  
(509) 574-1100  
February 26, 2025



WATSON ROAD  
This map is maintained only as an aid in the appraisal and assessment of real property. The Yakima County Assessors Office does not warrant its accuracy.